

STUDENTS WITH FINANCIAL NEED

May 2005

District staff, district and nondistrict researchers and evaluators, and local agencies often require summary data about students from low-income families. District staff use these data for Title I¹ and other need-based allocations, grant proposals, evaluations of student achievement, and selection of schools for study samples; agencies document community needs with these data. One measure of low family income is the percentage of students certified eligible² for free or reduced-price meals. Data for the district and schools are shown in the attached tables.

Background

Before 1991–92, all eligible students had to apply to be certified as eligible to receive free or reduced-price meals. Consequently, there were undercounts due to the complexity of the application process, lack of knowledge, and the perceived social stigma attached to receiving free or reduced-price meals. Since 1991–92, San Diego City Schools has provided student data electronically to the San Diego County Department of Social Services, which matches these data with county data for recipients of food stamps and CalWORKS. The students who match are directly certified as eligible for free or reduced-price meals. The San Diego City Schools Food Services Department estimated that about 20 percent of 2004–05 students eligible for free or reduced-price meals would be certified directly.³ Other students apply through their school and are certified eligible.

In 2004–05, another step was taken which was expected to decrease the undercount of eligible

¹ Several measures and counts of economically disadvantaged students are reported by or for the district using free or reduced-price meal data: the Consolidated Application (provided to the California Department of Education showing Title I funding allocations to schools), the Title I Ranking Report (used to set Title I funding levels for schools), state STAR testing and Academic Performance Index (API) reports, and the Students With Financial Need report. Each serves a different purpose, is based on a different point in time, and varies in how economically disadvantaged students are identified. This report provides school and district counts and rates for students certified eligible for free or reduced-price meals, taking into consideration federal regulations whereby all students at certain schools are considered eligible for such meals. The Consolidated Application and the Title I Ranking Report do not include charter schools, treat high-poverty schools differently than this report, and include students who may not be certified eligible for free or reduced-price meals but who apparently live in the same households as students who are certified eligible. STAR and API reports only include students tested in STAR. API reports also count students as economically disadvantaged if neither parent has a high school diploma. Therefore, the numbers of economically disadvantaged students in these reports and summaries do not always agree.

² The reported numbers do not show the number of “eligible” students, just the number who are *certified* eligible. With the advent of automated certification in 1991–92, the difference between the two narrowed; the difference has been further narrowed with the introduction of the multi-student household application in 2004–05.

³ San Diego City Schools Administrative Circular, No. 10, CERTIFICATION OF ELIGIBLE NEEDY STUDENTS FOR FREE OR REDUCED-PRICE MEALS, August 24, 2004.

students. The free or reduced-price meal application was changed from an individual student application to a multi-student application on which all students in a household are listed, facilitating the identification and certification of secondary level students who in the past might not have an application submitted because of the perceived social stigma attached to receiving such meals.

In 2004–05, the district had 31 schools with such high percentages of students certified eligible for free and reduced-price meals that, under federal regulations, all students could receive free meals.⁴ All students in these schools are considered eligible to receive free or reduced-price meals in this report. These are called Provision 2 schools. The schools are Baker, Balboa, Brooklyn, Burbank, Carver, Central, Chavez, Chollas/Mead, Edison, Encanto, Euclid, Hamilton, Horton, Jackson, Kennedy, Kimbrough, King, King/Chavez, Linda Vista, Logan, Marshall Elementary, McGill Academy, North Park, Rosa Parks, Sherman, Clark, Mann (new in 2004–05), Memorial, Preuss School UCSD, Wilson, and Hoover.

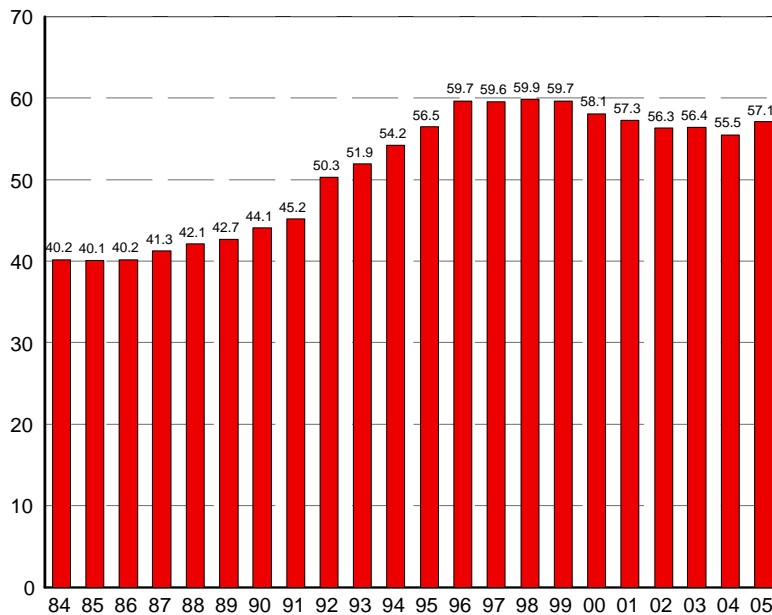


Figure 1. Percentage of students certified eligible to receive free or reduced-price meals, 1984–2005.

Discussion

Of the 131,521 students enrolled in the district in May 2005, 57.1 percent (75,128) were certified eligible for free or reduced-price meals,⁵ 1.6 percentage points higher than for the prior May. Figure

⁴ This option is provided by Section 11(a)(1) of the National School Lunch Act.

⁵ Students are eligible for free meals based on household size and income. For 2004–05, students in a household of two with an annual income of \$23,107 or less are eligible for meals at no cost. For each additional household member, \$5,883 is added to the income requirement. Because the district covers the entire cost of reduced-price

1 shows the percentages of K–12 students certified eligible from 1984 through 2005. Examination of Table 1 shows that large increases occurred for middle level (55.3 to 59.2 percent) and senior high schools (34.0 to 42.3 percent), which is consistent with the predicted impact of the new multi-student application. Elementary, atypical, and alternative schools had relatively small decreases in eligibility rates from May 2004 to May 2005.

It should be noted that the figures in this report do not represent the percentages of students attending San Diego City Schools whose families would be considered in a poverty status in the federal census. However, this is the best available measure of district students from economically disadvantaged families.

Economic advantage and disadvantage are strongly associated with student achievement. Much of the correlation between race/ethnicity and student achievement may actually derive from this variable’s strong association with economic advantage and disadvantage. Figure 2 shows the percentage of students in each racial/ethnic group that were certified eligible for free or reduced-price meals. There are large differences among racial/ethnic groups. Hispanic, Indochinese, and African American students are two to four times as likely to be certified eligible for free or reduced-price meals as Filipino, Asian, and White students. Eight of every ten Hispanic students are certified eligible compared to two in ten White students.

The percentage of students eligible for free or reduced-price meals also varies greatly by grade level. Figure 3 shows that Grade K–7 students have eligibility percentages over 60 percent and that percentages decline steeply thereafter; from Grade 7 to Grade 12, the eligibility percentage declined from 61.6 to 38.0 percent. The decrease may reflect better financial circumstances for the families of older students and, perhaps, a higher likelihood of dropping out of school by Grade 7–12 students from low income families.⁶ Nongraded

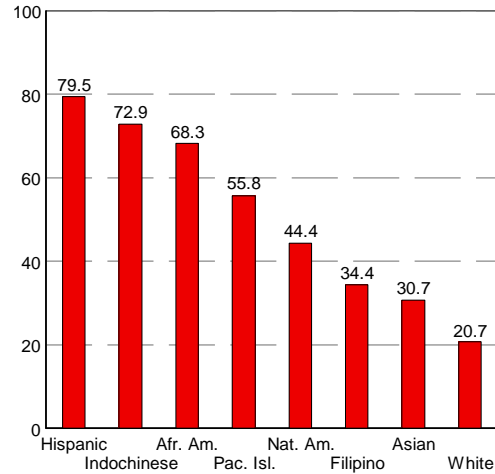


Figure 2. Percentage of students certified eligible to receive free or reduced-price meals, by racial/ethnic group, 2005.

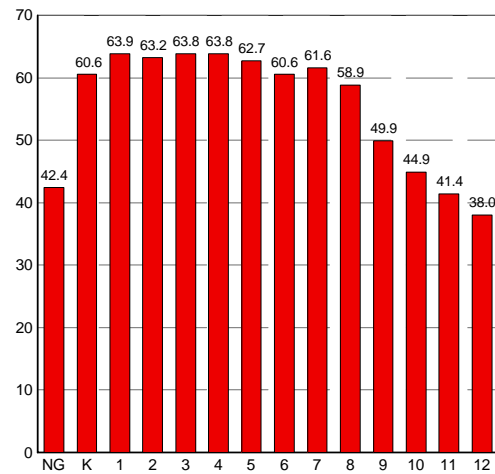


Figure 3. Percentage of students certified eligible to receive free or reduced-price meals, by grade level, 2005.

meals, these criteria also apply to students eligible for reduced-price meals.

⁶ In 2002–03, Grade 7–12 students eligible for free or reduced-price meals had a dropout rate of 4.8 percent, twice the rate for students who were not eligible (2.4 percent). Grade 9–12 rates for eligible students ranged

students had a rate of 42.4 percent.

The multi-student application appears to have increased the number of students certified eligible at secondary level schools. The Grade 7–12 proportion of students eligible in 2005 was 37.7 percent, a substantial increase from 33.4 percent in 2004.

The tables which follow show the number and percentage of students in each school who were certified eligible for free or reduced-price meals in May 2005. Table 1 displays district data by school type for 1983–84 through 2004–05. Tables 2 and 3 show school data by type of school, listing them alphabetically in Table 2 and in rank order of percentage of students certified eligible in Table 3. For comparison purposes, Tables 2 and 3 show each school's ranking in 2004 and 2005.

These data should be used in ways that do not stigmatize students and families.

Report prepared by Gary W. Knowles.

from 5.3 to 12.0 percent, while the corresponding rates for the non-eligible students were between 1.4 and 5.3 percent.

List of Tables**Table**

- 1** District summaries, 1984 through 2005
- 2.a.** Elementary schools, alphabetical
- 2.b.** Middle level schools, alphabetical
- 2.c.** Senior high schools, alphabetical
- 2.d.** Atypical schools, alphabetical
- 2.e.** Alternative schools, alphabetical
- 3.a.** Elementary schools, rank order
- 3.b.** Middle level schools, rank order
- 3.c.** Senior high schools, rank order
- 3.d.** Atypical schools, rank order
- 3.e.** Alternative schools, rank order

Table 1

Students Certified Eligible for Free or Reduced-Price Meals
1984 through 2005
District Summaries

Year	School Type	Enrollment	Students Certified Eligible	
			Number	Percent
2004-05	Elementary	64,598	40,867	63.3
	Middle/Junior High	25,725	15,224	59.2
	Senior High	30,201	12,786	42.3
	Atypical	6,959	4,170	60.0
	Alternative	4,038	2,081	51.5
	TOTAL	131,521	75,128	57.1
2003-04	Elementary	67,567	43,392	64.2
	Middle/Junior High	25,421	14,063	55.3
	Senior High	29,011	9,867	34.0
	Atypical	8,072	5,039	62.4
	Alternative	3,417	1,777	52.0
	TOTAL	133,488	74,138	55.5
2002-03	Elementary	70,291	45,166	64.3
	Middle/Junior High	25,772	14,202	55.1
	Senior High	28,393	10,344	36.4
	Atypical	8,379	5,326	63.6
	Alternative	3,480	1,888	54.3
	TOTAL	136,315	76,926	56.4
2001-02	Elementary	72,830	46,739	64.2
	Middle/Junior High	24,979	13,560	54.3
	Senior High	28,116	10,250	36.5
	Atypical	8,101	4,946	61.1
	Alternative	3,564	1,904	53.4
	TOTAL	137,590	77,399	56.3
2000-01	Elementary	73,908	47,777	64.6
	Middle/Junior High	24,417	13,240	54.2
	Senior High	27,598	10,865	39.4
	Atypical	7,820	4,945	63.2
	Alternative	3,793	2,035	53.7
	TOTAL	137,536	78,862	57.3
1999-00	Elementary	76,688	49,605	64.7
	Middle/Junior High	24,362	13,734	56.4
	Senior High	27,280	11,411	41.8
	Atypical	7,113	4,217	59.3
	Alternative	4,292	2,280	53.1
	TOTAL	139,735	81,247	58.1

Table 1
Students Certified Eligible for Free or Reduced-Price Meals
1984 through 2005
District Summaries

Year	School Type	Enrollment	Students Certified Eligible	
			Number	Percent
1998–99	Elementary	74,079	49,257	66.5
	Middle/Junior High	24,883	14,699	59.1
	Senior High	26,826	11,770	43.9
	Atypical	5,242	2,583	49.3
	Alternative	4,223	2,444	57.9
	TOTAL	135,253	80,753	59.7
1997–98	Elementary	73,042	48,242	66.1
	Middle/Junior High	24,001	14,390	60.0
	Senior High	26,125	11,653	44.6
	Atypical	4,601	2,486	54.0
	Alternative	4,113	2,274	55.3
	TOTAL	131,882	79,045	59.9
1996–97	Elementary	72,743	48,246	66.3
	Middle/Junior High	23,880	14,024	58.7
	Senior High	25,456	10,940	43.0
	Atypical	4,019	2,009	50.0
	Alternative	3,605	2,084	57.8
	TOTAL	129,703	77,303	59.6
1995–96	Elementary	72,806	48,160	66.1
	Middle/Junior High	22,934	13,787	60.1
	Senior High	24,240	10,060	41.5
	Atypical	4,044	2,050	50.7
	Alternative	3,214	1,906	59.3
	TOTAL	127,238	75,963	59.7
1994–95	Elementary	72,728	46,215	63.5
	Middle/Junior High	22,515	12,834	57.0
	Senior High	23,452	8,364	35.7
	Atypical	3,223	1,583	49.1
	Alternative	3,007	1,574	52.3
	TOTAL	124,925	70,570	56.5
1993–94	Elementary	72,001	44,738	62.1
	Middle/Junior High	22,203	12,009	54.1
	Senior High	23,109	7,413	32.1
	Atypical	5,793	2,532	43.7
	TOTAL	123,106	66,692	54.2

Table 1

**Students Certified Eligible for Free or Reduced-Price Meals
1984 through 2005
District Summaries**

Year	School Type	Enrollment	Students Certified Eligible	
			Number	Percent
1992-93	Elementary	72,086	43,188	59.9
	Middle/Junior High	22,170	11,281	50.9
	Senior High	22,543	6,632	29.4
	Atypical	5,034	2,111	41.9
	TOTAL	121,833	63,212	51.9
1991-92	Elementary	70,997	41,165	58.0
	Middle/Junior High	21,843	10,695	49.0
	Senior High	22,930	6,805	29.7
	Atypical	4,846	2,038	42.1
	TOTAL	120,616	60,703	50.3
1990-91	Elementary	70,161	37,841	53.9
	Middle/Junior High	20,719	9,160	44.2
	Senior High	22,783	4,783	21.0
	Atypical	5,086	1,836	36.1
	TOTAL	118,749	53,620	45.2
1989-90	Elementary	68,858	36,434	52.9
	Middle/Junior High	20,547	8,618	41.9
	Senior High	22,196	4,507	20.3
	Atypical	5,104	1,859	36.4
	TOTAL	116,705	51,418	44.1
1988-89	Elementary	66,773	34,778	52.1
	Middle/Junior High	20,256	8,079	39.9
	Senior High	22,604	4,370	19.3
	Atypical	5,166	1,790	34.6
	TOTAL	114,799	49,017	42.7
1987-88	Elementary	63,984	32,761	51.2
	Middle/Junior High	20,242	8,193	40.5
	Senior High	23,588	4,681	19.8
	Atypical	5,035	1,925	38.2
	TOTAL	112,849	47,560	42.1
1986-87	Elementary	63,711	31,902	50.1
	Middle/Junior High	19,371	8,050	41.6
	Senior High	25,236	5,119	20.3
	Atypical	4,526	1,505	33.3
	TOTAL	112,844	46,576	41.3

Table 1

**Students Certified Eligible for Free or Reduced-Price Meals
1984 through 2005
District Summaries**

Year	School Type	Enrollment	Students Certified Eligible	
			Number	Percent
1985–86	Elementary	62,115	30,671	49.4
	Middle/Junior High	19,286	7,683	39.8
	Senior High	25,693	5,093	19.8
	Atypical	4,367	1,373	31.4
	TOTAL	111,461	44,820	40.2
1984–85	Elementary	60,317	30,320	50.3
	Middle/Junior High	20,864	7,748	37.1
	Senior High	24,563	4,661	19.0
	Atypical	4,136	1,282	31.0
	TOTAL	109,880	44,011	40.1
1983–84	Elementary	58,714	29,664	50.5
	Middle/Junior High	20,908	7,617	36.4
	Senior High	23,933	4,683	19.6
	Atypical	3,748	1,172	31.3
	TOTAL	107,303	43,136	40.2

Table 2.a.

**Students Certified Eligible for Free or Reduced-Price Meals, May 2005
Elementary Schools
(Alphabetical Listing)**

School	May 2005 Enrollment	Students Certified Eligible		May '05 Rank Among 122	May '04 Rank Among 123
		Number	Percent		
Adams	733	648	88.4	27	35
Alcott	508	184	36.2	93	83
Angier	322	247	76.7	39	49
Audubon	563	468	83.1	31	40
Baker	493	493	100.0	1	1
Balboa	817	817	100.0	1	1
Barnard	169	104	61.5	63	58
Bay Park	455	147	32.3	98	93
Bayview Terrace	419	305	72.8	46	48
Benchley/Weinberger	517	104	20.1	111	111
Bethune	521	244	46.8	85	80
Bird Rock	491	36	7.3	118	119
Birney	456	370	81.1	34	37
Boone	738	492	66.7	56	62
Brooklyn	464	464	100.0	1	1
Burbank	326	326	100.0	1	1
Cabrillo	240	154	64.2	61	63
Cadman	258	189	73.3	44	60
Carson	610	438	71.8	49	28
Carver	494	494	100.0	1	1
Central	882	882	100.0	1	1
Chavez	665	665	100.0	1	1
Chesterton	560	284	50.7	80	77
Chollas/Mead	863	863	100.0	1	1
Clay	382	293	76.7	40	45
Crown Point	156	114	73.1	45	52
Cubberley	270	130	48.1	83	79
Curie	598	102	17.1	113	114
Dailard	500	114	22.8	110	104
Dana	912	413	45.3	88	86
Darnall	523	371	70.9	51	33
Dewey	235	177	75.3	41	42
Dingeman	810	38	4.7	121	120
Doyle	723	188	26.0	105	101
Edison	612	612	100.0	1	1
Einstein Academy	183	72	39.3	91	118
Emerson/Bandini	943	619	65.6	57	25
Encanto	833	833	100.0	1	1
Ericson	840	297	35.4	94	94
Euclid	816	816	100.0	1	1
Explorer Charter	269	3	1.1	122	123
Field	343	243	70.8	52	47

Table 2.a.

**Students Certified Eligible for Free or Reduced-Price Meals, May 2005
Elementary Schools
(Alphabetical Listing)**

School	May 2005 Enrollment	Students Certified Eligible		May '05 Rank Among 122	May '04 Rank Among 123
		Number	Percent		
Fletcher	254	130	51.2	76	68
Florence	260	188	72.3	47	54
Foster	526	234	44.5	89	89
Franklin	490	443	90.4	26	31
Freese	671	533	79.4	35	41
Fulton	432	364	84.3	28	46
Gage	572	182	31.8	100	98
Garfield	486	381	78.4	37	30
Grant	424	140	33.0	97	92
Green	392	123	31.4	101	96
Hage	763	238	31.2	102	103
Hamilton	980	980	100.0	1	1
Hancock	672	523	77.8	38	55
Hardy	368	198	53.8	73	72
Hawthorne	352	160	45.5	87	84
Hearst	385	46	11.9	117	116
Hickman	705	245	34.8	95	97
Holmes	460	106	23.0	109	108
Horton	760	760	100.0	1	1
Jackson	820	820	100.0	1	1
Jefferson	348	285	81.9	32	34
Jerabek	857	41	4.8	119	121
Johnson	394	292	74.1	43	43
Jones	335	202	60.3	67	71
Juarez	341	208	61.0	65	64
KIPP Adelante	168	65	38.7	92	112
Kennedy	718	718	100.0	1	1
Kimbrough	887	887	100.0	1	1
King	634	634	100.0	1	1
Knox	542	386	71.2	50	27
Kumeyaay	492	73	14.8	115	115
La Jolla	491	80	16.3	114	113
Lafayette	445	241	54.2	71	74
Lee	621	379	61.0	64	73
Linda Vista	651	651	100.0	1	1
Lindbergh/Schweitzer	706	378	53.5	74	69
Logan	867	867	100.0	1	1
Loma Portal	350	138	39.4	90	91
Marshall	696	696	100.0	1	1
Marvin	378	114	30.2	103	99
Mason	936	433	46.3	86	82
McGill Academy	147	147	100.0	1	1

Table 2.a.

**Students Certified Eligible for Free or Reduced-Price Meals, May 2005
Elementary Schools
(Alphabetical Listing)**

School	May 2005 Enrollment	Students Certified Eligible		May '05 Rank Among 122	May '04 Rank Among 123
		Number	Percent		
McKinley	444	330	74.3	42	44
Miller	890	578	64.9	59	61
Miramar Ranch	822	102	12.4	116	117
Museum	75	18	24.0	107	102
North Park	218	218	100.0	1	1
Nubia	375	225	60.0	68	67
Nye	613	392	63.9	62	70
Oak Park	757	599	79.1	36	50
Ocean Beach	282	144	51.1	79	66
Pacific Beach	296	160	54.1	72	78
Paradise Hills	454	327	72.0	48	53
Penn	786	447	56.9	69	75
Perkins	404	376	93.1	25	26
Perry	443	290	65.5	58	56
Promise	204	132	64.7	60	36
Rolando Park	278	194	69.8	54	51
Rosa Parks	1,434	1,434	100.0	1	1
Ross	422	297	70.4	53	59
Rowan	319	267	83.7	30	38
Sandburg	696	222	31.9	99	100
Scripps	508	24	4.7	120	122
Sequoia	361	185	51.2	75	85
Sessions	382	96	25.1	106	107
Sherman	563	563	100.0	1	1
Silver Gate	417	114	27.3	104	106
Spreckels	706	361	51.1	77	76
Sunset View	433	87	20.1	112	109
Tierrasanta	530	179	33.8	96	95
Toler	280	170	60.7	66	57
Torrey Pines	393	94	23.9	108	105
Valencia Park	593	484	81.6	33	39
Vista Grande	556	266	47.8	84	90
Walker	640	327	51.1	78	81
Washington	283	196	69.3	55	29
Webster	493	414	84.0	29	32
Wegeforth	281	142	50.5	81	88
Whitman	338	190	56.2	70	65
Zamorano	1,341	661	49.3	82	87

Table 2.b.

**Students Certified Eligible for Free or Reduced-Price Meals, May 2005
Middle Level Schools
(Alphabetical Listing)**

School	May 2005 Enrollment	Students Certified Eligible		May '05 Rank Among 25	May '04 Rank Among 24
		Number	Percent		
Bell	1,626	808	49.7	16	13
CPMA ¹	566	304	53.7	14	12
Challenger	1,151	412	35.8	20	21
Clark	1,588	1,588	100.0	1	1
Correia	952	488	51.3	15	15
De Portola	990	341	34.4	21	19
Farb	837	591	70.6	9	7
Gompers	885	768	86.8	4	—
High Tech	389	37	9.5	24	23
Keiller	524	397	75.8	8	14
Kroc	769	445	57.9	13	9
Lewis	1,117	420	37.6	19	17
Mann	1,211	1,211	100.0	1	3
Marston	1,181	693	58.7	12	11
Memorial	1,460	1,460	100.0	1	1
Montgomery	709	563	79.4	5	4
Muirlands	1,061	247	23.3	23	22
O'Farrell	1,324	1,031	77.9	6	6
Pacific Beach	851	578	67.9	10	8
Pershing	999	468	46.8	17	16
Roosevelt	1,059	819	77.3	7	5
Standley	1,314	421	32.0	22	18
Taft	763	517	67.8	11	10
Thurgood Marshall	1,047	71	6.8	25	24
Wangenheim	1,352	546	40.4	18	20

¹ Creative, Performing, and Media Arts

Table 2.c.

Students Certified Eligible for Free or Reduced-Price Meals, May 2005
Senior High Schools
(Alphabetical Listing)

School	May 2005 Enrollment	Students Certified Eligible		May '05 Rank Among 31	May '04 Rank Among 17
		Number	Percent		
Clairemont	1,371	488	35.6	22	9
Cortez Hill	181	46	25.4	25	7
Crawford CHAMPS ¹	398	277	69.6	4	—
Crawford IDEA ²	369	274	74.3	2	—
Crawford Law & Business	397	282	71.0	3	—
Crawford Multimedia	379	248	65.4	7	—
Gompers	555	357	64.3	8	8
Henry	2,302	574	24.9	26	12
High Tech	459	61	13.3	31	16
High Tech International	182	42	23.1	28	—
Hoover	2,005	2,005	100.0	1	1
Kearny Construction	273	148	54.2	16	—
Kearny Digital Media	404	211	52.2	18	—
Kearny Intl Business	415	239	57.6	11	—
Kearny Sci Connect Tech	412	265	64.3	9	—
La Jolla	1,602	244	15.2	29	15
Madison	1,383	773	55.9	13	5
Mira Mesa	2,422	634	26.2	24	13
Mission Bay	1,567	875	55.8	14	4
Morse	2,671	1,151	43.1	19	10
Point Loma	1,866	599	32.1	23	11
SD Business	396	215	54.3	15	—
SD CIMA ³	440	303	68.9	5	—
SD International Studies	479	189	39.5	20	—
SD LEADS ⁴	437	296	67.7	6	—
SD Media Vis Prf Arts	419	223	53.2	17	—
SD Met Career Technical	64	40	62.5	10	—
SD Science Technology	437	248	56.8	12	—
Scripps Ranch	2,240	336	15.0	30	17
Serra	1,863	723	38.8	21	8
University City	1,813	420	23.2	27	14

- ¹ Community Health and Medical Practices School
- ² Invention and Design Academy
- ³ Cultural Investigations in a Multicultural Atmosphere
- ⁴ Lead, Explore, Achieve, Discover, and Serve

Table 2.d.

**Students Certified Eligible for Free or Reduced-Price Meals, May 2005
Atypical Schools
(Alphabetical Listing)**

School	May 2005 Enrollment	Students Certified Eligible		May '05 Rank Among 13	May '04 Rank Among 12
		Number	Percent		
Holly Drive	131	117	89.31	4	5
King/Chavez	299	299	100.0	1	1
Language Academy	803	389	48.4	7	9
Learning Choice	360	5	1.4	12	—
Longfellow	635	233	36.7	9	11
Mt. Everest	297	31	10.4	11	12
Muir	294	218	74.2	6	6
Preuss School UCSD	753	753	100.0	1	1
SCPA ¹	1,459	593	40.6	8	10
San Diego Cooperative ²	315	66	21.0	10	—
So Cal Connections	82	1	1.2	13	—
Tubman Village Charter	262	196	74.8	5	7
Wilson	1,269	1,269	100.0	1	1

¹ School of Creative and Performing Arts

² San Diego Cooperative was listed among elementary schools for the May 2004 report.

Table 2.e.

**Students Certified Eligible for Free or Reduced-Price Meals, October 2004
Alternative Schools
(Alphabetical Listing)**

School	Oct. 2004 Enrollment	Students Certified Eligible		Oct. '04 Rank Among 14	May '04 Rank Among 8
		Number	Percent		
ALBA ¹	121	66	54.5	5	2
Audeo	189	73	38.6	8	8
Charter School of SD	1,476	759	51.4	6	7
Connections	195	89	45.6	7	3
Del Sol	75	27	36.0	9	—
Garfield	465	261	56.1	3	4
Home and Hospital Instr	49	4	8.2	11	—
Integrated Life Skills	11	0	0.0	13	—
LCI Instruction ²	163	19	11.7	10	—
New Dawn	52	29	55.8	4	—
Riley	84	67	79.8	1	1
TRACE ³	278	19	6.8	12	—
Twain	350	244	69.7	2	5
Whittier Learning Center	1	0	0.0	13	—

¹ Alternative Learning for Behavior and Attitude

² Licensed Children's Institution

³ Transitional Resources for Adult Community Education

Table 3.a.

Students Eligible for Free or Reduced-Price Meals, May 2005
Elementary Schools
(Rank Order Listing)

School	May 2005 Enrollment	Students Certified Eligible		May '05 Rank Among 122	May '04 Rank Among 123
		Number	Percent		
Baker	493	493	100.0	1	1
Balboa	817	817	100.0	1	1
Brooklyn	464	464	100.0	1	1
Burbank	326	326	100.0	1	1
Carver	494	494	100.0	1	1
Central	882	882	100.0	1	1
Chavez	665	665	100.0	1	1
Chollas/Mead	863	863	100.0	1	1
Edison	612	612	100.0	1	1
Encanto	833	833	100.0	1	1
Euclid	816	816	100.0	1	1
Hamilton	980	980	100.0	1	1
Horton	760	760	100.0	1	1
Jackson	820	820	100.0	1	1
Kennedy	718	718	100.0	1	1
Kimbrough	887	887	100.0	1	1
King	634	634	100.0	1	1
Linda Vista	651	651	100.0	1	1
Logan	867	867	100.0	1	1
Marshall	696	696	100.0	1	1
McGill Academy	147	147	100.0	1	1
North Park	218	218	100.0	1	1
Rosa Parks	1,434	1,434	100.0	1	1
Sherman	563	563	100.0	1	1
Perkins	404	376	93.1	25	26
Franklin	490	443	90.4	26	31
Adams	733	648	88.4	27	35
Fulton	432	364	84.3	28	46
Webster	493	414	84.0	29	32
Rowan	319	267	83.7	30	38
Audubon	563	468	83.1	31	40
Jefferson	348	285	81.9	32	34
Valencia Park	593	484	81.6	33	39
Birney	456	370	81.1	34	37
Freese	671	533	79.4	35	41
Oak Park	757	599	79.1	36	50
Garfield	486	381	78.4	37	30
Hancock	672	523	77.8	38	55
Angier	322	247	76.7	39	49
Clay	382	293	76.7	40	45
Dewey	235	177	75.3	41	42
McKinley	444	330	74.3	42	44

Table 3.a.

**Students Eligible for Free or Reduced-Price Meals, May 2005
Elementary Schools
(Rank Order Listing)**

School	May 2005 Enrollment	Students Certified Eligible		May '05 Rank Among 122	May '04 Rank Among 123
		Number	Percent		
Johnson	394	292	74.1	43	43
Cadman	258	189	73.3	44	60
Crown Point	156	114	73.1	45	52
Bayview Terrace	419	305	72.8	46	48
Florence	260	188	72.3	47	54
Paradise Hills	454	327	72.0	48	53
Carson	610	438	71.8	49	28
Knox	542	386	71.2	50	27
Darnall	523	371	70.9	51	33
Field	343	243	70.8	52	47
Ross	422	297	70.4	53	59
Rolando Park	278	194	69.8	54	51
Washington	283	196	69.3	55	29
Boone	738	492	66.7	56	62
Emerson/Bandini	943	619	65.6	57	25
Perry	443	290	65.5	58	56
Miller	890	578	64.9	59	61
Promise	204	132	64.7	60	36
Cabrillo	240	154	64.2	61	63
Nye	613	392	63.9	62	70
Barnard	169	104	61.5	63	58
Lee	621	379	61.0	64	73
Juarez	341	208	61.0	65	64
Toler	280	170	60.7	66	57
Jones	335	202	60.3	67	71
Nubia	375	225	60.0	68	67
Penn	786	447	56.9	69	75
Whitman	338	190	56.2	70	65
Lafayette	445	241	54.2	71	74
Pacific Beach	296	160	54.1	72	78
Hardy	368	198	53.8	73	72
Lindbergh/Schweitzer	706	378	53.5	74	69
Sequoia	361	185	51.2	75	85
Fletcher	254	130	51.2	76	68
Spreckels	706	361	51.1	77	76
Walker	640	327	51.1	78	81
Ocean Beach	282	144	51.1	79	66
Chesterton	560	284	50.7	80	77
Wegeforth	281	142	50.5	81	88
Zamorano	1,341	661	49.3	82	87
Cubberley	270	130	48.1	83	79
Vista Grande	556	266	47.8	84	90

Table 3.a.

Students Eligible for Free or Reduced-Price Meals, May 2005
Elementary Schools
(Rank Order Listing)

School	May 2005 Enrollment	Students Certified Eligible		May '05 Rank Among 122	May '04 Rank Among 123
		Number	Percent		
Bethune	521	244	46.8	85	80
Mason	936	433	46.3	86	82
Hawthorne	352	160	45.5	87	84
Dana	912	413	45.3	88	86
Foster	526	234	44.5	89	89
Loma Portal	350	138	39.4	90	91
Einstein Academy	183	72	39.3	91	118
KIPP Adelante	168	65	38.7	92	112
Alcott	508	184	36.2	93	83
Ericson	840	297	35.4	94	94
Hickman	705	245	34.8	95	97
Tierrasanta	530	179	33.8	96	95
Grant	424	140	33.0	97	92
Bay Park	455	147	32.3	98	93
Sandburg	696	222	31.9	99	100
Gage	572	182	31.8	100	98
Green	392	123	31.4	101	96
Hage	763	238	31.2	102	103
Marvin	378	114	30.2	103	99
Silver Gate	417	114	27.3	104	106
Doyle	723	188	26.0	105	101
Sessions	382	96	25.1	106	107
Museum	75	18	24.0	107	102
Torrey Pines	393	94	23.9	108	105
Holmes	460	106	23.0	109	108
Dailard	500	114	22.8	110	104
Benchley/Weinberger	517	104	20.1	111	111
Sunset View	433	87	20.1	112	109
Curie	598	102	17.1	113	114
La Jolla	491	80	16.3	114	113
Kumeyaay	492	73	14.8	115	115
Miramar Ranch	822	102	12.4	116	117
Hearst	385	46	11.9	117	116
Bird Rock	491	36	7.3	118	119
Jerabek	857	41	4.8	119	121
Scripps	508	24	4.7	120	122
Dingeman	810	38	4.7	121	120
Explorer Charter	269	3	1.1	122	123

Table 3.b.

**Students Eligible for Free or Reduced-Price Meals, May 2005
Middle Level Schools
(Rank Order Listing)**

School	May 2005 Enrollment	Students Certified Eligible		May '05 Rank Among 25	May '04 Rank Among 24
		Number	Percent		
Clark	1,588	1,588	100.0	1	1
Mann	1,211	1,211	100.0	1	3
Memorial	1,460	1,460	100.0	1	1
Gompers	885	768	86.8	4	—
Montgomery	709	563	79.4	5	4
O'Farrell	1,324	1,031	77.9	6	6
Roosevelt	1,059	819	77.3	7	5
Keiller	524	397	75.8	8	14
Farb	837	591	70.6	9	7
Pacific Beach	851	578	67.9	10	8
Taft	763	517	67.8	11	10
Marston	1,181	693	58.7	12	11
Kroc	769	445	57.9	13	9
CPMA ¹	566	304	53.7	14	12
Correia	952	488	51.3	15	15
Bell	1,626	808	49.7	16	13
Pershing	999	468	46.8	17	16
Wangenheim	1,352	546	40.4	18	20
Lewis	1,117	420	37.6	19	17
Challenger	1,151	412	35.8	20	21
De Portola	990	341	34.4	21	19
Standley	1,314	421	32.0	22	18
Muirlands	1,061	247	23.3	23	22
High Tech	389	37	9.5	24	23
Thurgood Marshall	1,047	71	6.8	25	24

¹ Creative, Performing, and Media Arts

Table 3.c.

**Students Certified Eligible for Free or Reduced-price Meals, May 2005
Senior High Schools
(Rank Order Listing)**

School	May 2005 Enrollment	Students Certified Eligible		May '05 Rank Among 31	May '04 Rank Among 17
		Number	Percent		
Hoover	2,005	2,005	100.0	1	1
Crawford IDEA ¹	369	274	74.3	2	—
Crawford Law	397	282	71.0	3	—
Crawford CHAMPS ²	398	277	69.6	4	—
SD CIMA ³	440	303	68.9	5	—
SD LEADS ⁴	437	296	67.7	6	—
Crawford Multimedia	379	248	65.4	7	—
Gompers	555	357	64.3	8	8
Kearny Sci Connect Tech	412	265	64.3	9	—
SD Met Career Technical	64	40	62.5	10	—
Kearny Intl Business	415	239	57.6	11	—
SD Science Technology	437	248	56.8	12	—
Madison	1,383	773	55.9	13	5
Mission Bay	1,567	875	55.8	14	4
SD Business	396	215	54.3	15	—
Kearny Construction	273	148	54.2	16	—
SD Media Vis Prf Arts	419	223	53.2	17	—
Kearny Digital Media	404	211	52.2	18	—
Morse	2,671	1,151	43.1	19	10
SD International Studies	479	189	39.5	20	—
Serra	1,863	723	38.8	21	8
Clairemont	1,371	488	35.6	22	9
Point Loma	1,866	599	32.1	23	11
Mira Mesa	2,422	634	26.2	24	13
Cortez Hill	181	46	25.4	25	7
Henry	2,302	574	24.9	26	12
University City	1,813	420	23.2	27	14
High Tech International	182	42	23.1	28	—
La Jolla	1,602	244	15.2	29	15
Scripps Ranch	2,240	336	15.0	30	17
High Tech	459	61	13.3	31	16

- ¹ Invention and Design Academy
- ² Community Health and Medical Practices School
- ³ Cultural Investigations in a Multicultural Atmosphere
- ⁴ Lead, Explore, Achieve, Discover, and Serve

Table 3.d.

**Students Certified Eligible for Free or Reduced-Price Meals, May 2005
Atypical Schools
(Rank Order Listing)**

School	May 2005 Enrollment	Students Certified Eligible		May '05 Rank Among 13	May '04 Rank Among 12
		Number	Percent		
King/Chavez	299	299	100.0	1	1
Preuss School UCSD	753	753	100.0	1	1
Wilson	1,269	1,269	100.0	1	1
Holly Drive	131	117	89.3	4	5
Tubman Village Charter	262	196	74.8	5	7
Muir	294	218	74.2	6	6
Language Academy	803	389	48.4	7	9
SCPA ¹	1,459	593	40.6	8	10
Longfellow	635	233	36.7	9	11
San Diego Cooperative ²	315	66	21.0	10	—
Mt. Everest	297	31	10.4	11	12
Learning Choice	360	5	1.4	12	—
So Cal Connections Acad	82	1	1.2	13	—

¹ School of Creative and Performing Arts

² San Diego Cooperative was listed among elementary schools for the May 2004 report.

Table 3.e.

**Students Certified Eligible for Free or Reduced-Price Meals, May 2005
Alternative Schools
(Rank Order Listing)**

School	May 2005 Enrollment	Students Certified Eligible		May '05 Rank Among 14	May '04 Rank Among 8
		Number	Percent		
Riley	104	85	81.7	1	1
ALBA ¹	209	148	70.8	2	2
Twain	461	325	70.5	3	5
Garfield	493	329	66.7	4	4
Connections	176	109	61.9	5	3
New Dawn Day	56	33	58.9	6	0
Charter School of SD	1,555	811	52.2	7	7
Audeo Charter	290	122	42.1	8	8
Del Sol	75	28	37.3	9	0
TRACE ²	294	52	17.7	10	0
Home and Hospital Instr	97	12	12.4	11	0
LCI Instruction ³	214	26	12.2	12	0
Integrated Life Skills	12	1	8.3	13	0
Whittier Learning Center	2	0	0.0	14	0

¹ Alternative Learning for Behavior and Attitude

² Transitional Resources for Adult Community Education

³ Licensed Children's Institution