
Report on Dropouts and Graduates, 2004–05

Introduction

This report presents district and school dropout and graduation data for the 2004–05 school year. Dropout analyses address grade level, race/ethnicity, gender, economic disadvantage, English language proficiency, and special education status.

Background

San Diego City Schools reports dropout data to the California Department of Education (CDE) through the annual California Basic Educational Data System (CBEDS) report. The CDE defines a dropout as any student in Grades 7–12 who:

- left school before graduation or attainment of the legal equivalent (passed the General Educational Development [GED] examination or the California High School Proficiency Examination [CHSPE])¹ and
- did not return to a school or an educational program by October of the following school year.

Although this general definition still applies, the CDE changed the working definition of dropout beginning with 2002–03, aligning California’s definition with that of the National Center for Education Statistics (NCES). There are five important differences between the current and former working definition which impact the district dropout rate:

- **The dropout period** changed from April to April to the regular school year (September to June for traditional schedule schools and September to July for year-round schools). This change increases the dropout rate. There is less time for receipt of transcript requests from nondistrict schools for students who left the district late in the prior school year by dropout determination day in early October of the following school year.
- **Students who leave the United States** are not dropouts. Formerly, such students were dropouts unless there was documented intention to enroll in school in another country. This change reduces the dropout rate.

¹ The district does not count as dropouts Grade 12 students who receive a Certificate or a Letter of Recognition. See Administrative Procedure 4770 for definitions of these documents.

- **Students enrolled in the High School Diploma Program (HSDP)** during the dropout period who are not still enrolled in the HSDP on dropout determination day of the next school year (October 5, 2005 for the 2004–05 school year) are dropouts. Prior to 2002–03, HSDP students who earned at least one credit during the dropout period were not counted as dropouts. This change increases the dropout rate.
- **Students waived to enroll in a community college** during the dropout period who have not attained a high school diploma or GED and are not still enrolled at the community college on dropout determination day of the next school year are dropouts. Prior to 2002–03, students the district waived to enroll in community college were not counted as dropouts. This change increases the dropout rate.
- **Severely disabled students** can be counted as dropouts. Before 2002–03, the district did not report severely disabled students as dropouts. (These dropouts are reported in the grade appropriate for their age.) This change increases the dropout rate.

These changes resulted in a higher “new-rules” dropout rate than the rate from the old rules. The new-rules Grade 7–12 dropout rate for 2002–03 was 3.5 percent (2,040 dropouts), about 25 percent higher than the “old-rules” rate of 2.8 percent (1,607 dropouts). The primary impact of the changes was on Grade 9–12 dropout rates.

The benefit of these changes is that district, California, and NCES reports of national dropout rates are now comparable.

Secondary schools routinely document the school status of students who leave during the dropout period and documentation data were collected from schools in October–December 2005 using a web-based Dropout Data Collection system. Dropouts were identified from the documentation data and summary school-level dropout counts were reported to the CDE in the 2005 CBEDS report.

In collecting 2004–05 dropout data, the Research and Reporting Department took two steps that were not taken in prior years. The first was to conduct a telephone survey regarding all potential dropouts remaining after schools had provided their documentation information to the Research and Reporting Department. The second was to have the California Department of Education match the district’s potential dropouts against student enrollment data in the CDE’s new California School Information Services (CSIS) system.

After schools had provided their documentation and matching with San Diego Community College enrollment for the fall of 2005–06 was completed, there were 1,835 potential dropouts. This count was reduced by 212 students through the telephone survey and by another 173 students through matching with CSIS enrollment records, reducing the number of 2004–05 dropouts to 1,450. Both the telephone survey and the CSIS matching were more successful in removing Grade 7–9 dropouts than dropouts from higher grades. Seventy-two percent of the 212 students removed by the survey were in Grade 7–9 and 28 percent were in Grade 10–12. Of 173 students removed by matching CDE’s student enrollment files, 95 percent were in Grade 7–9 and only 5 percent in higher grades. The dropout reduction generally reduced dropout figures across all demographic groups.

Types of Dropout Rates

Two types of dropout rates are used in this report to provide different perspectives on the student dropout problem:

- The **single-year rate** measures the proportion of students that drop out in a single year. The rates for several years can be compared to determine the dropout trend. This rate is computed by dividing the number of dropouts for a group by that group's enrollment and multiplying by 100.
- The **estimated four-year rate** measures the dropout rate for a high school graduation class based on the individual Grade 9–12 rates for the current year. This rate estimates the proportion of students in Grade 9 that is expected to drop out over the course of four years of high school, presuming the underlying grade level dropout rates remain unchanged from the current year. The rate is derived by successively multiplying the “survival” rates $((100 - \text{dropout rate})/100)$ for each grade to achieve a four-year survival rate, multiplying that figure by 100 and subtracting the result from 100.

Due to the rule changes, district dropout data for years prior to 2002–03 are not comparable to those for 2002–03 and later years. Therefore, the focus of this report is mainly on 2002–03 and after. However, to provide the reader some sense of district dropout rates over a longer period, some analyses will include earlier years.

District Grade 7–12 Single-Year Dropout Rates

In 2004–05, 1,450 Grade 7–12 students dropped out, many fewer than in the prior year (2,018). Figure 1 shows district Grade 7–12 dropout rates for the past decade. The old- and new-rules rates for 2002–03 overlap to illustrate the effect of the rule changes on the dropout rate. The new-rules rate was about 25 percent greater than the old-rules rate, the difference between 3.5 and 2.8 percent, respectively. In 2004–05, the district Grade 7–12 dropout rate was 2.5 percent, a steep drop from the 3.4 percent for the prior year; this sharp decline reflects better data collection by senior high level schools and the implementation of new data collection techniques by the Research and Reporting Department (see Appendix A for the district 2004–05 dropout data sheet).

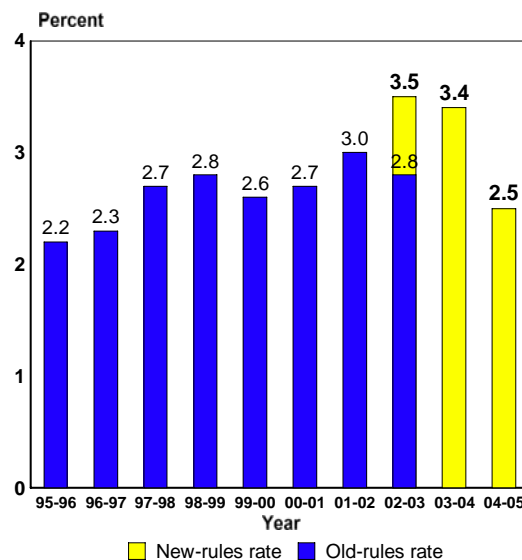


Figure 1. Grade 7–12 single-year dropout rate, 1995–96 through 2004–05.

Middle Level and High School Dropout Rates

The middle level Grade 7–8 dropout rates for the past ten years are shown in Figure 2. The 2002–03 old-rules rate overlaps the new-rules rate, revealing that the new-rules rate was lower than the old-rules rate by 0.1 percentage point. The Grade 7–8 dropout rate was 1.7 percent for 2004–05, about 20 percent lower than the prior year. Much of this reduction was accomplished through the telephone followup survey and CSIS matching. The followup survey brought the dropout count to about the level of the prior year (in other words the followup made up for the documentation the middle level schools did not collect) and the California School Information Services (CSIS) system matching accounted for the reduction. If not for the extra data collection steps, the Grade 7–8 dropout figures for 2004–05 would be much higher than 2003–04 figures. It appears this relatively high Grade 7–8 dropout rate may be due to inadequate data collection by some middle level schools² (see Table 1 for individual middle school data).

The Grade 9–12 dropout rate was 2.9 percent in 2004–05, much lower than rates in the two prior years (see Figure 3). Most of the 2004–05 reduction was due to the triple impact of better data collection by senior high schools at Grades 10–12, the collection of data for potential dropouts through the telephone followup survey, and the matching of potential San Diego City Schools dropouts with CSIS enrollment records. The largest impact on the Grade 9–12 dropout rate was made by senior high schools reducing the dropout count 18.4 percent from 2003–04 to 2004–05. Another 6.8

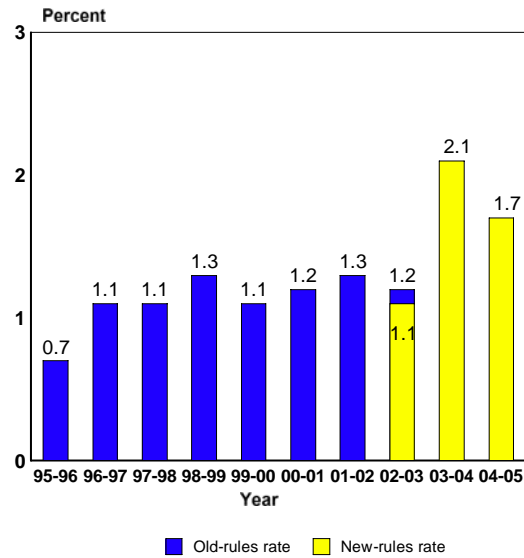


Figure 2. Grade 7–8 single-year rate, 1995–96 through 2004–05.

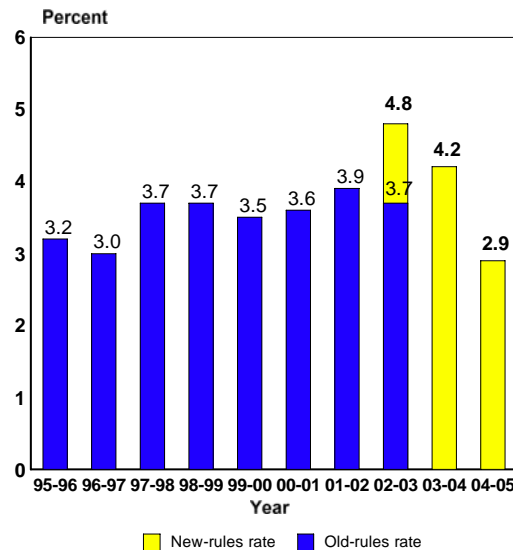


Figure 3. Grade 9–12 single-year rate, 1995–96 through 2004–05.

² Grade 6 students who are promoted at the end of a school year (e.g., 2003–04) but do not enroll in Grade 7 in the district the following year (e.g., 2004–05) are included in the Grade 7 student dropout data collection. Middle level schools reported 100 no show students as Grade 7 dropouts in 2004–05. The balance of Grade 7 students (108) actually enrolled during 2004–05 before leaving school and later being counted as dropouts. The high number of Grade 7 no show dropouts may suggest that some middle schools did not collect or did not receive documentation information from the schools at which these students completed Grade 6 at the end of 2003–04.

percent reduction came through the telephone followup and a further 5.7 percent through the match to CSIS enrollment records.

Estimated Four-Year Dropout Rate

Another way to look at high school dropouts is the estimated four-year dropout rate. Figure 4 shows the estimated four-year rates (a surrogate for the high school dropout rate) for the last decade. The current rate of 11.3 percent is the lowest of the decade. Based on last year’s dropout figures, about 113 of every 1,000 district ninth graders would drop out before graduation. Applying this estimate to current enrollments would result in about 1,244 current ninth graders dropping out before completing high school.

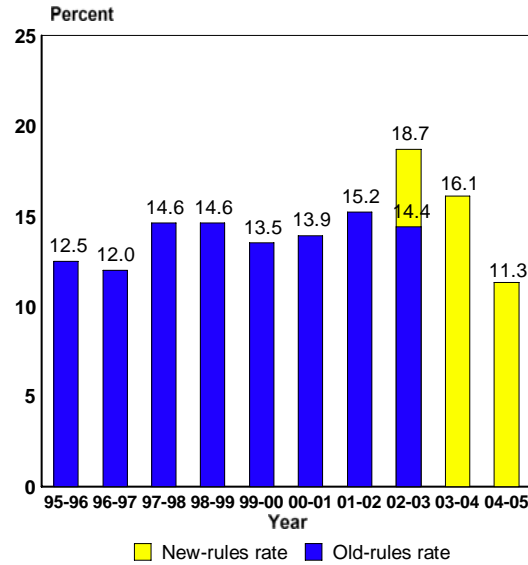


Figure 4. Grade 9–12 estimated four-year dropout rate, 1995–96 through 2004–05.

Student Analyses

Grade Level

In 2003–04 and 2004–05, the Grade 7 dropout rate was far higher than the 0.7 percent rate in 2002–03 (see Figure 5). In contrast, the Grade 8 rate has been relatively stable at about 1.6 percent over the last three years. The Grade 9 dropout rate rose considerably in 2003–04 but declined to a three-year low of 3.0 percent in 2004–05. Grade 10–12 rates decreased substantially in each of the past two years; in a shift from earlier years, Grade 10 and 11 rates were lower than the Grade 9 dropout rate in 2004–05.

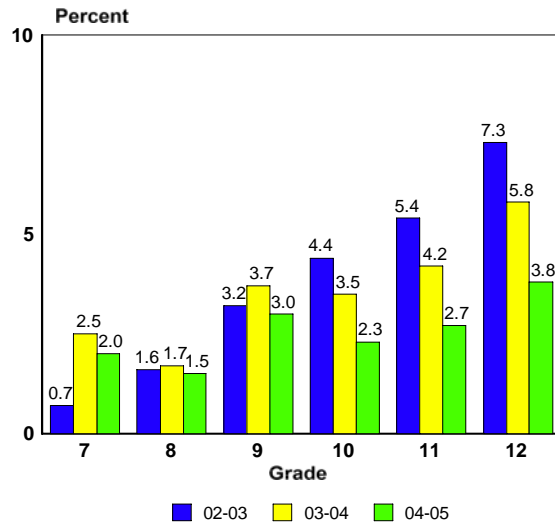


Figure 5. Grade 7–12 single-year dropout rates by grade level, 2002–03 through 2004–05.

Race/Ethnicity

In 2004–05, Grade 7–12 dropout rates for students of all racial/ethnic groups decreased from the prior year. Hispanic students have had two consecutive years of dropout rate decline; their rate dropped from 4.9 percent in 2002–03 to 3.3 percent last year, a decrease of about one-third (see Figure 6). African American, Filipino, and White students had sizable rate reductions last year and the Indochinese student rate increased moderately but remained much lower than in 2002–03. The

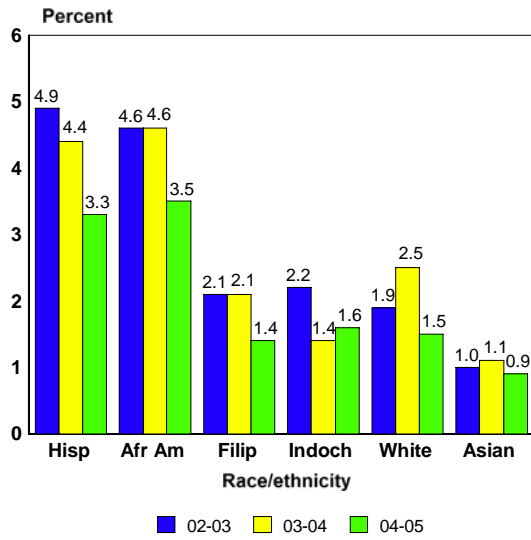


Figure 6. Grade 7–12 single-year dropout rates by race/ethnicity, 2002–03 through 2004–05.

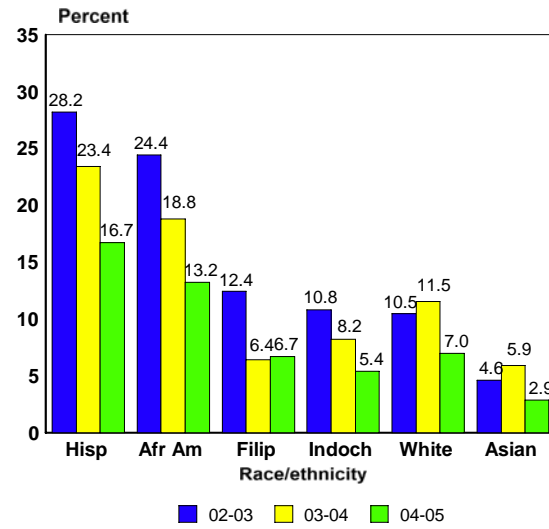


Figure 7. Grade 9–12 estimated four-year dropout rates by race/ethnicity, 2002–03 through 2004–05.

Asian rate has been stable at about 1.0 percent for the last three years.

The estimated Grade 9–12 four-year rates for Hispanic, African American, Filipino, and Indochinese students were much lower in 2004–05 than in 2002–03 (see Figure 7). White and Asian students’ estimated rates decreased markedly after increases in 2003–04.

Gender

In 2004–05, the Grade 7–12 dropout rate for male students was 2.7 percent and 2.3 percent for female students. Over the last three years male and female dropout rates have decreased, with almost

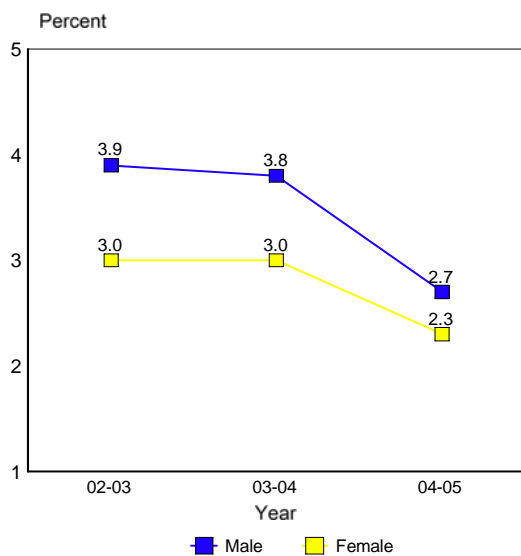


Figure 8. Grade 7–12 single-year dropout rates by gender, 2002–03 through 2004–05.

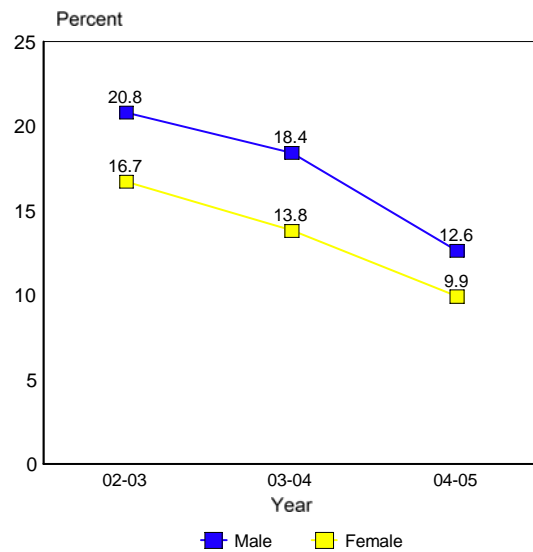


Figure 9. Grade 9–12 estimated four-year dropout rates by gender, 2002–03 through 2004–05.

all of the reduction occurring from 2003–04 to 2004–05 (see Figure 8). The male and female rates decreased sharply, 30 percent and 23 percent, respectively. Estimated four-year Grade 9–12 dropout rates for male and female students for the last three years (see Figure 9) declined appreciably from 2002–03 to 12.6 percent for males and 9.9 percent for females in 2004–05.

Economically Disadvantaged

For this analysis, students certified eligible for free or reduced-price meals are identified as economically disadvantaged.³

In 2004–05, the Grade 7–12 dropout rate for economically disadvantaged (ED) students was 3.4 percent, much lower than the rates in the two prior years, 4.8 percent and 4.9 percent, respectively (see Figure 10). The rate for non-ED dropouts was 2.4 percent in 2002–03, decreased to 2.3 percent in 2003–04, and increased to 2.7 percent last year. The 2004–05 dropout reduction resulted in a greatly reduced ED dropout rate that was much closer to the non-ED dropout rate than in prior years.

Grade level differences between ED and non-ED dropout rates are shown in Figure 11. Grade 7 is the only grade at which the non-ED dropout rate was higher than the ED dropout rate. The gaps between ED and non-ED dropout rates progressed from about 15 percent at Grade 8 to almost 90 percent at Grade 12. Grade 9–12 dropout rates ranged from 4.1 to 6.6 percent for ED students and from 2.3 to 3.5 percent for non-ED Grade 9–12 students. It appears ED students become much more likely to drop out than non-ED students as they progress through high school.

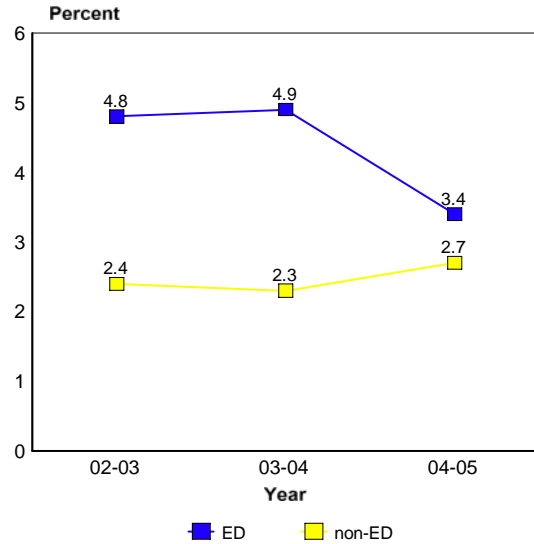


Figure 10. ED and non-ED student dropout rates, 2002–03 through 2004–05.

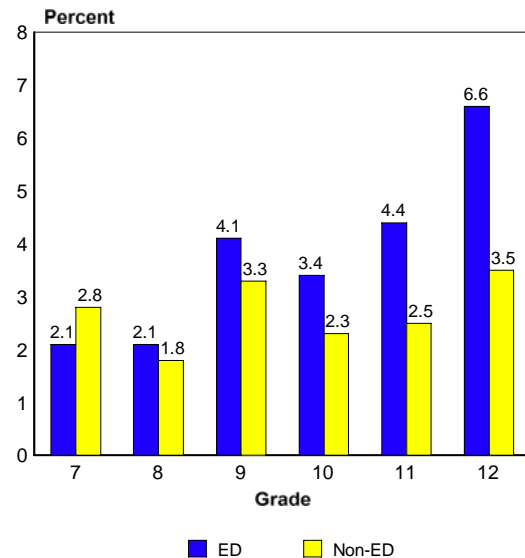


Figure 11. 2004–05 dropout rates for ED and non-ED students, by grade level.

³ The district annually produces a statistical report on economically disadvantaged students entitled *Students with Financial Need*, which provides counts and rates for the district and each school.

English Language Proficiency

The 2004–05 English Learner (EL)⁴ student dropout rate was 3.1 percent. Figure 12 shows that the EL dropout rate was about 30 percent higher than that for English-Only students (2.4 percent), was more than twice the rate for Fluent students (1.5 percent), and about six times that for students reclassified⁵ as English proficient (0.5 percent). EL students who clear the hurdle of reclassification and repeatedly test proficient on the CST are much less likely to drop out than other students.

Figure 12 also shows that the risk of dropping out is not necessarily diminished with increased English language proficiency. Although EL students were more likely to drop out than English-Only, Fluent, and Reclassified students, the English-Only had a higher dropout rate than the presumably less English-proficient Fluent students, who in turn had a higher rate than presumably less proficient Reclassified students.

Grade 7–12 dropout rates for students with home languages other than English vary by home (primary) language. Hispanic students of all English language proficiency levels had higher dropout rates than students with other primary languages. Figure 13 shows that the 3.5 percent dropout rate for Spanish-speaking EL students was much higher than the combined 1.9 percent dropout rate for other EL dropouts. The differences are even greater between dropout rates for Spanish-speaking Fluent and Reclassified students and other Fluent and Reclassified students. Also, the English-Only Hispanic⁶ student dropout rate was greater than the dropout rate not only for other English-Only

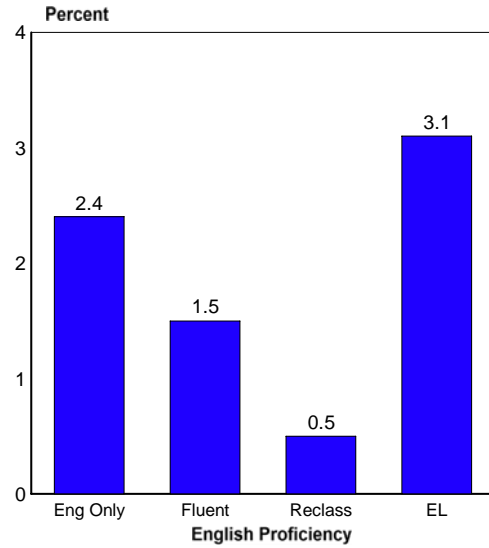


Figure 12. Grade 7–12 dropout rates by English language proficiency, 2004–05

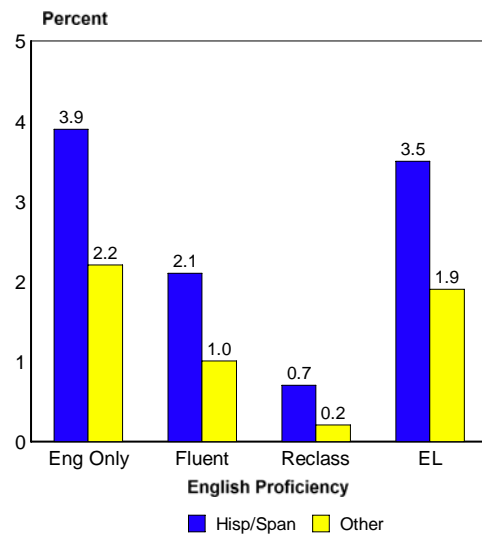


Figure 13. Grade 7–12 dropout rates for Hispanic/Spanish-speaking and other students with home languages other than English by English proficiency, 2004–05

⁴ Reclassified students who had not scored English Language Proficient on the California Standards Test (CST) at least three times are included as English learners. This conforms with the CDE collection of NCLB English Learner dropout and graduate data in the California Basic Educational Data System (CBEDS) report.

⁵ Only Reclassified students who had scored English Language Proficient on the California Standards Test (CST) at least three times are included in this category.

⁶ Students with a racial/ethnic designation of Hispanic that do not have a home language other than English.

students but those for all other proficiency levels. Hispanic English-Only students are were more at risk of dropping out in 2004–05 than Hispanic EL students.

Special Education Student Dropouts

An analysis of dropping out by special education students is not presented because of data quality issues with both the special education data from the old Student Information System (SIS) for the years before 2004–05 and that in ENCORE, the system implemented in 2004–05.

School Analyses

Individual school dropout figures are grouped into middle level, senior high, and alternative schools. Schools with an atypical grade configuration have their Grade 7 and 8 data reported with middle level school data and their Grade 9–12 data among senior high school figures. In addition, this section compares 2004–05 Crawford, Kearny, and San Diego high school complex data to 2003–04 data for the antecedent high schools. Individual school dropout data sheets are in Appendix B.

In 2004–05, dropout rates for senior high and alternative schools decreased from the prior year by 30 and 37 percent, respectively, and the middle level school rate decreased by about 15 percent. The dropout rate for Grade 7–8 middle level schools declined from 2.0 percent (413 dropouts) in 2003–04 to 1.7 percent (350 dropouts) in 2004–05 (see Table 1). Thirteen of these schools had rate increases from the year before. While most increases were small, Gompers' relatively high 2003–04 dropout rate of 5.1 percent (41 dropouts) more than doubled in 2004–05 to 11.6 percent (70 dropouts). Nineteen schools had lower dropout rates in 2004–05 than the prior year. Most of these were small decreases. However, Creative, Performing, and Media Arts (CPMA), O'Farrell, and Wilson had meaningful decreases resulting from the reduction of their dropout counts by 20 or more from the year before. Eight middle level schools had no dropouts in 2004–05.

The Grade 9–12 senior high school dropout rate decreased sharply from 2.9 percent in 2003–04 to 2.0 percent in 2004–05; there were 275 fewer dropouts than the year before (see Table 2). Seventeen schools had dropout rate decreases, four had rate increases, and three had rates unchanged from the year before. Crawford Complex, Hoover, Mission Bay, Morse, San Diego Complex, and Serra reduced their number of dropouts by 20 to 70 dropouts in 2004–05 from 2003–04. The increases were minor, less than one percentage point. The 1.0 percent dropout rate for the Kearny Complex was unchanged from the year before. High Tech High, Mt. Everest, and Preuss recorded no dropouts in 2004–05. Individual complex school rates are shown in Table 3.

Table 1
Grade 7–8 Middle Level School Dropout Data, 2003–04 and 2004–05

School	2003–04		2004–05		Count Change	Rate Change
	Count	Rate	Count	Rate		
Bell	44	3.5	45	4.0	1	0.5
CPMA ¹	23	11.6	1	0.2	-22	-11.4
Challenger	1	0.1	0	0.0	-1	-0.1
Clark	25	2.3	23	2.1	-2	-0.2
Correia	10	1.0	5	0.5	-5	-0.5
De Portola	4	0.6	2	0.3	-2	-0.3
Farb	13	2.0	9	1.5	-4	-0.5
Gompers	41	5.1	70	11.6	29	6.5
High Tech	1	0.5	0	0.0	-1	-0.5
Holly Drive	4	12.1	1	2.6	-3	-9.5
Keiller	28	5.7	30	7.3	2	1.6
King/Chavez	0	0.0	3	2.8	3	2.8
Kroc	5	0.5	11	1.4	6	0.9
Lang Academy	0	0.0	2	1.9	2	1.9
Learning Choice ²	—	—	2	3.0	2	—
Lewis	0	0.0	3	0.4	3	0.4
Longfellow	8	12.5	1	1.9	-7	-10.6
Mann	21	2.3	15	1.8	-6	-0.5
Marshall	6	0.7	7	0.9	1	0.2
Marston	4	0.4	1	0.1	-3	-0.3
Memorial	35	3.3	31	3.1	-4	-0.2
Montgomery	9	1.7	6	1.3	-3	-0.4
Mt. Everest	0	0.0	0	0.0	0	0.0
Muir	0	0.0	1	1.3	1	1.3
Muirlands	0	0.0	0	0.0	0	0.0
O'Farrell	37	3.6	13	1.3	-24	-2.3
Pacific Beach	1	0.2	3	0.5	2	0.3
Pershing	4	0.6	3	0.5	-1	-0.1
Preuss	0	0.0	0	0.0	0	0.0
Roosevelt	23	2.8	21	3.0	-2	0.2
San Diego Coop ³	—	—	1	2.5	1	—
SCPA ⁴	2	0.4	0	0.0	-2	-0.4
So Calif Connect ²	—	—	0	0.0	0	—
Standley	7	0.8	5	0.6	-2	-0.2
Taft	5	0.9	4	0.8	-1	-0.1
Tubman	1	1.4	0	0.0	-1	0.0
Wangenheim	5	0.5	5	0.5	0	0.0
Wilson	46	5.8	26	3.7	-20	-2.1
Total	413	2.0	350	1.7	-63	-0.3

¹ Creative, Performing, and Media Arts

² School opened in 2004–05

³ School grade configuration was K–6 in 2003–04; no students eligible for dropout accounting.

⁴ School of Creative and Performing Arts

Table 2

Grade 9–12 Senior High School Dropout Data, 2003–04 and 2004–05

School	2003–04		2004–05		Count Change	Rate Change
	Count	Rate	Count	Rate		
Bell	25	13.3	25	10.7	0	-2.6
Clairemont	26	1.8	25	1.7	-1	-0.1
Cortez Hill	2	1.9	1	0.6	-1	-1.3
Crawford Complex ¹	117	6.9	47	2.7	-70	-4.2
Gompers	93	9.3	91	10.1	-2	0.8
Henry	23	1.0	12	0.5	-11	-0.5
High Tech	1	0.2	0	0.0	-1	-0.2
High Tech Intl ²	—	—	3	1.6	3	—
Hoover	130	6.0	101	4.7	-29	-1.3
Kearny Complex ¹	16	1.0	16	1.0	0	0.0
La Jolla	8	0.5	7	0.4	-1	-0.1
Learning Choice ²	—	—	4	6.0	4	—
Madison	13	0.9	22	1.5	9	0.6
Memorial	26	13.3	19	10.7	-7	-2.6
Mira Mesa	24	0.9	12	0.5	-12	-0.4
Mission Bay	62	3.6	41	2.5	-21	-1.1
Morse	111	3.7	77	2.7	-34	-1.0
Mt. Everest	0	0.0	0	0.0	0	0.0
Muir	3	3.3	1	1.1	-2	-2.2
Point Loma	48	2.5	32	1.6	-16	-0.9
Preuss	0	0.0	0	0.0	0	0.0
San Diego Complex ¹	150	5.4	96	3.4	-54	-2.0
San Diego Metro ²	—	—	1	1.4	1	—
SCPA ³	4	0.5	6	0.7	2	0.2
Scripps Ranch	35	1.5	37	1.6	2	0.1
Serra	42	2.1	17	0.9	-25	-1.2
University City	18	0.9	9	0.5	-9	-0.4
Total	977	2.9	702	2.0	-275	-0.9

¹ 2004–05 complex school figures are aggregated for comparison to 2003–04 dropout figures for antecedent high schools

² School opened in 2004–05

³ School Creative and Performing Arts

Table 3

Complex School Grade 9–12 Dropout Data, 2004–05

School	2004–05	
	Count	Rate
CRAWFORD COMPLEX	47	2.7
CHAMP ¹	8	1.8
IDEA ²	15	3.8
Law & Business	7	1.6
Multimedia Visual Arts	17	4.4
KEARNY COMPLEX	16	1.0
Construction Tech	1	0.4
Digital Media Design	6	1.4
International Business	9	2.1
Science Connections Technology	0	0.0
SAN DIEGO COMPLEX	96	3.4
Business	25	5.6
CIMA ³	15	3.2
International Studies	7	1.5
LEADS ⁴	12	2.5
Media Visual and Performing Arts	17	3.6
Science and Technology	20	4.1

Alternative school dropout rates fell sharply from 20.7 percent in 2003–04 to 13.0 percent in 2004–05 (see Table 4). The closure of Youth Opportunity Unlimited (YOU) contributed substantially to this reduction. Riley had no dropouts in either 2003–04 or 2004–05, and all alternative schools other than Alternative Learning for Behaviors and Attitude (ALBA) reduced their dropout rates from 2003–04. ALBA's rate rose from 18.9 percent to 26.4 percent when its dropout count doubled (14 to 28) from 2003–04 to 2004–05.

Table 4

Alternative School Dropout Data, 2003–04 and 2004–05

School	2003–04		2004–05		Count Change	Rate Change
	Count	Rate	Count	Rate		
ALBA ¹	14	18.9	28	26.4	14	7.5
Audeo	11	10.1	16	8.8	5	-1.3
CSSD ²	172	12.6	147	10.0	-25	-2.6
Connections	132	88.0	111	56.9	-21	-31.1
Del Sol	6	14.0	5	10.6	-1	-3.4
Garfield	46	11.2	33	7.1	-13	-4.1
Home and Hospital	16	57.1	6	31.6	-10	-25.5
LCI Instruction ³	7	6.4	3	2.1	-4	-4.3
New Dawn	7	18.4	1	1.9	-6	-16.5
Riley	0	0.0	0	0.0	0	0.0
Twain	71	22.0	48	13.7	-23	-8.3
YOU ⁴	127	49.2	—	—	-127	—
Total	609	20.7	398	13.0	-211	-7.7

¹ Alternative Learning for Behavior and Attitude

² Charter School of San Diego

³ Licensed Children's Institution

⁴ Youth Opportunity Unlimited was closed at the end of 2003–04

2004–05 Graduation Rates

In 2001–02, the CDE introduced a graduation rate as a requirement of No Child Left Behind. The rate is derived by aggregating the number of graduates for a school year and the number of dropouts for a graduation class over the previous four years. The following formula presents the graduation rate calculation for 2004–05:

$$\frac{100 \times \text{Number of Graduates (2004–05)}}{\text{Number of Graduates (2004–05) + Grade 9 Dropouts (2001–02) + Grade 10 Dropouts (2002–03) + Grade 11 Dropouts (2003–04) + Grade 12 Dropouts (2004–05)}}$$

Table 5 shows that San Diego's graduation rate of 81.7 percent was sixth highest among California's ten largest school districts. The overall California rate was 84.9 percent.⁷

⁷ California Department of Education DataQuest report at <http://data1.cde.ca.gov/dataquest>.

Figure 14 illustrates the trend of the district graduation rate over the last five years. The rate declined from 84.7 percent in 2000–01 to 79.5 percent in 2003–04, followed by an increase to 81.7 percent for 2004–05. The two-year decline from 2001–02 to 2003–04 was primarily due to the impact of the new dropout data collection rules introduced in 2002–03, which had the effect of increasing the dropout counts that figure into the graduation rate and thereby driving graduation rates lower.

The increase in the graduation rate in 2004–05 is due to a reduction in the number of Grade 12 dropouts and an increase in the number of graduates compared with 2003–04. The calculation of the 2004–05 graduation rate involved the 2004–05 Grade 12 dropout count, which was much lower than that for the prior year (421 vs. 278). Additionally, there were 294 more graduates in 2004–05 than the year before (6,653 vs. 6,359), 94 of which were Joint Diploma Program graduates included for the first time in the graduation rate calculation.

Based on the graduation rate, the four-year dropout rate for the Class of 2004–05 was 18.3 percent (100 minus the graduation rate [81.7]). This dropout rate does not account for all attrition in this graduation class. The attrition rate for this class was 39.1 percent.⁸ Certificates and Letters of Recognition were awarded to 1.5 percent of the 2004–05 graduation class, and 2.0 percent re-enrolled in the fall of 2005–06 and remain enrolled. In addition, about 4.1 percent moved out of the country, 8.0 percent entered alternative education programs (adult education, GED, and the Joint Diploma programs), and about 0.4 percent passed the California High School Proficiency Examination (CHSPE). About 2.3 percent left for other known reasons

Table 5

2005 Graduation Rates for California’s Ten Largest School Districts

District	Graduation Rate
San Francisco	94.0
Long Beach	84.7
Sacramento City	84.3
Elk Grove	83.8
Santa Ana	83.7
San Diego	81.7
San Juan	80.8
San Bernardino	75.8
Fresno	75.2
Los Angeles	66.1
California	84.9

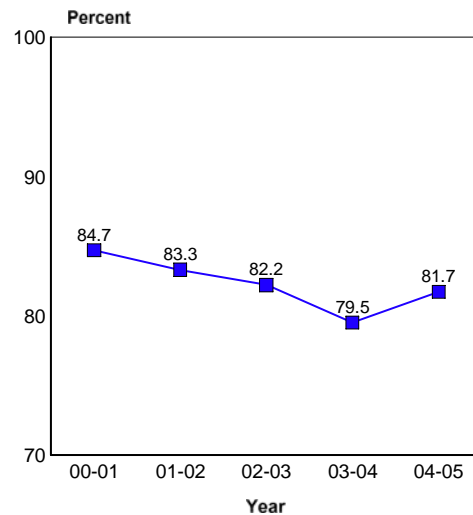


Figure 14. District graduation rate, 2000–01 through 2004–05.

⁸ Attrition is the reduction in a graduation class between Grade 9 and graduation. The Class of 2004–05 had 10,916 Grade 9 students in 2001–02 and 6,653 graduates four years later, a difference of 4,263 students. This difference is divided by the Grade 9 enrollment and multiplied by 100 to produce the attrition rate.

such as deceased, incarcerated, and special education students exiting when the maximum age of 22 was reached.⁹

In 2004–05, female students had a considerably higher graduation rate than male students. The female graduation rate of 84.4 percent was 5.6 percentage points higher than the male graduation rate of 78.8 percent.

Graduation rates vary widely for the various racial/ethnic groups. The 2004–05 graduation rates by racial/ethnic group are displayed in Figure 15. Rates range from 94.3 percent for Asian students to 70.0 percent for Hispanic students. Indochinese, Filipino, and White students had similar graduation rates of about 91 percent, while

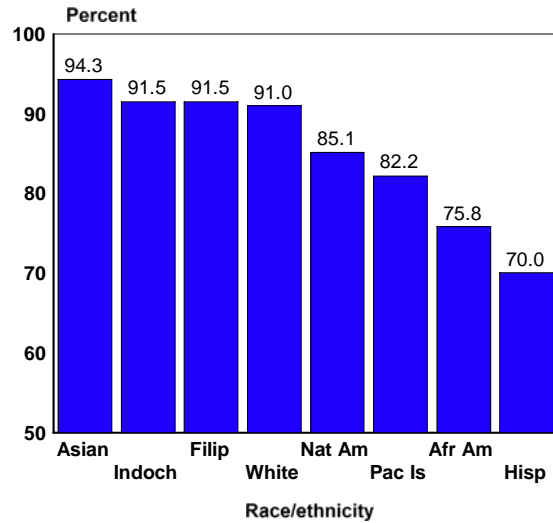


Figure 15. Graduation rates by race/ethnicity, 2004–05.

Table 6

Ethnic-Gender Group Graduation Rates, 2004–05

Ethnic-Gender Group	Dropouts		Graduation Rate
	Grade 9–12	Graduates	
Indochinese Female	9	254	96.6
Asian Female	5	126	96.2
Filipino Female	28	371	93.0
White Female	96	1,167	92.4
Asian Male	9	106	92.2
Pacific Islander Female	3	33	91.7
Filipino Male	40	358	90.0
White Male	130	1,119	89.6
Native American Male	3	19	86.4
Indochinese Male	35	221	86.3
Native American Female	4	21	84.0
African American Female	134	478	78.1
Hispanic Female	369	1,067	74.3
African American Male	145	394	73.1
Pacific Islander Male	10	27	73.0
Hispanic Male	471	892	65.4

⁹ These estimates were from documentation recorded in dropout data collection for 2001–02 through 2004–05.

Native American and Pacific Islander student rates were over 80 percent. The African American student graduation rate was 75.8 percent.

When gender rates for racial/ethnic groups are examined there is an even wider range of graduation rates than are seen in the racial/ethnic group analysis. Table 6 shows that Indochinese female students had a graduation rate (96.6 percent) almost 50 percent higher than that of Hispanic male students (65.4 percent). It was noted above that the difference between the male and female dropout rates was 5.6 percentage points but certain racial/ethnic groups had male-female rate differences that were far greater. The gap between Hispanic male and female graduation rates was 8.9 percentage points (65.4 and 74.3 percent, respectively); the difference between Indochinese male and female rates was 10.3 percentage points (86.3 and 96.6 percent, respectively); and there was an 18.7 percentage point difference between the rates for Pacific Islander males and females (73.0 and 91.7 percent, respectively). Clearly, the potential to graduate varies not just by racial/ethnic group but by student gender.

School Analyses

The 2004–05 high school graduation rates for regular and alternative senior high schools are shown in Tables 7 and 8, respectively. (Regular schools offer comprehensive educational programs to a general student population, whereas alternative schools serve students with various special needs.) Compared to the prior year, 17 regular and alternative schools had higher graduation rates, two schools had the same rate, and six had lower rates. The 2004–05 graduation rate for regular high schools was 87.9 percent, up from 86.9 percent for the prior year. The alternative high school rate was 62.2 percent, much higher than the 44.9 percent rate for 2003–04. Among the large regular high schools, Gompers, Henry, Kearny, Morse, San Diego, and Serra had substantially higher graduation rates in 2004–05. Gompers' rate increased from 54.1 to 60.7 percent; Henry's from 93.8 to 97.2 percent; Kearny's from 93.8 to 96.4 percent; Morse from 78.7 to 82.0 percent; San Diego's from 74.7 to 79.3 percent; and Serra's from 87.9 to 95.2 percent. On the other hand, Crawford complex, Mission Bay, SCPA, and Scripps Ranch had substantially lower graduation rates than in 2003–04. Crawford's rate fell from 77.6 to 69.6 percent; Mission Bay's from 90.8 to 86.7 percent; SCPA's from 98.8 to 95.3 percent; and Scripps Ranch's rate dropped from 97.0 to 94.8 percent. Hoover's rate was stable at 63.6 percent. Preuss is the only school that achieved a 100 percent graduation rate.

Graduation rates for each alternative high school increased greatly, especially for Garfield, because of much lower dropout counts and higher graduate numbers. For the first time, Garfield's graduates included Joint Diploma Program graduates.

Table 7
Senior High School Graduation Rates, 2003–04 and 2004–05

School	2003–04			2004–05			Rate Change
	Dropouts Grade 9–12	Grads	Grad Rate	Dropouts Grade 9–12	Grads	Grad Rate	
Clairemont	23	236	91.1	26	254	90.7	-0.4
Cortez Hill ¹	3	14	82.4	1	24	96.0	13.6
Crawford ²	77	266	77.6	113	259	69.6	-8.0
Gompers	90	106	54.1	68	105	60.7	6.6
Henry	27	407	93.8	13	448	97.2	3.4
High Tech	2	84	97.7	1	78	98.7	1.0
Hoover	150	262	63.6	175	306	63.6	0.0
Kearny ²	19	285	93.8	11	290	96.4	2.6
La Jolla	5	381	98.7	6	349	98.3	-0.4
Madison	22	235	91.4	22	255	92.1	0.7
Mira Mesa	24	511	95.5	19	538	96.6	1.1
Mission Bay	31	304	90.8	43	281	86.7	-4.1
Morse	164	607	78.7	134	609	82.0	3.3
Mt. Everest ¹	1	12	92.3	0	15	100.0	7.7
Muir ¹	3	11	78.6	2	17	89.5	10.9
Point Loma	27	363	93.1	27	396	93.6	0.5
Preuss	0	55	100.0	0	75	100.0	0.0
SCPA ³	2	170	98.8	8	163	95.3	-3.5
San Diego ²	143	423	74.7	114	437	79.3	4.4
Scripps Ranch	14	459	97.0	25	453	94.8	-2.2
Serra	47	340	87.9	16	319	95.2	7.3
University City	24	410	94.5	13	407	96.9	2.4
Total	898	5,941	86.7	837	6,078	87.9	1.2

¹ Changes are not meaningful or reliable when small numbers are involved.

² 2004–05 complex school data are aggregated for comparison with prior year ancestor-school data.

³ School of Creative and Performing Arts

Table 8
Alternative High School Graduation Rates, 2003–04 and 2004–05

School	2003–04			2004–05			Rate Change
	Dropouts Grade 9–12	Grads	Grad Rate	Dropouts Grade 9–12	Grads ¹	Grad Rate	
Audeo ¹	—	—	—	—	21	—	—
CSSD ²	187	220	54.1	154	278	64.4	10.3
Garfield ³	72	65	47.5	55	187	77.3	29.9
Learning Choice ¹	—	—	—	—	1	—	—
Twain	159	59	27.1	141	88	38.4	11.3
Total	500	407	44.9	350	575	62.2	17.2

¹ No 2004–05 graduation rates are computed for Audeo and Learning Choice because as schools that opened after 2001–02 they do not have four years of dropout data for the computation.

² Charter School of San Diego

³ Joint Diploma Program graduates are included in Garfield's graduate count for the first time for the first time .

Summary

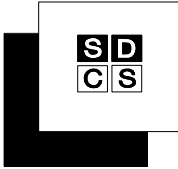
The district Grade 7–12 dropout rate fell sharply in 2004–05 from 2003–04. This decrease resulted largely from improved data collection by senior high level schools and the Research and Reporting Department. The Grade 7–8 dropout rate decreased, while the Grade 9–12 rate decreased considerably more. Rate reductions were seen across all demographics. However, the general patterns in the data persisted. African American and Hispanic students were most at risk of dropping out, male students were more prone to drop out than female students, and economically disadvantaged students had higher dropout rates than other students, as did English learner students.

The district 2004–05 graduation rate was higher than the prior year; most schools had graduation rates higher than those for 2003–04, especially alternative schools.

Report prepared by Gary W. Knowles

Appendix A

2004–05 District Dropout Data Sheet



San Diego City Schools

2004-2005 Dropout Counts and Rates by Grade Level, Ethnicity, and Gender

DISTRICT SUMMARY (000)

Grade	Afr. Am.		Asian		Filipino		Hispanic		Indoch.		Nat. Am.		Pac. Isl.		White		Total			Rates per 100			
	M	F	M	F	M	F	M	F	M	F	M	F	M	F	M	F	M	F	All	M	F	Total	
Dropout Counts	7	31	23	2	1	6	6	45	53	3	4	1	0	0	0	16	17	104	104	208	1.9	2.1	2.0
	8	27	20	3	1	5	5	39	37	8	2	1	0	0	0	3	9	86	74	160	1.6	1.5	1.5
	9	35	30	0	0	6	6	104	76	3	6	0	1	4	0	30	32	182	151	333	3.3	2.8	3.0
	10	33	14	2	0	2	6	76	65	4	3	1	0	0	1	12	11	130	100	230	2.6	2.0	2.3
	11	18	13	1	1	6	7	78	63	6	2	1	0	2	1	26	16	138	103	241	3.0	2.3	2.7
	12	18	24	2	2	7	4	79	58	13	2	0	2	4	0	36	27	159	119	278	4.4	3.2	3.8
Totals (Grades 7-12)		162	124	10	5	32	34	421	352	37	19	4	3	10	2	123	112	799	651	1,450	2.7	2.3	2.5
Ethnic Totals		286		15		66		773		56		7		12		235							

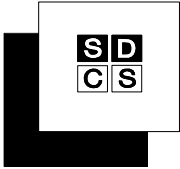
Grades	Afr. Am.	Asian	Filipino	Hispanic	Indoch.	Nat. Am.	Pac. Isl.	White	Rates per 100		
									M	F	Total
7-12	3.5	0.9	1.4	3.3	1.6	2.2	2.1	1.5	2.7	2.3	2.5
8-12	3.4	0.8	1.4	3.6	1.7	2.3	2.6	1.5	2.9	2.3	2.6
9-12	3.5	0.7	1.4	4.2	1.7	2.5	3.3	1.8	3.2	2.5	2.9
10-12	3.2	0.9	1.4	4.4	1.7	2.8	3.0	1.7	3.2	2.4	2.8

Grade	Afr. Am.	Asian	Filipino	Hispanic	Indoch.	Nat. Am.	Pac. Isl.	White
7	3.8	1.1	1.5	2.1	1.2	1.5	0.0	1.3
8	3.1	1.4	1.3	1.7	1.7	1.9	0.0	0.5
9	4.2	0.0	1.5	3.9	1.5	1.6	4.0	2.1
10	3.1	0.6	1.0	3.5	1.1	2.1	1.0	0.9
11	2.5	0.7	1.6	4.3	1.3	1.9	3.1	1.6
12	4.1	1.6	1.4	6.2	2.8	4.7	5.5	2.6

Grades	Afr. Am.	Asian	Filipino	Hispanic	Indoch.	Nat. Am.	Pac. Isl.	White	Rates per 100		
									M	F	Total
9-12	13.2	2.9	5.4	16.7	6.7	9.9	13.0	7.0	12.6	9.9	11.3
10-12	9.4	2.9	4.0	13.3	5.2	8.4	9.3	5.0	9.7	7.3	8.5

Appendix B

**2004–05 School Dropout Data Sheets
By School Type**



San Diego City Schools

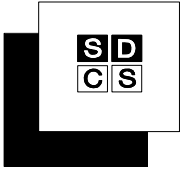
2004-2005 Dropout Counts and Rates by Grade Level, Ethnicity, and Gender

BELL (302)

Grade	Afr. Am.		Asian		Filipino		Hispanic		Indoch.		Nat. Am.		Pac. Isl.		White		Total			Rates per 100		
	M	F	M	F	M	F	M	F	M	F	M	F	M	F	M	F	M	F	All	M	F	Total
Dropout Counts	7	1	4	0	3	4	3	7	0	0	1	0	0	0	0	3	8	18	26	2.7	7.0	4.7
	8	3	2	0	4	2	5	2	0	0	0	0	0	0	1	12	7	19	4.2	2.6	3.4	
	9	3	2	0	3	2	4	7	0	0	0	0	1	3	11	14	25	4.2	5.2	4.7		
Totals (Grades 7-9)	7	7	8	0	10	8	12	16	0	0	1	0	0	0	1	7	31	39	70	3.7	4.9	4.3
Ethnic Totals	15		0		18		28		0		1		0		8							

Rates by Grade

Grade	Afr. Am.	Asian	Filipino	Hispanic	Indoch.	Nat. Am.	Pac. Isl.	White
7	4.6	0.0	3.3	5.5	0.0	50.0	0.0	8.6
8	4.8	0.0	2.9	3.5	0.0	0.0	0.0	4.8
9	5.3	0.0	2.4	6.9	0.0	0.0	0.0	9.5



San Diego City Schools

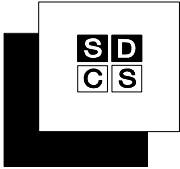
2004-2005 Dropout Counts and Rates by Grade Level, Ethnicity, and Gender

CHALLENGER (303)

Grade	Afr. Am.		Asian		Filipino		Hispanic		Indoch.		Nat. Am.		Pac. Isl.		White		Total			Rates per 100		
	M	F	M	F	M	F	M	F	M	F	M	F	M	F	M	F	M	F	All	M	F	Total
Dropout Counts	7	0	0	0	0	0	0	0	0	0	0	0	0	0	0	0	0	0	0	0.0	0.0	0.0
	8	0	0	0	0	0	0	0	0	0	0	0	0	0	0	0	0	0	0	0.0	0.0	0.0
Totals (Grades 7-8)		0	0	0	0	0	0	0	0	0	0	0	0	0	0	0	0	0	0	0.0	0.0	0.0
Ethnic Totals		0		0		0		0		0		0		0		0						

Rates by Grade

Grade	Afr. Am.	Asian	Filipino	Hispanic	Indoch.	Nat. Am.	Pac. Isl.	White
7	0.0	0.0	0.0	0.0	0.0	0.0	0.0	0.0
8	0.0	0.0	0.0	0.0	0.0	0.0	0.0	0.0



San Diego City Schools

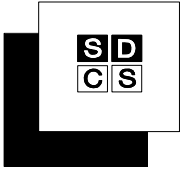
2004-2005 Dropout Counts and Rates by Grade Level, Ethnicity, and Gender

CLARK (322)

Grade	Afr. Am.		Asian		Filipino		Hispanic		Indoch.		Nat. Am.		Pac. Isl.		White		Total			Rates per 100		
	M	F	M	F	M	F	M	F	M	F	M	F	M	F	M	F	M	F	All	M	F	Total
Dropout Counts	7	2	0		0		2	3	0	0		0		1	0	5	3	8	1.6	1.2	1.4	
	8	1	1		0	0	8	4	1	0		0	0	0	0	10	5	15	3.7	2.1	2.9	
Totals (Grades 7-8)		3	1		0	0	10	7	1	0		0	0	0	1	0	15	8	23	2.6	1.6	2.1
Ethnic Totals		4			0		0		17			1		0		0		1				

Rates by Grade

Grade	Afr. Am.	Asian	Filipino	Hispanic	Indoch.	Nat. Am.	Pac. Isl.	White
7	2.7	0.0	0.0	1.2	0.0	0.0		5.9
8	4.3	0.0	0.0	3.2	1.8	0.0	0.0	0.0



San Diego City Schools

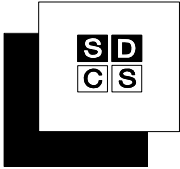
2004-2005 Dropout Counts and Rates by Grade Level, Ethnicity, and Gender

CORREIA (304)

Grade	Afr. Am.		Asian		Filipino		Hispanic		Indoch.		Nat. Am.		Pac. Isl.		White		Total			Rates per 100		
	M	F	M	F	M	F	M	F	M	F	M	F	M	F	M	F	All	M	F	Total		
Dropout Counts	7	1	0	0	0	0	0	0	0	0	0	0	0	0	2	2	3	2	5	1.2	0.8	1.0
	8	0	0	0	0	0	0	0	0	0	0	0	0	0	0	0	0	0	0	0.0	0.0	0.0
Totals (Grades 7-8)		1	0	0	0	0	0	0	0	0	0	0	0	0	2	2	3	2	5	0.6	0.4	0.5
Ethnic Totals		1		0		0		0		0		0		0	4							

Rates by Grade

Grade	Afr. Am.	Asian	Filipino	Hispanic	Indoch.	Nat. Am.	Pac. Isl.	White
7	2.4	0.0	0.0	0.0	0.0	0.0	0.0	2.3
8	0.0	0.0	0.0	0.0	0.0	0.0	0.0	0.0



San Diego City Schools

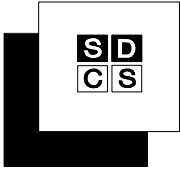
2004-2005 Dropout Counts and Rates by Grade Level, Ethnicity, and Gender

C.P.M.A. (310)

Grade	Afr. Am.		Asian		Filipino		Hispanic		Indoch.		Nat. Am.		Pac. Isl.		White		Total			Rates per 100			
	M	F	M	F	M	F	M	F	M	F	M	F	M	F	M	F	All	M	F	Total			
Dropout Counts	7	0	0	0	0	0	0	0	0	0	0	0	0	0	0	0	0	0	0	0	0.0	0.0	0.0
	8	0	0	0	0	0	1	0	0	0	0	0	0	0	0	0	1	0	1	1.1	0.0	0.5	
Totals (Grades 7-8)		0	0	0	0	0	1	0	0	0	0	0	0	0	0	0	1	0	1	0.5	0.0	0.2	
Ethnic Totals		0	0	0	0	0	1	0	0	0	0	0	0	0	0	0							

Rates by Grade

Grade	Afr. Am.	Asian	Filipino	Hispanic	Indoch.	Nat. Am.	Pac. Isl.	White
7	0.0	0.0	0.0	0.0	0.0	0.0	0.0	0.0
8	0.0	0.0	0.0	1.9	0.0	0.0	0.0	0.0



San Diego City Schools

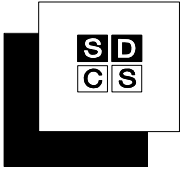
2004-2005 Dropout Counts and Rates by Grade Level, Ethnicity, and Gender

DE PORTOLA (327)

Grade	Afr. Am.		Asian		Filipino		Hispanic		Indoch.		Nat. Am.		Pac. Isl.		White		Total			Rates per 100		
	M	F	M	F	M	F	M	F	M	F	M	F	M	F	M	F	All	M	F	Total		
Dropout Counts	7	0	0	0	0	0	0	0	0	0	0	0	0	0	0	0	0	0	0	0.0	0.0	0.0
	8	1	0	0	0	0	1	0	0	0	0	0	0	0	0	0	2	0	2	1.1	0.0	0.6
Totals (Grades 7-8)		1	0	0	0	0	1	0	0	0	0	0	0	0	0	0	2	0	2	0.6	0.0	0.3
Ethnic Totals		1		0		0	1		0		0		0		0							

Rates by Grade

Grade	Afr. Am.	Asian	Filipino	Hispanic	Indoch.	Nat. Am.	Pac. Isl.	White
7	0.0	0.0	0.0	0.0	0.0	0.0	0.0	0.0
8	2.5	0.0	0.0	1.2	0.0	0.0	0.0	0.0



San Diego City Schools

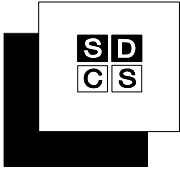
2004-2005 Dropout Counts and Rates by Grade Level, Ethnicity, and Gender

FARB (367)

Grade	Afr. Am.		Asian		Filipino		Hispanic		Indoch.		Nat. Am.		Pac. Isl.		White		Total			Rates per 100		
	M	F	M	F	M	F	M	F	M	F	M	F	M	F	M	F	All	M	F	Total		
Dropout Counts	7	1	0	0	0	0	0	0	0	1	0	0	0	0	1	1	2	2	4	1.2	1.5	1.3
	8	1	0	0	0	1	0	0	1	0	0	0	0	0	2	2	3	5	1.3	2.1	1.7	
Totals (Grades 7-8)		2	0	0	0	1	0	0	1	0	1	0	0	0	0	3	4	5	9	1.2	1.8	1.5
Ethnic Totals		2		0		1		1		1		0		0		4						

Rates by Grade

Grade	Afr. Am.	Asian	Filipino	Hispanic	Indoch.	Nat. Am.	Pac. Isl.	White
7	2.0	0.0	0.0	0.0	5.6	0.0	0.0	2.9
8	2.0	0.0	5.6	0.8	0.0	0.0	0.0	2.5



San Diego City Schools

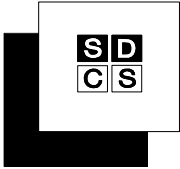
2004-2005 Dropout Counts and Rates by Grade Level, Ethnicity, and Gender

HOLLY DRIVE (144)

Grade	Afr. Am.		Asian		Filipino		Hispanic		Indoch.		Nat. Am.		Pac. Isl.		White		Total		Rates per 100			
	M	F	M	F	M	F	M	F	M	F	M	F	M	F	M	F	All	M	F	Total		
Dropout Counts	7	0	0				0	0							0	0	0	0	0	0.0	0.0	0.0
	8	0	1				0								0	1	1	1	0.0	33.3	14.3	
Totals (Grades 7-8)		0	1				0	0							0	0	0	1	1	0.0	4.5	2.6
Ethnic Totals		1					0								0							

Rates by Grade

Grade	Afr. Am.	Asian	Filipino	Hispanic	Indoch.	Nat. Am.	Pac. Isl.	White
7	0.0			0.0				0.0
8	16.7			0.0				



San Diego City Schools

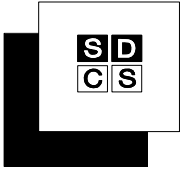
2004-2005 Dropout Counts and Rates by Grade Level, Ethnicity, and Gender

KEILLER (365)

Grade	Afr. Am.		Asian		Filipino		Hispanic		Indoch.		Nat. Am.		Pac. Isl.		White		Total			Rates per 100										
	M	F	M	F	M	F	M	F	M	F	M	F	M	F	M	F	M	F	All	M	F	Total								
Dropout Counts	7	8	2	0	0	0	1	4	4	0	0	0	0	0	0	0	12	7	19	12.4	7.8	10.2								
	8	2	1	0	0	0	1	1	6	0	0	0	0	0	0	3	8	11	2.9	6.7	4.9									
Totals (Grades 7-8)	10		3		0		0		2		5		10		0		0		15		15		30		7.4		7.2		7.3	
Ethnic Totals	13		0		2		15		0		0		0		0															

Rates by Grade

Grade	Afr. Am.	Asian	Filipino	Hispanic	Indoch.	Nat. Am.	Pac. Isl.	White
7	13.3	0.0	16.7	8.6	0.0		0.0	0.0
8	3.3	0.0	7.7	6.9	0.0	0.0	0.0	0.0



San Diego City Schools

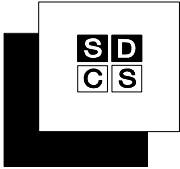
2004-2005 Dropout Counts and Rates by Grade Level, Ethnicity, and Gender

HIGH TECH (306)

Grade	Afr. Am.		Asian		Filipino		Hispanic		Indoch.		Nat. Am.		Pac. Isl.		White		Total			Rates per 100		
	M	F	M	F	M	F	M	F	M	F	M	F	M	F	M	F	M	F	All	M	F	Total
Dropout Counts	7	0	0	0	0	0	0	0	0	0	0	0	0	0	0	0	0	0	0	0.0	0.0	0.0
	8	0	0	0	0	0	0	0	0	0	0	0	0	0	0	0	0	0	0.0	0.0	0.0	
Totals (Grades 7-8)		0	0	0	0	0	0	0	0	0	0	0	0	0	0	0	0	0	0.0	0.0	0.0	
Ethnic Totals		0		0		0		0		0		0		0		0						

Rates by Grade

Grade	Afr. Am.	Asian	Filipino	Hispanic	Indoch.	Nat. Am.	Pac. Isl.	White
7	0.0	0.0	0.0	0.0	0.0	0.0	0.0	0.0
8	0.0	0.0	0.0	0.0	0.0		0.0	0.0



San Diego City Schools

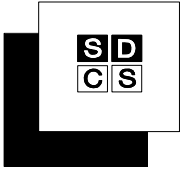
2004-2005 Dropout Counts and Rates by Grade Level, Ethnicity, and Gender

KING/CHAVEZ (160)

Grade	Afr. Am.		Asian		Filipino		Hispanic		Indoch.		Nat. Am.		Pac. Isl.		White		Total		Rates per 100		
	M	F	M	F	M	F	M	F	M	F	M	F	M	F	M	F	All	M	F	Total	
Dropout Counts	7	0					0	1							0	1	1	0.0	3.6	1.8	
	8						1	0							1	1	2	4.8	3.3	3.9	
Totals (Grades 7-8)		1					1	1							1	2	3	2.0	3.4	2.8	
Ethnic Totals		1					2														

Rates by Grade

Grade	Afr. Am.	Asian	Filipino	Hispanic	Indoch.	Nat. Am.	Pac. Isl.	White
7	0.0			1.9				
8				2.0				



San Diego City Schools

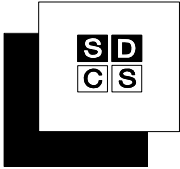
2004-2005 Dropout Counts and Rates by Grade Level, Ethnicity, and Gender

KROC (307)

Grade	Afr. Am.		Asian		Filipino		Hispanic		Indoch.		Nat. Am.		Pac. Isl.		White		Total			Rates per 100			
	M	F	M	F	M	F	M	F	M	F	M	F	M	F	M	F	All	M	F	Total			
Dropout Counts	7	1	1	0	0	0	0	1	0	0	1	0	0	0	1	2	3	4	7	1.5	2.0	1.8	
	8	0	0	0	0	0	0	2	0	0	0	0	0	1	1	1	3	4	0.5	1.6	1.0		
Totals (Grades 7-8)		1	1	0	0	0	0	1	2	0	1	0	0	0	0	2	3	4	7	11	1.0	1.8	1.4
Ethnic Totals		2		0		0		3		1		0		0		5							

Rates by Grade

Grade	Afr. Am.	Asian	Filipino	Hispanic	Indoch.	Nat. Am.	Pac. Isl.	White
7	3.3	0.0	0.0	0.6	4.2	0.0	0.0	2.7
8	0.0	0.0	0.0	1.0	0.0	0.0	0.0	2.3



San Diego City Schools

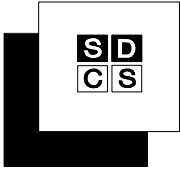
2004-2005 Dropout Counts and Rates by Grade Level, Ethnicity, and Gender

LANGUAGE ACADEMY (170)

Grade	Afr. Am.		Asian		Filipino		Hispanic		Indoch.		Nat. Am.		Pac. Isl.		White		Total			Rates per 100		
	M	F	M	F	M	F	M	F	M	F	M	F	M	F	M	F	All	M	F	Total		
Dropout Counts	7	0	0		0		0	0	0	0	0		0	0	0	0	0	0	0	0.0	0.0	0.0
	8	0	2		0		0	0	0	0		0	0	0	0	0	2	2	0.0	6.7	4.7	
Totals (Grades 7-8)		0	2		0		0	0	0	0		0	0	0	0	2	2	0.0	2.9	1.9		
Ethnic Totals		2		0		0		0		0		0		0								

Rates by Grade

Grade	Afr. Am.	Asian	Filipino	Hispanic	Indoch.	Nat. Am.	Pac. Isl.	White
7	0.0	0.0		0.0	0.0	0.0	0.0	0.0
8	25.0	0.0	0.0	0.0				0.0



San Diego City Schools

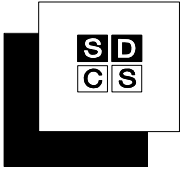
2004-2005 Dropout Counts and Rates by Grade Level, Ethnicity, and Gender

LEWIS (311)

Grade	Afr. Am.		Asian		Filipino		Hispanic		Indoch.		Nat. Am.		Pac. Isl.		White		Total			Rates per 100		
	M	F	M	F	M	F	M	F	M	F	M	F	M	F	M	F	M	F	All	M	F	Total
Dropout Counts	7	0	0	0	0	0	0	0	0	0	0	0	0	0	0	0	0	0	0	0.0	0.0	0.0
	8	2	0	0	0	0	0	0	1	0	0	0	0	0	0	0	3	0	3	1.5	0.0	0.8
Totals (Grades 7-8)		2	0	0	0	0	0	0	1	0	0	0	0	0	0	0	3	0	3	0.8	0.0	0.4
Ethnic Totals		2		0		0		0	1		0		0		0							

Rates by Grade

Grade	Afr. Am.	Asian	Filipino	Hispanic	Indoch.	Nat. Am.	Pac. Isl.	White
7	0.0	0.0	0.0	0.0	0.0	0.0	0.0	0.0
8	5.0	0.0	0.0	0.0	3.7	0.0	0.0	0.0



San Diego City Schools

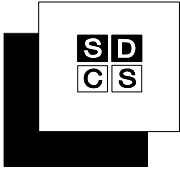
2004-2005 Dropout Counts and Rates by Grade Level, Ethnicity, and Gender

LONGFELLOW (181)

Grade	Afr. Am.		Asian		Filipino		Hispanic		Indoch.		Nat. Am.		Pac. Isl.		White		Total			Rates per 100		
	M	F	M	F	M	F	M	F	M	F	M	F	M	F	M	F	All	M	F	Total		
Dropout Counts	7	0	0	0			0	0					0	0	0	0	0	0.0	0.0	0.0		
	8	0	0				0	1					0	0	0	1	1	0.0	7.1	4.0		
Totals (Grades 7-8)		0	0	0			0	1					0	0	0	1	1	0.0	2.9	1.9		
Ethnic Totals		0		0			1						0									

Rates by Grade

Grade	Afr. Am.	Asian	Filipino	Hispanic	Indoch.	Nat. Am.	Pac. Isl.	White
7	0.0	0.0		0.0				0.0
8	0.0			10.0				0.0



San Diego City Schools

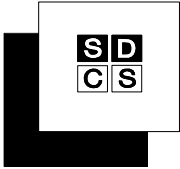
2004-2005 Dropout Counts and Rates by Grade Level, Ethnicity, and Gender

MANN (312)

Grade	Afr. Am.		Asian		Filipino		Hispanic		Indoch.		Nat. Am.		Pac. Isl.		White		Total			Rates per 100			
	M	F	M	F	M	F	M	F	M	F	M	F	M	F	M	F	M	F	All	M	F	Total	
Dropout Counts	7	2	0	0	0	0	1	0	5	0	0	0	0	0	0	1	0	4	5	9	1.6	2.6	2.0
	8	2	1	0	0	0	1	1	1	1	0	0	0	0	0	0	0	4	2	6	1.9	1.0	1.5
Totals (Grades 7-8)		4	1	0	0	1	0	1	6	1	0	0	0	0	1	0	8	7	15	1.8	1.8	1.8	
Ethnic Totals		5		0		1		7		1		0		0		1							

Rates by Grade

Grade	Afr. Am.	Asian	Filipino	Hispanic	Indoch.	Nat. Am.	Pac. Isl.	White
7	2.4	0.0	20.0	2.0	0.0	0.0	0.0	10.0
8	3.8	0.0	0.0	0.9	1.3	0.0	0.0	0.0



San Diego City Schools

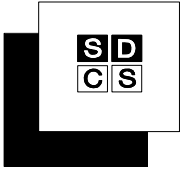
2004-2005 Dropout Counts and Rates by Grade Level, Ethnicity, and Gender

MARSHALL (308)

Grade	Afr. Am.		Asian		Filipino		Hispanic		Indoch.		Nat. Am.		Pac. Isl.		White		Total			Rates per 100		
	M	F	M	F	M	F	M	F	M	F	M	F	M	F	M	F	All	M	F	Total		
Dropout Counts	7	0	0	0	0	0	1	1	0	0	0	0	0	0	0	4	1	5	6	0.5	2.3	1.4
	8	0	0	0	0	0	0	0	0	0	0	0	0	0	1	0	1	1	0.0	0.5	0.3	
Totals (Grades 7-8)		0	0	0	0	0	1	1	0	0	0	0	0	0	5	1	6	7	0.2	1.5	0.9	
Ethnic Totals		0		0		1		1		0		0		0	5							

Rates by Grade

Grade	Afr. Am.	Asian	Filipino	Hispanic	Indoch.	Nat. Am.	Pac. Isl.	White
7	0.0	0.0	2.9	2.3	0.0	0.0	0.0	1.5
8	0.0	0.0	0.0	0.0	0.0	0.0		0.4



San Diego City Schools

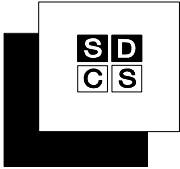
2004-2005 Dropout Counts and Rates by Grade Level, Ethnicity, and Gender

MARSTON (313)

Grade	Afr. Am.		Asian		Filipino		Hispanic		Indoch.		Nat. Am.		Pac. Isl.		White		Total			Rates per 100		
	M	F	M	F	M	F	M	F	M	F	M	F	M	F	M	F	M	F	All	M	F	Total
Dropout Counts	7	1	0	0	0	0	0	0	0	0	0	0	0	0	0	0	1	0	1	0.4	0.0	0.2
	8	0	0	0	0	0	0	0	0	0	0	0	0	0	0	0	0	0	0	0.0	0.0	0.0
Totals (Grades 7-8)		1	0	0	0	0	0	0	0	0	0	0	0	0	0	0	1	0	1	0.2	0.0	0.1
Ethnic Totals		1		0		0		0		0		0		0		0						

Rates by Grade

Grade	Afr. Am.	Asian	Filipino	Hispanic	Indoch.	Nat. Am.	Pac. Isl.	White
7	5.6	0.0	0.0	0.0	0.0	0.0	0.0	0.0
8	0.0	0.0	0.0	0.0	0.0	0.0	0.0	0.0



San Diego City Schools

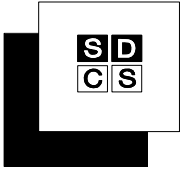
2004-2005 Dropout Counts and Rates by Grade Level, Ethnicity, and Gender

MEMORIAL (315)

Grade	Afr. Am.		Asian		Filipino		Hispanic		Indoch.		Nat. Am.		Pac. Isl.		White		Total			Rates per 100		
	M	F	M	F	M	F	M	F	M	F	M	F	M	F	M	F	M	F	All	M	F	Total
Dropout Counts	7	0	0		0		8	5			0				1	0	9	5	14	3.2	2.2	2.7
	8	1	0			0	6	7		1	1			1	0	9	8	17	3.4	3.4	3.4	
	9	0	0			0	9	8						0	1	9	10	19	9.9	11.5	10.7	
Totals (Grades 7-9)		1	0			0	0	23	20	2	2	1			2	1	27	23	50	4.3	4.1	4.2
Ethnic Totals		1				0		43		2		1			3							

Rates by Grade

Grade	Afr. Am.	Asian	Filipino	Hispanic	Indoch.	Nat. Am.	Pac. Isl.	White
7	0.0		0.0	2.7		0.0		14.3
8	2.9		0.0	2.9	100.0	100.0		14.3
9	0.0		0.0	9.9				50.0



San Diego City Schools

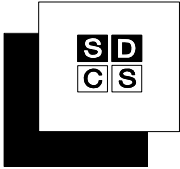
2004-2005 Dropout Counts and Rates by Grade Level, Ethnicity, and Gender

MONTGOMERY (316)

Grade	Afr. Am.		Asian		Filipino		Hispanic		Indoch.		Nat. Am.		Pac. Isl.		White		Total			Rates per 100		
	M	F	M	F	M	F	M	F	M	F	M	F	M	F	M	F	All	M	F	Total		
Dropout Counts	7	0	0	0	0	0	1	1	0	0			0	0	0	0	1	1	2	0.8	1.0	0.9
	8	1	1	0	0	0	0	0	1	0		0		0	1	2	2	4	1.6	1.7	1.6	
Totals (Grades 7-8)		1	1	0	0	0	0	1	1	1	0	0	0	0	0	1	3	3	6	1.2	1.4	1.3
Ethnic Totals		2		0		0		2		1		0		0		1						

Rates by Grade

Grade	Afr. Am.	Asian	Filipino	Hispanic	Indoch.	Nat. Am.	Pac. Isl.	White
7	0.0	0.0	0.0	1.7	0.0		0.0	0.0
8	6.3	0.0	0.0	0.0	2.2	0.0		3.1



San Diego City Schools

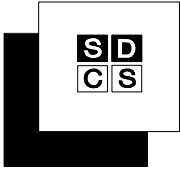
2004-2005 Dropout Counts and Rates by Grade Level, Ethnicity, and Gender

MUIRLANDS (317)

Grade	Afr. Am.		Asian		Filipino		Hispanic		Indoch.		Nat. Am.		Pac. Isl.		White		Total			Rates per 100		
	M	F	M	F	M	F	M	F	M	F	M	F	M	F	M	F	M	F	All	M	F	Total
Dropout Counts	7	0	0	0	0	0	0	0	0	0	0	0	0	0	0	0	0	0	0	0.0	0.0	0.0
	8	0	0	0	0	0	0	0	0	0	0	0	0	0	0	0	0	0	0	0.0	0.0	0.0
Totals (Grades 7-8)		0	0	0	0	0	0	0	0	0	0	0	0	0	0	0	0	0	0	0.0	0.0	0.0
Ethnic Totals		0		0	0		0	0		0		0	0		0							

Rates by Grade

Grade	Afr. Am.	Asian	Filipino	Hispanic	Indoch.	Nat. Am.	Pac. Isl.	White
7	0.0	0.0	0.0	0.0	0.0	0.0	0.0	0.0
8	0.0	0.0	0.0	0.0	0.0	0.0	0.0	0.0



San Diego City Schools

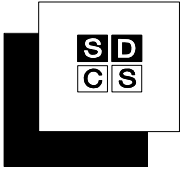
2004-2005 Dropout Counts and Rates by Grade Level, Ethnicity, and Gender

O'FARRELL (319)

Grade	Afr. Am.		Asian		Filipino		Hispanic		Indoch.		Nat. Am.		Pac. Isl.		White		Total			Rates per 100			
	M	F	M	F	M	F	M	F	M	F	M	F	M	F	M	F	All	M	F	Total			
Dropout Counts	7	2	0	0	0	1	0	1	4	0	0	0	0	0	0	1	0	5	4	9	2.1	1.7	1.9
	8	1	0	0	0	0	2	0	1	0	0	0	0	0	0	0	1	3	4	0.4	1.3	0.8	
Totals (Grades 7-8)		3	0	0	0	1	2	1	5	0	0	0	0	0	0	1	0	6	7	13	1.2	1.5	1.3
Ethnic Totals		3		0		3		6		0		0		0		1							

Rates by Grade

Grade	Afr. Am.	Asian	Filipino	Hispanic	Indoch.	Nat. Am.	Pac. Isl.	White
7	1.4	0.0	0.8	2.9	0.0	0.0	0.0	6.7
8	0.7	0.0	1.5	0.6	0.0	0.0	0.0	0.0



San Diego City Schools

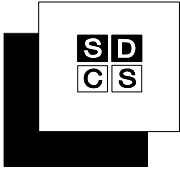
2004-2005 Dropout Counts and Rates by Grade Level, Ethnicity, and Gender

PACIFIC BEACH (320)

Grade	Afr. Am.		Asian		Filipino		Hispanic		Indoch.		Nat. Am.		Pac. Isl.		White		Total			Rates per 100		
	M	F	M	F	M	F	M	F	M	F	M	F	M	F	M	F	All	M	F	Total		
Dropout Counts	7	0	0	0	0	0	0	0	0	0	0	0	0	0	1	1	1	1	2	0.7	0.7	0.7
	8	0	0	0	0	0	0	0	0	0	0	0	0	1	0	1	0	1	0.6	0.0	0.3	
Totals (Grades 7-8)		0	0	0	0	0	0	0	0	0	0	0	0	2	1	2	1	3	0.7	0.4	0.5	
Ethnic Totals		0		0		0		0		0		0		3								

Rates by Grade

Grade	Afr. Am.	Asian	Filipino	Hispanic	Indoch.	Nat. Am.	Pac. Isl.	White
7	0.0	0.0	0.0	0.0	0.0	0.0	0.0	3.6
8	0.0	0.0	0.0	0.0	0.0	0.0	0.0	1.3



San Diego City Schools

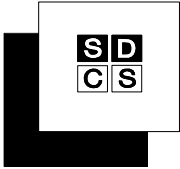
2004-2005 Dropout Counts and Rates by Grade Level, Ethnicity, and Gender

PERSHING (321)

Grade	Afr. Am.		Asian		Filipino		Hispanic		Indoch.		Nat. Am.		Pac. Isl.		White		Total			Rates per 100		
	M	F	M	F	M	F	M	F	M	F	M	F	M	F	M	F	M	F	All	M	F	Total
Dropout Counts	7	0	0	0	0	0	1	1	0	0	0	0	0	0	0	0	1	1	2	0.6	0.7	0.6
	8	0	0	1	0	0	0	0	0	0	0	0	0	0	0	1	0	1	0.6	0.0	0.3	
Totals (Grades 7-8)		0	0	1	0	0	1	1	0	0	0	0	0	0	0	2	1	3	0.6	0.3	0.5	
Ethnic Totals		0		1		0	2		0		0		0									

Rates by Grade

Grade	Afr. Am.	Asian	Filipino	Hispanic	Indoch.	Nat. Am.	Pac. Isl.	White
7	0.0	0.0	0.0	1.3	0.0	0.0	0.0	0.0
8	0.0	12.5	0.0	0.0	0.0	0.0	0.0	0.0



San Diego City Schools

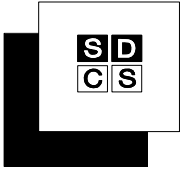
2004-2005 Dropout Counts and Rates by Grade Level, Ethnicity, and Gender

ROOSEVELT (324)

Grade	Afr. Am.		Asian		Filipino		Hispanic		Indoch.		Nat. Am.		Pac. Isl.		White		Total			Rates per 100			
	M	F	M	F	M	F	M	F	M	F	M	F	M	F	M	F	All	M	F	Total			
Dropout Counts	7	1	1	1	0	0	5	4	0	1			0	0	2	1	9	7	16	5.5	5.1	5.3	
	8	1	1	0	0	0	2	1	0	0	0	0	0	0	0	0	3	2	5	1.5	1.0	1.3	
Totals (Grades 7-8)		2	2	1	0	0	7	5	0	1	0	0	0	0	2	1	12	9	21	3.4	2.7	3.0	
Ethnic Totals		4		1		0		12		1		0		0		3							

Rates by Grade

Grade	Afr. Am.	Asian	Filipino	Hispanic	Indoch.	Nat. Am.	Pac. Isl.	White
7	4.7	33.3	0.0	4.6	20.0		0.0	6.8
8	3.3	0.0	0.0	1.2	0.0	0.0	0.0	0.0



San Diego City Schools

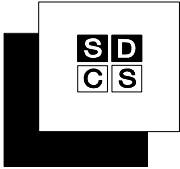
2004-2005 Dropout Counts and Rates by Grade Level, Ethnicity, and Gender

SAN DIEGO COOP (256)

Grade	Afr. Am.		Asian		Filipino		Hispanic		Indoch.		Nat. Am.		Pac. Isl.		White		Total		Rates per 100			
	M	F	M	F	M	F	M	F	M	F	M	F	M	F	M	F	All	M	F	Total		
Dropout Counts	7	0	0	0	0	0	1	0			0	0	0	0	0	0	1	0	1	5.6	0.0	2.5
Totals (Grade 7)		0	0	0	0	0	1	0			0	0	0	0	0	0	1	0	1	5.6	0.0	2.5
Ethnic Totals		0	0	0	0	0	1	0			0	0	0	0	0	0						

Rates by Grade

Grade	Afr. Am.	Asian	Filipino	Hispanic	Indoch.	Nat. Am.	Pac. Isl.	White
7	0.0	0.0	0.0	10.0		0.0	0.0	0.0



San Diego City Schools

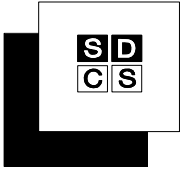
2004-2005 Dropout Counts and Rates by Grade Level, Ethnicity, and Gender

SO CALIF CONNECTIONS (118)

Grade	Afr. Am.		Asian		Filipino		Hispanic		Indoch.		Nat. Am.		Pac. Isl.		White		Total		Rates per 100			
	M	F	M	F	M	F	M	F	M	F	M	F	M	F	M	F	All	M	F	Total		
Dropout Counts	7						0								0	0	0	0	0	0.0	0.0	0.0
	8	0					0	0							0	0	0	0	0	0.0	0.0	0.0
Totals (Grades 7-8)		0					0	0							0	0	0	0	0	0.0	0.0	0.0
Ethnic Totals		0					0								0							

Rates by Grade

Grade	Afr. Am.	Asian	Filipino	Hispanic	Indoch.	Nat. Am.	Pac. Isl.	White
7				0.0				0.0
8	0.0			0.0				0.0



San Diego City Schools

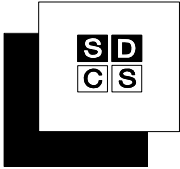
2004-2005 Dropout Counts and Rates by Grade Level, Ethnicity, and Gender

STANDLEY (325)

Grade	Afr. Am.		Asian		Filipino		Hispanic		Indoch.		Nat. Am.		Pac. Isl.		White		Total			Rates per 100		
	M	F	M	F	M	F	M	F	M	F	M	F	M	F	M	F	All	M	F	Total		
Dropout Counts	7	0	1	0	0	0	0	0	0	0	0	0	0	0	0	3	0	4	4	0.0	1.9	0.9
	8	0	0	1	0	0	0	0	0	0	0	0	0	0	0	1	0	1	0.4	0.0	0.2	
Totals (Grades 7-8)		0	1	1	0	0	0	0	0	0	0	0	0	0	0	3	1	4	5	0.2	1.0	0.6
Ethnic Totals		1		1		0		0		0		0		3								

Rates by Grade

Grade	Afr. Am.	Asian	Filipino	Hispanic	Indoch.	Nat. Am.	Pac. Isl.	White
7	2.9	0.0	0.0	0.0	0.0	0.0	0.0	1.6
8	0.0	3.1	0.0	0.0	0.0	0.0	0.0	0.0



San Diego City Schools

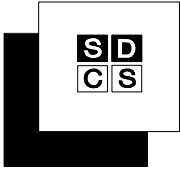
2004-2005 Dropout Counts and Rates by Grade Level, Ethnicity, and Gender

TAFIT (326)

Grade	Afr. Am.		Asian		Filipino		Hispanic		Indoch.		Nat. Am.		Pac. Isl.		White		Total			Rates per 100		
	M	F	M	F	M	F	M	F	M	F	M	F	M	F	M	F	M	F	All	M	F	Total
Dropout Counts	7	0	0	0	0	0	1	0	0	0	0	0	0	0	0	0	1	0	1	0.7	0.0	0.4
	8	0	1	0	1	0	1	0	0	0	0	0	0	0	0	0	1	2	3	0.7	1.7	1.1
Totals (Grades 7-8)		0	1	0	1	0	2	0	0	0	0	0	0	0	0	0	2	2	4	0.7	0.9	0.8
Ethnic Totals		1		1		0	2		0		0		0		0							

Rates by Grade

Grade	Afr. Am.	Asian	Filipino	Hispanic	Indoch.	Nat. Am.	Pac. Isl.	White
7	0.0	0.0	0.0	1.0	0.0	0.0	0.0	0.0
8	1.9	12.5	0.0	1.1	0.0	0.0	0.0	0.0



San Diego City Schools

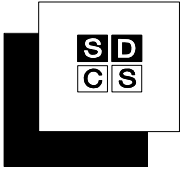
2004-2005 Dropout Counts and Rates by Grade Level, Ethnicity, and Gender

TUBMAN VILLAGE (214)

Grade	Afr. Am.		Asian		Filipino		Hispanic		Indoch.		Nat. Am.		Pac. Isl.		White		Total			Rates per 100		
	M	F	M	F	M	F	M	F	M	F	M	F	M	F	M	F	M	F	All	M	F	Total
Dropout Counts	7	0	0		0			0	0						0	0	0	0	0	0.0	0.0	0.0
	8	0	0				0	0						0	0	0	0	0	0.0	0.0	0.0	
Totals (Grades 7-8)		0	0		0		0	0						0	0	0	0	0	0.0	0.0	0.0	
Ethnic Totals		0		0			0							0								

Rates by Grade

Grade	Afr. Am.	Asian	Filipino	Hispanic	Indoch.	Nat. Am.	Pac. Isl.	White
7	0.0	0.0		0.0				0.0
8	0.0			0.0				0.0



San Diego City Schools

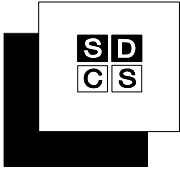
2004-2005 Dropout Counts and Rates by Grade Level, Ethnicity, and Gender

WANGENHEIM (328)

Grade	Afr. Am.		Asian		Filipino		Hispanic		Indoch.		Nat. Am.		Pac. Isl.		White		Total			Rates per 100			
	M	F	M	F	M	F	M	F	M	F	M	F	M	F	M	F	All	M	F	Total			
Dropout Counts	7	1	0	1	0	1	0	0	0	0	0	0	0	0	0	1	0	4	0	4	1.6	0.0	0.9
	8	0	0	0	0	0	0	0	0	1	0	0	0	0	0	0	0	1	0	1	0.4	0.0	0.2
Totals (Grades 7-8)		1	0	1	0	1	0	0	0	1	0	0	0	0	0	1	0	5	0	5	1.1	0.0	0.5
Ethnic Totals		1		1		1		0		1		0		0		1							

Rates by Grade

Grade	Afr. Am.	Asian	Filipino	Hispanic	Indoch.	Nat. Am.	Pac. Isl.	White
7	1.6	4.0	0.8	0.0	0.0	0.0	0.0	1.1
8	0.0	0.0	0.0	0.0	1.8	0.0	0.0	0.0



San Diego City Schools

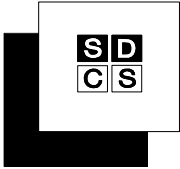
2004-2005 Dropout Counts and Rates by Grade Level, Ethnicity, and Gender

WILSON (329)

Grade	Afr. Am.		Asian		Filipino		Hispanic		Indoch.		Nat. Am.		Pac. Isl.		White		Total			Rates per 100		
	M	F	M	F	M	F	M	F	M	F	M	F	M	F	M	F	All	M	F	Total		
Dropout Counts	7	2	4	0	0	0	2	5	0	0			0	0	2	0	6	9	15	3.3	5.3	4.2
	8	1	1	0	0	0	4	2	2	0			0	0	0	1	7	4	11	3.6	2.6	3.2
Totals (Grades 7-8)		3	5	0	0	0	6	7	2	0			0	0	2	1	13	13	26	3.5	4.0	3.7
Ethnic Totals		8		0		0		13		2		0		3								

Rates by Grade

Grade	Afr. Am.	Asian	Filipino	Hispanic	Indoch.	Nat. Am.	Pac. Isl.	White
7	12.2	0.0	0.0	2.9	0.0		0.0	14.3
8	4.5	0.0	0.0	2.4	5.6		0.0	6.7



San Diego City Schools

2004-2005 Dropout Counts and Rates by Grade Level, Ethnicity, and Gender

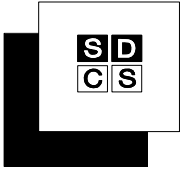
CLAIREMONT (332)

Grade	Afr. Am.		Asian		Filipino		Hispanic		Indoch.		Nat. Am.		Pac. Isl.		White		Total			Rates per 100		
	M	F	M	F	M	F	M	F	M	F	M	F	M	F	M	F	M	F	All	M	F	Total
Dropout Counts	9	1	0	0	0	0	1	0	0	0	0	1	0	0	2	1	4	2	6	1.9	0.9	1.4
	10	1	0	0	0	0	1	2	0	0	0	0	0	0	0	0	2	2	4	0.9	1.2	1.1
	11	0	0	0	0	0	4	1	0	0	0	0	0	1	0	5	1	6	3.0	0.6	1.8	
	12	0	0	0	0	0	3	4	0	0	0	0	0	2	0	5	4	9	3.1	2.8	3.0	
Totals (Grades 9-12)		2	0	0	0	0	9	7	0	0	0	1	0	0	5	1	16	9	25	2.1	1.3	1.7
Ethnic Totals		2		0		0	16		0		1		0		6							

Grades	Afr. Am.	Asian	Filipino	Hispanic	Indoch.	Nat. Am.	Pac. Isl.	White	Rates per 100		
									M	F	Total
9-12	2.4	0.0	0.0	2.5	0.0	8.3	0.0	1.0	2.1	1.3	1.7
10-12	1.6	0.0	0.0	3.7	0.0	0.0	0.0	0.7	2.2	1.5	1.9

Grade	Afr. Am.	Asian	Filipino	Hispanic	Indoch.	Nat. Am.	Pac. Isl.	White
9	5.0	0.0	0.0	0.5	0.0	50.0	0.0	1.8
10	4.3	0.0	0.0	1.9	0.0	0.0	0.0	0.0
11	0.0	0.0	0.0	3.6	0.0	0.0	0.0	0.7
12	0.0	0.0	0.0	6.4	0.0	0.0	0.0	1.3

Grades	Afr. Am.	Asian	Filipino	Hispanic	Indoch.	Nat. Am.	Pac. Isl.	White	Rates per 100		
									M	F	Total
9-12	9.1	0.0	0.0	11.8	0.0	50.0	0.0	3.8	8.7	5.5	7.1
10-12	4.3	0.0	0.0	11.4	0.0	0.0	0.0	2.1	6.9	4.6	5.8



San Diego City Schools

2004-2005 Dropout Counts and Rates by Grade Level, Ethnicity, and Gender

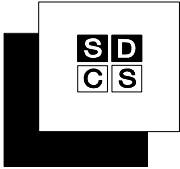
CORTEZ HILL (323)

Grade	Afr. Am.		Asian		Filipino		Hispanic		Indoch.		Nat. Am.		Pac. Isl.		White		Total			Rates per 100		
	M	F	M	F	M	F	M	F	M	F	M	F	M	F	M	F	M	F	All	M	F	Total
Dropout Counts	9	0	0				0	0							0	0	0	0	0	0.0	0.0	0.0
	10	0	0	0		0	0	0							0	0	0	0	0	0.0	0.0	0.0
	11	0	0		0		0	0					0		0	0	0	0	0	0.0	0.0	0.0
	12	0	0				1	0						0	0	0	1	0	1	7.1	0.0	3.2
Totals (Grades 9-12)		0	0	0	0	0	1	0					0	0	0	0	1	0	1	1.3	0.0	0.6
Ethnic Totals		0		0	0		1						0		0							

Grades	Afr. Am.	Asian	Filipino	Hispanic	Indoch.	Nat. Am.	Pac. Isl.	White	Rates per 100		
									M	F	Total
9-12	0.0	0.0	0.0	1.2			0.0	0.0	1.3	0.0	0.6
10-12	0.0	0.0	0.0	2.0			0.0	0.0	2.1	0.0	0.8

Grade	Afr. Am.	Asian	Filipino	Hispanic	Indoch.	Nat. Am.	Pac. Isl.	White
9	0.0			0.0				0.0
10	0.0	0.0	0.0	0.0				0.0
11	0.0	0.0	0.0	0.0			0.0	0.0
12	0.0			14.3			0.0	0.0

Grades	Afr. Am.	Asian	Filipino	Hispanic	Indoch.	Nat. Am.	Pac. Isl.	White	Rates per 100		
									M	F	Total
9-12	0.0	0.0	0.0	14.3			0.0	0.0	7.1	0.0	3.2
10-12	0.0	0.0	0.0	14.3			0.0	0.0	7.1	0.0	3.2



San Diego City Schools

2004-2005 Dropout Counts and Rates by Grade Level, Ethnicity, and Gender

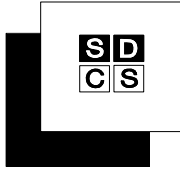
CRAWFORD CHAMP (704)

Grade	Afr. Am.		Asian		Filipino		Hispanic		Indoch.		Nat. Am.		Pac. Isl.		White		Total		Rates per 100				
	M	F	M	F	M	F	M	F	M	F	M	F	M	F	M	F	M	F	All	M	F	Total	
Dropout Counts	9	1	0			1	0	1	0	0	0			0	0	0	0	3	0	3	9.4	0.0	2.5
	10	0	0	0	0		0	1	1	0	0		0	0	0	0	1	1	2	2.3	1.2	1.6	
	11	0	0	0	0		0	0	0	0	0		0	0	0	0	0	0	0	0.0	0.0	0.0	
	12	0	1		0	0	0	0	1	0	0		0	0	1	0	1	2	3	3.3	2.9	3.1	
Totals (Grades 9-12)		1	1	0	0	1	0	2	2	0	0	0	0	0	1	0	5	3	8	3.5	1.0	1.8	
Ethnic Totals		2		0		1		4		0		0		1									

Grades	Afr. Am.	Asian	Filipino	Hispanic	Indoch.	Nat. Am.	Pac. Isl.	White	M	F	Total
9-12	1.2	0.0	20.0	2.5	0.0	0.0	0.0	4.2	3.5	1.0	1.8
10-12	0.7	0.0	0.0	3.0	0.0	0.0	0.0	5.0	1.8	1.4	1.5

Grade	Afr. Am.	Asian	Filipino	Hispanic	Indoch.	Nat. Am.	Pac. Isl.	White
9	3.2		50.0	1.7	0.0		0.0	0.0
10	0.0	0.0	0.0	4.2	0.0	0.0	0.0	0.0
11	0.0	0.0		0.0	0.0	0.0	0.0	0.0
12	2.4	0.0	0.0	4.3	0.0		0.0	9.1

Grades	Afr. Am.	Asian	Filipino	Hispanic	Indoch.	Nat. Am.	Pac. Isl.	White	M	F	Total
9-12	5.6	0.0	50.0	9.9	0.0	0.0	0.0	9.1	14.4	4.1	7.0
10-12	2.4	0.0	0.0	8.3	0.0	0.0	0.0	9.1	5.5	4.1	4.6



San Diego City Schools

2004-2005 Dropout Counts and Rates by Grade Level, Ethnicity, and Gender

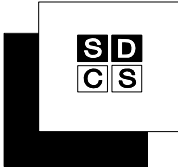
CRAWFORD IDEA (702)

Grade	Afr. Am.		Asian		Filipino		Hispanic		Indoch.		Nat. Am.		Pac. Isl.		White		Total			Rates per 100		
	M	F	M	F	M	F	M	F	M	F	M	F	M	F	M	F	M	F	All	M	F	Total
Dropout Counts	9	1	2		0		0		3	2	0	0			0	0	4	4	8	3.8	9.1	5.4
	10	0	0		0		1	0	0	0					0	0	1	0	1	1.6	0.0	1.2
	11	0	0	0	0	0	1	0	1	0					0	0	2	0	2	2.8	0.0	2.1
	12	0	0		0	0	2	0	0	1					1	0	3	1	4	5.6	4.5	5.3
Totals (Grades 9-12)		1	2		0	0	7	2	1	1					1	0	10	5	15	3.4	4.7	3.8
Ethnic Totals		3		0		0		9		2				1								

Grades	Afr. Am.	Asian	Filipino	Hispanic	Indoch.	Nat. Am.	Pac. Isl.	White	M	F	Total
9-12	3.8	0.0	0.0	5.2	2.0			3.3	3.4	4.7	3.8
10-12	0.0	0.0	0.0	4.4	2.5			4.0	3.2	1.6	2.8

Grade	Afr. Am.	Asian	Filipino	Hispanic	Indoch.	Nat. Am.	Pac. Isl.	White
9	8.3	0.0	0.0	6.0	0.0			0.0
10	0.0	0.0	0.0	3.0	0.0			0.0
11	0.0	0.0	0.0	3.3	3.1			0.0
12	0.0	0.0	0.0	7.1	3.6			12.5

Grades	Afr. Am.	Asian	Filipino	Hispanic	Indoch.	Nat. Am.	Pac. Isl.	White	M	F	Total
9-12	8.3	0.0	0.0	18.2	6.6			12.5	13.1	13.2	13.3
10-12	0.0	0.0	0.0	13.0	6.6			12.5	9.7	4.5	8.4



San Diego City Schools

2004-2005 Dropout Counts and Rates by Grade Level, Ethnicity, and Gender

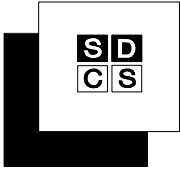
CRAWFORD LAW & BUSI (705)

Grade	Afr. Am.		Asian		Filipino		Hispanic		Indoch.		Nat. Am.		Pac. Isl.		White		Total			Rates per 100		
	M	F	M	F	M	F	M	F	M	F	M	F	M	F	M	F	M	F	All	M	F	Total
Dropout Counts	9	0	0	0	0	0	0	1	0	0	0	0	0	0	0	0	0	1	1	0.0	1.8	0.8
	10	0	0				1	1	0	0	0	0	0	0	0	0	1	1	2	1.7	1.8	1.7
	11	0	0	0			2	0	0	0			0	0	0	0	2	0	2	3.9	0.0	1.9
	12	0	0	0			0	2	0	0			0	0	0	0	0	2	2	0.0	5.4	2.4
Totals (Grades 9-12)		0	0	0	0		3	4	0	0	0	0	0	0	0	0	3	4	7	1.3	2.0	1.6
Ethnic Totals		0		0			7		0		0		0		0							

Grades	Afr. Am.	Asian	Filipino	Hispanic	Indoch.	Nat. Am.	Pac. Isl.	White	Rates per 100		
									M	F	Total
9-12	0.0	0.0		3.3	0.0	0.0	0.0	0.0	1.3	2.0	1.6
10-12	0.0	0.0		4.1	0.0	0.0	0.0	0.0	1.9	2.0	2.0

Grade	Afr. Am.	Asian	Filipino	Hispanic	Indoch.	Nat. Am.	Pac. Isl.	White
9	0.0	0.0		1.5	0.0			0.0
10	0.0	0.0		2.9	0.0	0.0	0.0	0.0
11	0.0	0.0		4.1	0.0			0.0
12	0.0	0.0		7.4	0.0			0.0

Grades	Afr. Am.	Asian	Filipino	Hispanic	Indoch.	Nat. Am.	Pac. Isl.	White	Rates per 100		
									M	F	Total
9-12	0.0	0.0		15.1	0.0	0.0	0.0	0.0	5.6	8.7	6.7
10-12	0.0	0.0		13.7	0.0	0.0	0.0	0.0	5.6	7.1	5.9



San Diego City Schools

2004-2005 Dropout Counts and Rates by Grade Level, Ethnicity, and Gender

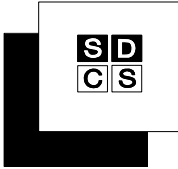
CRAWFORD MULTIMEDIA (703)

Grade	Afr. Am.		Asian		Filipino		Hispanic		Indoch.		Nat. Am.		Pac. Isl.		White		Total			Rates per 100		
	M	F	M	F	M	F	M	F	M	F	M	F	M	F	M	F	M	F	All	M	F	Total
Dropout Counts	9	2	0		0	0	2	1	0	1			0	1	4	3	7			5.1	4.8	5.0
	10	0	0		0		1	1	2	0		0	0	3	1	4			4.6	2.3	3.7	
	11	2	0	0		0	1		0	0		0	1	3	2	5			5.9	8.3	6.7	
	12	0	0		0		0	0	1	0	0	0	0	1	0	1			2.5	0.0	1.5	
Totals (Grades 9-12)		4	0	0	0	0	3	3	3	1	0	0	1	2	11	6	17			4.7	3.8	4.4
Ethnic Totals		4		0		0	6		4		0		3									

Grades	Afr. Am.	Asian	Filipino	Hispanic	Indoch.	Nat. Am.	Pac. Isl.	White	M	F	Total
9-12	5.4	0.0	0.0	3.3	4.3	0.0	0.0	11.5	4.7	3.8	4.4
10-12	4.4	0.0	0.0	2.6	4.8	0.0	0.0	10.5	4.5	3.2	4.0

Grade	Afr. Am.	Asian	Filipino	Hispanic	Indoch.	Nat. Am.	Pac. Isl.	White
9	6.9	0.0	0.0	4.3	3.2			14.3
10	0.0	0.0	0.0	3.8	8.7		0.0	0.0
11	13.3	0.0		2.9	0.0		0.0	40.0
12	0.0		0.0	0.0	4.8	0.0	0.0	0.0

Grades	Afr. Am.	Asian	Filipino	Hispanic	Indoch.	Nat. Am.	Pac. Isl.	White	M	F	Total
9-12	19.3	0.0	0.0	10.7	15.8	0.0	0.0	48.6	17.0	14.8	15.9
10-12	13.3	0.0	0.0	6.7	13.0	0.0	0.0	40.0	12.5	10.5	11.5



San Diego City Schools

2004-2005 Dropout Counts and Rates by Grade Level, Ethnicity, and Gender

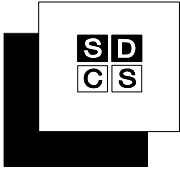
HENRY (336)

Grade	Afr. Am.		Asian		Filipino		Hispanic		Indoch.		Nat. Am.		Pac. Isl.		White		Total			Rates per 100		
	M	F	M	F	M	F	M	F	M	F	M	F	M	F	M	F	All	M	F	Total		
Dropout Counts	9	0	0	0	0	0	1	0	0	0	0	0	0	0	1	0	2	0	2	0.5	0.0	0.3
	10	0	0	0	0	0	0	0	0	0	0	0	0	0	1	1	1	1	2	0.3	0.3	0.3
	11	0	1	0	0	0	1	1	0	0	0	0	0	0	0	0	1	2	3	0.4	0.7	0.5
	12	1	0	0	0	0	1	2	0	0	0	0	0	1	0	3	2	5	1.2	0.8	1.0	
Totals (Grades 9-12)		1	1	0	0	0	3	3	0	0	0	0	0	3	1	7	5	12	0.6	0.4	0.5	
Ethnic Totals		2		0		0	6		0		0		0	4								

Grades	Afr. Am.	Asian	Filipino	Hispanic	Indoch.	Nat. Am.	Pac. Isl.	White	M	F	Total
9-12	0.8	0.0	0.0	0.9	0.0	0.0	0.0	0.3	0.6	0.4	0.5
10-12	1.1	0.0	0.0	1.0	0.0	0.0	0.0	0.3	0.6	0.6	0.6

Grade	Afr. Am.	Asian	Filipino	Hispanic	Indoch.	Nat. Am.	Pac. Isl.	White
9	0.0	0.0	0.0	0.5	0.0	0.0	0.0	0.3
10	0.0	0.0	0.0	0.0	0.0	0.0	0.0	0.7
11	1.7	0.0	0.0	1.5	0.0	0.0	0.0	0.0
12	2.0	0.0	0.0	2.4	0.0	0.0	0.0	0.4

Grades	Afr. Am.	Asian	Filipino	Hispanic	Indoch.	Nat. Am.	Pac. Isl.	White	M	F	Total
9-12	3.6	0.0	0.0	4.3	0.0	0.0	0.0	1.3	2.4	1.8	2.1
10-12	3.6	0.0	0.0	3.8	0.0	0.0	0.0	1.0	1.9	1.8	1.8



San Diego City Schools

2004-2005 Dropout Counts and Rates by Grade Level, Ethnicity, and Gender

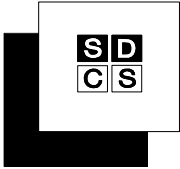
HIGH TECH (339)

Grade	Afr. Am.		Asian		Filipino		Hispanic		Indoch.		Nat. Am.		Pac. Isl.		White		Total			Rates per 100		
	M	F	M	F	M	F	M	F	M	F	M	F	M	F	M	F	M	F	All	M	F	Total
Dropout Counts	9	0	0	0	0	0	0	0	0	0	0	0	0	0	0	0	0	0	0	0.0	0.0	0.0
	10	0	0	0	0	0	0	0	0	0	0	0	0	0	0	0	0	0	0	0.0	0.0	0.0
	11	0	0	0	0	0	0	0	0	0	0	0	0	0	0	0	0	0	0	0.0	0.0	0.0
	12	0	0	0	0	0	0	0	0	0	0	0	0	0	0	0	0	0	0	0.0	0.0	0.0
Totals (Grades 9-12)		0	0	0	0	0	0	0	0	0	0	0	0	0	0	0	0	0	0	0.0	0.0	0.0
Ethnic Totals		0		0		0		0		0		0		0		0						

Grades	Afr. Am.	Asian	Filipino	Hispanic	Indoch.	Nat. Am.	Pac. Isl.	White	Rates per 100		
									M	F	Total
9-12	0.0	0.0	0.0	0.0	0.0	0.0	0.0	0.0	0.0	0.0	0.0
10-12	0.0	0.0	0.0	0.0	0.0	0.0	0.0	0.0	0.0	0.0	0.0

Grade	Afr. Am.	Asian	Filipino	Hispanic	Indoch.	Nat. Am.	Pac. Isl.	White
9	0.0	0.0	0.0	0.0	0.0			0.0
10	0.0	0.0	0.0	0.0	0.0	0.0	0.0	0.0
11	0.0	0.0	0.0	0.0	0.0		0.0	0.0
12	0.0	0.0	0.0	0.0	0.0	0.0		0.0

Grades	Afr. Am.	Asian	Filipino	Hispanic	Indoch.	Nat. Am.	Pac. Isl.	White	Rates per 100		
									M	F	Total
9-12	0.0	0.0	0.0	0.0	0.0	0.0	0.0	0.0	0.0	0.0	0.0
10-12	0.0	0.0	0.0	0.0	0.0	0.0	0.0	0.0	0.0	0.0	0.0



San Diego City Schools

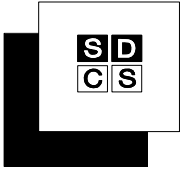
2004-2005 Dropout Counts and Rates by Grade Level, Ethnicity, and Gender

HIGH TECH INTERNATL (785)

Grade	Afr. Am.		Asian		Filipino		Hispanic		Indoch.		Nat. Am.		Pac. Isl.		White		Total		Rates per 100			
	M	F	M	F	M	F	M	F	M	F	M	F	M	F	M	F	All	M	F	Total		
Dropout Counts	9	0	0	0	0	0	1	0	0	0	0	0	0	0	1	0	2	0	2	4.2	0.0	2.1
	10	0	1	0	0	0	0	0	0	0	0	0	0	0	0	0	1	1	0.0	2.3	1.1	
Totals (Grades 9-10)		0	1	0	0	0	1	0	0	0	0	0	0	1	0	2	1	3	2.1	1.1	1.6	
Ethnic Totals		1		0	0	0	1	0	0	0	0	0	0	1								

Rates by Grade

Grades	Afr. Am.	Asian	Filipino	Hispanic	Indoch.	Nat. Am.	Pac. Isl.	White
9	0.0	0.0	0.0	3.7	0.0			2.0
10	7.7	0.0	0.0	0.0	0.0	0.0		0.0



San Diego City Schools

2004-2005 Dropout Counts and Rates by Grade Level, Ethnicity, and Gender

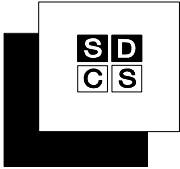
HOOVER (338)

Grade	Afr. Am.		Asian		Filipino		Hispanic		Indoch.		Nat. Am.		Pac. Isl.		White		Total			Rates per 100		
	M	F	M	F	M	F	M	F	M	F	M	F	M	F	M	F	M	F	All	M	F	Total
9	0	1	0	0			10	6	0	0			0	0	0	0	10	7	17	2.2	2.2	2.2
10	1	0	0	0	0		10	8	1	0			0	0	1	0	13	8	21	4.2	2.9	3.6
11	1	0	0	0	0		15	9	0	2			0	0	0	0	16	11	27	7.1	4.9	6.0
12	2	2	0	0	0	1	13	12	3	1	0	1	0	0	1	0	19	17	36	11.4	8.9	10.0
Totals (Grades 9-12)	4	3	0	0	0	1	48	35	4	3	0	1	0	0	2	0	58	43	101	5.0	4.2	4.7
Ethnic Totals	7		0		1		83		7		1		0		2							

Grades	Afr. Am.	Asian	Filipino	Hispanic	Indoch.	Nat. Am.	Pac. Isl.	White	Rates per 100		
									M	F	Total
9-12	2.0	0.0	7.1	5.9	2.6	33.3	0.0	2.1	5.0	4.2	4.7
10-12	2.6	0.0	7.1	7.7	3.6	33.3	0.0	3.2	6.8	5.2	6.0

Grade	Afr. Am.	Asian	Filipino	Hispanic	Indoch.	Nat. Am.	Pac. Isl.	White
9	0.9	0.0		3.0	0.0		0.0	0.0
10	1.0	0.0	0.0	4.8	1.4		0.0	3.6
11	1.6	0.0	0.0	8.5	2.8		0.0	0.0
12	5.9	0.0	14.3	12.3	7.7	33.3	0.0	5.3

Grades	Afr. Am.	Asian	Filipino	Hispanic	Indoch.	Nat. Am.	Pac. Isl.	White	Rates per 100		
									M	F	Total
9-12	9.1	0.0	14.3	25.8	11.6	33.3	0.0	8.6	22.9	17.7	20.3
10-12	8.3	0.0	14.3	23.5	11.6	33.3	0.0	8.6	21.1	15.8	18.5



San Diego City Schools

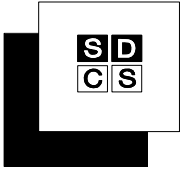
2004-2005 Dropout Counts and Rates by Grade Level, Ethnicity, and Gender

KEARNY CONSTR TECH (736)

Grade	Afr. Am.		Asian		Filipino		Hispanic		Indoch.		Nat. Am.		Pac. Isl.		White		Total			Rates per 100		
	M	F	M	F	M	F	M	F	M	F	M	F	M	F	M	F	M	F	All	M	F	Total
Dropout Counts	9	0	0			0	0	0	0	0	0	0			0	0	0	0	0	0.0	0.0	0.0
	10	0	0	0	0	0	0	0	0	0					0	0	0	0	0.0	0.0	0.0	
	11	0	0	0	0	0	1	0	0	0	0	0	0	0	0	0	1	0	1.4	0.0	1.1	
Totals (Grades 9-11)		0	0	0	0	0	1	0	0	0	0	0	0	0	0	0	1	0	0.5	0.0	0.4	
Ethnic Totals		0		0		0	1		0		0		0		0							

Rates by Grade

Grades	Afr. Am.	Asian	Filipino	Hispanic	Indoch.	Nat. Am.	Pac. Isl.	White
9	0.0		0.0	0.0	0.0	0.0		0.0
10	0.0	0.0	0.0	0.0	0.0			0.0
11	0.0	0.0	0.0	2.6	0.0	0.0	0.0	0.0



San Diego City Schools

2004-2005 Dropout Counts and Rates by Grade Level, Ethnicity, and Gender

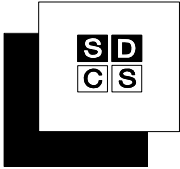
KEARNY DIGITAL MEDIA (733)

Grade	Afr. Am.		Asian		Filipino		Hispanic		Indoch.		Nat. Am.		Pac. Isl.		White		Total			Rates per 100		
	M	F	M	F	M	F	M	F	M	F	M	F	M	F	M	F	All	M	F	Total		
Dropout Counts	9	0	1	0	0	0	1	0	0	0	0	0	0	0	1	0	2	1	3	2.9	1.9	2.4
	10	0	0	0	0	0	0	0	0	0	0	0	0	0	0	0	0	0	0	0.0	0.0	0.0
	11	0	0	0	0	0	0	0	0	0	0	0	0	0	0	0	0	0	0.0	0.0	0.0	
	12	0	0	0	0	0	2	0	1	0	0	0	0	0	0	0	3	0	3	4.2	0.0	2.7
Totals (Grades 9-12)		0	1	0	0	0	3	0	1	0	0	0	0	0	1	0	5	1	6	2.0	0.5	1.4
Ethnic Totals		1		0		0	3		1		0		0		1							

Grades	Afr. Am.	Asian	Filipino	Hispanic	Indoch.	Nat. Am.	Pac. Isl.	White	M	F	Total
9-12	1.1	0.0	0.0	2.1	1.4	0.0	0.0	1.3	2.0	0.5	1.4
10-12	0.0	0.0	0.0	2.2	1.7	0.0	0.0	0.0	1.7	0.0	1.0

Grade	Afr. Am.	Asian	Filipino	Hispanic	Indoch.	Nat. Am.	Pac. Isl.	White
9	4.8	0.0	0.0	1.9	0.0	0.0	0.0	4.3
10	0.0	0.0	0.0	0.0	0.0	0.0		0.0
11	0.0	0.0	0.0	0.0	0.0			0.0
12	0.0	0.0	0.0	5.9	5.3	0.0	0.0	0.0

Grades	Afr. Am.	Asian	Filipino	Hispanic	Indoch.	Nat. Am.	Pac. Isl.	White	M	F	Total
9-12	4.8	0.0	0.0	7.7	5.3	0.0	0.0	4.3	7.0	1.9	5.1
10-12	0.0	0.0	0.0	5.9	5.3	0.0	0.0	0.0	4.2	0.0	2.7



San Diego City Schools

2004-2005 Dropout Counts and Rates by Grade Level, Ethnicity, and Gender

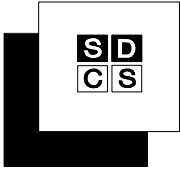
KEARNY INTL BUSINESS (735)

Grade	Afr. Am.		Asian		Filipino		Hispanic		Indoch.		Nat. Am.		Pac. Isl.		White		Total			Rates per 100		
	M	F	M	F	M	F	M	F	M	F	M	F	M	F	M	F	M	F	All	M	F	Total
Dropout Counts	9	0	2	0	0	0	0	1	0	1					1	0	2	4	6	4.8	4.8	4.8
	10	0	0	0	0	0	0	0	0	0			0		0	0	0	0	0	0.0	0.0	0.0
	11	0	0	0	0	0	0	1	0	0	0	0	0	0	0	0	1	1	1	0.0	2.0	1.1
	12	0	0	0	0	0	1	0	0	0			0	0	0	1	1	2	2.2	1.7	1.9	
Totals (Grades 9-12)		0	2	0	0	0	0	2	0	1	0	0	1	0	1	1	3	6	9	1.6	2.4	2.1
Ethnic Totals		2		0		0		3		1		0		1		2						

Grades	Afr. Am.	Asian	Filipino	Hispanic	Indoch.	Nat. Am.	Pac. Isl.	White	Rates per 100		
									M	F	Total
9-12	2.5	0.0	0.0	1.8	1.3	0.0	25.0	3.4	1.6	2.4	2.1
10-12	0.0	0.0	0.0	1.8	0.0	0.0	0.0	2.1	0.7	1.2	1.0

Grade	Afr. Am.	Asian	Filipino	Hispanic	Indoch.	Nat. Am.	Pac. Isl.	White
9	10.0	0.0	0.0	1.7	4.0			9.1
10	0.0	0.0	0.0	0.0	0.0		0.0	0.0
11	0.0	0.0	0.0	2.9	0.0	0.0	0.0	0.0
12	0.0	0.0	0.0	3.0	0.0		0.0	5.9

Grades	Afr. Am.	Asian	Filipino	Hispanic	Indoch.	Nat. Am.	Pac. Isl.	White	Rates per 100		
									M	F	Total
9-12	10.0	0.0	0.0	7.5	4.0	0.0	0.0	14.4	6.8	8.3	7.6
10-12	0.0	0.0	0.0	5.9	0.0	0.0	0.0	5.9	2.2	3.7	3.0



San Diego City Schools

2004-2005 Dropout Counts and Rates by Grade Level, Ethnicity, and Gender

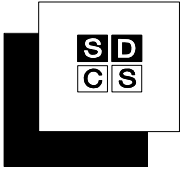
KEARNY SCI CONN TECH (734)

Grade	Afr. Am.		Asian		Filipino		Hispanic		Indoch.		Nat. Am.		Pac. Isl.		White		Total		Rates per 100			
	M	F	M	F	M	F	M	F	M	F	M	F	M	F	M	F	M	F	All	M	F	Total
Dropout Counts	9	0	0	0	0	0	0	0	0	0	0	0	0	0	0	0	0	0	0	0.0	0.0	0.0
	10	0	0	0	0	0	0	0	0	0	0	0	0	0	0	0	0	0	0	0.0	0.0	0.0
	11	0	0	0	0	0	0	0	0	0	0	0	0	0	0	0	0	0	0	0.0	0.0	0.0
	12	0	0	0	0	0	0	0	0	0	0	0	0	0	0	0	0	0	0	0.0	0.0	0.0
Totals (Grades 9-12)		0	0	0	0	0	0	0	0	0	0	0	0	0	0	0	0	0	0	0.0	0.0	0.0
Ethnic Totals		0		0		0		0		0		0		0		0						

Grades	Afr. Am.	Asian	Filipino	Hispanic	Indoch.	Nat. Am.	Pac. Isl.	White	M	F	Total
9-12	0.0	0.0	0.0	0.0	0.0	0.0	0.0	0.0	0.0	0.0	0.0
10-12	0.0	0.0	0.0	0.0	0.0	0.0	0.0	0.0	0.0	0.0	0.0

Grade	Afr. Am.	Asian	Filipino	Hispanic	Indoch.	Nat. Am.	Pac. Isl.	White
9	0.0	0.0	0.0	0.0	0.0	0.0	0.0	0.0
10	0.0	0.0	0.0	0.0	0.0	0.0	0.0	0.0
11	0.0	0.0	0.0	0.0	0.0	0.0	0.0	0.0
12	0.0	0.0	0.0	0.0	0.0	0.0	0.0	0.0

Grades	Afr. Am.	Asian	Filipino	Hispanic	Indoch.	Nat. Am.	Pac. Isl.	White	M	F	Total
9-12	0.0	0.0	0.0	0.0	0.0	0.0	0.0	0.0	0.0	0.0	0.0
10-12	0.0	0.0	0.0	0.0	0.0	0.0	0.0	0.0	0.0	0.0	0.0



San Diego City Schools

2004-2005 Dropout Counts and Rates by Grade Level, Ethnicity, and Gender

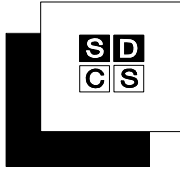
LA JOLLA (342)

Grade	Afr. Am.		Asian		Filipino		Hispanic		Indoch.		Nat. Am.		Pac. Isl.		White		Total			Rates per 100		
	M	F	M	F	M	F	M	F	M	F	M	F	M	F	M	F	M	F	All	M	F	Total
Dropout Counts	9	0	0	0	0	0	0	0	0	0	0	0	0	0	0	0	0	0	0	0.0	0.0	0.0
	10	0	0	0	0	0	1	0	0	0			0	1	0	2	0	2	0.9	0.0	0.4	
	11	0	0	0	0	0	1	0	0	0	0		0	0	0	1	0	1	0.5	0.0	0.2	
	12	0	0	0	0	0	3	1	0	0	0	0	0	0	0	3	1	4	1.6	0.6	1.1	
Totals (Grades 9-12)		0	0	0	0	0	5	1	0	0	0	0	0	0	1	6	1	7	0.7	0.1	0.4	
Ethnic Totals		0		0		0	6		0		0		0	1								

Grades	Afr. Am.	Asian	Filipino	Hispanic	Indoch.	Nat. Am.	Pac. Isl.	White	M	F	Total
9-12	0.0	0.0	0.0	1.5	0.0	0.0	0.0	0.1	0.7	0.1	0.4
10-12	0.0	0.0	0.0	2.1	0.0	0.0	0.0	0.1	1.0	0.2	0.6

Grade	Afr. Am.	Asian	Filipino	Hispanic	Indoch.	Nat. Am.	Pac. Isl.	White
9	0.0	0.0	0.0	0.0	0.0	0.0		0.0
10	0.0	0.0	0.0	0.8	0.0		0.0	0.4
11	0.0	0.0	0.0	1.1	0.0	0.0	0.0	0.0
12	0.0	0.0	0.0	5.1	0.0	0.0	0.0	0.0

Grades	Afr. Am.	Asian	Filipino	Hispanic	Indoch.	Nat. Am.	Pac. Isl.	White	M	F	Total
9-12	0.0	0.0	0.0	6.9	0.0	0.0	0.0	0.4	2.9	0.6	1.8
10-12	0.0	0.0	0.0	6.9	0.0	0.0	0.0	0.4	2.9	0.6	1.8



San Diego City Schools

2004-2005 Dropout Counts and Rates by Grade Level, Ethnicity, and Gender

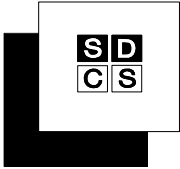
MADISON (346)

Grade	Afr. Am.		Asian		Filipino		Hispanic		Indoch.		Nat. Am.		Pac. Isl.		White		Total			Rates per 100		
	M	F	M	F	M	F	M	F	M	F	M	F	M	F	M	F	All	M	F	Total		
Dropout Counts	9	0	0	0	0	0	2	0	0	0	0	0	0	0	1	0	3	0	3	1.4	0.0	0.7
	10	0	0	0	0	0	0	2	0	0	0	0	0	0	0	0	0	2	2	0.0	1.0	0.5
	11	0	1	0	0	0	0	4	0	0	0	0	0	0	0	0	5	5	0.0	2.9	1.3	
	12	1	0	0	1	0	0	0	3	2	1	0	0	0	0	4	5	7	12	3.4	4.2	3.8
Totals (Grades 9-12)		1	1	0	1	0	0	5	8	1	0	0	0	0	1	4	8	14	22	1.1	1.9	1.5
Ethnic Totals		2		1		0		13		1		0		5								

Grades	Afr. Am.	Asian	Filipino	Hispanic	Indoch.	Nat. Am.	Pac. Isl.	White	Rates per 100		
									M	F	Total
9-12	1.0	2.0	0.0	2.0	1.1	0.0	0.0	1.1	1.1	1.9	1.5
10-12	1.3	2.4	0.0	2.5	1.5	0.0	0.0	1.2	0.9	2.5	1.7

Grade	Afr. Am.	Asian	Filipino	Hispanic	Indoch.	Nat. Am.	Pac. Isl.	White
9	0.0	0.0	0.0	1.0	0.0	0.0	0.0	0.9
10	0.0	0.0	0.0	1.1	0.0	0.0	0.0	0.0
11	1.7	0.0	0.0	2.6	0.0	0.0	0.0	0.0
12	2.9	6.3	0.0	4.6	4.2	0.0	0.0	3.7

Grades	Afr. Am.	Asian	Filipino	Hispanic	Indoch.	Nat. Am.	Pac. Isl.	White	Rates per 100		
									M	F	Total
9-12	4.5	6.3	0.0	9.0	4.2	0.0	0.0	4.6	4.8	7.9	6.3
10-12	4.5	6.3	0.0	8.1	4.2	0.0	0.0	3.7	3.4	7.9	5.6



San Diego City Schools

2004-2005 Dropout Counts and Rates by Grade Level, Ethnicity, and Gender

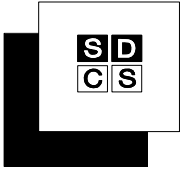
MIRA MESA (349)

Grade	Afr. Am.		Asian		Filipino		Hispanic		Indoch.		Nat. Am.		Pac. Isl.		White		Total			Rates per 100			
	M	F	M	F	M	F	M	F	M	F	M	F	M	F	M	F	M	F	All	M	F	Total	
Dropout Counts	9	0	0	0	0	0	0	0	0	0	0	0	0	0	0	1	0	1	0	1	0.3	0.0	0.1
	10	1	0	0	0	0	1	0	0	1	0	0	0	0	0	0	0	2	1	3	0.5	0.3	0.4
	11	0	0	0	0	0	0	1	0	0	0	0	0	0	1	0	1	1	2	0.3	0.3	0.3	
	12	0	0	1	0	0	0	0	0	0	0	1	0	3	1	5	1	6	1.8	0.4	1.1		
Totals (Grades 9-12)		1	0	1	0	0	0	1	1	0	0	1	0	5	1	9	3	12	0.7	0.2	0.5		
Ethnic Totals		1		1		0		2		1		0		1		6							

Grades	Afr. Am.	Asian	Filipino	Hispanic	Indoch.	Nat. Am.	Pac. Isl.	White	Rates per 100		
									M	F	Total
9-12	0.4	0.7	0.0	0.6	0.3	0.0	2.6	0.9	0.7	0.2	0.5
10-12	0.5	1.0	0.0	0.9	0.4	0.0	3.3	1.1	0.8	0.3	0.6

Grade	Afr. Am.	Asian	Filipino	Hispanic	Indoch.	Nat. Am.	Pac. Isl.	White
9	0.0	0.0	0.0	0.0	0.0	0.0	0.0	0.6
10	1.3	0.0	0.0	1.0	1.0	0.0	0.0	0.0
11	0.0	0.0	0.0	1.2	0.0	0.0	0.0	0.7
12	0.0	3.4	0.0	0.0	0.0	0.0	16.7	3.0

Grades	Afr. Am.	Asian	Filipino	Hispanic	Indoch.	Nat. Am.	Pac. Isl.	White	Rates per 100		
									M	F	Total
9-12	1.3	3.4	0.0	2.2	1.0	0.0	16.7	4.2	2.9	1.0	2.0
10-12	1.3	3.4	0.0	2.2	1.0	0.0	16.7	3.6	2.6	1.0	1.9



San Diego City Schools

2004-2005 Dropout Counts and Rates by Grade Level, Ethnicity, and Gender

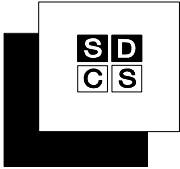
MISSION BAY (350)

Grade	Afr. Am.		Asian		Filipino		Hispanic		Indoch.		Nat. Am.		Pac. Isl.		White		Total			Rates per 100		
	M	F	M	F	M	F	M	F	M	F	M	F	M	F	M	F	M	F	All	M	F	Total
Dropout Counts	9	0	0	0	0	0	1	1	0	0	0	0	0	0	1	1	2	2	4	0.8	0.8	0.8
	10	1	2	0	0	0	3	0	0	0	0	0	0	1	2	5	4	9	2.2	1.8	2.0	
	11	3	0	0	0	1	5	2	0	0	0	0	0	0	1	9	3	12	4.7	1.6	3.2	
	12	1	1	0	0	0	6	2	0	0	0	0	0	2	4	9	7	16	5.8	3.9	4.8	
Totals (Grades 9-12)		5	3	0	0	1	15	5	0	0	0	0	0	4	8	25	16	41	3.0	1.9	2.5	
Ethnic Totals		8		0		1		20		0		0		12								

Grades	Afr. Am.	Asian	Filipino	Hispanic	Indoch.	Nat. Am.	Pac. Isl.	White	Rates per 100		
									M	F	Total
9-12	2.8	0.0	7.1	2.5	0.0	0.0	0.0	3.1	3.0	1.9	2.5
10-12	3.8	0.0	11.1	3.3	0.0	0.0	0.0	3.5	4.0	2.4	3.2

Grade	Afr. Am.	Asian	Filipino	Hispanic	Indoch.	Nat. Am.	Pac. Isl.	White
9	0.0	0.0	0.0	0.8	0.0	0.0	0.0	1.9
10	3.5	0.0	0.0	1.3	0.0	0.0	0.0	2.7
11	5.7	0.0	25.0	3.9	0.0	0.0	0.0	1.1
12	2.8	0.0	0.0	5.6	0.0	0.0	0.0	7.6

Grades	Afr. Am.	Asian	Filipino	Hispanic	Indoch.	Nat. Am.	Pac. Isl.	White	Rates per 100		
									M	F	Total
9-12	11.6	0.0	25.0	11.2	0.0	0.0	0.0	12.7	12.9	7.9	10.4
10-12	11.6	0.0	25.0	10.5	0.0	0.0	0.0	11.0	12.1	7.2	9.7



San Diego City Schools

2004-2005 Dropout Counts and Rates by Grade Level, Ethnicity, and Gender

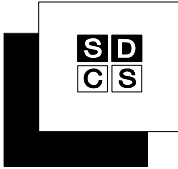
MORSE (352)

Grade	Afr. Am.		Asian		Filipino		Hispanic		Indoch.		Nat. Am.		Pac. Isl.		White		Total			Rates per 100		
	M	F	M	F	M	F	M	F	M	F	M	F	M	F	M	F	M	F	All	M	F	Total
Dropout Counts	9	1	0	0	0	3	4	3	0	0	0	0	0	0	2	0	15	7	22	6.1	3.0	4.6
	10	1	0		2	4	4	3	0	0	1	0	0	0	2	0	15	8	23	3.5	2.0	2.8
	11	1	0	0	3	2	3	2	1	0	0	0	0	1	1	10	6	16	2.0	1.5	1.8	
	12	3	1	0	5	1	3	1	1	0	1	0	1	0	0	0	11	5	16	3.1	1.5	2.3
Totals (Grades 9-12)	17	6	1	0	10	10	14	9	2	0	1	0	1	0	5	1	51	26	77	3.4	1.9	2.7
Ethnic Totals	23		1		20		23		2		1		1		6							

Grades	Afr. Am.	Asian	Filipino	Hispanic	Indoch.	Nat. Am.	Pac. Isl.	White	M	F	Total
9-12	3.9	6.3	1.7	2.8	1.9	16.7	1.4	4.3	3.4	1.9	2.7
10-12	2.9	7.1	1.7	2.5	2.2	20.0	1.6	3.3	2.8	1.7	2.3

Grade	Afr. Am.	Asian	Filipino	Hispanic	Indoch.	Nat. Am.	Pac. Isl.	White
9	7.8	0.0	2.2	4.2	0.0	0.0	0.0	11.8
10	3.9	0.0	2.0	3.0	0.0	33.3	0.0	4.8
11	1.9	0.0	1.3	1.9	2.9	0.0	0.0	4.8
12	2.6	20.0	1.8	2.6	3.7		6.3	0.0

Grades	Afr. Am.	Asian	Filipino	Hispanic	Indoch.	Nat. Am.	Pac. Isl.	White	M	F	Total
9-12	15.3	20.0	7.1	11.3	6.5	33.3	6.3	20.0	14.1	7.7	11.0
10-12	8.2	20.0	5.0	7.3	6.5	33.3	6.3	9.3	8.4	4.9	6.7



San Diego City Schools

2004-2005 Dropout Counts and Rates by Grade Level, Ethnicity, and Gender

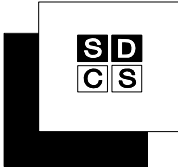
POINT LOMA (354)

Grade	Afr. Am.		Asian		Filipino		Hispanic		Indoch.		Nat. Am.		Pac. Isl.		White		Total		Rates per 100			
	M	F	M	F	M	F	M	F	M	F	M	F	M	F	M	F	All	M	F	Total		
Dropout Counts	9	1	0	0	0	0	3	2	0	0	0	0	0	0	2	4	6	6	12	1.8	2.0	1.9
	10	0	0	0	0	0	0	1	0	0	0	0	0	0	1	0	2	2	0.0	0.8	0.4	
	11	1	0	0	0	0	2	1	0	0	0	0	0	4	2	7	3	10	3.2	1.3	2.2	
	12	0	0	0	0	0	3	2	0	0	0	0	0	3	0	6	2	8	2.6	1.0	1.8	
Totals (Grades 9-12)		2	0	0	0	0	8	6	0	0	0	0	0	9	7	19	13	32	1.8	1.3	1.6	
Ethnic Totals		2		0		0	14		0		0		0	16								

Grades	Afr. Am.	Asian	Filipino	Hispanic	Indoch.	Nat. Am.	Pac. Isl.	White	Rates per 100		
									M	F	Total
9-12	1.5	0.0	0.0	1.7	0.0	0.0	0.0	1.7	1.8	1.3	1.6
10-12	1.3	0.0	0.0	1.7	0.0	0.0	0.0	1.4	1.9	1.0	1.5

Grade	Afr. Am.	Asian	Filipino	Hispanic	Indoch.	Nat. Am.	Pac. Isl.	White
9	1.9	0.0	0.0	1.6	0.0	0.0	0.0	2.4
10	0.0	0.0	0.0	0.5	0.0	0.0	0.0	0.4
11	3.7	0.0	0.0	1.8	0.0	0.0	0.0	2.7
12	0.0	0.0	0.0	3.2	0.0	0.0	0.0	1.3

Grades	Afr. Am.	Asian	Filipino	Hispanic	Indoch.	Nat. Am.	Pac. Isl.	White	Rates per 100		
									M	F	Total
9-12	5.5	0.0	0.0	7.0	0.0	0.0	0.0	6.6	7.4	5.0	6.2
10-12	3.7	0.0	0.0	5.4	0.0	0.0	0.0	4.3	5.7	3.0	4.4



San Diego City Schools

2004-2005 Dropout Counts and Rates by Grade Level, Ethnicity, and Gender

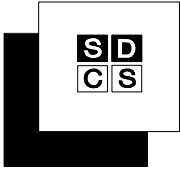
SD BUSINESS (749)

Grade	Afr. Am.		Asian		Filipino		Hispanic		Indoch.		Nat. Am.		Pac. Isl.		White		Total			Rates per 100		
	M	F	M	F	M	F	M	F	M	F	M	F	M	F	M	F	M	F	All	M	F	Total
Dropout Counts	9	3	0	0	0	0	1	4	0	0	0	0	0	0	1	1	5	5	10	9.3	10.2	9.7
	10	2	0	0	0	0	6	0	0	0	0	0	0	0	0	8	0	8	8.9	0.0	4.9	
	11	0	0	0	0	0	1	5	1	0	0	0	0	0	0	2	5	7	3.4	8.8	6.0	
	12	0	0	0	0	0	0	0	0	0	0	0	0	0	0	0	0	0	0.0	0.0	0.0	
Totals (Grades 9-12)		5	0	0	0	0	8	9	1	0	0	0	0	1	1	15	10	25	6.6	4.5	5.6	
Ethnic Totals		5	0	0	0	0	17	9	1	0	0	0	0	2	1							

Grades	Afr. Am.	Asian	Filipino	Hispanic	Indoch.	Nat. Am.	Pac. Isl.	White	Rates per 100		
									M	F	Total
9-12	5.9	0.0	0.0	5.4	33.3		0.0	5.4	6.6	4.5	5.6
10-12	2.9	0.0	0.0	5.0	50.0		0.0	0.0	5.8	2.9	4.3

Grade	Afr. Am.	Asian	Filipino	Hispanic	Indoch.	Nat. Am.	Pac. Isl.	White
9	17.6	0.0	0.0	6.8	0.0			28.6
10	6.3	0.0		5.0				0.0
11	0.0		0.0	7.8	100.0		0.0	0.0
12	0.0	0.0		0.0	0.0			0.0

Grades	Afr. Am.	Asian	Filipino	Hispanic	Indoch.	Nat. Am.	Pac. Isl.	White	Rates per 100		
									M	F	Total
9-12	22.8	0.0	0.0	18.3	100.0		0.0	28.6	20.1	18.1	19.3
10-12	6.3	0.0	0.0	12.4	100.0		0.0	0.0	12.0	8.8	10.6



San Diego City Schools

2004-2005 Dropout Counts and Rates by Grade Level, Ethnicity, and Gender

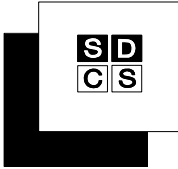
SD CIMA (746)

Grade	Afr. Am.		Asian		Filipino		Hispanic		Indoch.		Nat. Am.		Pac. Isl.		White		Total			Rates per 100		
	M	F	M	F	M	F	M	F	M	F	M	F	M	F	M	F	All	M	F	Total		
9	0	0					5	0	0	0			0	1	5	1	6	7.7	1.6	4.7		
10	0	0			0		2	4					0	0	2	4	6	2.2	4.9	3.5		
11	0	0					1	0					0		1	0	1	1.6	0.0	0.9		
12	0						2	0					0		2	0	2	9.5	0.0	4.0		
Totals (Grades 9-12)	0	0			0		10	4	0	0			0	1	10	5	15	4.2	2.2	3.2		
Ethnic Totals	0				0		14		0				1									

Grades	Afr. Am.	Asian	Filipino	Hispanic	Indoch.	Nat. Am.	Pac. Isl.	White	M	F	Total
9-12	0.0		0.0	3.2	0.0			11.1	4.2	2.2	3.2
10-12	0.0		0.0	2.8				0.0	2.9	2.5	2.7

Grade	Afr. Am.	Asian	Filipino	Hispanic	Indoch.	Nat. Am.	Pac. Isl.	White
9	0.0			4.3	0.0			25.0
10	0.0		0.0	3.7				0.0
11	0.0			0.9				0.0
12	0.0			4.2				0.0

Grades	Afr. Am.	Asian	Filipino	Hispanic	Indoch.	Nat. Am.	Pac. Isl.	White	M	F	Total
9-12	0.0		0.0	12.5	0.0			25.0	19.7	6.4	12.5
10-12	0.0		0.0	8.5				0.0	13.0	4.9	8.2



San Diego City Schools

2004-2005 Dropout Counts and Rates by Grade Level, Ethnicity, and Gender

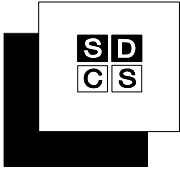
SD INTL STUDIES (744)

Grade	Afr. Am.		Asian		Filipino		Hispanic		Indoch.		Nat. Am.		Pac. Isl.		White		Total			Rates per 100		
	M	F	M	F	M	F	M	F	M	F	M	F	M	F	M	F	M	F	All	M	F	Total
Dropout Counts	9	0	0	0	0	0	2	1	0	0	0	0	0	0	0	0	2	1	3	3.8	1.1	2.1
	10	0	0	0	0	0	0	0	0	0	0	0	0	0	1	0	1	0	1	1.8	0.0	0.7
	11	1	0	0	0	1	0	0	0	0	0	0	0	0	0	0	2	0	2	4.8	0.0	1.9
	12	0	0	0	0	0	0	0	0	0	0	0	0	0	0	1	0	1	0.0	1.7	1.1	
Totals (Grades 9-12)		1	0	0	0	3	1	0	0	0	0	0	0	0	1	1	5	2	7	2.7	0.7	1.5
Ethnic Totals		1		0		0	4		0		0		0		2							

Grades	Afr. Am.	Asian	Filipino	Hispanic	Indoch.	Nat. Am.	Pac. Isl.	White	Rates per 100		
									M	F	Total
9-12	1.1	0.0	0.0	2.3	0.0	0.0	0.0	1.2	2.7	0.7	1.5
10-12	1.8	0.0	0.0	0.7	0.0	0.0	0.0	1.8	2.2	0.5	1.2

Grade	Afr. Am.	Asian	Filipino	Hispanic	Indoch.	Nat. Am.	Pac. Isl.	White
9	0.0	0.0	0.0	7.5	0.0	0.0	0.0	0.0
10	0.0	0.0	0.0	0.0	0.0	0.0	0.0	2.4
11	7.1	0.0	0.0	2.2	0.0	0.0	0.0	0.0
12	0.0	0.0	0.0	0.0	0.0	0.0	0.0	2.6

Grades	Afr. Am.	Asian	Filipino	Hispanic	Indoch.	Nat. Am.	Pac. Isl.	White	Rates per 100		
									M	F	Total
9-12	7.1	0.0	0.0	9.6	0.0	0.0	0.0	4.9	10.0	2.8	5.7
10-12	7.1	0.0	0.0	2.2	0.0	0.0	0.0	4.9	6.5	1.7	3.6



San Diego City Schools

2004-2005 Dropout Counts and Rates by Grade Level, Ethnicity, and Gender

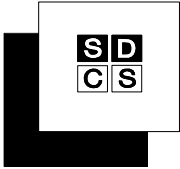
SD LEADS (745)

Grade	Afr. Am.		Asian		Filipino		Hispanic		Indoch.		Nat. Am.		Pac. Isl.		White		Total			Rates per 100		
	M	F	M	F	M	F	M	F	M	F	M	F	M	F	M	F	All	M	F	Total		
Dropout Counts	9	0	0			0	1	2			0				0	0	1	2	3	2.4	3.8	3.2
	10	0	0		0		1	4							0	0	1	4	5	1.8	4.0	3.2
	11	0	0		0	0	1	0							1	0	2	0	2	4.4	0.0	1.4
	12	0	1		0	0	1	0							0	0	1	1	2	2.7	2.2	2.4
Totals (Grades 9-12)		0	1		0	0	4	6			0				1	0	5	7	12	2.8	2.4	2.5
Ethnic Totals		1		0		0	10				0				1							

Grades	Afr. Am.	Asian	Filipino	Hispanic	Indoch.	Nat. Am.	Pac. Isl.	White	Rates per 100		
									M	F	Total
9-12	1.3	0.0	0.0	2.7		0.0		4.0	2.8	2.4	2.5
10-12	1.6	0.0	0.0	2.4				4.8	2.9	2.0	2.3

Grade	Afr. Am.	Asian	Filipino	Hispanic	Indoch.	Nat. Am.	Pac. Isl.	White
9	0.0		0.0	4.1		0.0		0.0
10	0.0	0.0		4.1				0.0
11	0.0	0.0	0.0	0.9				12.5
12	6.3		0.0	1.6				0.0

Grades	Afr. Am.	Asian	Filipino	Hispanic	Indoch.	Nat. Am.	Pac. Isl.	White	Rates per 100		
									M	F	Total
9-12	6.3	0.0	0.0	10.3		0.0		12.5	10.8	9.7	9.8
10-12	6.3	0.0	0.0	6.5				12.5	8.7	6.1	6.8



San Diego City Schools

2004-2005 Dropout Counts and Rates by Grade Level, Ethnicity, and Gender

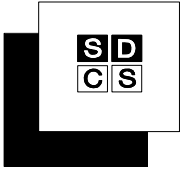
SD MEDIA VIS PRF ART (750)

Grade	Afr. Am.		Asian		Filipino		Hispanic		Indoch.		Nat. Am.		Pac. Isl.		White		Total			Rates per 100		
	M	F	M	F	M	F	M	F	M	F	M	F	M	F	M	F	All	M	F	Total		
9	0	1					2	1		0					0	1	2	3	5	3.0	3.7	3.4
10	0	0		0	0		5	1			0	0			0	0	5	1	6	7.8	1.2	4.1
11	0	0					4	1	0		0				0	0	4	1	5	7.1	1.5	4.1
12	0	0					0	1							0	0	0	1	1	0.0	2.8	1.8
Totals (Grades 9-12)	0	1		0	0		11	4	0	0	0	0			0	1	11	6	17	5.3	2.3	3.6
Ethnic Totals	1		0		0		15		0		0				1							

Grades	Afr. Am.	Asian	Filipino	Hispanic	Indoch.	Nat. Am.	Pac. Isl.	White	M	F	Total
9-12	1.4	0.0	0.0	4.3	0.0	0.0		2.4	5.3	2.3	3.6
10-12	0.0	0.0	0.0	4.9	0.0	0.0		0.0	6.4	1.6	3.7

Grade	Afr. Am.	Asian	Filipino	Hispanic	Indoch.	Nat. Am.	Pac. Isl.	White
9	4.2			2.8	0.0			6.3
10	0.0	0.0	0.0	5.9		0.0		0.0
11	0.0			5.0	0.0	0.0		0.0
12	0.0			2.4				0.0

Grades	Afr. Am.	Asian	Filipino	Hispanic	Indoch.	Nat. Am.	Pac. Isl.	White	M	F	Total
9-12	4.2	0.0	0.0	15.2	0.0	0.0		6.3	17.0	8.9	12.8
10-12	0.0	0.0	0.0	12.8	0.0	0.0		0.0	14.4	5.4	9.7



San Diego City Schools

2004-2005 Dropout Counts and Rates by Grade Level, Ethnicity, and Gender

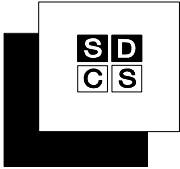
SD SCIENCE TECHNOL (753)

Grade	Afr. Am.		Asian		Filipino		Hispanic		Indoch.		Nat. Am.		Pac. Isl.		White		Total			Rates per 100		
	M	F	M	F	M	F	M	F	M	F	M	F	M	F	M	F	M	F	All	M	F	Total
Dropout Counts	9	0	0	0	0	0	4	1	0	0	0	0	0	0	0	0	4	1	5	3.9	2.2	3.4
	10	0	0	0	0	0	2	1	0	0	0	0	0	0	0	2	1	3	1.7	2.3	1.9	
	11	0	0	0	0	0	7	0	0	0	0	0	0	0	0	7	0	7	8.8	0.0	6.2	
	12	1	0	0	0	0	4	0	0	0	0	0	0	0	0	5	0	5	12.2	0.0	7.9	
Totals (Grades 9-12)		1	0	0	0	0	17	2	0	0	0	0	0	0	0	18	2	20	5.3	1.4	4.1	
Ethnic Totals		1		0		0	19		0		0		0		0							

Grades	Afr. Am.	Asian	Filipino	Hispanic	Indoch.	Nat. Am.	Pac. Isl.	White	Rates per 100		
									M	F	Total
9-12	1.4	0.0	0.0	5.4	0.0	0.0	0.0	0.0	5.3	1.4	4.1
10-12	2.0	0.0	0.0	5.6	0.0	0.0	0.0	0.0	5.9	1.0	4.5

Grade	Afr. Am.	Asian	Filipino	Hispanic	Indoch.	Nat. Am.	Pac. Isl.	White
9	0.0	0.0	0.0	4.9	0.0	0.0	0.0	0.0
10	0.0	0.0	0.0	2.4	0.0	0.0	0.0	0.0
11	0.0	0.0	0.0	8.4	0.0	0.0	0.0	0.0
12	10.0	0.0	0.0	9.1	0.0	0.0	0.0	0.0

Grades	Afr. Am.	Asian	Filipino	Hispanic	Indoch.	Nat. Am.	Pac. Isl.	White	Rates per 100		
									M	F	Total
9-12	10.0	0.0	0.0	22.7	0.0	0.0	0.0	0.0	24.3	4.4	18.1
10-12	10.0	0.0	0.0	18.8	0.0	0.0	0.0	0.0	21.2	2.3	15.2



San Diego City Schools

2004-2005 Dropout Counts and Rates by Grade Level, Ethnicity, and Gender

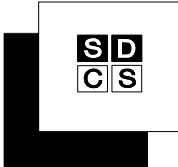
SCRIPPS RANCH (359)

Grade	Afr. Am.		Asian		Filipino		Hispanic		Indoch.		Nat. Am.		Pac. Isl.		White		Total			Rates per 100			
	M	F	M	F	M	F	M	F	M	F	M	F	M	F	M	F	M	F	All	M	F	Total	
Dropout Counts	9	0	2	0	0	0	2	1	0	0	0	0	4	5	6	8	14			2.0	2.5	2.3	
	10	1	0	2	0	0	1	1	1	0	0	0	1	1	6	2	8			2.0	0.6	1.3	
	11	0	0	1	0	1	0	1	0	0	0	0	1	0	2	2	4			0.7	0.7	0.7	
	12	0	0	0	0	0	1	3	2	0	0	0	4	1	7	4	11			2.9	1.5	2.2	
Totals (Grades 9-12)		1	2	3	0	1	4	6	3	0	0	0	10	7	21	16	37			1.9	1.3	1.6	
Ethnic Totals		3		3		1		10		3		0		0		17							

Grades	Afr. Am.	Asian	Filipino	Hispanic	Indoch.	Nat. Am.	Pac. Isl.	White	Rates per 100		
									M	F	Total
9-12	1.5	1.5	0.6	2.9	1.5	0.0	0.0	1.4	1.9	1.3	1.6
10-12	0.7	2.1	0.8	2.9	2.1	0.0	0.0	0.9	1.8	0.9	1.3

Grade	Afr. Am.	Asian	Filipino	Hispanic	Indoch.	Nat. Am.	Pac. Isl.	White
9	3.5	0.0	0.0	2.9	0.0	0.0	0.0	2.9
10	1.4	4.1	0.0	1.7	1.8	0.0	0.0	0.7
11	0.0	1.8	2.7	1.4	0.0	0.0	0.0	0.3
12	0.0	0.0	0.0	7.4	4.8	0.0	0.0	1.7

Grades	Afr. Am.	Asian	Filipino	Hispanic	Indoch.	Nat. Am.	Pac. Isl.	White	Rates per 100		
									M	F	Total
9-12	4.9	5.8	2.7	12.9	6.5	0.0	0.0	5.5	7.4	5.2	6.2
10-12	1.4	5.8	2.7	10.3	6.5	0.0	0.0	2.7	5.5	2.7	4.1



San Diego City Schools

2004-2005 Dropout Counts and Rates by Grade Level, Ethnicity, and Gender

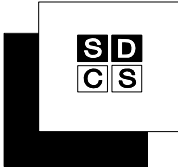
SERRA (357)

Grade	Afr. Am.		Asian		Filipino		Hispanic		Indoch.		Nat. Am.		Pac. Isl.		White		Total			Rates per 100			
	M	F	M	F	M	F	M	F	M	F	M	F	M	F	M	F	M	F	All	M	F	Total	
Dropout Counts	9	0	0	0	0	0	4	0	0	0	0	0	0	0	0	2	4	2	6	1.2	0.7	0.9	
	10	0	1	0	0	0	0	2	0	1		0	0	1	0	1	5	6	0.4	1.7	1.1		
	11	0	0	0	0	0	0	0	0	0	0	0	1	0	1	0	2	0	2	0.9	0.0	0.5	
	12	1	1	0	0	0	0	0	0	0	0	0	0	0	1	1	1	2	3	0.6	1.0	0.9	
Totals (Grades 9-12)		1	2	0	0	0	4	2	0	1	0	0	1	1	2	3	8	9	17	0.8	0.9	0.9	
Ethnic Totals		3		0		0		6		1		0		2		5							

Grades	Afr. Am.	Asian	Filipino	Hispanic	Indoch.	Nat. Am.	Pac. Isl.	White	Rates per 100		
									M	F	Total
9-12	0.9	0.0	0.0	0.9	0.7	0.0	6.3	0.8	0.8	0.9	0.9
10-12	1.2	0.0	0.0	0.5	0.9	0.0	9.5	0.7	0.6	1.0	0.8

Grade	Afr. Am.	Asian	Filipino	Hispanic	Indoch.	Nat. Am.	Pac. Isl.	White
9	0.0	0.0	0.0	1.7	0.0	0.0	0.0	1.0
10	1.1	0.0	0.0	1.0	2.0	0.0	20.0	0.6
11	0.0	0.0	0.0	0.0	0.0	0.0	11.1	0.7
12	2.8	0.0	0.0	0.0	0.0	0.0	0.0	0.9

Grades	Afr. Am.	Asian	Filipino	Hispanic	Indoch.	Nat. Am.	Pac. Isl.	White	Rates per 100		
									M	F	Total
9-12	3.9	0.0	0.0	2.7	2.0	0.0	28.9	3.1	3.1	3.4	3.3
10-12	3.9	0.0	0.0	1.0	2.0	0.0	28.9	2.1	1.9	2.8	2.4



San Diego City Schools

2004-2005 Dropout Counts and Rates by Grade Level, Ethnicity, and Gender

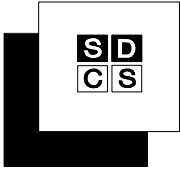
UNIVERSITY CITY (355)

Grade	Afr. Am.		Asian		Filipino		Hispanic		Indoch.		Nat. Am.		Pac. Isl.		White		Total		Rates per 100			
	M	F	M	F	M	F	M	F	M	F	M	F	M	F	M	F	All	M	F	Total		
Dropout Counts	9	0	0	0	0	0	0	0	0	0	0	0	0	0	4	0	4	4	0.0	1.6	0.8	
	10	0	0	0	0	0	1	0	0	0	0	0	0	0	0	0	1	0	1	0.4	0.0	0.2
	11	1	0	0	0	1	0	0	0	0	0	0	0	0	0	0	2	0	2	0.9	0.0	0.4
	12	0	0	0	0	1	0	0	0	0	0	0	0	0	1	0	2	0	2	0.9	0.0	0.5
Totals (Grades 9-12)		1	0	0	0	2	0	1	0	0	0	0	0	0	1	4	5	4	9	0.5	0.4	0.5
Ethnic Totals		1		0		2		1		0		0		0	5							

Grades	Afr. Am.	Asian	Filipino	Hispanic	Indoch.	Nat. Am.	Pac. Isl.	White	M	F	Total
9-12	0.5	0.0	0.9	0.2	0.0	0.0	0.0	0.6	0.5	0.4	0.5
10-12	0.7	0.0	1.1	0.3	0.0	0.0	0.0	0.2	0.7	0.0	0.4

Grade	Afr. Am.	Asian	Filipino	Hispanic	Indoch.	Nat. Am.	Pac. Isl.	White
9	0.0	0.0	0.0	0.0	0.0	0.0	0.0	1.9
10	0.0	0.0	0.0	0.8	0.0	0.0	0.0	0.0
11	2.7	0.0	1.4	0.0	0.0	0.0	0.0	0.0
12	0.0	0.0	1.6	0.0	0.0	0.0	0.0	0.5

Grades	Afr. Am.	Asian	Filipino	Hispanic	Indoch.	Nat. Am.	Pac. Isl.	White	M	F	Total
9-12	2.7	0.0	3.0	0.8	0.0	0.0	0.0	2.4	2.2	1.6	1.9
10-12	2.7	0.0	3.0	0.8	0.0	0.0	0.0	0.5	2.2	0.0	1.1



San Diego City Schools

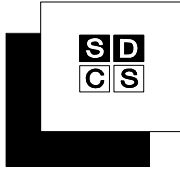
2004-2005 Dropout Counts and Rates by Grade Level, Ethnicity, and Gender

SD METRO CAREER TECH (500)

Grade	Afr. Am.		Asian		Filipino		Hispanic		Indoch.		Nat. Am.		Pac. Isl.		White		Total		Rates per 100			
	M	F	M	F	M	F	M	F	M	F	M	F	M	F	M	F	All	M	F	Total		
Dropout Counts	0	1		0	0	0	0	0					0	0	0	0	0	1	1	0.0	2.1	1.4
Totals (Grade 9)	0	1		0	0	0	0	0					0	0	0	0	1	1	0.0	2.1	1.4	
Ethnic Totals	1		0		0		0		0				0		0							

Rates by Grade

Grades	Afr. Am.	Asian	Filipino	Hispanic	Indoch.	Nat. Am.	Pac. Isl.	White
9	4.3	0.0	0.0	0.0	0.0		0.0	0.0



San Diego City Schools

2004-2005 Dropout Counts and Rates by Grade Level, Ethnicity, and Gender

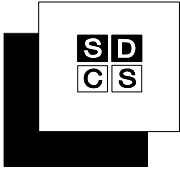
GOMPERS (335)

Grade	Afr. Am.		Asian		Filipino		Hispanic		Indoch.		Nat. Am.		Pac. Isl.		White		Total			Rates per 100			
	M	F	M	F	M	F	M	F	M	F	M	F	M	F	M	F	M	F	All	M	F	Total	
Dropout Counts	7	5	10	0	1	0	11	12	3	1			0	0	1	0	20	24	44	15.4	17.6	16.5	
	8	8	5	0	0	0	0	6	5	0	1			0	1	14	12	26	7.3	8.3	7.7		
	9	9	8		0	1	12	7	1	1		0	2	0	1	2	26	18	44	14.7	11.2	13.0	
	10	3	2		0		11	4	0	1			0	0	0	14	7	21	10.2	4.8	7.4		
	11	1	1	0		0	7	5	1	0			0	0	0	9	6	15	12.2	6.3	8.8		
	12	1	0				5	3	2	0			0	0	0	8	3	11	17.4	4.8	10.1		
Totals (Grades 7-12)		27	26	0	1	1	0	52	36	7	4		0	2	0	2	3	91	70	161	12.0	9.4	10.7
Ethnic Totals		53		1		1		88		11		0		2		5							

Grades	Afr. Am.	Asian	Filipino	Hispanic	Indoch.	Nat. Am.	Pac. Isl.	White	Rates per 100		
									M	F	Total
7-12	12.2	14.3	12.5	10.1	8.9	0.0	7.7	15.6	12.0	9.4	10.7
8-12	10.4	0.0	16.7	9.1	7.2	0.0	9.5	14.3	11.3	7.5	9.5
9-12	9.5	0.0	25.0	10.2	8.7	0.0	14.3	17.6	13.1	7.3	10.1
10-12	4.9	0.0	0.0	10.8	7.4		0.0	0.0	12.1	5.3	8.4

Grade	Afr. Am.	Asian	Filipino	Hispanic	Indoch.	Nat. Am.	Pac. Isl.	White
7	22.1	100.0	0.0	14.4	15.4		0.0	25.0
8	12.5	0.0	0.0	6.0	3.6		0.0	9.1
9	17.0	0.0	100.0	9.3	13.3	0.0	40.0	27.3
10	7.0	0.0	0.0	8.5	4.0		0.0	0.0
11	3.6	0.0	0.0	13.2	5.9		0.0	0.0
12	2.9			14.0	16.7		0.0	0.0

Grades	Afr. Am.	Asian	Filipino	Hispanic	Indoch.	Nat. Am.	Pac. Isl.	White	M	F	Total
9-12	27.7	0.0	100.0	38.1	34.7	0.0	40.0	27.3	44.4	24.5	34.0
10-12	12.9	0.0	0.0	31.7	24.7		0.0	0.0	34.9	15.0	24.1



San Diego City Schools

2004-2005 Dropout Counts and Rates by Grade Level, Ethnicity, and Gender

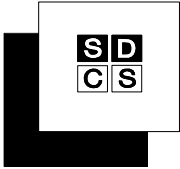
LEARNING CHOICE ACAD (018)

Grade	Afr. Am.		Asian		Filipino		Hispanic		Indoch.		Nat. Am.		Pac. Isl.		White		Total		Rates per 100			
	M	F	M	F	M	F	M	F	M	F	M	F	M	F	M	F	All	M	F	Total		
Dropout Counts	7	0	0			0	0	0	0						1	0	1	0	1	5.9	0.0	3.0
	8		0				1	0							0	0	1	0	1	6.7	0.0	2.9
	9	0	0				1	1			0				0	1	1	2	3	8.3	11.8	10.3
	10		0				0	0							0	1	0	1	1	0.0	8.3	4.8
	11		0				0	0			0				0	0	0	0	0	0.0	0.0	0.0
	12															0	0	0			0.0	0.0
Totals (Grades 7-12)		0	0			0	2	1			0				1	2	3	3	6	4.9	4.1	4.5
Ethnic Totals		0			0		3			0				3								

Grades	Afr. Am.	Asian	Filipino	Hispanic	Indoch.	Nat. Am.	Pac. Isl.	White	M	F	Total
7-12	0.0		0.0	7.7		0.0		3.7	4.9	4.1	4.5
8-12	0.0			10.7		0.0		3.1	4.5	5.3	5.0
9-12	0.0			11.1		0.0		4.7	3.4	7.9	6.0
10-12	0.0			0.0		0.0		4.0	0.0	4.8	2.6

Grade	Afr. Am.	Asian	Filipino	Hispanic	Indoch.	Nat. Am.	Pac. Isl.	White
7	0.0		0.0	0.0				5.6
8	0.0			10.0				0.0
9	0.0			25.0		0.0		5.6
10	0.0			0.0				7.1
11	0.0			0.0		0.0		0.0
12								0.0

Grades	Afr. Am.	Asian	Filipino	Hispanic	Indoch.	Nat. Am.	Pac. Isl.	White	M	F	Total
9-12	0.0			25.0		0.0		12.3	8.3	19.1	14.6
10-12	0.0			0.0		0.0		7.1	0.0	8.3	4.8



San Diego City Schools

2004-2005 Dropout Counts and Rates by Grade Level, Ethnicity, and Gender

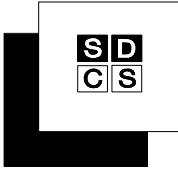
MT. EVEREST (395)

Grade	Afr. Am.		Asian		Filipino		Hispanic		Indoch.		Nat. Am.		Pac. Isl.		White		Total		Rates per 100				
	M	F	M	F	M	F	M	F	M	F	M	F	M	F	M	F	M	F	All	M	F	Total	
Dropout Counts	7	0	0			0	0	0	0			0	0	0	0	0	0	0	0	0	0.0	0.0	0.0
	8		0				0	0			0				0	0	0	0	0	0.0	0.0	0.0	
	9		0		0		0								0	0	0	0	0	0.0	0.0	0.0	
	10		0		0		0								0	0	0	0	0	0.0	0.0	0.0	
	11		0					0							0	0	0	0	0	0.0	0.0	0.0	
	12							0							0	0	0	0	0	0.0	0.0	0.0	
Totals (Grades 7-12)		0	0		0	0	0	0			0		0		0	0	0	0	0	0.0	0.0	0.0	
Ethnic Totals		0		0		0		0			0		0		0								

Grades	Afr. Am.	Asian	Filipino	Hispanic	Indoch.	Nat. Am.	Pac. Isl.	White	Rates per 100		
									M	F	Total
7-12	0.0	0.0	0.0	0.0		0.0	0.0	0.0	0.0	0.0	0.0
8-12	0.0	0.0	0.0	0.0		0.0		0.0	0.0	0.0	0.0
9-12	0.0	0.0	0.0	0.0				0.0	0.0	0.0	0.0
10-12	0.0	0.0	0.0	0.0				0.0	0.0	0.0	0.0

Grade	Afr. Am.	Asian	Filipino	Hispanic	Indoch.	Nat. Am.	Pac. Isl.	White
7	0.0		0.0	0.0			0.0	0.0
8	0.0			0.0		0.0		0.0
9	0.0		0.0	0.0				0.0
10	0.0	0.0	0.0	0.0				0.0
11	0.0			0.0				0.0
12				0.0				0.0

Grades	Afr. Am.	Asian	Filipino	Hispanic	Indoch.	Nat. Am.	Pac. Isl.	White	M	F	Total
9-12	0.0	0.0	0.0	0.0				0.0	0.0	0.0	0.0
10-12	0.0	0.0	0.0	0.0				0.0	0.0	0.0	0.0



San Diego City Schools

2004-2005 Dropout Counts and Rates by Grade Level, Ethnicity, and Gender

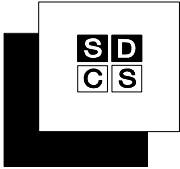
MUIR (369)

Grade	Afr. Am.		Asian		Filipino		Hispanic		Indoch.		Nat. Am.		Pac. Isl.		White		Total		Rates per 100			
	M	F	M	F	M	F	M	F	M	F	M	F	M	F	M	F	M	F	All	M	F	Total
Dropout Counts	7	0	0			0		0	0	0				0	0	0	0	0	0	0.0	0.0	0.0
	8	0	0				0	0		0	0				0	0	1	0	1	3.8	0.0	2.3
	9	0	0				0	0					0	0	0	0	0	0	0	0.0	0.0	0.0
	10	0	0	0	0		0	1						0	0	0	1	1	1	0.0	6.7	4.2
	11	0	0			0	0	0						0	0	0	0	0	0	0.0	0.0	0.0
	12	0	0			0	0	0		0				0	0	0	0	0	0	0.0	0.0	0.0
Totals (Grades 7-12)		0	0	0	0	0	0	1	1	0	0	0	0	0	0	0	1	1	2	1.1	1.3	1.2
Ethnic Totals		0		0		0		1		1		0		0		0						

Grades	Afr. Am.	Asian	Filipino	Hispanic	Indoch.	Nat. Am.	Pac. Isl.	White	Rates per 100		
									M	F	Total
7-12	0.0	0.0	0.0	1.1	25.0	0.0	0.0	0.0	1.1	1.3	1.2
8-12	0.0	0.0	0.0	1.4	33.3	0.0	0.0	0.0	1.3	1.6	1.4
9-12	0.0	0.0	0.0	2.1	0.0		0.0	0.0	0.0	2.2	1.1
10-12	0.0	0.0	0.0	2.9	0.0			0.0	0.0	3.0	1.5

Grade	Afr. Am.	Asian	Filipino	Hispanic	Indoch.	Nat. Am.	Pac. Isl.	White
7	0.0		0.0	0.0	0.0		0.0	0.0
8	0.0		0.0	0.0	50.0	0.0		0.0
9	0.0			0.0			0.0	0.0
10	0.0	0.0		8.3				0.0
11	0.0		0.0	0.0				0.0
12	0.0		0.0	0.0	0.0			0.0

Grades	Afr. Am.	Asian	Filipino	Hispanic	Indoch.	Nat. Am.	Pac. Isl.	White	M	F	Total
9-12	0.0	0.0	0.0	8.3	0.0		0.0	0.0	0.0	6.7	4.2
10-12	0.0	0.0	0.0	8.3	0.0			0.0	0.0	6.7	4.2



San Diego City Schools

2004-2005 Dropout Counts and Rates by Grade Level, Ethnicity, and Gender

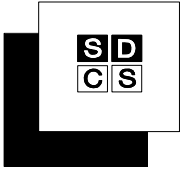
PREUSS SCHOOL UCSD (348)

Grade	Afr. Am.		Asian		Filipino		Hispanic		Indoch.		Nat. Am.		Pac. Isl.		White		Total		Rates per 100			
	M	F	M	F	M	F	M	F	M	F	M	F	M	F	M	F	M	F	All	M	F	Total
Dropout Counts	7	0	0	0	0	0	0	0	0	0			0	0	0	0	0	0	0	0.0	0.0	0.0
	8	0	0	0	0	0	0	0	0	0			0	0	0	0	0	0	0	0.0	0.0	0.0
	9	0	0	0	0	0	0	0	0	0			0	0	0	0	0	0	0	0.0	0.0	0.0
	10	0	0	0	0	0	0	0	0	0			0	0	0	0	0	0	0	0.0	0.0	0.0
	11	0	0	0	0	0	0	0	0	0			0	0	0	0	0	0	0	0.0	0.0	0.0
	12	0	0	0	0	0	0	0	0	0			0	0	0	0	0	0	0	0.0	0.0	0.0
Totals (Grades 7-12)		0	0	0	0	0	0	0	0	0			0	0	0	0	0	0	0	0.0	0.0	0.0
Ethnic Totals		0		0		0		0		0			0		0		0					

Grades	Afr. Am.	Asian	Filipino	Hispanic	Indoch.	Nat. Am.	Pac. Isl.	White	M	F	Total
7-12	0.0	0.0	0.0	0.0	0.0		0.0	0.0	0.0	0.0	0.0
8-12	0.0	0.0	0.0	0.0	0.0		0.0	0.0	0.0	0.0	0.0
9-12	0.0	0.0	0.0	0.0	0.0		0.0	0.0	0.0	0.0	0.0
10-12	0.0	0.0	0.0	0.0	0.0		0.0	0.0	0.0	0.0	0.0

Grade	Afr. Am.	Asian	Filipino	Hispanic	Indoch.	Nat. Am.	Pac. Isl.	White
7	0.0	0.0	0.0	0.0	0.0			0.0
8	0.0	0.0	0.0	0.0	0.0			0.0
9	0.0	0.0	0.0	0.0	0.0			0.0
10	0.0	0.0	0.0	0.0	0.0			0.0
11	0.0	0.0	0.0	0.0	0.0			0.0
12	0.0	0.0	0.0	0.0	0.0		0.0	0.0

Grades	Afr. Am.	Asian	Filipino	Hispanic	Indoch.	Nat. Am.	Pac. Isl.	White	M	F	Total
9-12	0.0	0.0	0.0	0.0	0.0		0.0	0.0	0.0	0.0	0.0
10-12	0.0	0.0	0.0	0.0	0.0		0.0	0.0	0.0	0.0	0.0



San Diego City Schools

2004-2005 Dropout Counts and Rates by Grade Level, Ethnicity, and Gender

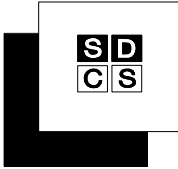
S.C.P.A. (368)

Grade	Afr. Am.		Asian		Filipino		Hispanic		Indoch.		Nat. Am.		Pac. Isl.		White		Total			Rates per 100			
	M	F	M	F	M	F	M	F	M	F	M	F	M	F	M	F	M	F	All	M	F	Total	
Dropout Counts	7	0	0	0	0	0	0	0	0	0	0	0	0	0	0	0	0	0	0	0	0.0	0.0	0.0
	8	0	0	0	0	0	0	0	0	0	0	0	0	0	0	0	0	0	0	0.0	0.0	0.0	
	9	0	0	0	0	0	0	0	0	0	0	0	0	0	0	0	0	0	0	0.0	0.0	0.0	
	10	0	0	0	0	0	0	0	0	0	0	0	0	0	0	0	0	0	0	0.0	0.0	0.0	
	11	0	1	0	0	0	0	0	0	0	0	0	0	0	0	0	0	1	1	0.0	0.7	0.5	
	12	0	4	0	0	0	0	1	0	0	0	0	0	0	0	0	1	4	5	1.4	3.8	2.8	
Totals (Grades 7-12)		0	5	0	0	0	0	1	0	0	0	0	0	0	0	0	1	5	6	0.2	0.6	0.4	
Ethnic Totals		5		0		0		1		0		0		0		0							

Grades	Afr. Am.	Asian	Filipino	Hispanic	Indoch.	Nat. Am.	Pac. Isl.	White	Rates per 100		
									M	F	Total
7-12	1.4	0.0	0.0	0.3	0.0	0.0	0.0	0.0	0.2	0.6	0.4
8-12	1.7	0.0	0.0	0.4	0.0	0.0	0.0	0.0	0.2	0.7	0.5
9-12	2.2	0.0	0.0	0.5	0.0	0.0	0.0	0.0	0.3	0.9	0.7
10-12	3.0	0.0	0.0	0.7	0.0	0.0	0.0	0.0	0.4	1.3	1.0

Grade	Afr. Am.	Asian	Filipino	Hispanic	Indoch.	Nat. Am.	Pac. Isl.	White
7	0.0	0.0	0.0	0.0	0.0	0.0	0.0	0.0
8	0.0	0.0	0.0	0.0	0.0	0.0	0.0	0.0
9	0.0	0.0	0.0	0.0	0.0	0.0	0.0	0.0
10	0.0	0.0	0.0	0.0	0.0	0.0	0.0	0.0
11	1.8	0.0	0.0	0.0	0.0	0.0	0.0	0.0
12	7.7	0.0	0.0	2.9	0.0	0.0	0.0	0.0

Grades	Afr. Am.	Asian	Filipino	Hispanic	Indoch.	Nat. Am.	Pac. Isl.	White	M	F	Total
9-12	9.4	0.0	0.0	2.9	0.0	0.0	0.0	0.0	1.4	4.4	3.2
10-12	9.4	0.0	0.0	2.9	0.0	0.0	0.0	0.0	1.4	4.4	3.2



San Diego City Schools

2004-2005 Dropout Counts and Rates by Grade Level, Ethnicity, and Gender

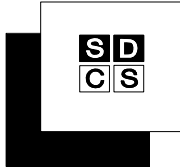
AUDEO (008)

Grade	Afr. Am.		Asian		Filipino		Hispanic		Indoch.		Nat. Am.		Pac. Isl.		White		Total			Rates per 100		
	M	F	M	F	M	F	M	F	M	F	M	F	M	F	M	F	M	F	All	M	F	Total
Dropout Counts	7	0		0			0				0				0	0	0	0	0	0.0	0.0	0.0
	8	0	0				0	0		0					0	0	0	0	0	0.0	0.0	0.0
	9	0	0	0		0	0	0	0						0	0	0	0	0	0.0	0.0	0.0
	10	0		0	0		0	0				0			0	1	0	1	1	0.0	5.0	2.8
	11	0	0			0	0	1							0	1	0	2	2	0.0	14.3	6.9
	12	3	0			0	2	1		0	0	0	2	0	2	3	9	4	13	29.0	22.2	26.5
Totals (Grades 7-12)		3	0	0	0	0	2	2	0	0	0	0	2	0	2	5	9	7	16	9.7	7.9	8.8
Ethnic Totals		3		0		0	4		0		0		2		7							

Grades	Afr. Am.	Asian	Filipino	Hispanic	Indoch.	Nat. Am.	Pac. Isl.	White	Rates per 100		
									M	F	Total
7-12	10.3	0.0	0.0	7.4	0.0	0.0	100.0	8.6	9.7	7.9	8.8
8-12	11.1	0.0	0.0	7.8	0.0	0.0	100.0	9.5	10.7	8.3	9.5
9-12	13.0	0.0	0.0	8.9	0.0	0.0	100.0	11.5	12.3	10.0	11.2
10-12	15.0	0.0	0.0	12.1	0.0	0.0	100.0	13.7	14.5	13.5	14.0

Grade	Afr. Am.	Asian	Filipino	Hispanic	Indoch.	Nat. Am.	Pac. Isl.	White
7	0.0	0.0		0.0		0.0		0.0
8	0.0	0.0		0.0	0.0			0.0
9	0.0	0.0	0.0	0.0	0.0			0.0
10	0.0	0.0		0.0		0.0		5.9
11	0.0		0.0	11.1				7.7
12	30.0		0.0	25.0	0.0	0.0	100.0	23.8

Grades	Afr. Am.	Asian	Filipino	Hispanic	Indoch.	Nat. Am.	Pac. Isl.	White	M	F	Total
9-12	30.0	0.0	0.0	33.3	0.0	0.0	100.0	33.8	29.0	36.7	33.5
10-12	30.0	0.0	0.0	33.3	0.0	0.0	100.0	33.8	29.0	36.7	33.5



San Diego City Schools

2004-2005 Dropout Counts and Rates by Grade Level, Ethnicity, and Gender

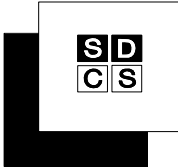
A.L.B.A. (331)

Grade	Afr. Am.		Asian		Filipino		Hispanic		Indoch.		Nat. Am.		Pac. Isl.		White		Total		Rates per 100		
	M	F	M	F	M	F	M	F	M	F	M	F	M	F	M	F	All	M	F	Total	
Dropout Counts	7	3			0		3	0							6	0	6	42.9	0.0	35.3	
	8	2	2			0	1	0						0	4	2	6	20.0	33.3	23.1	
	9	0	0		0		1	3						1	2	3	5	10.5	42.9	19.2	
	10	5	2				2	0	0			0			7	2	9	100.0	28.6	64.3	
	11	0	1				0	0	0						0	1	1	0.0	20.0	8.3	
	12	0	0				0	0	0					1	1	0	1	11.1	0.0	9.1	
Totals (Grades 7-12)		10	5			0	7	3	0			0		2	20	8	28	26.3	26.7	26.4	
Ethnic Totals		15				0	10		0			0		2							

Grades	Afr. Am.	Asian	Filipino	Hispanic	Indoch.	Nat. Am.	Pac. Isl.	White	Rates per 100		
									M	F	Total
7-12	60.0		0.0	15.6	0.0		0.0	28.6	26.3	26.7	26.4
8-12	54.5		0.0	13.7	0.0		0.0	28.6	22.6	29.6	24.7
9-12	44.4		0.0	19.4	0.0		0.0	33.3	23.8	28.6	25.4
10-12	66.7			11.8	0.0		0.0	50.0	34.8	21.4	29.7

Grade	Afr. Am.	Asian	Filipino	Hispanic	Indoch.	Nat. Am.	Pac. Isl.	White
7	100.0		0.0	23.1				
8	100.0		0.0	5.0				0.0
9	0.0		0.0	28.6				25.0
10	140.0			33.3	0.0		0.0	0.0
11	20.0			0.0	0.0			
12	0.0			0.0	0.0			100.0

Grades	Afr. Am.	Asian	Filipino	Hispanic	Indoch.	Nat. Am.	Pac. Isl.	White	Rates per 100		
									M	F	Total
9-12	132.0		0.0	52.4	0.0		0.0	100.0	100.0	67.3	76.0
10-12	132.0			33.3	0.0		0.0	100.0	100.0	42.9	70.2



San Diego City Schools

2004-2005 Dropout Counts and Rates by Grade Level, Ethnicity, and Gender

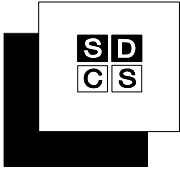
CHARTER SCHOOL OF SD (366)

Grade	Afr. Am.		Asian		Filipino		Hispanic		Indoch.		Nat. Am.		Pac. Isl.		White		Total		Rates per 100				
	M	F	M	F	M	F	M	F	M	F	M	F	M	F	M	F	M	F	All	M	F	Total	
Dropout Counts	7	0	0	0	0	0	0	0	0	0	0	0	0	0	0	0	0	0	0	0.0	0.0	0.0	
	8	0	0	0	0	0	0	0	0	0	0	0	0	0	0	0	0	0	0	0.0	0.0	0.0	
	9	1	3	0	0	1	1	8	6	0	0	0	0	0	0	5	1	15	11	26	12.1	7.5	9.6
	10	2	1	0	0	0	0	0	3	0	0	0	0	0	0	1	1	2	5	7	1.9	4.8	3.4
	11	4	3	0	1	1	3	9	11	2	0	1	0	1	1	11	8	29	27	56	11.7	9.2	10.4
	12	5	2	0	1	0	2	18	9	1	0	0	1	0	0	9	9	34	24	58	19.1	14.5	16.9
Totals (Grades 7-12)		12	9	0	2	2	6	35	29	3	0	1	1	1	1	26	19	80	67	147	11.3	8.8	10.0
Ethnic Totals		21		2		8		64		3		2		2		45							

Grades	Afr. Am.	Asian	Filipino	Hispanic	Indoch.	Nat. Am.	Pac. Isl.	White	Rates per 100		
									M	F	Total
7-12	8.8	5.9	12.3	12.2	12.5	12.5	7.7	8.2	11.3	8.8	10.0
8-12	9.3	6.3	12.5	12.4	12.5	13.3	7.7	8.5	11.6	9.0	10.2
9-12	10.0	7.1	12.5	12.9	12.5	15.4	8.7	8.9	12.2	9.5	10.8
10-12	10.5	9.5	11.1	12.8	17.6	22.2	11.8	9.3	12.3	10.0	11.1

Grade	Afr. Am.	Asian	Filipino	Hispanic	Indoch.	Nat. Am.	Pac. Isl.	White
7	0.0	0.0	0.0	0.0		0.0		0.0
8	0.0	0.0		0.0		0.0	0.0	0.0
9	8.5	0.0	20.0	13.5	0.0	0.0	0.0	7.1
10	9.1	0.0	0.0	4.2	0.0	0.0	0.0	1.2
11	8.2	14.3	15.4	9.3	33.3	33.3	25.0	10.1
12	15.9	12.5	10.0	25.7	11.1	25.0	0.0	12.8

Grades	Afr. Am.	Asian	Filipino	Hispanic	Indoch.	Nat. Am.	Pac. Isl.	White	Rates per 100		
									M	F	Total
9-12	35.8	25.0	39.1	44.1	40.7	50.0	25.0	28.0	38.4	31.7	34.9
10-12	29.8	25.0	23.8	35.4	40.7	50.0	25.0	22.5	29.9	26.1	28.0



San Diego City Schools

2004-2005 Dropout Counts and Rates by Grade Level, Ethnicity, and Gender

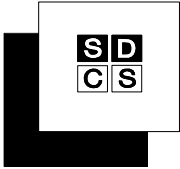
CONNECTIONS (333)

Grade	Afr. Am.		Asian		Filipino		Hispanic		Indoch.		Nat. Am.		Pac. Isl.		White		Total		Rates per 100			
	M	F	M	F	M	F	M	F	M	F	M	F	M	F	M	F	M	F	All	M	F	Total
Dropout Counts	7	0	0					0									0	0	0	0.0	0.0	0.0
	8	0					0	3									0	3	3	0.0	75.0	50.0
	9	2	1		0		14	12	2							1	19	15	34	90.5	57.7	72.3
	10	5	3				14	17	0						2	20	23	43	50.0	69.7	58.9	
	11	1	0				6	11		0					2	9	12	21	36.0	60.0	46.7	
	12	1	1				3	5								4	6	10	40.0	66.7	52.6	
Totals (Grades 7-12)		9	5		0		37	48	2	2					4	52	59	111	52.5	61.5	56.9	
Ethnic Totals		14			2		85		4					6								

Grades	Afr. Am.	Asian	Filipino	Hispanic	Indoch.	Nat. Am.	Pac. Isl.	White	Rates per 100		
									M	F	Total
7-12	35.9		200.0	59.9	100.0			66.7	52.5	61.5	56.9
8-12	38.9		200.0	60.7	100.0			66.7	53.1	64.1	58.4
9-12	40.0		200.0	60.7	100.0			66.7	54.2	63.6	58.7
10-12	42.3			56.0	0.0			55.6	44.0	66.1	54.0

Grade	Afr. Am.	Asian	Filipino	Hispanic	Indoch.	Nat. Am.	Pac. Isl.	White
7	0.0			0.0				
8	0.0			60.0				
9	33.3		0.0	74.3	200.0			
10	44.4			59.6	0.0			150.0
11	20.0			48.6	0.0			50.0
12	66.7			61.5				0.0

Grades	Afr. Am.	Asian	Filipino	Hispanic	Indoch.	Nat. Am.	Pac. Isl.	White	Rates per 100		
									M	F	Total
9-12	90.1		0.0	97.9	200.0			125.0	98.2	98.3	97.1
10-12	85.2			92.0	0.0			125.0	80.8	96.0	89.6



San Diego City Schools

2004-2005 Dropout Counts and Rates by Grade Level, Ethnicity, and Gender

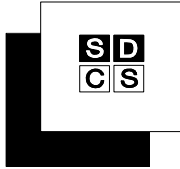
GARFIELD (361)

Grade	Afr. Am.		Asian		Filipino		Hispanic		Indoch.		Nat. Am.		Pac. Isl.		White		Total			Rates per 100			
	M	F	M	F	M	F	M	F	M	F	M	F	M	F	M	F	M	F	All	M	F	Total	
Dropout Counts	7	0	0	0	0	0	0	0	0	0	0	0	0	0	0	0	0	0	0	0	0.0	0.0	0.0
	8		0															0	0			0.0	0.0
	9	0	3				0	1			0		0		0		1	4	5	5.6	13.3	10.4	
	10	2	0	0	0		1	0		0	0		0		2	0	5	0	5	7.5	0.0	3.4	
	11	1	1				3	1	0						1	2	5	4	9	6.5	4.3	5.3	
	12	0	7				1	2		0				2	2	3	11	14	7.0	19.6	14.1		
Totals (Grades 7-12)		3	11	0	0	0	5	4	0	0	0	0	1	0	5	4	14	19	33	6.8	7.3	7.1	
Ethnic Totals		14		0	0	0	9		0		0		1		9								

Grades	Afr. Am.	Asian	Filipino	Hispanic	Indoch.	Nat. Am.	Pac. Isl.	White	Rates per 100		
									M	F	Total
7-12	0.0	0.0	0.0	0.0	0.0	0.0	0.0	0.0	0.0	0.0	0.0
8-12	17.3	0.0	0.0	3.0	0.0	0.0	25.0	14.5	6.8	7.3	7.1
9-12	17.5	0.0	0.0	3.0	0.0	0.0	25.0	14.5	6.8	7.3	7.1
10-12	15.7	0.0	0.0	3.0	0.0	0.0	0.0	15.5	7.0	6.6	6.7

Grade	Afr. Am.	Asian	Filipino	Hispanic	Indoch.	Nat. Am.	Pac. Isl.	White
7	0.0	0.0	0.0	0.0	0.0	0.0	0.0	0.0
8	0.0							
9	30.0			3.1		0.0	100.0	0.0
10	7.7	0.0	0.0	1.0	0.0	0.0	0.0	15.4
11	7.7		0.0	3.3	0.0			16.7
12	38.9		0.0	6.0	0.0			14.8

Grades	Afr. Am.	Asian	Filipino	Hispanic	Indoch.	Nat. Am.	Pac. Isl.	White	Rates per 100		
									M	F	Total
9-12	63.6	0.0	0.0	12.9	0.0	0.0	100.0	39.9	24.0	33.4	29.6
10-12	47.9	0.0	0.0	10.1	0.0	0.0	0.0	39.9	19.5	23.1	21.5



San Diego City Schools

2004-2005 Dropout Counts and Rates by Grade Level, Ethnicity, and Gender

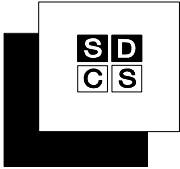
TWAIN (362)

Grade	Afr. Am.		Asian		Filipino		Hispanic		Indoch.		Nat. Am.		Pac. Isl.		White		Total		Rates per 100				
	M	F	M	F	M	F	M	F	M	F	M	F	M	F	M	F	M	F	All	M	F	Total	
Dropout Counts																							
7							0										0		0	0	0.0		0.0
8							0										0		0	0	0.0		0.0
9	2	2			0		2 3		0		0				1 3		5 8		13	11.9	23.5	17.1	
10	1	1	0			5 7		0						0 1		6 10		16	11.5	17.9	14.8		
11	0	3			0 0		2 3		0 0				0		1 0		3 6		9	7.3	11.3	9.6	
12	0	1	0			1 0		0 5		1		0		0		2 0		4 6		10	13.8	14.6	14.3
Totals (Grades 7-12)	3	7	0	1	1	9	18	1	0	0	0	0	0	4	4	18	30	48	11.0	16.1	13.7		
Ethnic Totals	10		0		2		27		1		0		0		8								

Grades	Afr. Am.	Asian	Filipino	Hispanic	Indoch.	Nat. Am.	Pac. Isl.	White	Rates per 100		
									M	F	Total
7-12	20.4	0.0	14.3	15.3	7.7	0.0	0.0	8.9	11.0	16.1	13.7
8-12	20.4	0.0	14.3	15.4	7.7	0.0	0.0	8.9	11.0	16.2	13.8
9-12	20.4	0.0	14.3	15.5	7.7	0.0	0.0	8.9	11.0	16.3	13.8
10-12	14.6	0.0	18.2	16.4	9.1	0.0	0.0	5.8	10.7	14.7	12.9

Grade	Afr. Am.	Asian	Filipino	Hispanic	Indoch.	Nat. Am.	Pac. Isl.	White
7	0.0							
8	0.0							
9	50.0		0.0	12.5	0.0	0.0		19.0
10	9.1	0.0	33.3	22.2	0.0			4.0
11	25.0		0.0	9.8	0.0		0.0	5.0
12	14.3	0.0	33.3	17.2	25.0	0.0	0.0	8.3

Grades	Afr. Am.	Asian	Filipino	Hispanic	Indoch.	Nat. Am.	Pac. Isl.	White	Rates per 100		
									M	F	Total
9-12	70.8	0.0	55.6	49.2	25.0	0.0	0.0	32.3	37.7	52.4	45.3
10-12	41.6	0.0	55.6	41.9	25.0	0.0	0.0	16.4	29.3	37.8	34.0



San Diego City Schools

2004-2005 Dropout Counts and Rates by Grade Level, Ethnicity, and Gender

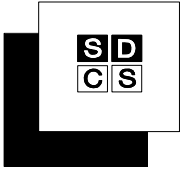
DEL SOL (439)

Grade	Afr. Am.		Asian		Filipino		Hispanic		Indoch.		Nat. Am.		Pac. Isl.		White		Total			Rates per 100		
	M	F	M	F	M	F	M	F	M	F	M	F	M	F	M	F	M	F	All	M	F	Total
Dropout Counts	7	0			0		0								0	0	0	0	0	0.0	0.0	0.0
	8						0	0							0	0	0	0	0	0.0	0.0	0.0
	9	0	0				1				0				0		1	0	1	20.0	0.0	16.7
	10	2	0				0	0							0		2	0	2	18.2	0.0	14.3
	11	0					1								0	0	1	0	1	20.0	0.0	14.3
	12	1	0			0									1	0	1	0	1	25.0	0.0	20.0
Totals (Grades 7-12)		3	0			0	2	0			0				0	0	5	0	5	13.9	0.0	10.6
Ethnic Totals		3				0	2				0				0							

Grades	Afr. Am.	Asian	Filipino	Hispanic	Indoch.	Nat. Am.	Pac. Isl.	White	Rates per 100		
									M	F	Total
7-12	27.3		0.0	20.0		0.0		0.0	13.9	0.0	10.6
8-12	30.0		0.0	22.2		0.0		0.0	17.9	0.0	13.5
9-12	30.0		0.0	28.6		0.0		0.0	20.0	0.0	15.6
10-12	37.5		0.0	16.7				0.0	20.0	0.0	15.4

Grade	Afr. Am.	Asian	Filipino	Hispanic	Indoch.	Nat. Am.	Pac. Isl.	White
7	0.0		0.0	0.0				0.0
8				0.0				0.0
9	0.0			100.0		0.0		0.0
10	66.7			0.0				0.0
11	0.0			100.0				0.0
12	25.0		0.0					

Grades	Afr. Am.	Asian	Filipino	Hispanic	Indoch.	Nat. Am.	Pac. Isl.	White	Rates per 100		
									M	F	Total
9-12	75.0		0.0	100.0		0.0		0.0	60.7	0.0	51.0
10-12	75.0		0.0	100.0				0.0	50.9	0.0	41.2



San Diego City Schools

2004-2005 Dropout Counts and Rates by Grade Level, Ethnicity, and Gender

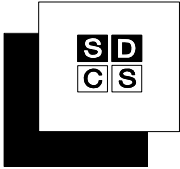
HOME AND HOSPITAL IN (382)

Grade	Afr. Am.		Asian		Filipino		Hispanic		Indoch.		Nat. Am.		Pac. Isl.		White		Total			Rates per 100										
	M	F	M	F	M	F	M	F	M	F	M	F	M	F	M	F	M	F	All	M	F	Total								
7															0		0		1	0.0		50.0								
8							0										0		2	0.0		200.0								
9						0	0	0							2	0	2	0	2	66.7	0.0	28.6								
10	0														0		0		0	0.0		0.0								
11								1							0	0	0	1	1	0.0	50.0	25.0								
12	0								0						0		0		0	0.0		0.0								
Totals (Grades 7-12)	0				0		0		3		0				2		1		2		4		6		15.4		66.7		31.6	
Ethnic Totals	0				0		3		0						3															

Grades	Afr. Am.	Asian	Filipino	Hispanic	Indoch.	Nat. Am.	Pac. Isl.	White	Rates per 100		
									M	F	Total
7-12	0.0		0.0	50.0	0.0			37.5	15.4	66.7	31.6
8-12	0.0		0.0	33.3	0.0			50.0	18.2	50.0	29.4
9-12	0.0		0.0	20.0	0.0			33.3	20.0	16.7	18.8
10-12	0.0			100.0	0.0			0.0	0.0	50.0	11.1

Grade	Afr. Am.	Asian	Filipino	Hispanic	Indoch.	Nat. Am.	Pac. Isl.	White
7								0.0
8				100.0				
9			0.0	0.0				100.0
10	0.0							0.0
11				100.0				0.0
12	0.0				0.0			

Grades	Afr. Am.	Asian	Filipino	Hispanic	Indoch.	Nat. Am.	Pac. Isl.	White	M	F	Total
9-12	0.0		0.0	100.0	0.0			100.0	66.7	50.0	46.4
10-12	0.0			100.0	0.0			0.0	0.0	50.0	25.0



San Diego City Schools

2004-2005 Dropout Counts and Rates by Grade Level, Ethnicity, and Gender

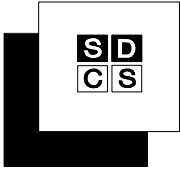
LCI INSTRUCTION (791)

Grade	Afr. Am.		Asian		Filipino		Hispanic		Indoch.		Nat. Am.		Pac. Isl.		White		Total		Rates per 100			
	M	F	M	F	M	F	M	F	M	F	M	F	M	F	M	F	M	F	All	M	F	Total
Dropout Counts	7	0					0	0							0	0	0	0	0	0.0	0.0	0.0
	8	0					0	0			0				0	0	0	0	0.0	0.0	0.0	
	9	0	0				1	1	0				0		0	0	1	1	2	6.3	5.6	5.9
	10	0	0				0	1							0	0	0	1	1	0.0	7.1	2.6
	11	0					0	0				0			0	0	0	0	0	0.0	0.0	0.0
	12		0		0		0	0							0	0	0	0	0	0.0	0.0	0.0
Totals (Grades 7-12)		0	0		0		1	2	0		0	0	0		0	0	1	2	3	1.2	3.4	2.1
Ethnic Totals		0		0			3		0		0		0		0							

Grades	Afr. Am.	Asian	Filipino	Hispanic	Indoch.	Nat. Am.	Pac. Isl.	White	Rates per 100		
									M	F	Total
7-12	0.0	0.0		9.7	0.0	0.0	0.0	0.0	1.2	3.4	2.1
8-12	0.0	0.0		10.3	0.0	0.0	0.0	0.0	1.3	3.4	2.2
9-12	0.0	0.0		12.5	0.0	0.0	0.0	0.0	1.7	3.8	2.7
10-12	0.0	0.0		5.9		0.0		0.0	0.0	2.9	1.3

Grade	Afr. Am.	Asian	Filipino	Hispanic	Indoch.	Nat. Am.	Pac. Isl.	White
7	0.0			0.0				0.0
8	0.0			0.0		0.0		0.0
9	0.0			28.6	0.0		0.0	0.0
10	0.0			16.7				0.0
11	0.0			0.0		0.0		0.0
12	0.0	0.0		0.0				0.0

Grades	Afr. Am.	Asian	Filipino	Hispanic	Indoch.	Nat. Am.	Pac. Isl.	White	M	F	Total
9-12	0.0	0.0		40.5	0.0	0.0	0.0	0.0	6.3	12.3	8.4
10-12	0.0	0.0		16.7		0.0		0.0	0.0	7.1	2.6



San Diego City Schools

2004-2005 Dropout Counts and Rates by Grade Level, Ethnicity, and Gender

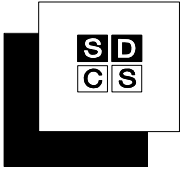
NEW DAWN (438)

Grade	Afr. Am.		Asian		Filipino		Hispanic		Indoch.		Nat. Am.		Pac. Isl.		White		Total			Rates per 100		
	M	F	M	F	M	F	M	F	M	F	M	F	M	F	M	F	M	F	All	M	F	Total
Dropout Counts	9	0	0				0	0							0		0	0	0	0.0	0.0	0.0
	10	0	0	0			1	0									1	0	1	10.0	0.0	7.1
	11	0	0				0								0		0	0	0	0.0	0.0	0.0
	12	0	0			0	0	0						0		0	0	0	0	0.0	0.0	0.0
Totals (Grades 9-12)		0	0	0	0	0	1	0						0	0		1	0	1	2.7	0.0	1.9
Ethnic Totals		0		0	0	0	1							0	0							

Grades	Afr. Am.	Asian	Filipino	Hispanic	Indoch.	Nat. Am.	Pac. Isl.	White	M	F	Total
9-12	0.0	0.0	0.0	5.0			0.0	0.0	2.7	0.0	1.9
10-12	0.0	0.0	0.0	7.7			0.0	0.0	3.6	0.0	2.7

Grade	Afr. Am.	Asian	Filipino	Hispanic	Indoch.	Nat. Am.	Pac. Isl.	White
9	0.0			0.0				0.0
10	0.0	0.0		14.3				
11	0.0			0.0				0.0
12	0.0		0.0	0.0			0.0	0.0

Grades	Afr. Am.	Asian	Filipino	Hispanic	Indoch.	Nat. Am.	Pac. Isl.	White	M	F	Total
9-12	0.0	0.0	0.0	14.3			0.0	0.0	10.0	0.0	7.1
10-12	0.0	0.0	0.0	14.3			0.0	0.0	10.0	0.0	7.1



San Diego City Schools

2004-2005 Dropout Counts and Rates by Grade Level, Ethnicity, and Gender

RILEY (364)

Grade	Afr. Am.		Asian		Filipino		Hispanic		Indoch.		Nat. Am.		Pac. Isl.		White		Total			Rates per 100		
	M	F	M	F	M	F	M	F	M	F	M	F	M	F	M	F	M	F	All	M	F	Total
Dropout Counts	7	0					0								0	0	0	0	0	0.0	0.0	0.0
	8	0	0				0		0		0				0	0	0	0	0	0.0	0.0	0.0
Totals (Grades 7-8)		0	0				0		0		0				0	0	0	0	0	0.0	0.0	0.0
Ethnic Totals		0					0		0		0				0							

Rates by Grade

Grade	Afr. Am.	Asian	Filipino	Hispanic	Indoch.	Nat. Am.	Pac. Isl.	White
7	0.0			0.0				0.0
8	0.0			0.0	0.0	0.0		0.0