

---

---

## Report on Dropouts and Graduates, 2003–04

### Introduction

This report presents district and school dropout and graduation data for the 2003–04 academic year. Dropout analyses address grade level, race/ethnicity, gender, economic disadvantage, English language proficiency, and special education status.

### Background

San Diego City Schools reports dropout data to the California Department of Education (CDE) through the annual California Basic Educational Data System (CBEDS) report. The CDE defines a dropout as any student in Grades 7–12 who:

- left school before graduation or attainment of the legal equivalent (passed the General Educational Development [GED] examination or the California High School Proficiency Examination [CHSPE])<sup>1</sup> and
- did not return to a school or an educational program by October of the following school year.

Although this general definition still applies, the CDE changed the working definition of dropout beginning with 2002–03, thereby aligning California’s definition with that of the National Center for Education Statistics (NCES). There are five important differences between the current and former working definition which impact the district dropout rate:

- **The dropout period** changed from April to April to the regular school year (September to June for traditional schedule schools and September to July for year-round schools). This change increases the dropout rate. The increase is thought to occur primarily because not all transcript requests from nondistrict schools for students who left the district at the end of the prior school year (June or July) are received by district schools by dropout determination day in early October of the following school year.
- **Students who leave the United States** are not dropouts. Formerly, such students were dropouts unless there is a documented intention to enroll in school in another country. This change reduces the dropout rate.

---

<sup>1</sup> The district does not count Grade 12 students who receive a Certificate or a Letter of Recognition as dropouts. See Administrative Procedure 4770 for definitions of these documents.

- **Students enrolled in the High School Diploma Program (HSDP)** during the dropout period who are not still enrolled in HSDP on drop determination day of the next school year (October 1, 2004, for the 2003–04 school year) are dropouts. Prior to 2002–03, HSDP students who earned at least one credit during the dropout period were not counted as dropouts. This change increases the dropout rate.
- **Students waived to enroll in a community college** during the dropout period who have not attained a high school diploma or GED and are not still enrolled at the community college on drop determination day of the next school year are dropouts. Prior to 2002–03, students the district waived to enroll in community college were not counted as dropouts. This change increases the dropout rate.
- **Severely disabled students** can be counted as dropouts. Before 2002–03, the district did not report severely disabled students as dropouts. (These dropouts are reported in the grade appropriate for their age.) This change increases the dropout rate.

These changes resulted in a higher “new-rules” dropout rate compared to the rate from the old rules. The new-rules Grade 7–12 dropout rate for 2002–03 was 3.5 percent (2,040 dropouts), about 25 percent higher than the “old-rules” rate of 2.8 percent (1,607 dropouts). The primary impact of the changes was on Grade 9–12 dropout rates.

The benefit of the changes is that district, California, and NCES reports of national dropout rates are comparable.

Secondary schools routinely documented the school status of students who left during the dropout period and documentation data were collected from schools in October–November 2004 using the web-based Dropout Data Collection system. Dropouts were identified from the documentation data and summary school-level dropout figures were reported to the CDE in the 2004 CBEDS report.

### Types of Dropout Rates

Two types of dropout rates are used in this report to provide different perspectives on the student dropout problem:

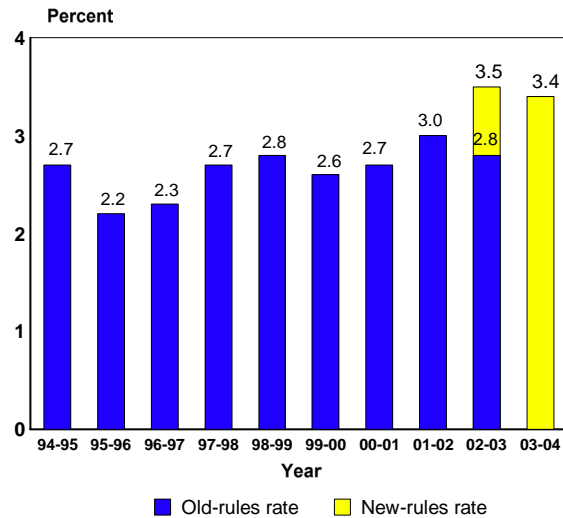
- The **single-year rate** measures the proportion of students that drop out in a single year. The rates for several years can be compared to determine the dropout trend. The single-year rate is computed by dividing the number of dropouts for a group by the group’s enrollment and multiplying by 100.
- The **estimated four-year rate** measures the dropout rate for a high school graduation class based on the individual Grade 9–12 rates for the current year. This rate estimates the proportion of students in Grade 9 that is expected to drop out over the course of four years of high school, presuming the underlying grade level dropout rates remain unchanged from those for the current year. The estimated four-year rate is derived by

successively multiplying the “survival” rates  $((100 - \text{dropout rate})/100)$  for each grade to achieve a four-year survival rate, multiplying that figure by 100 and subtracting the result from 100.

Due to the rule changes, district dropout data for years prior to 2002–03 are not comparable to those for 2002–03 and later. Therefore, the focus of this report is mainly on 2002–03 and 2003–04. However, to provide the reader some sense of trends in district dropout rates over a longer period of time, some analyses will include years prior to 2002–03.

*District Grade 7–12 Single-Year Dropout Rates*

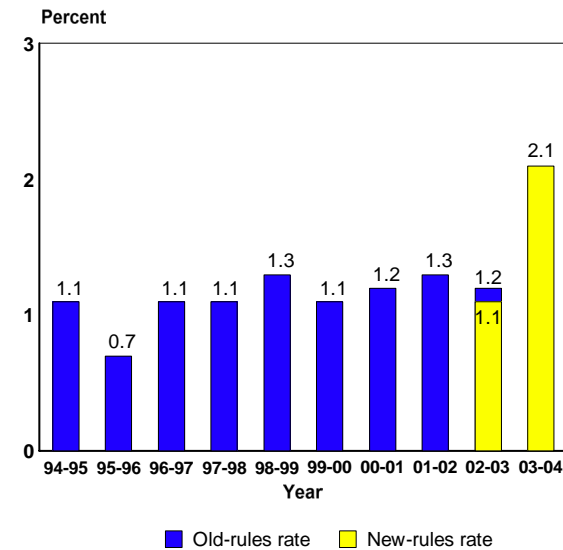
In 2003–04, 2,018 Grade 7–12 students dropped out, less than in the prior year (2,040). Figure 1 shows district Grade 7–12 dropout rates for the past decade. The old- and new-rules rates for 2002–03 overlap to illustrate the effect of the rule changes on the dropout rate. The new-rules rate was about 25 percent greater than the old- rules rate, the difference between 3.5 and 2.8 percent, respectively. In 2003–04, the district Grade 7–12 dropout rate decreased to 3.4 percent from 3.5 percent the prior year.



**Figure 1.** Grade 7–12 single-year dropout rate, 1994–95 through 2003–04.

*Middle Level and High School Dropout Rates*

The middle level Grade 7–8 dropout rates for the past ten years are shown in Figure 2. The 2002–03 old-rules rate overlaps the new-rules rate, revealing that the new-rules rate was lower than the old-rules rate by 0.1 percentage point. However, the 2003–04 rate is almost twice the prior year’s new-rules rate. This anomalous increase may primarily be due to inadequate data collection by some middle level schools<sup>2</sup> (see Tables 2 and 3 for middle level school data).



**Figure 2.** Grade 7–8 single-year dropout rate, 1994–95 through 2003–04.

<sup>2</sup> Grade 6 students who are promoted at the end of a school year (e.g., 2002–03) but do not enroll in Grade 7 in the district the next year (e.g., 2003–04) are included in the dropout data collection for Grade 7 students. Middle level schools reported 164 such students as Grade 7 dropouts in 2003–04. The balance of the Grade 7

The Grade 9–12 dropout rate was 4.2 percent in 2003–04, lower than the prior year rate of 4.8 percent (see Figure 3). Table 1 shows the 2003–04 single-year dropout rates for the ten largest California school districts. San Diego had the fifth highest Grade 9–12 dropout rate among these districts, far lower than that for Los Angeles but far higher than that for San Francisco.

**Table 1**

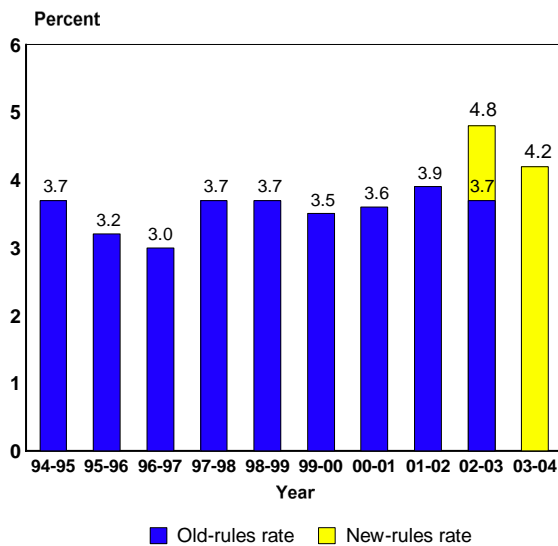
2003–04 Grade 9–12 Dropout Rates for California’s Ten Largest School Districts

District	One-year Rate	Four-year Rate
Los Angeles	8.0	33.1
Fresno	5.7	22.1
San Bernardino	5.6	20.9
San Juan	5.3	19.8
San Diego	4.2	16.5
Elk Grove	3.9	15.3
Long Beach	3.6	14.4
Santa Ana	2.7	12.0
Sacramento City	1.5	6.2
San Francisco	1.4	5.4
California	3.3	13.3

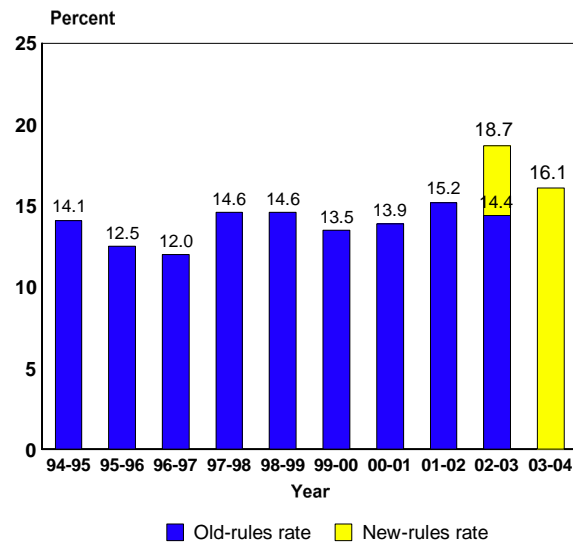
From CDE Data Quest report at <http://data1.cde.ca.gov/dataquest>

*Estimated Four-Year Dropout Rate*

Another way to look at high school dropouts is the estimated four-year dropout rate. Figure 4 shows that the current estimated four-year rate for a ninth-grade class is 16.1 percent, much lower than the 18.7 percent rate for the prior year. That is, 161 of every 1,000 district ninth graders are likely to drop out before graduation. If this estimate holds true, about 1,775 current ninth graders will drop out before finishing high school. The estimated rates for other large California school districts are show in Table 1.

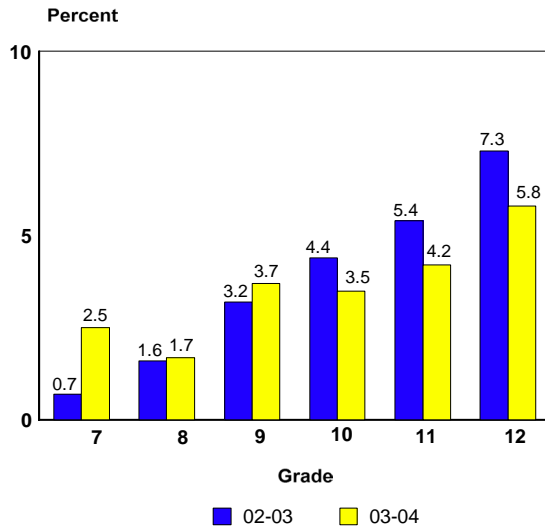


**Figure 3.** Grade 9–12 single-year rate, 1994–95 through 2003–04.

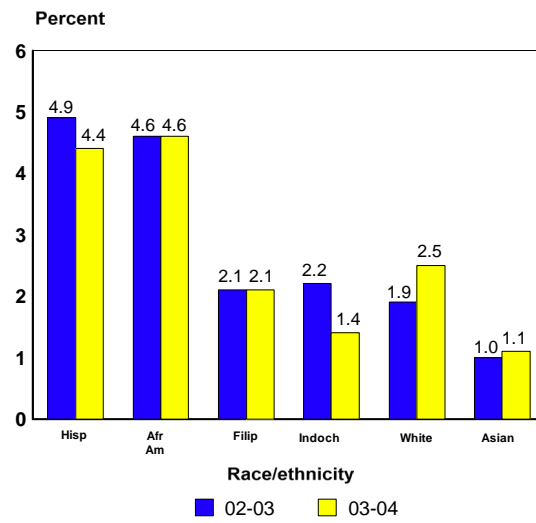


**Figure 4.** Grade 9–12 estimated four-year dropout rate, 1994–95 through 2003–04.

dropouts (106) were actually enrolled during 2003–04 before leaving school. The disproportionate number of Grade 7 no show dropouts suggests that some middle level schools did not collect or receive documentation information from the schools in which these students were enrolled at the end of 2002–03.



**Figure 5.** Grade 7–12 single-year dropout rates by grade level, 2002–03 and 2003–04.



**Figure 6.** Grade 7–12 single-year dropout rates by race/ethnicity, 2002–03 and 2003–04.

## Student Analyses

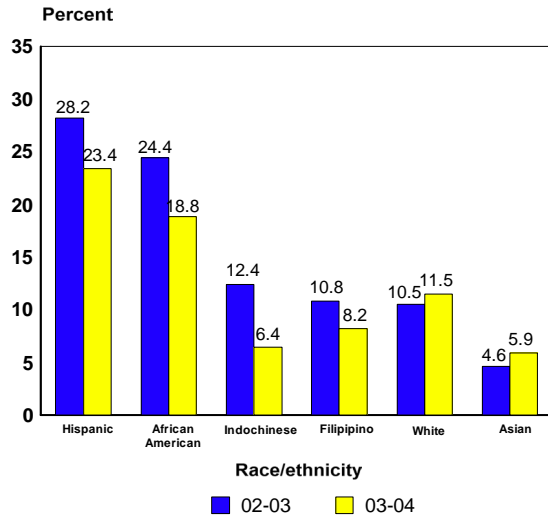
### Grade Level

In 2003–04, the Grade 7 dropout rate was 2.5 percent, far higher than the 0.7 percent rate for the prior year (see Figure 5). In contrast, the Grade 8 rate only increased from 1.6 to 1.7 percent. The Grade 9 dropout rate was considerably higher than the year before, 3.7 vs. 3.2 percent, due primarily to a large increase in the male dropout rate from 3.0 to 4.2 percent (171 to 233 dropouts) (see Appendix A). Grade 10–12 rates were much lower than the prior year.

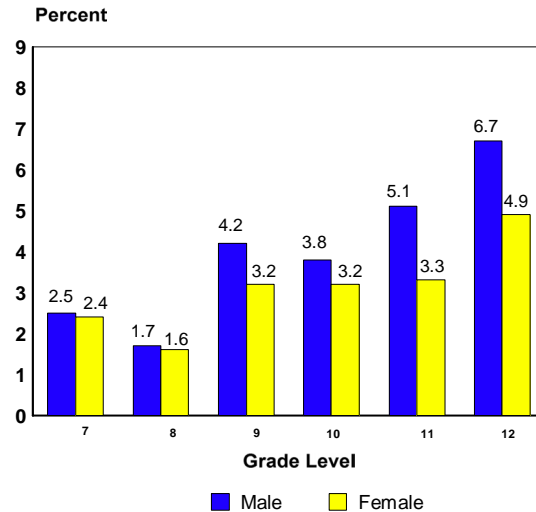
### Race/Ethnicity

In 2003–04, Grade 7–12 dropout rates for Hispanic and Indochinese students were lower than the prior year, African American and Filipino rates were unchanged, and White and Asian student dropout rates increased (see Figure 6). The Hispanic dropout rate decreased from 4.9 to 4.4 percent (a decrease of 10.3 percent) and the Indochinese rate fell from 2.2 to 1.4 percent (a 37.9 percent drop). African American and Filipino student rates held steady at 4.6 percent and 2.1 percent, respectively, while the White student rate increased from 1.9 to 2.5 percent (29.9 percent higher) and that for Asian students rose from 1.0 to 1.1 percent (a 9.8 percent increase).

Estimated Grade 9–12 rates for Hispanic, African American, Indochinese, and Filipino students are much lower in 2003–04 than the prior year (see Figure 7). In contrast, White and Asian students’ estimated rates increased in 2003–04.



**Figure 7.** Grade 9–12 estimated four-year dropout rates by race/ethnicity, 2002–03 and 2003–04.

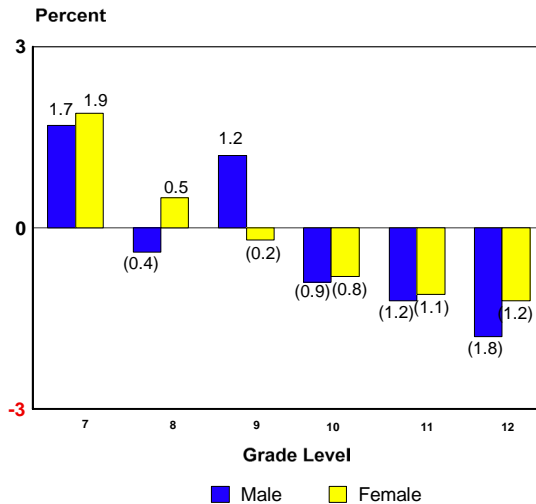


**Figure 8.** 2003–04 dropout rates by grade level and gender.

*Gender*

In 2003–04, the Grade 7–12 dropout rate for male students was 3.8 percent and the female rate was 3.0 percent. The male rate was 0.1 percentage point lower than in 2002–03, while the female rate was unchanged from the prior year. However, male and female dropout rates for Grade 9–12 were lower than those for 2003–04. The male dropout rate fell to 4.1 percent from 4.6 percent and the female dropout rate dropped to 3.1 percent from 3.6 percent.

Figure 8 compares 2003–04 male and female dropout rates by grade level. Male and female rates at Grade 7 and 8 were similar, but by Grade 9–12 male rates were considerably higher than female rates. The Grade 9 male rate was about two and a half times the Grade 8 male rate and also was higher than the Grade 10 male rate. The male rate rose steeply from Grade 10 to peak at 6.7 percent for Grade 12. Female rates were almost identical for Grade 9–11 (3.2 or 3.3 percent) and jumped to 4.9 percent for Grade 12.



**Figure 9.** Percentage point dropout rate changes 2002–03 to 2003–04 by grade level and gender.

Figure 9 shows percentage point changes in male and female dropout rates by grade level from 2002–03 to 2003–04. For Grade 10–12, male and female dropout rates were much lower than for the prior year, with the largest decrease for Grade 12 male students. The male dropout rate decreased and the female rate increased for Grade 8, while the reverse occurred for Grade 9. The Grade 9 male

rate increased by 1.2 percentage points, while the female rate fell 0.2 percentage points. Grade 7 male and female rate increases are likely another manifestation of the middle level school difficulty with dropout data collection.

*Economically Disadvantaged*

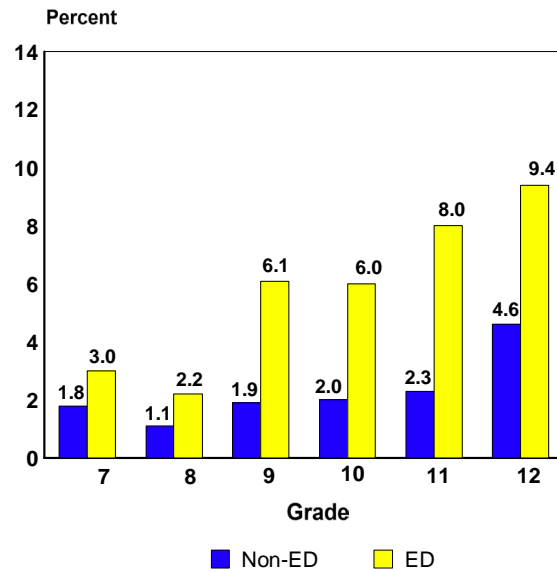
For this analysis, students certified eligible for free or reduced-price meals are identified as economically disadvantaged.<sup>3</sup>

In 2003–04, 63.0 percent of dropouts were economically disadvantaged (ED). The dropout rate for ED students was about twice the rate for students who were not identified as ED. The rates for ED students in 2002–03 and 2003–04 were similar, 4.8 percent and 4.9 percent, respectively. The dropout rates for non-ED students were 2.4 percent and 2.3 percent, respectively.<sup>4</sup>

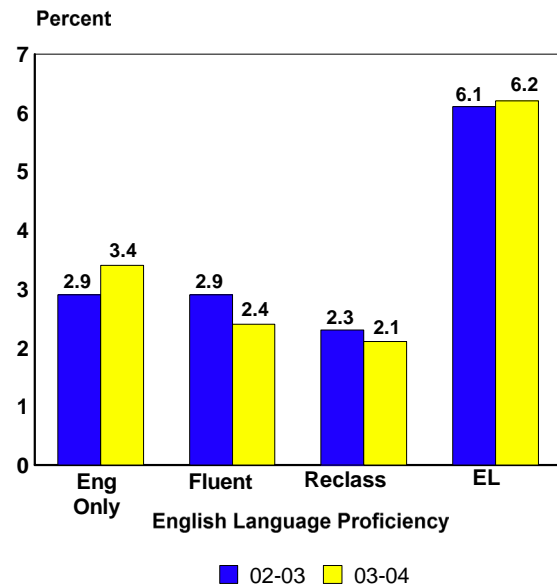
Grade level differences between the dropout rates for ED and non-ED students were varied (see Figure 10). The gaps in Grades 9–12 were especially large; rates for ED students were two to three and a half times the rates for non-ED students. Grade 9–12 dropout rates ranged from 6.1 to 9.4 percent for economically disadvantaged students and from 1.9 to 4.6 percent for non-ED students.

*English Language Proficiency*

The 2003–04 dropout rate of 6.2 percent for Grade 7–12 English Learner (EL) students



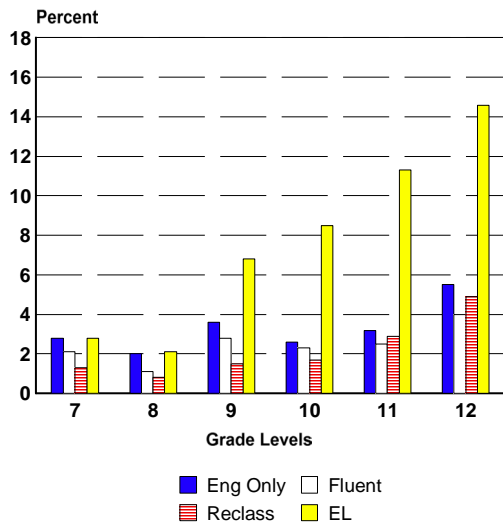
**Figure 10.** 2003–04 dropout rates for economically disadvantaged and non-economically disadvantaged



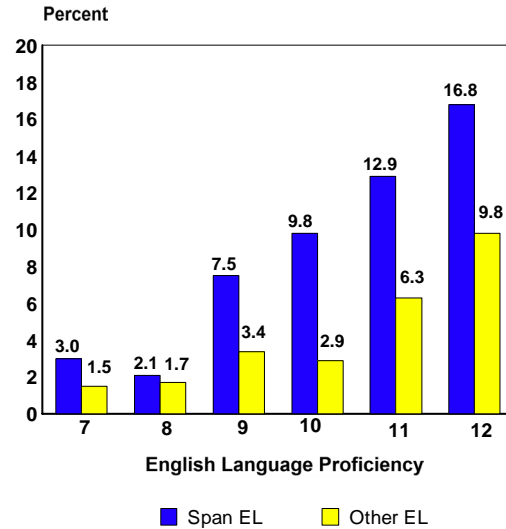
**Figure 11.** Grade 7–12 dropout rates by English language proficiency, 2002–03 and 2003–04.

<sup>3</sup> The district annually produces a statistical report on economically disadvantaged students entitled *Students with Financial Need*, which provides counts and rates for the district and each school.

<sup>4</sup> The dropout data collection changes made by the CDE, beginning with 2002–03, increased the dropout rates for both ED and non-ED dropouts. In 2002–03, the old-rules rate for the ED dropouts was 4.0 percent; under the new rules the rate was 4.8 percent. For non-ED dropouts the old-rules dropout rate was 1.9 percent and the new rules rate was 2.4 percent.



**Figure 12.** Dropout rates by English language proficiency and grade level, 2003–04.



**Figure 13.** Grade 7–12 dropout rates for Spanish-speaking EL and other EL students by grade level, 2003–04.

showed little change from the 6.1 percent rate for 2002–03 (see Figure 11). Dropout rates for reclassified (EL students who are “reclassified” as English proficient) and fluent students (students with a home language other than English who were English fluent when they enrolled) were lower than in the prior year. The reclassified student dropout rate decreased from 2.3 to 2.1 percent and the rate for fluent students fell to 2.4 from 2.9 percent. However, the dropout rate for English Only students rose from 2.9 percent in 2002–03 to 3.4 percent in 2003–04.

The EL dropout rate in 2003–04, nearly twice that for English Only students, was about two and a half times that for fluent students and was almost three times the rate for reclassified students . It appears that EL students who cleared the hurdle of reclassification were much less likely to drop out than other students.

Dropout rates for English Learner proficiency groups were lower at Grade 8 than at Grade 7 (see Figure 12); this may reflect the middle level school difficulty with Grade 7 dropout data collection. Dropout rates for EL students rose steeply from Grade 8 to Grade 12 (2.1 to 14.6 percent); reclassified student dropout rates increased steadily for those same grade levels (0.8 to 4.9 percent). In contrast, the rates for English Only and fluent students increased from Grade 8 to Grade 9, dropped to lower rates at Grade 10 and 11, and then rose at Grade 12.

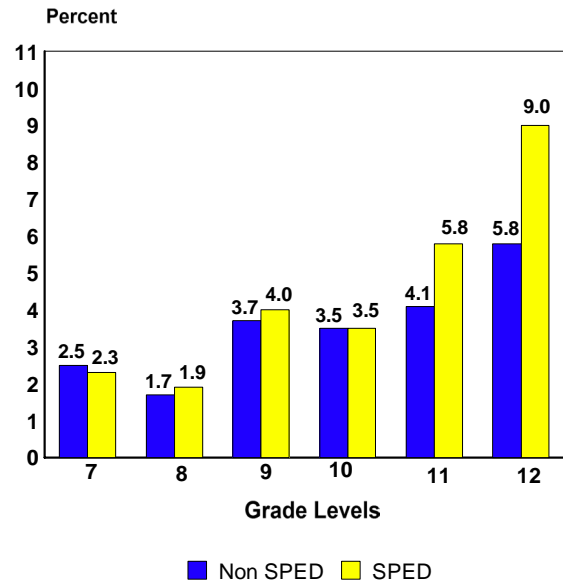
English Learner dropout rates vary by home (primary) language. The Spanish-speaking EL dropout rate was much higher than the combined dropout rate for other EL dropouts: 6.7 vs. 3.8 percent, respectively. Figure 13 shows that Grade 9–11 Spanish-speaking EL rates were at least double the rates for other English Learners. At Grade 12, the Spanish-speaking EL rate was about 70 percent higher than that for other English Learners.



*Special Education Student Dropouts*

The Grade 7–12 special education student dropout rate in 2003–04 was 3.8 percent (238 dropouts), much higher than the 2002–03 rate of 2.8 percent (195 dropouts). The dropout rate for special education students in 2003–04 was higher than the 3.4 percent rate for non-special education students, a reversal from the prior year.

Figure 14 shows that special education student dropout rates were similar to the non-special education student rates at Grades 7–10 but were considerably higher at Grades 11–12.



**Figure 14.** Single-year dropout rates for non-special education and special education students by grade level, 2003–04.

**School Analyses**

In 2003–04, dropout rates for senior high and alternative schools decreased from the prior year and middle level and atypical school rates increased (see Tables 2–6).

Among Grade 7–8 middle level schools, 18 experienced dropout rate increases, seven had decreases, and two were unchanged from the prior year. Creative, Performing, and Media Arts (CPMA) and High Tech Middle are listed for the first time. Overall, the Grade 7–8 middle school dropout rate rose from 1.0 percent (174 dropouts) in 2002–03 to 1.8 percent (309 dropouts) in 2003–04. Four schools (King/Chavez, Language Academy, Lewis, and Muirlands) reported no dropouts, but Wilson and Keiller recorded very large increases (see Table 2). Wilson’s dropout count rose from 22 to 46 and Keiller’s count from 3 to 28. Table 3 shows that in 2003–04 Bell more than doubled its dropout count and rate for the prior year. As mentioned earlier in this report, middle level school increases may be due to inadequate dropout data collection by some middle level schools.

The Grade 9–12 senior high school dropout rate decreased from 3.0 percent in 2002–03 to 2.6 percent in 2003–04 (see Table 4). These schools had 121 fewer dropouts than the year before, primarily resulting from very large decreases for Hoover (245 to 130 dropouts) and Morse (220 to 111 dropouts). On the other hand, Mission Bay’s dropout count doubled (31 to 62 dropouts) and that for Scripps Ranch almost doubled (18 to 35). San Diego’s dropout count increased from 112 to 150. The atypical school dropout rate rose to 3.7 percent in 2003–04 from 1.7 percent the prior year, due to the very large increase for Gompers (see Table 5). Gompers’ dropout count increased from 58 to 134, which drove its dropout rate from 3.4 to 7.3 percent. In contrast, the alternative school dropout rate decreased from 21.6 to 18.2 percent (see Table 6). There were 116 fewer dropouts in 2003–04 than in 2002–03, mainly due to significant reductions for Twain (36.3 to 22.0 percent) and Charter School of San Diego (16.9 to 12.6 percent). These two schools combined reported 144 fewer dropouts. YOU, on the other hand, had 45 more dropouts and a rate increase from 31.1 percent to 49.2 percent.

**Table 2**

Grade 7–8 Middle Level School Dropout Data, 2002–03 and 2003–04

School	2002–03		2003–04		Count Change	Rate Change
	Count	Rate	Count	Rate		
CPMA <sup>1</sup>	—	—	23	<b>11.6</b>	—	—
Challenger	11	<b>1.5</b>	1	<b>0.1</b>	-10	<b>-1.4</b>
Clark	20	<b>1.8</b>	25	<b>2.3</b>	5	<b>0.5</b>
Correia	2	<b>0.2</b>	10	<b>1.0</b>	8	<b>0.8</b>
De Portola	0	<b>0.0</b>	4	<b>0.6</b>	4	<b>0.6</b>
Farb	0	<b>0.0</b>	13	<b>2.0</b>	13	<b>2.0</b>
High Tech <sup>2</sup>	—	—	1	<b>0.5</b>	—	—
Holly Drive	3	<b>8.3</b>	4	<b>12.1</b>	1	<b>3.8</b>
Keiller	3	<b>0.6</b>	28	<b>5.7</b>	25	<b>5.1</b>
King/Chavez	1	<b>0.9</b>	0	<b>0.0</b>	-1	<b>-0.9</b>
Kroc	1	<b>0.1</b>	5	<b>0.5</b>	4	<b>0.4</b>
Lang Academy	0	<b>0.0</b>	0	<b>0.0</b>	0	<b>0.0</b>
Lewis	1	<b>0.1</b>	0	<b>0.0</b>	-1	<b>-0.1</b>
Longfellow	2	<b>2.4</b>	8	<b>12.5</b>	6	<b>10.1</b>
Mann	17	<b>1.9</b>	21	<b>2.3</b>	4	<b>0.4</b>
Marshall	3	<b>0.4</b>	6	<b>0.7</b>	3	<b>0.3</b>
Marston	5	<b>0.5</b>	4	<b>0.4</b>	-1	<b>-0.1</b>
Montgomery	11	<b>2.1</b>	9	<b>1.7</b>	-2	<b>-0.4</b>
Muirlands	0	<b>0.0</b>	0	<b>0.0</b>	0	<b>0.0</b>
O'Farrell	33	<b>3.1</b>	37	<b>3.6</b>	4	<b>0.5</b>
Pacific Beach	0	<b>0.0</b>	1	<b>0.2</b>	1	<b>0.2</b>
Pershing	2	<b>0.3</b>	4	<b>0.6</b>	2	<b>0.3</b>
Roosevelt	15	<b>1.5</b>	23	<b>2.8</b>	8	<b>1.3</b>
Sojourner Truth	6	<b>21.4</b>	18	<b>81.8</b>	12	<b>60.4</b>
Standley	9	<b>1.0</b>	7	<b>0.8</b>	-2	<b>-0.2</b>
Taft	4	<b>0.7</b>	5	<b>0.9</b>	1	<b>0.2</b>
Tubman	3	<b>4.4</b>	1	<b>1.4</b>	-2	<b>-3.0</b>
Wangenheim	0	<b>0.0</b>	5	<b>0.5</b>	5	<b>0.5</b>
Wilson	22	<b>2.8</b>	46	<b>5.8</b>	24	<b>3.0</b>
<b>Total</b>	<b>174</b>	<b>1.0</b>	<b>309</b>	<b>1.8</b>	<b>135</b>	<b>0.8</b>

<sup>1</sup> Creative, Performing, and Media Arts; school opened in 2003–04<sup>2</sup> School opened in 2003–04

**Table 3**

Grade 7–9 Middle Level School Dropout Data, 2002–03 and 2003–04

School	2002–03		2003–04		Count Change	Rate Change
	Count	Rate	Count	Rate		
Bell	31	1.5	69	3.7	38	2.2
Memorial	60	3.2	61	4.7	1	1.5
Total	91	2.3	130	3.8	39	1.5

**Table 4**

Grade 9–12 Senior High School Dropout Data, 2002–03 and 2003–04

School	2002–03		2003–04		Count Change	Rate Change
	Count	Rate	Count	Rate		
Clairemont	29	2.1	26	1.8	-3	-0.3
Cortez Hill	1	1.0	2	1.9	1	0.9
Crawford	109	6.3	117	6.9	8	0.6
Henry	18	0.8	23	1.0	5	0.2
High Tech	2	0.5	1	0.2	-1	-0.3
Hoover	245	11.1	130	6.0	-115	-5.1
Kearny	21	1.3	16	1.0	-5	-0.3
La Jolla	5	0.3	8	0.5	3	0.2
Madison	20	1.4	13	0.9	-7	-0.5
Mira Mesa	18	0.7	24	0.9	6	0.2
Mission Bay	31	1.9	62	3.6	31	1.7
Morse	220	7.1	111	3.7	-109	-3.4
Point Loma	34	1.7	48	2.5	14	0.8
San Diego	112	5.2	150	5.4	38	0.2
Scripps Ranch	18	0.9	35	1.5	17	0.6
Serra	48	2.5	42	2.1	-6	-0.4
University City	16	0.9	18	0.9	2	0.0
Total	947	3.0	826	2.6	-121	-0.4

**Table 5**

Atypical School Dropout Data, 2002–03 and 2003–04

School	2002–03		2003–04		Count Change	Rate Change
	Count	Rate	Count	Rate		
Gompers	58	<b>3.4</b>	134	<b>7.3</b>	76	<b>3.9</b>
Mt. Everest	0	<b>0.0</b>	0	<b>0.0</b>	0	<b>0.0</b>
Muir	2	<b>1.4</b>	3	<b>1.8</b>	1	<b>0.4</b>
Preuss School	1	<b>0.2</b>	0	<b>0.0</b>	-1	<b>-0.2</b>
SCPA <sup>1</sup>	3	<b>0.3</b>	6	<b>0.4</b>	3	<b>0.1</b>
Total	64	<b>1.7</b>	143	<b>3.7</b>	79	<b>2.0</b>

**Table 6**

Alternative School Dropout Data, 2002–03 and 2003–04

School	2002–03		2003–04		Count Change	Rate Change
	Count	Rate	Count	Rate		
ALBA <sup>1</sup>	1	<b>1.2</b>	14	<b>18.9</b>	13	<b>17.7</b>
Audeo	7	<b>20.0</b>	11	<b>10.1</b>	4	<b>-9.9</b>
CSSD <sup>2</sup>	233	<b>16.9</b>	172	<b>12.6</b>	-61	<b>4.3</b>
Connections	145	<b>91.8</b>	132	<b>88.0</b>	-13	<b>-3.8</b>
Del Sol	4	<b>6.9</b>	6	<b>14.0</b>	2	<b>7.1</b>
Garfield	68	<b>14.4</b>	46	<b>11.2</b>	-22	<b>3.2</b>
Home and Hospital	2	<b>3.7</b>	16	<b>57.1</b>	14	<b>53.4</b>
Integrated Life Skills	0	<b>0.0</b>	0	<b>0.0</b>	0	<b>0.0</b>
LCI Instruction <sup>3</sup>	9	<b>6.0</b>	7	<b>6.4</b>	-2	<b>0.4</b>
New Dawn	6	<b>12.0</b>	7	<b>18.4</b>	1	<b>6.4</b>
Riley	9	<b>21.4</b>	0	<b>0.0</b>	-9	<b>-21.4</b>
TRACE <sup>4</sup>	5	<b>2.5</b>	0	<b>0.0</b>	-5	<b>-2.5</b>
TRACE Seniors <sup>4</sup>	0	<b>0.0</b>	0	<b>0.0</b>	0	<b>0.0</b>
Twain	154	<b>36.3</b>	71	<b>22.0</b>	-83	<b>-14.3</b>
YOU <sup>5</sup>	82	<b>31.1</b>	127	<b>49.2</b>	45	<b>18.1</b>
Total	725	<b>21.6</b>	609	<b>18.2</b>	-116	<b>-3.4</b>

<sup>1</sup> Alternative Learning for Behaviors and Attitude<sup>2</sup> Charter School of San Diego<sup>3</sup> Licensed Children's Institution<sup>4</sup> Transitional Resources For Adult Community Education<sup>5</sup> Youth Opportunities Unlimited

**2003–04 Graduation Rates**

In 2001–02, the CDE introduced a graduation rate as a requirement of No Child Left Behind. The rate is derived by aggregating the number of graduates for a school year and the number of dropouts for a graduation class over the previous four years. The following formula presents the graduation rate calculation for 2003–04:

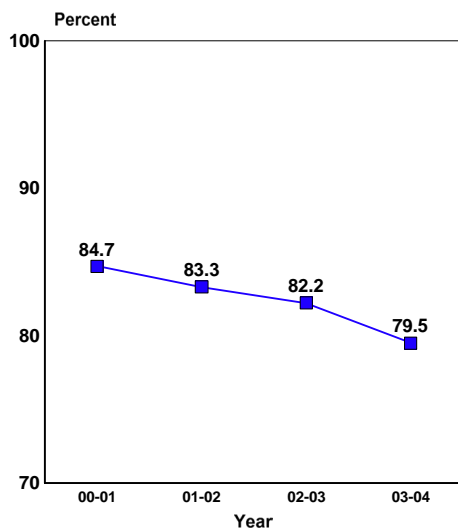
$$\frac{100 \times \text{Number of Graduates (2003–04)}}{\text{Number of Graduates (2003–04) + Grade 9 Dropouts (2000–01) + Grade 10 Dropouts (2001–02) + Grade 11 Dropouts (2002–03) + Grade 12 Dropouts (2003–04)}$$

Table 7 shows that San Diego’s graduation rate of 79.5 percent was seventh highest among California’s ten largest school districts. The overall California rate was 85.1 percent.<sup>5</sup> The decline of the district graduation rate since 2000–01 from 84.7 percent to 79.5 percent for 2003–04 is shown in Figure 15. The decline is primarily due to the new dropout data collection rules introduced in 2002–03. The calculation for 2003–04 includes Grade 9–10 old-rules dropout counts and Grade 11–12 new-rules dropout counts. The new-rules dropout counts are generally larger

**Table 7**

2004 Graduation Rates for California’s Ten Largest School Districts

District	Graduation Rate
San Juan	93.9
San Francisco	89.6
Santa Ana	84.2
Long Beach	82.6
Elk Grove	82.3
Sacramento City	80.4
San Diego	79.5
San Bernardino	79.0
Fresno	73.8
Los Angeles	66.4
California	85.1



**Figure 15.** District graduation rate, 2000–01 through 2003–04.

than under the former rules and, therefore, the graduation rate decreased. The full impact of the current dropout data collection rules will be revealed in the graduation rate for 2005–06, when all dropout counts will be derived using the current collection rules.

Based on the graduation rate, the four-year dropout rate for the Class of 2003–04 was 20.5

<sup>5</sup> California Department of Education DataQuest report at <http://data1.cde.ca.gov/dataquest>.

percent (100-graduation rate [79.5]). This dropout rate does not account for all attrition in this graduation class. The attrition rate for this class was 40.7 percent.<sup>6</sup> Certificates and Letters of Recognition were awarded to 1.3 percent of the 2003–04 graduation class, and 4.8 percent were

**Table 8**  
Senior High School Graduation Rates, 2002–03 and 2003–04

School	2002–03			2003–04			Rate Change
	Dropouts Grade 9–12	Grads	Grad Rate	Dropouts Grade 9–12	Grads	Grad Rate	
Clairemont	27	226	<b>89.3</b>	23	236	<b>91.1</b>	<b>1.8</b>
Cortez Hill <sup>1</sup>	—	—	—	3	14	<b>82.4</b>	—
Crawford	72	267	<b>78.8</b>	77	266	<b>77.6</b>	<b>-1.2</b>
Gompers	43	88	<b>67.2</b>	90	106	<b>54.1</b>	<b>-13.1</b>
Henry	15	422	<b>96.6</b>	27	407	<b>93.8</b>	<b>-2.8</b>
High Tech <sup>1</sup>	—	—	—	2	84	<b>97.7</b>	—
Hoover	125	269	<b>68.3</b>	150	262	<b>63.6</b>	<b>-4.7</b>
Kearny	14	298	<b>95.5</b>	19	285	<b>93.8</b>	<b>-1.7</b>
La Jolla	8	364	<b>97.8</b>	5	381	<b>98.7</b>	<b>0.9</b>
Madison	22	267	<b>92.4</b>	22	235	<b>91.4</b>	<b>-1.0</b>
Mira Mesa	16	585	<b>97.3</b>	24	511	<b>95.5</b>	<b>-1.8</b>
Mission Bay	20	299	<b>93.7</b>	31	304	<b>90.8</b>	<b>-2.9</b>
Morse	149	585	<b>79.7</b>	164	607	<b>78.7</b>	<b>-1.0</b>
Mt. Everest <sup>2</sup>	1	9	<b>90.0</b>	1	12	<b>92.3</b>	<b>2.3</b>
Muir <sup>2</sup>	0	6	<b>100.0</b>	3	11	<b>78.6</b>	<b>-21.4</b>
Point Loma	19	377	<b>95.2</b>	27	363	<b>93.1</b>	<b>-2.1</b>
Preuss <sup>3</sup>	—	—	—	0	55	<b>100.0</b>	—
SCPA <sup>4</sup>	7	177	<b>96.2</b>	2	170	<b>98.8</b>	<b>2.6</b>
San Diego	120	439	<b>78.5</b>	143	423	<b>74.7</b>	<b>-3.8</b>
Scripps Ranch	11	437	<b>97.5</b>	14	459	<b>97.0</b>	<b>-0.5</b>
Serra	23	352	<b>93.9</b>	47	340	<b>87.9</b>	<b>-6.0</b>
University City	14	319	<b>95.8</b>	24	410	<b>94.5</b>	<b>-1.3</b>
Total	739	5,924	<b>88.9</b>	898	5,941	<b>86.7</b>	<b>-2.2</b>

<sup>1</sup> School opened in 2000–01; this is the first year for which a graduation rate could be calculated.

<sup>2</sup> Changes are not meaningful or reliable when small numbers are involved.

<sup>3</sup> 2003–04 is the first graduation class

<sup>4</sup> School of Creative and Performing Arts

<sup>6</sup> Attrition is the reduction in the size of a graduation class between Grade 9 and graduation. The Class of 2003–04 had 10,732 Grade 9 students in 2000–01 and 6,359 graduates four years later, a difference of 4,373 students. This difference is divided by the Grade 9 enrollment and multiplied by 100 to produce the attrition rate.

enrolled in Grade 12 during 2003–04 but did not graduate with their class. In addition, about 1.7 percent moved out of the country, an estimated 7.9 percent entered alternative education programs (adult education, GED, and the Joint Diploma programs), and about 0.5 percent passed the California High School Proficiency Examination (CHSPE). Additionally, about 4.0 percent are unaccounted for.<sup>7</sup>

### School Analyses

The 2003–04 high school graduation rates for regular and alternative schools are shown in Tables 8 and 9, respectively. (Regular schools offer comprehensive educational programs to a general student population, whereas alternative schools serve students with various special needs.) Compared to the prior year, four schools had higher graduation rates and 22 schools had lower rates. The Preuss School graduated its first class in 2003–04 and had a 100 percent graduation rate.

The graduation rate for regular high schools was 86.7 percent, down from 88.9 percent for the prior year. Gompers' rate dropped from 67.2 to 54.1 percent. The alternative school rate was 44.9 percent, falling from 56.3 percent for 2002–03. Graduation rates for each alternative school declined, particularly for Charter School of San Diego and Garfield.

**Table 9**

Alternative High School Graduation Rates, 2002–03 and 2003–04

School	2002–03			2003–04			Rate Change
	Dropouts Grade 9–12	Grads	Grad Rate	Dropouts Grade 9–12	Grads	Grad Rate	
CSSD <sup>1</sup>	162	310	<b>65.7</b>	187	220	<b>54.1</b>	<b>-11.6</b>
Garfield	81	168	<b>67.5</b>	72	65	<b>47.5</b>	<b>-20.0</b>
Twain	170	77	<b>31.2</b>	159	59	<b>27.1</b>	<b>-4.1</b>
YOU <sup>2</sup>	84	84	<b>50.0</b>	82	63	<b>43.5</b>	<b>-6.5</b>
Total	497	639	<b>56.3</b>	500	407	<b>44.9</b>	<b>-11.4</b>

<sup>1</sup> Charter School of San Diego

<sup>2</sup> Youth Opportunities Unlimited

<sup>7</sup> Estimates are based on data from the district's 1999-2000 Dropout Data Memorandum, which contains an analysis of attrition for the Graduation Class of 1999–2000.

## Summary

The district Grade 7–12 dropout rate decreased from 3.5 percent in 2002–03 to 3.4 percent in 2003–04. Senior high and atypical school dropout rates decreased, while those for middle level and alternative school increased. The Grade 7–8 dropout rate increased, while the Grade 9–12 rate decreased considerably. Dropout rates were unchanged for African American and Indochinese students, decreased for Filipino and Hispanic students, and increased for Asian and White students. The rate for economically disadvantaged students fell, the English Learner student rate was almost unchanged, and the special education student rate was much higher than in 2002–03.

English Learners who cleared the hurdle of reclassification were much less likely to drop out than other students. Economically disadvantaged students were far more likely to drop out of high school than students who were not economically disadvantaged. Special education student dropout rates were generally higher than those for non-special education students.

The 2003–04 graduation rate was lower than the prior year. Very few schools were exceptions to the downward trend in graduation rates.

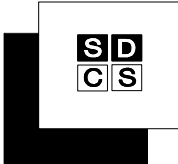
Report prepared by Gary W. Knowles



**Appendix A**

**2003–04 District Dropout Data Sheet**





# San Diego City Schools

## 2003-2004 Dropout Counts and Rates by Grade Level, Ethnicity, and Gender

### DISTRICT SUMMARY (000)

Grade	Afr. Am.		Asian		Filipino		Hispanic		Indoch.		Nat. Am.		Pac. Isl.		White		Total			Rates per 100			
	M	F	M	F	M	F	M	F	M	F	M	F	M	F	M	F	M	F	All	M	F	Total	
Dropout Counts	7	34	35	0	1	13	7	56	58	3	3	0	1	6	1	33	19	145	125	270	2.5	2.4	2.5
	8	37	21	1	0	4	7	33	36	3	2	1	1	1	1	14	19	94	87	181	1.7	1.6	1.7
	9	51	27	3	2	9	7	110	89	7	3	2	1	4	0	47	38	233	167	400	4.2	3.2	3.7
	10	31	23	1	0	6	5	123	97	4	4	1	2	1	2	27	24	194	157	351	3.8	3.2	3.5
	11	46	28	1	3	15	4	142	89	3	3	1	0	4	1	31	24	243	152	395	5.1	3.3	4.2
	12	38	26	6	1	14	11	102	80	13	2	0	0	1	4	70	53	244	177	421	6.7	4.9	5.8
Totals (Grades 7-12)		237	160	12	7	61	41	566	449	33	17	5	5	17	9	222	177	1,153	865	2,018	3.8	3.0	3.4
Ethnic Totals		397		19		102		1,015		50		10		26		399							

Grades	Afr. Am.	Asian	Filipino	Hispanic	Indoch.	Nat. Am.	Pac. Isl.	White	Rates per 100		
									M	F	Total
7-12	4.6	1.1	2.1	4.4	1.4	3.2	4.3	2.5	3.8	3.0	3.4
8-12	4.7	1.2	2.0	5.0	1.5	3.4	3.7	2.6	4.1	3.1	3.6
9-12	4.9	1.5	2.1	6.1	1.6	3.4	4.2	2.9	4.8	3.5	4.2
10-12	5.1	1.4	2.2	6.8	1.6	2.6	4.5	2.9	5.0	3.7	4.4

Grade	Afr. Am.	Asian	Filipino	Hispanic	Indoch.	Nat. Am.	Pac. Isl.	White
7	4.2	0.3	2.6	2.4	1.0	1.9	7.1	1.9
8	3.7	0.3	1.4	1.6	0.9	3.7	1.9	1.2
9	4.6	1.6	2.0	4.6	1.6	5.4	3.5	3.0
10	3.8	0.3	1.3	5.6	1.2	5.3	2.7	1.8
11	5.5	1.4	2.1	7.1	1.0	2.0	5.3	2.0
12	6.5	2.6	3.1	8.4	2.7	0.0	5.9	5.2

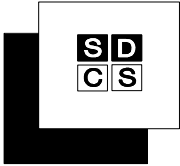
Grades	Afr. Am.	Asian	Filipino	Hispanic	Indoch.	Nat. Am.	Pac. Isl.	White	M	F	Total
9-12	18.8	5.9	8.2	23.4	6.4	12.1	16.3	11.5	18.4	13.8	16.1
10-12	14.9	4.3	6.4	19.7	4.9	7.1	13.3	8.8	14.8	11.0	12.9



**Appendix B**

**2003–04 School Dropout Data Sheets  
By School Type**





# San Diego City Schools

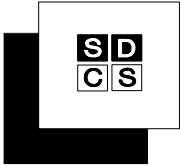
## 2003-2004 Dropout Counts and Rates by Grade Level, Ethnicity, and Gender

BELL (302)

Grade	Afr. Am.		Asian		Filipino		Hispanic		Indoch.		Nat. Am.		Pac. Isl.		White		Total		Rates per 100			
	M	F	M	F	M	F	M	F	M	F	M	F	M	F	M	F	M	F	All	M	F	Total
Dropout Counts	7	2	1	0	0	9	4	5	5	0	0	0	0	0	1	3	17	14	31	5.5	4.8	5.1
	8	2	2	0	0	2	1	1	4	0	0	1	0	0	0	0	6	7	13	1.8	2.1	2.0
	9	4	1	0	0	4	4	2	5	0	0	0	0	0	3	6	12	13	25	3.9	4.8	4.3
Totals (Grades 7-9)		8	4	0	0	15	9	8	14	0	0	1	0	0	1	6	35	34	69	3.7	3.8	3.7
Ethnic Totals		12		0		24		22		0		1		1		9						

Rates by Grade

Grade	Afr. Am.	Asian	Filipino	Hispanic	Indoch.	Nat. Am.	Pac. Isl.	White
7	2.8	0.0	5.7	4.6	0.0	0.0	6.3	15.4
8	2.7	0.0	1.3	2.5	0.0	33.3	0.0	0.0
9	4.0	0.0	3.7	3.8	0.0	0.0	0.0	12.8



# San Diego City Schools

## 2003-2004 Dropout Counts and Rates by Grade Level, Ethnicity, and Gender

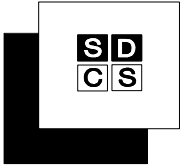
### CHALLENGER (303)

Grade	Afr. Am.		Asian		Filipino		Hispanic		Indoch.		Nat. Am.		Pac. Isl.		White		Total			Rates per 100		
	M	F	M	F	M	F	M	F	M	F	M	F	M	F	M	F	All	M	F	Total		
Dropout Counts	7	0	0	0	0	0	0	0	0	0	0	0	0	0	0	0	0	0	0	0.0	0.0	0.0
	8	0	0	0	1	0	0	0	0	0	0	0	0	0	0	0	1	0	1	0.6	0.0	0.3
Totals (Grades 7-8)		0	0	0	1	0	0	0	0	0	0	0	0	0	0	0	1	0	1	0.3	0.0	0.1
Ethnic Totals		0		0	1		0		0		0		0		0							

### Rates by Grade

Grade	Afr. Am.	Asian	Filipino	Hispanic	Indoch.	Nat. Am.	Pac. Isl.	White
7	0.0	0.0	0.0	0.0	0.0	0.0	0.0	0.0
8	0.0	0.0	0.8	0.0	0.0		0.0	0.0





# San Diego City Schools

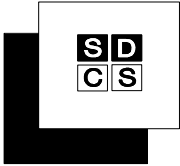
## 2003-2004 Dropout Counts and Rates by Grade Level, Ethnicity, and Gender

CLARK (322)

Grade	Afr. Am.		Asian		Filipino		Hispanic		Indoch.		Nat. Am.		Pac. Isl.		White		Total			Rates per 100		
	M	F	M	F	M	F	M	F	M	F	M	F	M	F	M	F	M	F	All	M	F	Total
Dropout Counts	7	1	0	0	0	0	3	4	0	0	0	0	1	0	0	0	5	4	9	1.6	1.5	1.6
	8	0	0	0	0	0	8	6	0	0	0	0	0	0	1	1	9	7	16	3.1	2.9	3.0
Totals (Grades 7-8)		1	0	0	0	0	11	10	0	0	0	0	1	0	1	1	14	11	25	2.4	2.2	2.3
Ethnic Totals		1		0		0	21		0		0		1		2							

Rates by Grade

Grade	Afr. Am.	Asian	Filipino	Hispanic	Indoch.	Nat. Am.	Pac. Isl.	White
7	1.5	0.0	0.0	1.7	0.0	0.0	50.0	0.0
8	0.0	0.0	0.0	3.7	0.0		0.0	8.7



# San Diego City Schools

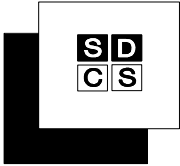
## 2003-2004 Dropout Counts and Rates by Grade Level, Ethnicity, and Gender

CORREIA (304)

Grade	Afr. Am.		Asian		Filipino		Hispanic		Indoch.		Nat. Am.		Pac. Isl.		White		Total			Rates per 100		
	M	F	M	F	M	F	M	F	M	F	M	F	M	F	M	F	All	M	F	Total		
Dropout Counts	7	1	0	0	0	0	1	2	0	0	0	0	0	0	3	2	5	4	9	1.8	1.7	1.7
Totals (Grades 7-8)	8	0	0	0	0	0	0	1	0	0	0	0	0	0	0	0	0	1	1	0.0	0.4	0.2
Ethnic Totals		1	0	0	0	0	1	3	0	0	0	0	0	0	3	2	5	5	10	0.9	1.0	1.0

Rates by Grade

Grade	Afr. Am.	Asian	Filipino	Hispanic	Indoch.	Nat. Am.	Pac. Isl.	White
7	2.3	0.0	0.0	1.2	0.0	0.0	0.0	2.6
8	0.0	0.0	0.0	0.5	0.0	0.0	0.0	0.0



# San Diego City Schools

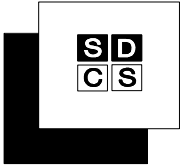
## 2003-2004 Dropout Counts and Rates by Grade Level, Ethnicity, and Gender

### C.P.M.A. (310)

Grade	Afr. Am.		Asian		Filipino		Hispanic		Indoch.		Nat. Am.		Pac. Isl.		White		Total		Rates per 100			
	M	F	M	F	M	F	M	F	M	F	M	F	M	F	M	F	All	M	F	Total		
Dropout Counts	7	3	5	0	0	1	2	4	0	0	0	0	0	0	4	4	9	14	23	10.5	12.5	11.6
Totals (Grades 7-8)	8	0	0	0	0	0	0	0	0	0	0	0	0	0	0	0	0	0	0	0.0	0.0	0.0
Ethnic Totals	8		0		1		6		0		0		0		8							

### Rates by Grade

Grade	Afr. Am.	Asian	Filipino	Hispanic	Indoch.	Nat. Am.	Pac. Isl.	White
7	12.1	0.0	25.0	10.7	0.0	0.0	0.0	12.5
8	0.0	0.0	0.0	0.0	0.0	0.0	0.0	0.0



# San Diego City Schools

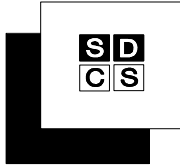
## 2003-2004 Dropout Counts and Rates by Grade Level, Ethnicity, and Gender

### DE PORTOLA (327)

Grade	Afr. Am.		Asian		Filipino		Hispanic		Indoch.		Nat. Am.		Pac. Isl.		White		Total			Rates per 100		
	M	F	M	F	M	F	M	F	M	F	M	F	M	F	M	F	M	F	All	M	F	Total
Dropout Counts	7	1	0	0	0	1	0	0	0	0	0	1	0	0	0	0	2	1	3	1.0	0.7	0.9
	8	1	0	0	0	0	0	0	0	0	0	0	0	0	0	1	0	1	0.6	0.0	0.3	
Totals (Grades 7-8)		2	0	0	0	1	0	0	0	0	0	1	0	0	0	3	1	4	0.8	0.3	0.6	
Ethnic Totals		2		0		1		0		0		1		0		0						

### Rates by Grade

Grade	Afr. Am.	Asian	Filipino	Hispanic	Indoch.	Nat. Am.	Pac. Isl.	White
7	2.3	0.0	10.0	0.0	0.0	20.0	0.0	0.0
8	2.6	0.0	0.0	0.0	0.0	0.0	0.0	0.0



# San Diego City Schools

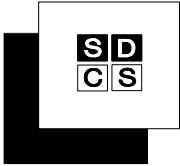
## 2003-2004 Dropout Counts and Rates by Grade Level, Ethnicity, and Gender

FARB (367)

Grade	Afr. Am.		Asian		Filipino		Hispanic		Indoch.		Nat. Am.		Pac. Isl.		White		Total			Rates per 100			
	M	F	M	F	M	F	M	F	M	F	M	F	M	F	M	F	M	F	All	M	F	Total	
Dropout Counts	7	0	2	0	0	0	1	0	0	1	0	0	1	0	2	2	4	5	9	2.3	3.1	2.7	
	8	2	0	0	0	0	1	0	0	0	0	0	0	0	1	1	3	1	4	2.0	0.7	1.3	
Totals (Grades 7-8)		2	2	0	0	0	0	2	0	0	1	0	1	0	2	3	7	6	13	2.1	1.9	2.0	
Ethnic Totals		4		0		0		2		1		0		1		5							

Rates by Grade

Grade	Afr. Am.	Asian	Filipino	Hispanic	Indoch.	Nat. Am.	Pac. Isl.	White
7	3.3	0.0	0.0	0.7	4.5	0.0	33.3	4.2
8	4.5	0.0	0.0	0.8	0.0	0.0	0.0	1.3



# San Diego City Schools

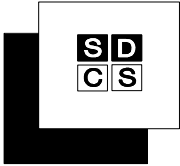
## 2003-2004 Dropout Counts and Rates by Grade Level, Ethnicity, and Gender

### HOLLY DRIVE (144)

Grade	Afr. Am.		Asian		Filipino		Hispanic		Indoch.		Nat. Am.		Pac. Isl.		White		Total			Rates per 100		
	M	F	M	F	M	F	M	F	M	F	M	F	M	F	M	F	All	M	F	Total		
Dropout Counts	7	0	0				0								0	0	0	0.0	0.0	0.0		
	8	0	0				0	0							1	3	4	14.3	25.0	21.1		
Totals (Grades 7-8)		0	0				0	0							1	3	4	7.1	15.8	12.1		
Ethnic Totals		0					0															

### Rates by Grade

Grade	Afr. Am.	Asian	Filipino	Hispanic	Indoch.	Nat. Am.	Pac. Isl.	White
7	0.0			0.0				
8	0.0			0.0				



# San Diego City Schools

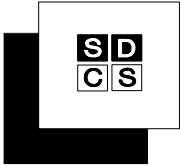
## 2003-2004 Dropout Counts and Rates by Grade Level, Ethnicity, and Gender

KEILLER (365)

Grade	Afr. Am.		Asian		Filipino		Hispanic		Indoch.		Nat. Am.		Pac. Isl.		White		Total		Rates per 100			
	M	F	M	F	M	F	M	F	M	F	M	F	M	F	M	F	All	M	F	Total		
Dropout Counts	7	1	3	0	0	1	0	3	7	0		0	0	0	0	0	5	10	15	4.1	8.3	6.2
Totals (Grades 7-8)	8	1	1	0	0	1	0	1	4	0	0	0	1	1	2	1	6	7	13	4.8	5.7	5.3
Ethnic Totals	2		4		0		0		2		0		4		11		0		0		0	
	6		0		2		0		15		0		2		3		11		17		28	

Rates by Grade

Grade	Afr. Am.	Asian	Filipino	Hispanic	Indoch.	Nat. Am.	Pac. Isl.	White
7	4.5	0.0	7.1	8.5	0.0	0.0	0.0	0.0
8	1.8	0.0	12.5	5.0	0.0	0.0	28.6	21.4



# San Diego City Schools

## 2003-2004 Dropout Counts and Rates by Grade Level, Ethnicity, and Gender

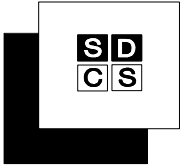
### HIGH TECH (306)

Grade	Afr. Am.		Asian		Filipino		Hispanic		Indoch.		Nat. Am.		Pac. Isl.		White		Total			Rates per 100		
	M	F	M	F	M	F	M	F	M	F	M	F	M	F	M	F	M	F	All	M	F	Total
Dropout Counts	7	0	0	0	0	0	0	0	0	0			0	0	0	0	0	0	0	0.0	0.0	0.0
	8	0	0	0	0	0	0	1	0	0			0	0	0	0	1	1	0.0	2.4	1.1	
Totals (Grades 7-8)		0	0	0	0	0	0	1	0	0			0	0	0	1	1	1	0.0	1.1	0.5	
Ethnic Totals		0		0		0		1		0			0		0							

### Rates by Grade

Grade	Afr. Am.	Asian	Filipino	Hispanic	Indoch.	Nat. Am.	Pac. Isl.	White
7	0.0	0.0	0.0	0.0	0.0		0.0	0.0
8	0.0	0.0	0.0	7.7	0.0			0.0





# San Diego City Schools

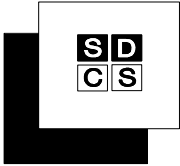
## 2003-2004 Dropout Counts and Rates by Grade Level, Ethnicity, and Gender

### KING/CHAVEZ (160)

Grade	Afr. Am.		Asian		Filipino		Hispanic		Indoch.		Nat. Am.		Pac. Isl.		White		Total			Rates per 100		
	M	F	M	F	M	F	M	F	M	F	M	F	M	F	M	F	All	M	F	Total		
Dropout Counts	7	0					0	0							0	0	0	0.0	0.0	0.0		
Totals (Grades 7-8)	8						0	0							0	0	0	0.0	0.0	0.0		
Ethnic Totals		0					0															

### Rates by Grade

Grade	Afr. Am.	Asian	Filipino	Hispanic	Indoch.	Nat. Am.	Pac. Isl.	White
7	0.0			0.0				
8				0.0				



# San Diego City Schools

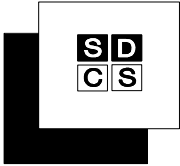
## 2003-2004 Dropout Counts and Rates by Grade Level, Ethnicity, and Gender

KROC (307)

Grade	Afr. Am.		Asian		Filipino		Hispanic		Indoch.		Nat. Am.		Pac. Isl.		White		Total			Rates per 100		
	M	F	M	F	M	F	M	F	M	F	M	F	M	F	M	F	M	F	All	M	F	Total
Dropout Counts	7	1	1	0	0	0	2	0	0	0	0	0	0	0	0	0	3	1	4	1.3	0.5	0.9
	8	1	0	0	0	0	0	0	0	0	0	0	0	0	0	1	0	1	0.4	0.0	0.2	
Totals (Grades 7-8)		2	1	0	0	0	2	0	0	0	0	0	0	0	0	4	1	5	0.8	0.2	0.5	
Ethnic Totals		3		0		0	2		0		0		0		0							

Rates by Grade

Grade	Afr. Am.	Asian	Filipino	Hispanic	Indoch.	Nat. Am.	Pac. Isl.	White
7	2.7	0.0	0.0	0.9	0.0	0.0	0.0	0.0
8	1.3	0.0	0.0	0.0	0.0	0.0	0.0	0.0



# San Diego City Schools

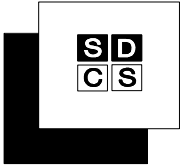
## 2003-2004 Dropout Counts and Rates by Grade Level, Ethnicity, and Gender

### LANGUAGE ACADEMY (170)

Grade	Afr. Am.		Asian		Filipino		Hispanic		Indoch.		Nat. Am.		Pac. Isl.		White		Total			Rates per 100		
	M	F	M	F	M	F	M	F	M	F	M	F	M	F	M	F	M	F	All	M	F	Total
Dropout Counts	7	0	0	0	0	0	0	0	0	0	0	0	0	0	0	0	0	0	0	0.0	0.0	0.0
	8	0	0	0	0	0	0	0	0	0	0	0	0	0	0	0	0	0	0	0.0	0.0	0.0
Totals (Grades 7-8)		0	0	0	0	0	0	0	0	0	0	0	0	0	0	0	0	0	0	0.0	0.0	0.0
Ethnic Totals		0		0	0		0		0		0			0		0						

### Rates by Grade

Grade	Afr. Am.	Asian	Filipino	Hispanic	Indoch.	Nat. Am.	Pac. Isl.	White
7	0.0	0.0	0.0	0.0				0.0
8	0.0	0.0	0.0	0.0		0.0		0.0



# San Diego City Schools

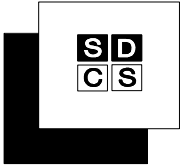
## 2003-2004 Dropout Counts and Rates by Grade Level, Ethnicity, and Gender

LEWIS (311)

Grade	Afr. Am.		Asian		Filipino		Hispanic		Indoch.		Nat. Am.		Pac. Isl.		White		Total			Rates per 100			
	M	F	M	F	M	F	M	F	M	F	M	F	M	F	M	F	M	F	All	M	F	Total	
Dropout Counts	7	0	0	0	0	0	0	0	0	0	0	0	0	0	0	0	0	0	0	0	0.0	0.0	0.0
	8	0	0	0	0	0	0	0	0	0	0	0	0	0	0	0	0	0	0	0.0	0.0	0.0	
Totals (Grades 7-8)		0	0	0	0	0	0	0	0	0	0	0	0	0	0	0	0	0	0	0.0	0.0	0.0	
Ethnic Totals		0		0		0		0		0		0		0		0							

Rates by Grade

Grade	Afr. Am.	Asian	Filipino	Hispanic	Indoch.	Nat. Am.	Pac. Isl.	White
7	0.0	0.0	0.0	0.0	0.0	0.0	0.0	0.0
8	0.0	0.0	0.0	0.0	0.0	0.0	0.0	0.0



# San Diego City Schools

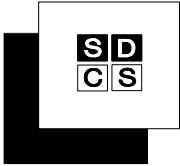
## 2003-2004 Dropout Counts and Rates by Grade Level, Ethnicity, and Gender

### LONGFELLOW (181)

Grade	Afr. Am.		Asian		Filipino		Hispanic		Indoch.		Nat. Am.		Pac. Isl.		White		Total		Rates per 100			
	M	F	M	F	M	F	M	F	M	F	M	F	M	F	M	F	All	M	F	Total		
Dropout Counts	7	0	1				0	0							0	1	0	2	2	0.0	10.0	6.3
	8	1	2				1	0							1	1	3	3	6	20.0	17.6	18.8
Totals (Grades 7-8)		1	3				1	0							1	2	3	5	8	11.1	13.5	12.5
Ethnic Totals		4					1							3								

### Rates by Grade

Grade	Afr. Am.	Asian	Filipino	Hispanic	Indoch.	Nat. Am.	Pac. Isl.	White
7	11.1			0.0				8.3
8	25.0			10.0				20.0



# San Diego City Schools

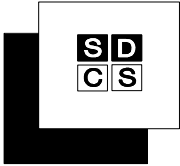
## 2003-2004 Dropout Counts and Rates by Grade Level, Ethnicity, and Gender

MANN (312)

Grade	Afr. Am.		Asian		Filipino		Hispanic		Indoch.		Nat. Am.		Pac. Isl.		White		Total		Rates per 100				
	M	F	M	F	M	F	M	F	M	F	M	F	M	F	M	F	M	F	All	M	F	Total	
Dropout Counts	7	2	2	0	0	0	0	3	1	0	0	0	0	1	0	0	1	6	4	10	2.6	1.7	2.1
	8	1	3	0	0	0	0	3	2	1	0	0	0	1	0	1	5	6	11	2.3	2.7	2.5	
Totals (Grades 7-8)		3	5	0	0	0	0	6	3	1	0	0	0	1	0	2	11	10	21	2.4	2.2	2.3	
Ethnic Totals		8		0		0		9		1		0		1		2							

Rates by Grade

Grade	Afr. Am.	Asian	Filipino	Hispanic	Indoch.	Nat. Am.	Pac. Isl.	White
7	4.1	0.0	0.0	1.7	0.0	0.0	50.0	3.2
8	4.5	0.0	0.0	2.2	1.2			4.2



# San Diego City Schools

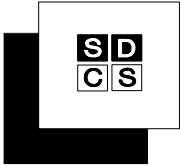
## 2003-2004 Dropout Counts and Rates by Grade Level, Ethnicity, and Gender

### MARSHALL (308)

Grade	Afr. Am.		Asian		Filipino		Hispanic		Indoch.		Nat. Am.		Pac. Isl.		White		Total		Rates per 100		
	M	F	M	F	M	F	M	F	M	F	M	F	M	F	M	F	All	M	F	Total	
Dropout Counts	7	0	0	0	0	0	0	0	0	0	0	0	3	0	3	0	3	1.5	0.0	0.7	
	8	1	0	0	0	0	0	0	1	0	0	0	1	0	3	0	3	1.4	0.0	0.7	
Totals (Grades 7-8)		1	0	0	0	0	0	0	1	0	0	0	4	0	6	0	6	1.4	0.0	0.7	
Ethnic Totals		1		0		0		0	1		0		4								

### Rates by Grade

Grade	Afr. Am.	Asian	Filipino	Hispanic	Indoch.	Nat. Am.	Pac. Isl.	White
7	0.0	0.0	0.0	0.0	0.0	0.0		1.1
8	9.1	0.0	0.0	0.0	5.0	0.0	0.0	0.3



# San Diego City Schools

## 2003-2004 Dropout Counts and Rates by Grade Level, Ethnicity, and Gender

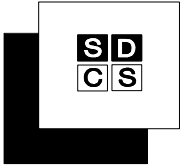
### MARSTON (313)

Grade	Afr. Am.		Asian		Filipino		Hispanic		Indoch.		Nat. Am.		Pac. Isl.		White		Total			Rates per 100			
	M	F	M	F	M	F	M	F	M	F	M	F	M	F	M	F	All	M	F	Total			
Dropout Counts	7	0	0	0	0	0	0	0	0	0	0	0	0	0	0	4	0	4	0	4	1.5	0.0	0.8
	8	0	0	0	0	0	0	0	0	0	0	0	0	0	0	0	0	0	0	0	0.0	0.0	0.0
Totals (Grades 7-8)		0	0	0	0	0	0	0	0	0	0	0	0	0	0	4	0	4	0	4	0.9	0.0	0.4
Ethnic Totals		0		0		0		0		0		0		0		4							

### Rates by Grade

Grade	Afr. Am.	Asian	Filipino	Hispanic	Indoch.	Nat. Am.	Pac. Isl.	White
7	0.0	0.0	0.0	0.0	0.0	0.0	0.0	2.1
8	0.0	0.0	0.0	0.0	0.0	0.0	0.0	0.0





# San Diego City Schools

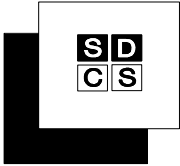
## 2003-2004 Dropout Counts and Rates by Grade Level, Ethnicity, and Gender

MEMORIAL (315)

Grade	Afr. Am.		Asian		Filipino		Hispanic		Indoch.		Nat. Am.		Pac. Isl.		White		Total		Rates per 100		
	M	F	M	F	M	F	M	F	M	F	M	F	M	F	M	F	M	F	All	M	F
Dropout Counts	7	0	0			0	8	14	0	0			0	0	9	14	23		3.2	5.4	4.3
	8	1	0			0	7	4		0		0	0	8	4	12		2.7	1.6	2.2	
	9	1	2	0		0	9	11			0		1	2	11	15	26		10.0	16.9	13.1
Totals (Grades 7-9)		2	2	0		1	24	29	0	0	0	0	0	0	28	33	61		4.1	5.5	4.7
Ethnic Totals		4		0		1		53		0		0		3							

Rates by Grade

Grade	Afr. Am.	Asian	Filipino	Hispanic	Indoch.	Nat. Am.	Pac. Isl.	White
7	0.0		100.0	4.5	0.0			0.0
8	3.0		0.0	2.2	0.0		0.0	0.0
9	20.0	0.0	0.0	11.3		0.0		100.0



# San Diego City Schools

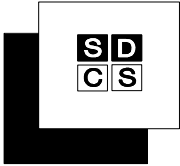
## 2003-2004 Dropout Counts and Rates by Grade Level, Ethnicity, and Gender

### MONTGOMERY (316)

Grade	Afr. Am.		Asian		Filipino		Hispanic		Indoch.		Nat. Am.		Pac. Isl.		White		Total			Rates per 100		
	M	F	M	F	M	F	M	F	M	F	M	F	M	F	M	F	M	F	All	M	F	Total
Dropout Counts	7	0	0	0	0	0	1	1	1	1	0	0	0	0	0	0	2	2	4	1.5	1.7	1.6
	8	1	0	0	0	0	2	1	0	0	0	0	0	0	1	0	4	1	5	3.1	0.7	1.9
Totals (Grades 7-8)		1	0	0	0	0	3	2	1	1	0	0	0	0	1	0	6	3	9	2.3	1.2	1.7
Ethnic Totals		1		0		0	5		2		0		0		1							

### Rates by Grade

Grade	Afr. Am.	Asian	Filipino	Hispanic	Indoch.	Nat. Am.	Pac. Isl.	White
7	0.0	0.0	0.0	1.7	3.9	0.0	0.0	0.0
8	2.7	0.0	0.0	2.5	0.0	0.0	0.0	3.7



# San Diego City Schools

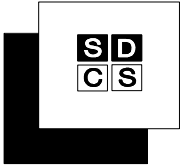
## 2003-2004 Dropout Counts and Rates by Grade Level, Ethnicity, and Gender

### MUIRLANDS (317)

Grade	Afr. Am.		Asian		Filipino		Hispanic		Indoch.		Nat. Am.		Pac. Isl.		White		Total			Rates per 100			
	M	F	M	F	M	F	M	F	M	F	M	F	M	F	M	F	M	F	All	M	F	Total	
Dropout Counts	7	0	0	0	0	0	0	0	0	0	0	0	0	0	0	0	0	0	0	0	0.0	0.0	0.0
	8	0	0	0	0	0	0	0	0	0	0	0	0	0	0	0	0	0	0	0.0	0.0	0.0	
Totals (Grades 7-8)		0	0	0	0	0	0	0	0	0	0	0	0	0	0	0	0	0	0	0.0	0.0	0.0	
Ethnic Totals		0		0		0		0		0		0		0		0							

### Rates by Grade

Grade	Afr. Am.	Asian	Filipino	Hispanic	Indoch.	Nat. Am.	Pac. Isl.	White
7	0.0	0.0	0.0	0.0	0.0	0.0	0.0	0.0
8	0.0	0.0	0.0	0.0	0.0	0.0	0.0	0.0



# San Diego City Schools

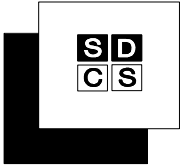
## 2003-2004 Dropout Counts and Rates by Grade Level, Ethnicity, and Gender

O'FARRELL (319)

Grade	Afr. Am.		Asian		Filipino		Hispanic		Indoch.		Nat. Am.		Pac. Isl.		White		Total			Rates per 100		
	M	F	M	F	M	F	M	F	M	F	M	F	M	F	M	F	M	F	All	M	F	Total
Dropout Counts	7	6	5	0	1	1	3	2	0	0	0	0	0	0	0	1	10	9	19	3.6	3.5	3.6
	8	5	3	0	0	6	0	2	0	1	0	0	0	0	1	5	13	18	1.9	5.2	3.5	
Totals (Grades 7-8)		11	8	0	0	1	7	3	4	0	1	0	0	0	0	2	15	22	37	2.8	4.4	3.6
Ethnic Totals		19		0		8		7		1		0		0		2						

Rates by Grade

Grade	Afr. Am.	Asian	Filipino	Hispanic	Indoch.	Nat. Am.	Pac. Isl.	White
7	6.5	0.0	1.5	2.9	0.0	0.0	0.0	5.0
8	5.4	0.0	3.9	1.3	3.7	0.0	0.0	5.0



# San Diego City Schools

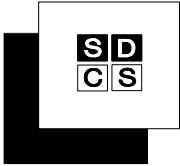
## 2003-2004 Dropout Counts and Rates by Grade Level, Ethnicity, and Gender

### PACIFIC BEACH (320)

Grade	Afr. Am.		Asian		Filipino		Hispanic		Indoch.		Nat. Am.		Pac. Isl.		White		Total			Rates per 100		
	M	F	M	F	M	F	M	F	M	F	M	F	M	F	M	F	All	M	F	Total		
Dropout Counts	7	0	0	0	0	0	0	0	0	0	0	0	0	0	1	0	1	0	1	0.6	0.0	0.3
	8	0	0	0	0	0	0	0	0	0	0	0	0	0	0	0	0	0	0.0	0.0	0.0	
Totals (Grades 7-8)		0	0	0	0	0	0	0	0	0	0	0	0	0	1	0	1	0	0.3	0.0	0.2	
Ethnic Totals		0		0		0		0		0		0		0	1							

### Rates by Grade

Grade	Afr. Am.	Asian	Filipino	Hispanic	Indoch.	Nat. Am.	Pac. Isl.	White
7	0.0	0.0	0.0	0.0	0.0	0.0	0.0	1.2
8	0.0		0.0	0.0	0.0	0.0	0.0	0.0



# San Diego City Schools

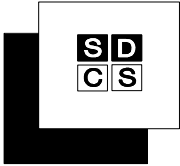
## 2003-2004 Dropout Counts and Rates by Grade Level, Ethnicity, and Gender

### PERSHING (321)

Grade	Afr. Am.		Asian		Filipino		Hispanic		Indoch.		Nat. Am.		Pac. Isl.		White		Total			Rates per 100		
	M	F	M	F	M	F	M	F	M	F	M	F	M	F	M	F	M	F	All	M	F	Total
Dropout Counts	7	0	1	0	0	0	0	0	0	0	0	0	0	0	0	0	0	1	1	0.0	0.7	0.3
	8	0	1	0	0	0	0	1	0	0	0	0	0	0	0	1	0	3	3	0.0	2.0	0.9
Totals (Grades 7-8)		0	2	0	0	0	0	1	0	0	0	0	0	0	0	1	0	4	4	0.0	1.3	0.6
Ethnic Totals		2		0		0		1	0		0		0		1							

### Rates by Grade

Grade	Afr. Am.	Asian	Filipino	Hispanic	Indoch.	Nat. Am.	Pac. Isl.	White
7	2.9	0.0	0.0	0.0	0.0	0.0		0.0
8	3.3	0.0	0.0	1.1	0.0	0.0	0.0	0.6



# San Diego City Schools

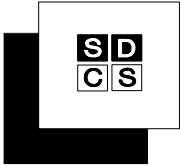
## 2003-2004 Dropout Counts and Rates by Grade Level, Ethnicity, and Gender

### ROOSEVELT (324)

Grade	Afr. Am.		Asian		Filipino		Hispanic		Indoch.		Nat. Am.		Pac. Isl.		White		Total			Rates per 100			
	M	F	M	F	M	F	M	F	M	F	M	F	M	F	M	F	M	F	All	M	F	Total	
Dropout Counts	7	2	4	0	0	0	0	4	4	0	0	0	0	0	0	1	0	7	8	15	3.3	4.2	3.7
	8	1	2	0	0	0	0	3	0	0	0	0	0	0	0	2	2	4	4	8	1.9	2.0	1.9
Totals (Grades 7-8)		3	6	0	0	0	0	7	4	0	0	0	0	0	0	2	11	12	23	2.6	3.1	2.8	
Ethnic Totals		9		0		0		11		0		0		0		3							

### Rates by Grade

Grade	Afr. Am.	Asian	Filipino	Hispanic	Indoch.	Nat. Am.	Pac. Isl.	White
7	9.2	0.0	0.0	3.4	0.0	0.0	0.0	1.4
8	3.8	0.0	0.0	1.2	0.0	0.0		2.9



# San Diego City Schools

## 2003-2004 Dropout Counts and Rates by Grade Level, Ethnicity, and Gender

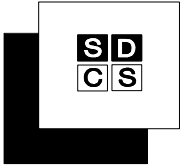
### SOJOURNER TRUTH (787)

Grade	Afr. Am.		Asian		Filipino		Hispanic		Indoch.		Nat. Am.		Pac. Isl.		White		Total			Rates per 100		
	M	F	M	F	M	F	M	F	M	F	M	F	M	F	M	F	All	M	F	Total		
Dropout Counts	7	5	1	0										0			5	1	6	83.3	12.5	42.9
Totals (Grades 7-8)	8	7	4											0			12	5	17	350.0	83.3	150.0
Ethnic Totals		12	5	0										0			12	6	18	150.0	42.9	81.8

### Rates by Grade

Grade	Afr. Am.	Asian	Filipino	Hispanic	Indoch.	Nat. Am.	Pac. Isl.	White
7	50.0	0.0					0.0	
8	137.5							





# San Diego City Schools

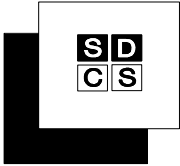
## 2003-2004 Dropout Counts and Rates by Grade Level, Ethnicity, and Gender

STANDLEY (325)

Grade	Afr. Am.		Asian		Filipino		Hispanic		Indoch.		Nat. Am.		Pac. Isl.		White		Total			Rates per 100		
	M	F	M	F	M	F	M	F	M	F	M	F	M	F	M	F	M	F	All	M	F	Total
Dropout Counts	7	0	0	0	0	0	1	0	0	0	0	0	1	1	2	1	3			0.9	0.5	0.7
	8	1	0	0	0	0	1	1	0	0	0	0	0	1	2	2	4			0.8	0.8	0.8
Totals (Grades 7-8)		1	0	0	0	0	2	1	0	0	0	0	1	2	4	3	7			0.9	0.7	0.8
Ethnic Totals		1		0		0	3		0		0		3									

Rates by Grade

Grade	Afr. Am.	Asian	Filipino	Hispanic	Indoch.	Nat. Am.	Pac. Isl.	White
7	0.0	0.0	0.0	0.8	0.0	0.0		1.0
8	2.6	0.0	0.0	1.5	0.0	0.0	0.0	0.4



# San Diego City Schools

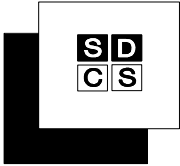
## 2003-2004 Dropout Counts and Rates by Grade Level, Ethnicity, and Gender

### TAFT (326)

Grade	Afr. Am.		Asian		Filipino		Hispanic		Indoch.		Nat. Am.		Pac. Isl.		White		Total			Rates per 100			
	M	F	M	F	M	F	M	F	M	F	M	F	M	F	M	F	M	F	All	M	F	Total	
Dropout Counts	7	1	1	0	0	0	0	0	0	1	0	0	0	0	0	0	0	2	1	3	1.3	0.8	1.1
	8	1	0	0	0	0	1	0	0	0	0	0	0	0	0	0	2	0	2	1.6	0.0	0.8	
Totals (Grades 7-8)		2	1	0	0	0	0	1	0	1	0	0	0	0	0	0	4	1	5	1.4	0.4	0.9	
Ethnic Totals		3		0		0		1		1		0		0		0							

### Rates by Grade

Grade	Afr. Am.	Asian	Filipino	Hispanic	Indoch.	Nat. Am.	Pac. Isl.	White
7	3.4	0.0	0.0	0.0	4.3	0.0	0.0	0.0
8	1.8	0.0	0.0	1.2	0.0	0.0		0.0



# San Diego City Schools

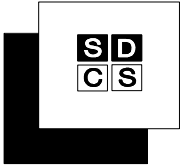
## 2003-2004 Dropout Counts and Rates by Grade Level, Ethnicity, and Gender

### TUBMAN VILLAGE (214)

Grade	Afr. Am.		Asian		Filipino		Hispanic		Indoch.		Nat. Am.		Pac. Isl.		White		Total			Rates per 100			
	M	F	M	F	M	F	M	F	M	F	M	F	M	F	M	F	M	F	All	M	F	Total	
Dropout Counts	7	0	0				0	0	0				0	1	0	1	0	1	0	1	5.0	0.0	2.9
	8	0	0	0			0	0	0				0	0	0	0	0	0	0	0.0	0.0	0.0	
Totals (Grades 7-8)		0	0	0			0	0	0				0	1	0	1	0	1	0	1	2.6	0.0	1.4
Ethnic Totals		0		0			0		0				0	1									

### Rates by Grade

Grade	Afr. Am.	Asian	Filipino	Hispanic	Indoch.	Nat. Am.	Pac. Isl.	White
7	0.0			0.0	0.0		0.0	12.5
8	0.0	0.0		0.0				0.0



# San Diego City Schools

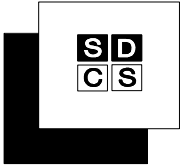
## 2003-2004 Dropout Counts and Rates by Grade Level, Ethnicity, and Gender

### WANGENHEIM (328)

Grade	Afr. Am.		Asian		Filipino		Hispanic		Indoch.		Nat. Am.		Pac. Isl.		White		Total			Rates per 100		
	M	F	M	F	M	F	M	F	M	F	M	F	M	F	M	F	All	M	F	Total		
Dropout Counts	7	0	0	0	0	1	0	0	0	0	0	0	0	0	2	0	2	1	3	0.8	0.4	0.6
	8	0	0	1	0	0	0	0	0	0	0	0	0	0	1	0	2	0	2	0.9	0.0	0.4
Totals (Grades 7-8)		0	0	1	0	1	0	0	0	0	0	0	0	0	3	0	4	1	5	0.9	0.2	0.5
Ethnic Totals		0		1		1		0		0		0		0	3							

### Rates by Grade

Grade	Afr. Am.	Asian	Filipino	Hispanic	Indoch.	Nat. Am.	Pac. Isl.	White
7	0.0	0.0	0.9	0.0	0.0	0.0	0.0	1.6
8	0.0	4.5	0.0	0.0	0.0	0.0	0.0	0.8



# San Diego City Schools

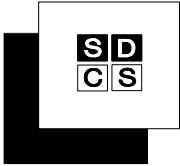
## 2003-2004 Dropout Counts and Rates by Grade Level, Ethnicity, and Gender

**WILSON (329)**

Grade	Afr. Am.		Asian		Filipino		Hispanic		Indoch.		Nat. Am.		Pac. Isl.		White		Total		Rates per 100			
	M	F	M	F	M	F	M	F	M	F	M	F	M	F	M	F	All	M	F	Total		
Dropout Counts	7	1	3	0	0	0	6	8	0	0			0	0	4	1	11	12	23	5.3	6.5	5.9
	8	6	2	0	0	0	4	7	1	1	0	0	0	0	1	0	12	11	23	5.4	6.1	5.8
Totals (Grades 7-8)	7	7	5	0	0	0	10	15	1	1	0	0	0	0	5	1	23	23	46	5.4	6.3	5.8
Ethnic Totals		12		0		0	25		2		1		0		6							

**Rates by Grade**

Grade	Afr. Am.	Asian	Filipino	Hispanic	Indoch.	Nat. Am.	Pac. Isl.	White
7	7.3	0.0	0.0	5.1	0.0		0.0	29.4
8	14.5	0.0	0.0	4.2	4.3	100.0	0.0	3.6



# San Diego City Schools

## 2003-2004 Dropout Counts and Rates by Grade Level, Ethnicity, and Gender

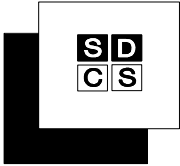
### CLAIREMONT (332)

Grade	Afr. Am.		Asian		Filipino		Hispanic		Indoch.		Nat. Am.		Pac. Isl.		White		Total		All	Rates per 100		
	M	F	M	F	M	F	M	F	M	F	M	F	M	F	M	F	M	F		Total		
Dropout Counts	9	0	0	0	0	0	2	0	0	0	0	0	0	0	0	0	2	0	2	0.8	0.0	0.4
	10	0	0	0	0	0	1	2	0	0	0	0	0	0	0	1	3	4	0.6	1.6	1.1	
	11	0	0	0	0	0	5	3	0	0	0	0	0	0	0	5	3	8	2.6	1.8	2.3	
	12	0	0	0	0	0	4	2	1	0	0	0	0	0	5	2	12	6.8	1.7	4.6		
Totals (Grades 9-12)		0	0	0	0	0	12	7	1	0	0	0	0	0	5	1	18	8	26	2.3	1.2	1.8
Ethnic Totals		0	0	0	0	0	19	1	0	0	0	0	0	6								

Grades	Afr. Am.	Asian	Filipino	Hispanic	Indoch.	Nat. Am.	Pac. Isl.	White	M	F	Total
9-12	0.0	0.0	0.0	3.1	2.8	0.0	0.0	0.9	2.3	1.2	1.8
10-12	0.0	0.0	0.0	4.2	3.8	0.0	0.0	1.3	3.1	1.7	2.4

Grade	Afr. Am.	Asian	Filipino	Hispanic	Indoch.	Nat. Am.	Pac. Isl.	White
9	0.0	0.0	0.0	1.0	0.0	0.0	0.0	0.0
10	0.0	0.0	0.0	1.9	0.0	0.0	0.0	0.6
11	0.0	0.0	0.0	5.5	0.0	0.0	0.0	0.0
12	0.0	0.0	0.0	5.7	12.5	0.0	0.0	3.9

Grades	Afr. Am.	Asian	Filipino	Hispanic	Indoch.	Nat. Am.	Pac. Isl.	White	M	F	Total
9-12	0.0	0.0	0.0	13.4	12.5	0.0	0.0	4.5	10.5	5.1	8.2
10-12	0.0	0.0	0.0	12.6	12.5	0.0	0.0	4.5	9.8	5.1	7.8



# San Diego City Schools

## 2003-2004 Dropout Counts and Rates by Grade Level, Ethnicity, and Gender

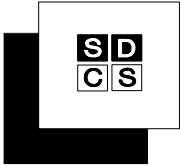
### CORTEZ HILL (323)

Grade	Afr. Am.		Asian		Filipino		Hispanic		Indoch.		Nat. Am.		Pac. Isl.		White		Total			Rates per 100		
	M	F	M	F	M	F	M	F	M	F	M	F	M	F	M	F	M	F	All	M	F	Total
Dropout Counts	9	0	0				0	0							0	0	0	0	0	0.0	0.0	0.0
	10	0	0	0	0		0	0	0						0	0	0	0	0	0.0	0.0	0.0
	11	0	0				0	0							0	0	0	0	0	0.0	0.0	0.0
	12		1			0	0	0							0	0	1	1	2	20.0	12.5	15.4
Totals (Grades 9-12)		1	1	0	0	0	0	0	0						0	0	1	1	2	2.3	1.6	1.9
Ethnic Totals		2		0	0	0	0	0	0						0							

Grades	Afr. Am.	Asian	Filipino	Hispanic	Indoch.	Nat. Am.	Pac. Isl.	White	Rates per 100		
									M	F	Total
9-12	8.0	0.0	0.0	0.0	0.0			0.0	2.3	1.6	1.9
10-12	11.8	0.0	0.0	0.0	0.0			0.0	3.1	2.1	2.5

Grade	Afr. Am.	Asian	Filipino	Hispanic	Indoch.	Nat. Am.	Pac. Isl.	White
9	0.0			0.0				0.0
10	0.0	0.0	0.0	0.0	0.0			0.0
11	0.0			0.0				0.0
12	100.0		0.0	0.0				0.0

Grades	Afr. Am.	Asian	Filipino	Hispanic	Indoch.	Nat. Am.	Pac. Isl.	White	Rates per 100		
									M	F	Total
9-12	100.0	0.0	0.0	0.0	0.0			0.0	20.0	12.5	15.4
10-12	100.0	0.0	0.0	0.0	0.0			0.0	20.0	12.5	15.4



# San Diego City Schools

## 2003-2004 Dropout Counts and Rates by Grade Level, Ethnicity, and Gender

### CRAWFORD (334)

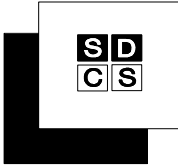
Grade	Afr. Am.		Asian		Filipino		Hispanic		Indoch.		Nat. Am.		Pac. Isl.		White		Total			Rates per 100		
	M	F	M	F	M	F	M	F	M	F	M	F	M	F	M	F	M	F	All	M	F	Total
Dropout Counts	9	6	4	0	0	1		14	12	1	0	0		1	3	2	26	18	44	8.6	7.8	8.2
	10	5	2	0	0	0	0	11	9	0	0	0	0	1	0	17	11	28	7.0	5.9	6.5	
	11	7	5	1	0	0	1	5	4	0	0	0	0	4	0	17	10	27	7.3	5.2	6.3	
	12	2	3	1	0	0	1	4	2	1	0	0	0	4	0	12	6	18	8.9	3.5	5.9	
Totals (Grades 9-12)		20	14	2	0	1	2	34	27	2	0	0	0	1	0	72	45	117	7.9	5.7	6.9	
Ethnic Totals		34		2		3		61		2		0		1		14						

Grades	Afr. Am.	Asian	Filipino	Hispanic	Indoch.	Nat. Am.	Pac. Isl.	White	Rates per 100		
									M	F	Total
9-12	7.3	5.9	13.0	8.7	0.6	0.0	7.7	13.6	7.9	5.7	6.9
10-12	7.1	8.7	10.5	8.2	0.4	0.0	0.0	12.0	7.5	4.9	6.3

Grade	Afr. Am.	Asian	Filipino	Hispanic	Indoch.	Nat. Am.	Pac. Isl.	White
9	7.8	0.0	25.0	9.4	1.3	0.0	20.0	17.9
10	5.4	0.0	0.0	11.3	0.0	0.0	0.0	4.8
11	9.4	12.5	14.3	6.4	0.0	0.0	0.0	12.9
12	6.0	14.3	14.3	5.6	1.4	0.0	0.0	17.4

Grades	Afr. Am.	Asian	Filipino	Hispanic	Indoch.	Nat. Am.	Pac. Isl.	White	Rates per 100		
									M	F	Total
9-12	25.8	25.0	44.9	28.9	2.6	0.0	20.0	43.7	28.2	20.6	24.4
10-12	19.5	25.0	26.5	21.6	1.4	0.0	0.0	31.5	21.4	13.9	17.6





# San Diego City Schools

## 2003-2004 Dropout Counts and Rates by Grade Level, Ethnicity, and Gender

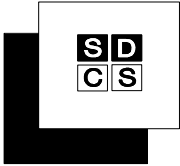
HENRY (336)

Grade	Afr. Am.		Asian		Filipino		Hispanic		Indoch.		Nat. Am.		Pac. Isl.		White		Total			Rates per 100		
	M	F	M	F	M	F	M	F	M	F	M	F	M	F	M	F	All	M	F	Total		
Dropout Counts	9	0	0	0	0	0	3	0	0	0	0	0	0	0	0	1	3	1	4	0.8	0.3	0.5
	10	1	0	0	0	0	2	0	1	0	0	0	0	0	0	0	4	0	4	1.3	0.0	0.6
	11	0	0	0	0	0	1	1	0	0	0	0	0	0	0	1	1	2	0.4	0.4	0.4	
	12	0	0	0	0	0	3	3	0	0	0	0	0	0	3	4	6	7	13	2.6	3.0	2.8
Totals (Grades 9-12)		1	0	0	0	0	9	4	1	0	0	0	0	0	3	5	14	9	23	1.1	0.8	1.0
Ethnic Totals		1		0		0	13		1		0		0		8							

Grades	Afr. Am.	Asian	Filipino	Hispanic	Indoch.	Nat. Am.	Pac. Isl.	White	Rates per 100		
									M	F	Total
9-12	0.4	0.0	0.0	1.9	0.8	0.0	0.0	0.7	1.1	0.8	1.0
10-12	0.5	0.0	0.0	2.3	1.3	0.0	0.0	0.8	1.3	0.9	1.1

Grade	Afr. Am.	Asian	Filipino	Hispanic	Indoch.	Nat. Am.	Pac. Isl.	White
9	0.0	0.0	0.0	1.2	0.0	0.0	0.0	0.3
10	1.3	0.0	0.0	1.1	2.9	0.0	0.0	0.0
11	0.0	0.0	0.0	1.4	0.0	0.0	0.0	0.0
12	0.0	0.0	0.0	5.2	0.0	0.0	0.0	2.7

Grades	Afr. Am.	Asian	Filipino	Hispanic	Indoch.	Nat. Am.	Pac. Isl.	White	Rates per 100		
									M	F	Total
9-12	1.3	0.0	0.0	8.7	2.9	0.0	0.0	3.0	4.9	3.6	4.3
10-12	1.3	0.0	0.0	7.6	2.9	0.0	0.0	2.7	4.2	3.3	3.7



# San Diego City Schools

## 2003-2004 Dropout Counts and Rates by Grade Level, Ethnicity, and Gender

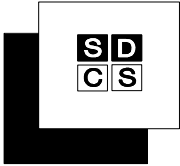
### HIGH TECH (339)

Grade	Afr. Am.		Asian		Filipino		Hispanic		Indoch.		Nat. Am.		Pac. Isl.		White		Total			Rates per 100		
	M	F	M	F	M	F	M	F	M	F	M	F	M	F	M	F	All	M	F	Total		
Dropout Counts	9	0	0	0	0	0	0	0	0	0	0	0	0	0	0	0	0	0	0	0.0	0.0	0.0
	10	0	0	0	0	0	0	0	0	0	0	0	0	0	0	0	0	0	0.0	0.0	0.0	
	11	0	0	0	0	0	0	0	0	0	0	0	0	0	0	0	0	0	0.0	0.0	0.0	
	12	0	0	0	0	0	0	0	0	0	0	0	0	1	0	1	0	1	1.6	0.0	0.9	
Totals (Grades 9-12)		0	0	0	0	0	0	0	0	0	0	0	0	1	0	1	0	1	0.4	0.0	0.2	
Ethnic Totals		0		0		0		0		0		0		1								

Grades	Afr. Am.	Asian	Filipino	Hispanic	Indoch.	Nat. Am.	Pac. Isl.	White	Rates per 100		
									M	F	Total
9-12	0.0	0.0	0.0	0.0	0.0	0.0	0.0	0.5	0.4	0.0	0.2
10-12	0.0	0.0	0.0	0.0	0.0	0.0	0.0	0.6	0.5	0.0	0.3

Grade	Afr. Am.	Asian	Filipino	Hispanic	Indoch.	Nat. Am.	Pac. Isl.	White
9	0.0	0.0	0.0	0.0	0.0	0.0	0.0	0.0
10	0.0	0.0	0.0	0.0	0.0	0.0	0.0	0.0
11	0.0	0.0	0.0	0.0	0.0	0.0	0.0	0.0
12	0.0	0.0	0.0	0.0	0.0	0.0	0.0	2.3

Grades	Afr. Am.	Asian	Filipino	Hispanic	Indoch.	Nat. Am.	Pac. Isl.	White	Rates per 100		
									M	F	Total
9-12	0.0	0.0	0.0	0.0	0.0	0.0	0.0	2.3	1.6	0.0	0.9
10-12	0.0	0.0	0.0	0.0	0.0	0.0	0.0	2.3	1.6	0.0	0.9



# San Diego City Schools

## 2003-2004 Dropout Counts and Rates by Grade Level, Ethnicity, and Gender

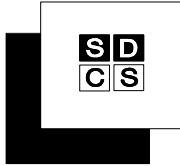
HOOVER (338)

Grade	Afr. Am.		Asian		Filipino		Hispanic		Indoch.		Nat. Am.		Pac. Isl.		White		Total		Rates per 100			
	M	F	M	F	M	F	M	F	M	F	M	F	M	F	M	F	All	M	F	Total		
Dropout Counts	9	6	1	0	0	0	11	13	1	0			0	0	0	5	18	19	37	5.0	5.4	5.2
	10	0	0	0	0	0	15	11	1	1			0		0	1	16	13	29	4.9	4.5	4.7
	11	2	2	0	0	0	14	8	1	1	0	0	0	0	2	0	19	11	30	8.1	4.1	6.0
	12	3	0	0	0	0	10	8	3	0	0	0	0	4	6	20	14	34	12.4	8.2	10.2	
Totals (Grades 9-12)		11	3	0	0	0	50	40	6	2	0	0	0	0	6	12	73	57	130	6.7	5.3	6.0
Ethnic Totals		14		0		0	90		8		0		0		18							

Grades	Afr. Am.	Asian	Filipino	Hispanic	Indoch.	Nat. Am.	Pac. Isl.	White	M	F	Total
9-12	4.5	0.0	0.0	6.4	2.8	0.0	0.0	17.5	6.7	5.3	6.0
10-12	3.6	0.0	0.0	7.2	3.3	0.0	0.0	18.3	7.6	5.2	6.4

Grade	Afr. Am.	Asian	Filipino	Hispanic	Indoch.	Nat. Am.	Pac. Isl.	White
9	6.0	0.0	0.0	5.0	1.5		0.0	15.6
10	0.0	0.0	0.0	6.1	2.5		0.0	4.3
11	4.9	0.0	0.0	7.1	3.1	0.0	0.0	7.7
12	6.4	0.0	0.0	9.9	4.3	0.0	0.0	45.5

Grades	Afr. Am.	Asian	Filipino	Hispanic	Indoch.	Nat. Am.	Pac. Isl.	White	M	F	Total
9-12	16.3	0.0	0.0	25.3	10.9	0.0	0.0	59.4	27.3	20.5	23.8
10-12	11.0	0.0	0.0	21.4	9.6	0.0	0.0	51.8	23.5	15.9	19.6



# San Diego City Schools

## 2003-2004 Dropout Counts and Rates by Grade Level, Ethnicity, and Gender

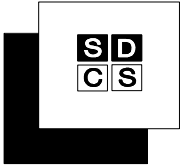
**KEARNY (340)**

Grade	Afr. Am.		Asian		Filipino		Hispanic		Indoch.		Nat. Am.		Pac. Isl.		White		Total			Rates per 100		
	M	F	M	F	M	F	M	F	M	F	M	F	M	F	M	F	All	M	F	Total		
<b>Dropout Counts</b>																						
9	0	0	0	1	0	0	0	0	1	0	0	0	0	0	0	0	1	1	2	0.4	0.5	0.4
10	0	0	0	0	0	0	0	0	0	0	0	0	0	0	1	0	1	0	1	0.4	0.0	0.2
11	0	0	0	0	0	0	0	0	0	0	0	0	0	0	2	0	2	0	2	0.9	0.0	0.5
12	2	2	0	0	0	0	1	1	1	0	0	0	0	0	3	1	7	4	11	4.3	2.3	3.3
<b>Totals (Grades 9-12)</b>	2	2	0	1	0	0	1	1	2	0	0	0	0	0	6	1	11	5	16	1.2	0.7	1.0
<b>Ethnic Totals</b>	4		1		0		2		2		0		0		7							

Grades	Afr. Am.	Asian	Filipino	Hispanic	Indoch.	Nat. Am.	Pac. Isl.	White	M	F	Total
9-12	1.2	1.6	0.0	0.4	0.7	0.0	0.0	2.5	1.2	0.7	1.0
10-12	1.6	0.0	0.0	0.5	0.5	0.0	0.0	3.4	1.6	0.7	1.2

Grade	Afr. Am.	Asian	Filipino	Hispanic	Indoch.	Nat. Am.	Pac. Isl.	White
9	0.0	5.6	0.0	0.0	1.4	0.0	0.0	0.0
10	0.0	0.0	0.0	0.0	0.0	0.0	0.0	1.4
11	0.0	0.0	0.0	0.0	0.0	0.0	0.0	2.5
12	5.3	0.0	0.0	2.1	1.4	0.0	0.0	7.1

Grades	Afr. Am.	Asian	Filipino	Hispanic	Indoch.	Nat. Am.	Pac. Isl.	White	M	F	Total
9-12	5.3	5.6	0.0	2.1	2.8	0.0	0.0	10.8	6.0	2.8	4.4
10-12	5.3	0.0	0.0	2.1	1.4	0.0	0.0	10.8	5.6	2.3	4.0



# San Diego City Schools

## 2003-2004 Dropout Counts and Rates by Grade Level, Ethnicity, and Gender

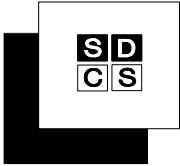
LA JOLLA (342)

Grade	Afr. Am.		Asian		Filipino		Hispanic		Indoch.		Nat. Am.		Pac. Isl.		White		Total		Rates per 100				
	M	F	M	F	M	F	M	F	M	F	M	F	M	F	M	F	All	M	F	Total			
Dropout Counts	9	0	0	0	0	0	1	0	0	0	0	0	0	0	0	0	1	0	1	0.5	0.0	0.2	
	10	0	0	0	0	0	0	0	0	0	0	0	0	0	0	0	0	0	0.0	0.0	0.0		
	11	0	0	0	0	0	2	0	0	0	0	0	0	0	0	0	2	0	2	0.9	0.0	0.5	
	12	0	0	0	0	0	2	0	0	0	0	0	0	1	2	3	2	5	1.6	1.1	1.4		
Totals (Grades 9-12)		0	0	0	0	0	5	0	0	0	0	0	0	0	0	1	2	6	2	8	0.7	0.2	0.5
Ethnic Totals		0	0	0	0	0	5	0	0	0	0	0	0	3									

Grades	Afr. Am.	Asian	Filipino	Hispanic	Indoch.	Nat. Am.	Pac. Isl.	White	Rates per 100		
									M	F	Total
9-12	0.0	0.0	0.0	1.2	0.0	0.0	0.0	0.3	0.7	0.2	0.5
10-12	0.0	0.0	0.0	1.4	0.0	0.0	0.4	0.8	0.3	0.6	

Grade	Afr. Am.	Asian	Filipino	Hispanic	Indoch.	Nat. Am.	Pac. Isl.	White
9	0.0	0.0	0.0	0.8	0.0	0.0	0.0	0.0
10	0.0	0.0	0.0	0.0	0.0	0.0	0.0	0.0
11	0.0	0.0	0.0	1.9	0.0	0.0	0.0	0.0
12	0.0	0.0	0.0	2.9	0.0	0.0	0.0	1.2

Grades	Afr. Am.	Asian	Filipino	Hispanic	Indoch.	Nat. Am.	Pac. Isl.	White	Rates per 100		
									M	F	Total
9-12	0.0	0.0	0.0	5.5	0.0	0.0	0.0	1.2	2.9	1.1	2.1
10-12	0.0	0.0	0.0	4.8	0.0	0.0	0.0	1.2	2.5	1.1	1.8



# San Diego City Schools

## 2003-2004 Dropout Counts and Rates by Grade Level, Ethnicity, and Gender

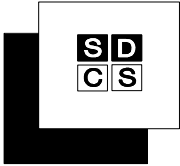
**MADISON (346)**

Grade	Afr. Am.		Asian		Filipino		Hispanic		Indoch.		Nat. Am.		Pac. Isl.		White		Total		Rates per 100				
	M	F	M	F	M	F	M	F	M	F	M	F	M	F	M	F	All	M	F	Total			
Dropout Counts	9	0	0	0	0	0	0	0	0	0	0	0	0	0	0	1	0	1	0	1	0.5	0.0	0.2
	10	0	0	0	0	0	2	1	0	0	0	0	0	0	0	0	0	2	1	3	0.9	0.5	0.7
	11	0	0	0	0	0	2	0	0	0	0	0	0	0	0	0	0	2	0	2	1.0	0.0	0.5
	12	1	0	0	0	0	3	1	0	0	0	0	0	0	2	0	6	1	7	4.3	0.7	2.5	
Totals (Grades 9-12)		1	0	0	0	0	7	2	0	0	0	0	0	0	3	0	11	2	13	1.5	0.3	0.9	
Ethnic Totals		1		0		0	9		0		0		0		3								

Grades	Afr. Am.	Asian	Filipino	Hispanic	Indoch.	Nat. Am.	Pac. Isl.	White	Rates per 100		
									M	F	Total
9-12	0.5	0.0	0.0	1.5	0.0	0.0	0.0	0.7	1.5	0.3	0.9
10-12	0.7	0.0	0.0	2.1	0.0	0.0	0.0	0.6	1.8	0.4	1.1

Grade	Afr. Am.	Asian	Filipino	Hispanic	Indoch.	Nat. Am.	Pac. Isl.	White
9	0.0	0.0	0.0	0.0	0.0	0.0	0.0	0.8
10	0.0	0.0	0.0	1.8	0.0	0.0	0.0	0.0
11	0.0	0.0	0.0	1.4	0.0	0.0	0.0	0.0
12	2.3	0.0	0.0	3.8	0.0	0.0	0.0	2.4

Grades	Afr. Am.	Asian	Filipino	Hispanic	Indoch.	Nat. Am.	Pac. Isl.	White	Rates per 100		
									M	F	Total
9-12	2.3	0.0	0.0	6.8	0.0	0.0	0.0	3.2	6.6	1.3	4.0
10-12	2.3	0.0	0.0	6.8	0.0	0.0	0.0	2.4	6.2	1.3	3.8



# San Diego City Schools

## 2003-2004 Dropout Counts and Rates by Grade Level, Ethnicity, and Gender

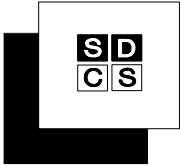
### MIRA MESA (349)

Grade	Afr. Am.		Asian		Filipino		Hispanic		Indoch.		Nat. Am.		Pac. Isl.		White		Total		Rates per 100			
	M	F	M	F	M	F	M	F	M	F	M	F	M	F	M	F	All	M	F	Total		
Dropout Counts	9	0	0	1	0	0	0	0	0	0	0	0	0	0	0	0	1	0	1	0.3	0.0	0.1
	10	0	0	1	0	0	1	1	0	0	0	0	0	0	0	0	2	1	3	0.5	0.3	0.4
	11	0	0	0	0	1	0	3	0	0	0	0	0	0	1	4	1	5	1.3	0.3	0.8	
	12	1	0	0	0	4	3	1	0	1	0	0	0	0	4	1	11	4	15	3.8	1.7	2.8
Totals (Grades 9-12)		1	0	2	0	5	3	5	1	1	0	0	0	0	4	2	18	6	24	1.3	0.5	0.9
Ethnic Totals		1		2		8		6		1		0		0		6						

Grades	Afr. Am.	Asian	Filipino	Hispanic	Indoch.	Nat. Am.	Pac. Isl.	White	Rates per 100		
									M	F	Total
9-12	0.4	1.6	1.0	2.0	0.3	0.0	0.0	0.9	1.3	0.5	0.9
10-12	0.5	1.1	1.3	3.0	0.4	0.0	0.0	1.3	1.7	0.7	1.3

Grade	Afr. Am.	Asian	Filipino	Hispanic	Indoch.	Nat. Am.	Pac. Isl.	White
9	0.0	3.0	0.0	0.0	0.0	0.0	0.0	0.0
10	0.0	3.0	0.0	2.1	0.0	0.0	0.0	0.0
11	0.0	0.0	0.5	4.8	0.0	0.0	0.0	0.6
12	2.0	0.0	3.6	2.3	1.6		0.0	3.5

Grades	Afr. Am.	Asian	Filipino	Hispanic	Indoch.	Nat. Am.	Pac. Isl.	White	Rates per 100		
									M	F	Total
9-12	2.0	6.0	4.1	9.0	1.6	0.0	0.0	4.1	5.8	2.3	4.2
10-12	2.0	3.0	4.1	9.0	1.6	0.0	0.0	4.1	5.5	2.3	4.1



# San Diego City Schools

## 2003-2004 Dropout Counts and Rates by Grade Level, Ethnicity, and Gender

### MISSION BAY (350)

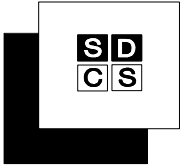
Grade	Afr. Am.		Asian		Filipino		Hispanic		Indoch.		Nat. Am.		Pac. Isl.		White		Total		Rates per 100			
	M	F	M	F	M	F	M	F	M	F	M	F	M	F	M	F	All	M	F	Total		
Dropout Counts	9	3	1	0	0	0	4	1	0	0	0	0	0	0	2	0	9	2	11	3.7	0.9	2.3
	10	1	1	0	0	0	6	2	0	0	0	0	0	0	7	1	14	4	18	5.4	1.8	3.7
	11	4	1	0	0	0	8	2	0	0	0	0	0	4	1	16	4	20	7.5	1.8	4.5	
	12	2	0	1	0	0	3	3	0	0	0	0	0	2	2	8	5	13	4.8	3.1	4.0	
Totals (Grades 9-12)		10	3	1	0	0	21	8	0	0	0	0	0	0	15	4	47	15	62	5.3	1.8	3.6
Ethnic Totals		13		1		0	29		0		0		0	19								

Grades	Afr. Am.	Asian	Filipino	Hispanic	Indoch.	Nat. Am.	Pac. Isl.	White	M	F	Total
9-12	4.3	2.7	0.0	3.7	0.0	0.0	0.0	4.2	5.3	1.8	3.6
10-12	4.3	3.2	0.0	4.4	0.0	0.0	0.0	5.1	5.9	2.1	4.1

Grade	Afr. Am.	Asian	Filipino	Hispanic	Indoch.	Nat. Am.	Pac. Isl.	White
9	4.5	0.0	0.0	2.2	0.0	0.0	0.0	1.6
10	2.7	0.0	0.0	3.6	0.0	0.0	0.0	6.2
11	5.7	0.0	0.0	5.0	0.0	0.0	0.0	4.7
12	4.0	11.1	0.0	4.7	0.0	0.0	0.0	4.2

Grades	Afr. Am.	Asian	Filipino	Hispanic	Indoch.	Nat. Am.	Pac. Isl.	White	M	F	Total
9-12	15.9	11.1	0.0	14.6	0.0	0.0	0.0	15.7	19.8	7.3	13.8
10-12	11.9	11.1	0.0	12.7	0.0	0.0	0.0	14.3	16.7	6.5	11.7





# San Diego City Schools

## 2003-2004 Dropout Counts and Rates by Grade Level, Ethnicity, and Gender

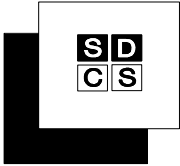
MORSE (352)

Grade	Afr. Am.		Asian		Filipino		Hispanic		Indoch.		Nat. Am.		Pac. Isl.		White		Total		Rates per 100					
	M	F	M	F	M	F	M	F	M	F	M	F	M	F	M	F	M	F	All	M	F	Total		
Dropout Counts	9	7	3	0	0	2	2	6	5	0	0	0	0	0	0	0	3	2	18	12	30	7.2	5.7	6.5
	10	5	2	0	0	4	3	5	4	0	1	0	0	1	0	1	0	16	10	26	3.2	2.4	2.8	
	11	1	3	0	0	7	0	11	4	0	1	0	1	1	1	2	1	22	10	32	4.2	2.3	3.4	
	12	3	1	0	0	7	1	6	4	0	0	0	0	0	1	0	17	6	23	5.0	1.9	3.6		
Totals (Grades 9-12)		16	9	0	0	20	6	28	17	0	2	0	0	2	1	7	3	73	38	111	4.5	2.8	3.7	
Ethnic Totals		25		0		26		45		2		0		3		10								

Grades	Afr. Am.	Asian	Filipino	Hispanic	Indoch.	Nat. Am.	Pac. Isl.	White	Rates per 100		
									M	F	Total
9-12	4.5	0.0	2.0	5.7	1.9	0.0	3.9	6.7	4.5	2.8	3.7
10-12	3.5	0.0	1.9	5.3	2.4	0.0	4.6	3.8	4.1	2.2	3.2

Grade	Afr. Am.	Asian	Filipino	Hispanic	Indoch.	Nat. Am.	Pac. Isl.	White
9	8.1	0.0	2.9	7.5	0.0	0.0	0.0	27.8
10	4.4	0.0	1.8	3.3	3.6	0.0	3.8	2.2
11	2.3	0.0	1.7	6.2	3.1	0.0	6.5	5.9
12	4.2	0.0	2.3	7.8	0.0		0.0	2.9

Grades	Afr. Am.	Asian	Filipino	Hispanic	Indoch.	Nat. Am.	Pac. Isl.	White	Rates per 100		
									M	F	Total
9-12	17.8	0.0	8.4	22.7	6.6	0.0	10.0	35.5	18.3	11.8	15.3
10-12	10.6	0.0	5.7	16.4	6.6	0.0	10.0	10.6	12.0	6.5	9.4



# San Diego City Schools

## 2003-2004 Dropout Counts and Rates by Grade Level, Ethnicity, and Gender

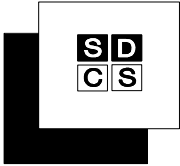
### POINT LOMA (354)

Grade	Afr. Am.		Asian		Filipino		Hispanic		Indoch.		Nat. Am.		Pac. Isl.		White		Total			Rates per 100		
	M	F	M	F	M	F	M	F	M	F	M	F	M	F	M	F	All	M	F	Total		
Dropout Counts	9	1	1	0	0	0	2	3	0	0	0	0	0	0	5	6	8	10	18	2.7	3.6	3.1
	10	0	1	0	0	0	1	2	0	0	0	0	0	0	1	4	2	7	9	0.9	2.8	1.9
	11	1	0	0	0	0	1	0	0	0	0	0	0	0	2	2	2	4	0.7	0.9	0.8	
	12	0	0	0	0	0	5	4	0	0	0	0	0	4	4	9	8	17	4.7	4.0	4.4	
Totals (Grades 9-12)		2	2	0	0	0	9	9	0	0	0	0	0	0	10	16	21	27	48	2.1	2.8	2.5
Ethnic Totals		4		0		0		18		0		0		26								

Grades	Afr. Am.	Asian	Filipino	Hispanic	Indoch.	Nat. Am.	Pac. Isl.	White	Rates per 100		
									M	F	Total
9-12	3.1	0.0	0.0	2.5	0.0	0.0	0.0	2.6	2.1	2.8	2.5
10-12	2.1	0.0	0.0	2.7	0.0	0.0	0.0	2.1	1.9	2.5	2.2

Grade	Afr. Am.	Asian	Filipino	Hispanic	Indoch.	Nat. Am.	Pac. Isl.	White
9	5.7	0.0	0.0	2.0	0.0	0.0	0.0	4.2
10	2.9	0.0	0.0	1.7	0.0	0.0	0.0	2.1
11	3.3	0.0	0.0	0.6	0.0	0.0	0.0	0.8
12	0.0	0.0	0.0	7.0	0.0	0.0	0.0	3.8

Grades	Afr. Am.	Asian	Filipino	Hispanic	Indoch.	Nat. Am.	Pac. Isl.	White	Rates per 100		
									M	F	Total
9-12	11.5	0.0	0.0	11.0	0.0	0.0	0.0	10.4	8.8	10.9	9.8
10-12	6.1	0.0	0.0	9.1	0.0	0.0	0.0	6.5	6.3	7.5	6.9



# San Diego City Schools

## 2003-2004 Dropout Counts and Rates by Grade Level, Ethnicity, and Gender

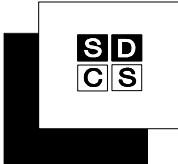
### SAN DIEGO (356)

Grade	Afr. Am.		Asian		Filipino		Hispanic		Indoch.		Nat. Am.		Pac. Isl.		White		Total		Rates per 100			
	M	F	M	F	M	F	M	F	M	F	M	F	M	F	M	F	All	M	F	Total		
<b>Dropout Counts</b>																						
9	2	1	0	0	0	0	4	2	0	0	1	0	1	0	1	0	9	3	12	2.7	0.8	1.7
10	1	3	0	0	0	0	18	18	0	0	0	0	0	0	0	2	19	23	42	4.4	5.0	4.7
11	6	0	0	0	0	0	34	13	0	0	0	0	0	1	0	1	41	14	55	10.9	3.8	7.4
12	4	2	0	0	0	1	18	7	0	0	0	0	0	0	7	2	29	12	41	14.2	5.5	9.7
<b>Totals (Grades 9-12)</b>	13	6	0	0	0	1	74	40	0	0	1	0	2	0	8	5	98	52	150	7.3	3.6	5.4
<b>Ethnic Totals</b>	19		0		1		114		0		1		2		13							

Grades	Afr. Am.	Asian	Filipino	Hispanic	Indoch.	Nat. Am.	Pac. Isl.	White	Rates per 100		
									M	F	Total
9-12	4.9	0.0	4.2	5.8	0.0	8.3	18.2	4.0	7.3	3.6	5.4
10-12	6.0	0.0	5.3	7.2	0.0	0.0	14.3	5.1	8.8	4.7	6.7

Grade	Afr. Am.	Asian	Filipino	Hispanic	Indoch.	Nat. Am.	Pac. Isl.	White
9	2.4	0.0	0.0	1.3	0.0	25.0	25.0	1.1
10	3.9	0.0	0.0	5.3	0.0	0.0	0.0	2.3
11	6.1	0.0	0.0	8.7	0.0	0.0	50.0	1.2
12	9.1	0.0	16.7	9.4	0.0	0.0	0.0	13.4

Grades	Afr. Am.	Asian	Filipino	Hispanic	Indoch.	Nat. Am.	Pac. Isl.	White	Rates per 100		
									M	F	Total
9-12	20.0	0.0	16.7	22.6	0.0	25.0	62.5	17.4	28.9	14.3	21.6
10-12	18.0	0.0	16.7	21.6	0.0	0.0	50.0	16.5	26.9	13.6	20.3



# San Diego City Schools

## 2003-2004 Dropout Counts and Rates by Grade Level, Ethnicity, and Gender

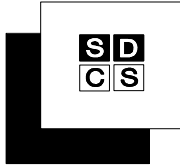
### SCRIPPS RANCH (359)

Grade	Afr. Am.		Asian		Filipino		Hispanic		Indoch.		Nat. Am.		Pac. Isl.		White		Total		Rates per 100		
	M	F	M	F	M	F	M	F	M	F	M	F	M	F	M	F	All	M	F	Total	
Dropout Counts	9	1	0	1	0	0	1	1	1	0	0	0	0	4	4	8	5	13	2.5	1.5	2.0
	10	1	0	0	0	1	0	0	0	0	0	0	0	0	2	2	4	0.7	0.6	0.6	
	11	1	1	0	0	1	0	2	1	0	0	0	0	0	3	4	5	1.5	1.7	1.6	
	12	2	1	0	1	0	0	0	0	1	0	0	0	0	3	4	9	2.0	1.7	1.8	
Totals (Grades 9-12)		5	2	1	1	2	0	3	2	1	1	0	0	0	0	0	7	10	19	16	35
Ethnic Totals		7		2		2		5		2		0		0		17					

Grades	Afr. Am.	Asian	Filipino	Hispanic	Indoch.	Nat. Am.	Pac. Isl.	White	M	F	Total
9-12	3.3	1.0	1.1	1.6	1.0	0.0	0.0	1.4	1.7	1.4	1.5
10-12	4.6	0.7	1.5	1.5	0.7	0.0	0.0	1.0	1.3	1.3	1.3

Grade	Afr. Am.	Asian	Filipino	Hispanic	Indoch.	Nat. Am.	Pac. Isl.	White
9	1.3	2.0	0.0	1.8	1.9	0.0	0.0	2.6
10	2.0	0.0	2.4	0.0	0.0	0.0	0.0	0.6
11	5.9	0.0	2.0	4.7	0.0	0.0	0.0	0.9
12	6.5	2.1	0.0	0.0	2.4	0.0	0.0	1.5

Grades	Afr. Am.	Asian	Filipino	Hispanic	Indoch.	Nat. Am.	Pac. Isl.	White	M	F	Total
9-12	14.9	4.0	4.3	6.4	4.3	0.0	0.0	5.6	6.4	5.4	5.9
10-12	13.8	2.1	4.3	4.7	2.4	0.0	0.0	3.0	4.0	4.0	4.0



# San Diego City Schools

## 2003-2004 Dropout Counts and Rates by Grade Level, Ethnicity, and Gender

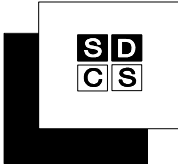
SERRA (357)

Grade	Afr. Am.		Asian		Filipino		Hispanic		Indoch.		Nat. Am.		Pac. Isl.		White		Total			Rates per 100				
	M	F	M	F	M	F	M	F	M	F	M	F	M	F	M	F	M	F	All	M	F	Total		
Dropout Counts	9	4	1	1	1	1	0	0	2	2	0	0	0	0	0	0	4	1	11	5	16	3.4	1.4	2.4
	10	0	0	0	0	0	0	0	3	1	0	0	0	0	0	0	0	0	3	1	4	1.1	0.4	0.7
	11	1	0	0	1	2	0	0	0	1	0	0	0	0	0	2	0	5	2	7	2.3	0.8	1.5	
	12	0	1	3	0	0	1	3	1	1	0	0	0	0	3	2	10	5	15	5.6	2.5	3.9		
Totals (Grades 9-12)		5	2	4	2	2	1	8	5	1	0	0	0	0	0	9	3	29	13	42	3.0	1.2	2.1	
Ethnic Totals		7		6		3		13		1		0		0		12								

Grades	Afr. Am.	Asian	Filipino	Hispanic	Indoch.	Nat. Am.	Pac. Isl.	White	Rates per 100		
									M	F	Total
9-12	2.0	7.8	2.9	2.1	0.6	0.0	0.0	1.8	3.0	1.2	2.1
10-12	0.8	6.7	4.5	2.3	0.9	0.0	0.0	1.5	2.7	1.1	1.9

Grade	Afr. Am.	Asian	Filipino	Hispanic	Indoch.	Nat. Am.	Pac. Isl.	White
9	4.7	11.8	0.0	1.8	0.0	0.0	0.0	2.3
10	0.0	0.0	0.0	2.4	0.0	0.0	0.0	0.0
11	1.0	6.3	8.3	0.8	0.0	0.0	0.0	1.4
12	1.9	12.5	3.8	4.2	2.1	0.0	0.0	3.9

Grades	Afr. Am.	Asian	Filipino	Hispanic	Indoch.	Nat. Am.	Pac. Isl.	White	M	F	Total
9-12	7.5	27.6	11.9	8.9	2.1	0.0	0.0	7.3	12.0	5.0	8.4
10-12	2.9	18.0	11.9	7.2	2.1	0.0	0.0	5.2	8.9	3.6	6.1



# San Diego City Schools

## 2003-2004 Dropout Counts and Rates by Grade Level, Ethnicity, and Gender

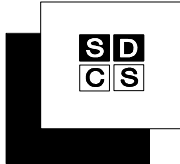
### UNIVERSITY CITY (355)

Grade	Afr. Am.		Asian		Filipino		Hispanic		Indoch.		Nat. Am.		Pac. Isl.		White		Total			Rates per 100		
	M	F	M	F	M	F	M	F	M	F	M	F	M	F	M	F	M	F	All	M	F	Total
Dropout Counts	9	0	0	0	0	0	1	1	0	0	0	0	0	0	3	4	4	5	9	1.6	1.9	1.7
	10	0	0	0	0	0	0	0	0	0	0	0	0	1	0	1	0	1	0.4	0.0	0.2	
	11	0	0	0	0	0	0	0	0	0	0	0	0	2	1	2	1	3	0.8	0.4	0.6	
	12	0	0	1	0	0	0	2	0	0	0	0	0	1	1	2	3	5	0.9	1.4	1.2	
Totals (Grades 9-12)		0	0	1	0	0	0	1	3	0	0	0	0	0	7	6	9	9	18	0.9	0.9	0.9
Ethnic Totals		0		1		0		4		0		0		0		13						

Grades	Afr. Am.	Asian	Filipino	Hispanic	Indoch.	Nat. Am.	Pac. Isl.	White	M	F	Total
9-12	0.0	0.7	0.0	0.9	0.0	0.0	0.0	1.6	0.9	0.9	0.9
10-12	0.0	1.0	0.0	0.6	0.0	0.0	0.0	1.0	0.7	0.6	0.6

Grade	Afr. Am.	Asian	Filipino	Hispanic	Indoch.	Nat. Am.	Pac. Isl.	White
9	0.0	0.0	0.0	1.5	0.0	0.0	0.0	3.2
10	0.0	0.0	0.0	0.0	0.0	0.0	0.0	0.5
11	0.0	0.0	0.0	0.0	0.0	0.0	0.0	1.4
12	0.0	2.6	0.0	2.6	0.0	0.0	0.0	1.1

Grades	Afr. Am.	Asian	Filipino	Hispanic	Indoch.	Nat. Am.	Pac. Isl.	White	M	F	Total
9-12	0.0	2.6	0.0	4.1	0.0	0.0	0.0	6.0	3.6	3.7	3.6
10-12	0.0	2.6	0.0	2.6	0.0	0.0	0.0	2.9	2.1	1.8	1.9



# San Diego City Schools

## 2003-2004 Dropout Counts and Rates by Grade Level, Ethnicity, and Gender

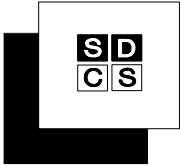
GOMPERS (335)

Grade	Afr. Am.		Asian		Filipino		Hispanic		Indoch.		Nat. Am.		Pac. Isl.		White		Total		Rates per 100			
	M	F	M	F	M	F	M	F	M	F	M	F	M	F	M	F	All	M	F	Total		
Dropout Counts	7	3		1	0	0	13	6	1	0			3	0	3	3	27	13	40	10.4	7.6	9.3
	8	0	0	0	0	0	0	0	0	0			0	0	0	0	1	0	1	0.5	0.0	0.3
	9	3	3	0	0	0	14	4	0	0			2	0	0	0	19	7	26	8.4	3.2	5.9
	10	4	3	0	0	0	15	7	1	0			0	1	0	0	20	11	31	18.0	7.2	11.7
	11	1	2			1	8	10	1	0			0	0	0	1	11	13	24	13.3	13.8	13.6
	12	2	0			0	2	5	0	0			0	1	2	0	6	6	12	8.0	9.4	8.6
Totals (Grades 7-12)	18	11	0	1	1	0	52	32	3	0			5	2	5	4	84	50	134	8.9	5.7	7.3
Ethnic Totals	29		1		1		84		3				7		9							

Grades	Afr. Am.	Asian	Filipino	Hispanic	Indoch.	Nat. Am.	Pac. Isl.	White	Rates per 100		
									M	F	Total
7-12	5.4	10.0	7.1	8.1	2.2		16.7	18.8	8.9	5.7	7.3
8-12	4.7	0.0	10.0	8.0	1.8		12.9	10.7	8.3	5.2	6.7
9-12	6.0	0.0	11.1	11.3	2.2		20.0	18.8	11.3	7.0	9.1
10-12	7.1	0.0	14.3	14.2	3.6		25.0	42.9	13.8	9.6	11.6

Grade	Afr. Am.	Asian	Filipino	Hispanic	Indoch.	Nat. Am.	Pac. Isl.	White
7	7.5	50.0	0.0	8.2	3.6		27.3	30.0
8	1.0	0.0	0.0	0.0	0.0		0.0	0.0
9	4.5	0.0	0.0	7.3	0.0		16.7	0.0
10	8.8	0.0	0.0	15.2	3.6		33.3	0.0
11	6.0		33.3	16.8	7.7		0.0	50.0
12	5.3		0.0	8.9	0.0		33.3	66.7

Grades	Afr. Am.	Asian	Filipino	Hispanic	Indoch.	Nat. Am.	Pac. Isl.	White	Rates per 100		
									M	F	Total
9-12	22.4	0.0	33.3	40.4	11.0		63.0	83.3	40.1	29.9	34.4
10-12	18.7	0.0	33.3	35.7	11.0		55.6	83.3	34.6	27.5	30.3



# San Diego City Schools

## 2003-2004 Dropout Counts and Rates by Grade Level, Ethnicity, and Gender

### MT. EVEREST (395)

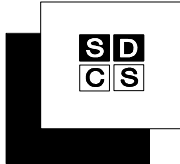
Grade	Afr. Am.		Asian		Filipino		Hispanic		Indoch.		Nat. Am.		Pac. Isl.		White		Total			Rates per 100		
	M	F	M	F	M	F	M	F	M	F	M	F	M	F	M	F	All	M	F	Total		
Dropout Counts	7	0	0				0	0			0				0	0	0	0	0	0.0	0.0	0.0
	8	0				0					0	0			0	0	0	0	0	0.0	0.0	0.0
	9		0					0			0				0	0	0	0	0	0.0	0.0	0.0
	10		0				0	0							0	0	0	0	0	0.0	0.0	0.0
	11						0	0							0	0	0	0	0	0.0	0.0	0.0
	12														0	0	0	0	0	0.0	0.0	0.0
Totals (Grades 7-12)		0	0	0	0	0	0	0			0	0			0	0	0	0	0	0.0	0.0	0.0
Ethnic Totals		0		0	0	0	0				0				0							

Grades	Afr. Am.	Asian	Filipino	Hispanic	Indoch.	Nat. Am.	Pac. Isl.	White	Rates per 100		
									M	F	Total
7-12	0.0	0.0	0.0	0.0		0.0		0.0	0.0	0.0	0.0
8-12	0.0	0.0	0.0	0.0		0.0		0.0	0.0	0.0	0.0
9-12	0.0	0.0		0.0		0.0		0.0	0.0	0.0	0.0
10-12	0.0			0.0				0.0	0.0	0.0	0.0

Grade	Afr. Am.	Asian	Filipino	Hispanic	Indoch.	Nat. Am.	Pac. Isl.	White
7	0.0			0.0		0.0		0.0
8	0.0		0.0			0.0		0.0
9	0.0	0.0		0.0		0.0		0.0
10	0.0			0.0				0.0
11				0.0				0.0
12								0.0

Grades	Afr. Am.	Asian	Filipino	Hispanic	Indoch.	Nat. Am.	Pac. Isl.	White	Rates per 100		
									M	F	Total
9-12	0.0	0.0		0.0		0.0		0.0	0.0	0.0	0.0
10-12	0.0			0.0				0.0	0.0	0.0	0.0





# San Diego City Schools

## 2003-2004 Dropout Counts and Rates by Grade Level, Ethnicity, and Gender

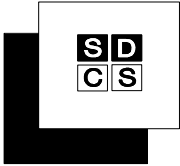
MUIR (369)

Grade	Afr. Am.		Asian		Filipino		Hispanic		Indoch.		Nat. Am.		Pac. Isl.		White		Total			Rates per 100		
	M	F	M	F	M	F	M	F	M	F	M	F	M	F	M	F	M	F	All	M	F	Total
Dropout Counts	7	0	0			0	0	0	0	0	0	0			0	0	0	0	0	0.0	0.0	0.0
	8	0	0				0	0					0		0	0	0	0	0.0	0.0	0.0	
	9	0	0	0	0		0	0		0					1	0	1	1	10.0	0.0	3.4	
	10	0	0			0	0	0							0	0	0	0	0.0	0.0	0.0	
	11	0	0			0	0	0		0	1				0	0	1	1	9.1	0.0	3.8	
	12	0	0				0	0							0	1	1	1	0.0	14.3	9.1	
Totals (Grades 7-12)		0	0	0	0	0	0	0	0	0	1	0	0		1	1	2	1	3	2.4	1.2	1.8
Ethnic Totals		0		0		0		0		0	1		0		2							

Grades	Afr. Am.	Asian	Filipino	Hispanic	Indoch.	Nat. Am.	Pac. Isl.	White	Rates per 100		
									M	F	Total
7-12	0.0	0.0	0.0	0.0	0.0	25.0	0.0	5.0	2.4	1.2	1.8
8-12	0.0	0.0	0.0	0.0	0.0	100.0	0.0	6.1	3.6	1.6	2.5
9-12	0.0	0.0	0.0	0.0	0.0	100.0		8.3	4.8	2.1	3.3
10-12	0.0		0.0	0.0	0.0	100.0		5.6	3.1	3.4	3.3

Grade	Afr. Am.	Asian	Filipino	Hispanic	Indoch.	Nat. Am.	Pac. Isl.	White
7	0.0		0.0	0.0	0.0	0.0		0.0
8	0.0			0.0			0.0	0.0
9	0.0	0.0		0.0	0.0			16.7
10	0.0		0.0	0.0				0.0
11	0.0		0.0	0.0	0.0	100.0		0.0
12	0.0			0.0				33.3

Grades	Afr. Am.	Asian	Filipino	Hispanic	Indoch.	Nat. Am.	Pac. Isl.	White	Rates per 100		
									M	F	Total
9-12	0.0	0.0	0.0	0.0	0.0	100.0		44.4	18.2	14.3	15.6
10-12	0.0		0.0	0.0	0.0	100.0		33.3	9.1	14.3	12.6



# San Diego City Schools

## 2003-2004 Dropout Counts and Rates by Grade Level, Ethnicity, and Gender

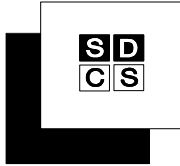
### PREUSS SCHOOL UCSD (348)

Grade	Afr. Am.		Asian		Filipino		Hispanic		Indoch.		Nat. Am.		Pac. Isl.		White		Total			Rates per 100		
	M	F	M	F	M	F	M	F	M	F	M	F	M	F	M	F	M	F	All	M	F	Total
Dropout Counts	7	0	0	0	0	0	0	0	0	0			0	0	0	0	0	0	0	0.0	0.0	0.0
	8	0	0	0	0	0	0	0	0	0			0	0	0	0	0	0	0.0	0.0	0.0	
	9	0	0	0	0	0	0	0	0	0			0	0	0	0	0	0	0.0	0.0	0.0	
	10	0	0	0	0	0	0	0	0	0			0	0	0	0	0	0	0.0	0.0	0.0	
	11	0	0	0	0	0	0	0	0	0			0	0	0	0	0	0	0.0	0.0	0.0	
	12	0	0	0	0	0	0	0	0	0			0	0	0	0	0	0	0.0	0.0	0.0	
Totals (Grades 7-12)		0	0	0	0	0	0	0	0	0			0	0	0	0	0	0	0.0	0.0	0.0	
Ethnic Totals		0		0		0		0		0			0		0							

Grades	Afr. Am.	Asian	Filipino	Hispanic	Indoch.	Nat. Am.	Pac. Isl.	White	Rates per 100		
									M	F	Total
7-12	0.0	0.0	0.0	0.0	0.0		0.0	0.0	0.0	0.0	0.0
8-12	0.0	0.0	0.0	0.0	0.0		0.0	0.0	0.0	0.0	0.0
9-12	0.0	0.0	0.0	0.0	0.0		0.0	0.0	0.0	0.0	0.0
10-12	0.0	0.0	0.0	0.0	0.0		0.0	0.0	0.0	0.0	0.0

Grade	Afr. Am.	Asian	Filipino	Hispanic	Indoch.	Nat. Am.	Pac. Isl.	White
7	0.0	0.0	0.0	0.0	0.0			0.0
8	0.0	0.0	0.0	0.0	0.0		0.0	0.0
9	0.0	0.0	0.0	0.0	0.0		0.0	0.0
10	0.0	0.0	0.0	0.0	0.0			0.0
11	0.0	0.0	0.0	0.0	0.0		0.0	0.0
12	0.0	0.0	0.0	0.0	0.0			0.0

Grades	Afr. Am.	Asian	Filipino	Hispanic	Indoch.	Nat. Am.	Pac. Isl.	White	Rates per 100		
									M	F	Total
9-12	0.0	0.0	0.0	0.0	0.0		0.0	0.0	0.0	0.0	0.0
10-12	0.0	0.0	0.0	0.0	0.0		0.0	0.0	0.0	0.0	0.0



# San Diego City Schools

## 2003-2004 Dropout Counts and Rates by Grade Level, Ethnicity, and Gender

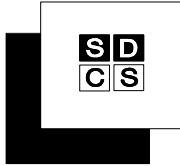
S.C.P.A. (368)

Grade	Afr. Am.		Asian		Filipino		Hispanic		Indoch.		Nat. Am.		Pac. Isl.		White		Total			Rates per 100		
	M	F	M	F	M	F	M	F	M	F	M	F	M	F	M	F	M	F	All	M	F	Total
Dropout Counts	7	0	0	0	0	0	0	0	0	1	0	0	0	0	0	0	0	1	1	0.0	0.7	0.4
	8	1	0	0	0	0	0	0	0	0	0	0	0	0	0	0	1	0	1	1.0	0.0	0.4
	9	0	1	0	0	0	0	0	0	0	0	0	0	0	0	0	1	1	0.0	0.7	0.4	
	10	0	0	0	0	0	0	0	0	0	0	0	0	0	0	0	0	0	0.0	0.0	0.0	
	11	1	0	0	0	0	0	1	0	0	0	0	0	0	0	1	1	2	1.2	0.8	0.9	
	12	1	0	0	0	0	0	0	0	0	0	0	0	0	0	1	0	1	1.7	0.0	0.6	
Totals (Grades 7-12)		3	1	0	0	0	0	0	1	0	1	0	0	0	0	0	3	3	6	0.6	0.4	0.4
Ethnic Totals		4		0		0		1		1		0		0		0						

Grades	Afr. Am.	Asian	Filipino	Hispanic	Indoch.	Nat. Am.	Pac. Isl.	White	Rates per 100		
									M	F	Total
7-12	1.1	0.0	0.0	0.3	3.3	0.0	0.0	0.0	0.6	0.4	0.4
8-12	1.4	0.0	0.0	0.4	0.0	0.0	0.0	0.0	0.7	0.3	0.5
9-12	1.3	0.0	0.0	0.5	0.0	0.0	0.0	0.0	0.6	0.4	0.5
10-12	1.2	0.0	0.0	0.7	0.0	0.0	0.0	0.0	0.9	0.3	0.5

Grade	Afr. Am.	Asian	Filipino	Hispanic	Indoch.	Nat. Am.	Pac. Isl.	White
7	0.0	0.0	0.0	0.0	16.7	0.0	0.0	0.0
8	1.7	0.0	0.0	0.0	0.0	0.0	0.0	0.0
9	1.5	0.0	0.0	0.0	0.0	0.0	0.0	0.0
10	0.0	0.0	0.0	0.0	0.0	0.0		0.0
11	1.7	0.0	0.0	2.6	0.0	0.0		0.0
12	2.1	0.0	0.0	0.0	0.0		0.0	0.0

Grades	Afr. Am.	Asian	Filipino	Hispanic	Indoch.	Nat. Am.	Pac. Isl.	White	Rates per 100		
									M	F	Total
9-12	5.2	0.0	0.0	2.6	0.0	0.0	0.0	0.0	2.8	1.5	1.9
10-12	3.8	0.0	0.0	2.6	0.0	0.0	0.0	0.0	2.8	0.8	1.5



# San Diego City Schools

## 2003-2004 Dropout Counts and Rates by Grade Level, Ethnicity, and Gender

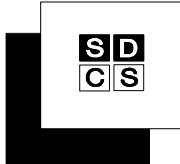
A.L.B.A. (331)

Grade	Afr. Am.		Asian		Filipino		Hispanic		Indoch.		Nat. Am.		Pac. Isl.		White		Total			Rates per 100		
	M	F	M	F	M	F	M	F	M	F	M	F	M	F	M	F	M	F	All	M	F	Total
Dropout Counts	7	0					0	0							3	0	3			60.0	0.0	50.0
	8	1	1		0		0	0	0				0		4	0	5	1	6	17.2	25.0	18.2
	9	1			0		0	0	0						0		1	0	1	6.7	0.0	6.3
	10	1					0	0							1		2	0	2	28.6	0.0	25.0
	11	1		0	0										1		1		2	16.7		33.3
	12	0		0	0		0								0		0		0	0.0		0.0
Totals (Grades 7-12)		4	1	0		0		0	0	0				0	8	0	12	2	14	17.9	28.6	18.9
Ethnic Totals		5		0		0		0	1					0	8							

Grades	Afr. Am.	Asian	Filipino	Hispanic	Indoch.	Nat. Am.	Pac. Isl.	White	Rates per 100		
									M	F	Total
7-12	26.3	0.0	0.0	0.0	50.0		0.0	88.9	17.9	28.6	18.9
8-12	27.8	0.0	0.0	0.0	50.0		0.0	55.6	14.5	33.3	16.2
9-12	23.1	0.0	0.0	0.0	100.0			33.3	12.1	50.0	14.3
10-12	25.0	0.0	0.0	0.0				50.0	16.7	100.0	21.1

Grade	Afr. Am.	Asian	Filipino	Hispanic	Indoch.	Nat. Am.	Pac. Isl.	White
7	0.0			0.0				
8	40.0		0.0	0.0	0.0		0.0	66.7
9	20.0		0.0	0.0	0.0			0.0
10	50.0			0.0				50.0
11	25.0	0.0	0.0					
12	0.0	0.0	0.0	0.0				

Grades	Afr. Am.	Asian	Filipino	Hispanic	Indoch.	Nat. Am.	Pac. Isl.	White	Rates per 100		
									M	F	Total
9-12	70.0	0.0	0.0	0.0	0.0			50.0	44.4	0.0	53.1
10-12	62.5	0.0	0.0	0.0				50.0	40.5	0.0	50.0



# San Diego City Schools

## 2003-2004 Dropout Counts and Rates by Grade Level, Ethnicity, and Gender

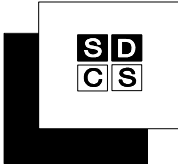
AUDEO (008)

Grade	Afr. Am.		Asian		Filipino		Hispanic		Indoch.		Nat. Am.		Pac. Isl.		White		Total			Rates per 100		
	M	F	M	F	M	F	M	F	M	F	M	F	M	F	M	F	M	F	All	M	F	Total
Dropout Counts	7	0					0	0		0					0	0	0	0	0	0.0	0.0	0.0
	8	0				0	0	0	0				0	0	0	0	0	0	0	0.0	0.0	0.0
	9	0	0		0	0	0	0	0	0			0	0	0	0	0	0	0.0	0.0	0.0	
	10	0	0		0	0	0	0				0	0	0	0	0	0	0	0.0	0.0	0.0	
	11	0	0				0	0			0	0	0	0	0	1	1	1	0.0	12.5	4.5	
	12	0	3		0	0	0	1			0	0	3	2	4	6	10	10	66.7	66.7	66.7	
Totals (Grades 7-12)		0	3		0	1	0	1	1	0	0	0	0	0	3	2	4	7	11	7.5	12.5	10.1
Ethnic Totals		3			1		1		1		0		0		5							

Grades	Afr. Am.	Asian	Filipino	Hispanic	Indoch.	Nat. Am.	Pac. Isl.	White	Rates per 100		
									M	F	Total
7-12	21.4		14.3	3.3	50.0	0.0	0.0	10.2	7.5	12.5	10.1
8-12	23.1		14.3	3.7	100.0	0.0	0.0	13.5	8.7	15.2	12.0
9-12	25.0		16.7	4.8	100.0	0.0	0.0	15.2	9.3	19.4	13.9
10-12	33.3		20.0	8.3		0.0	0.0	19.2	12.1	29.2	19.3

Grade	Afr. Am.	Asian	Filipino	Hispanic	Indoch.	Nat. Am.	Pac. Isl.	White
7	0.0			0.0	0.0			0.0
8	0.0		0.0	0.0			0.0	0.0
9	0.0		0.0	0.0	0.0		0.0	0.0
10	0.0		0.0	0.0			0.0	0.0
11	0.0			0.0		0.0	0.0	0.0
12	150.0		0.0	33.3			0.0	100.0

Grades	Afr. Am.	Asian	Filipino	Hispanic	Indoch.	Nat. Am.	Pac. Isl.	White	M	F	Total
9-12	150.0		0.0	33.3	0.0	0.0	0.0	100.0	66.7	70.8	68.2
10-12	150.0		0.0	33.3		0.0	0.0	100.0	66.7	70.8	68.2



# San Diego City Schools

## 2003-2004 Dropout Counts and Rates by Grade Level, Ethnicity, and Gender

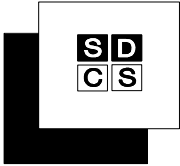
### CHARTER SCHOOL OF SD (366)

Grade	Afr. Am.		Asian		Filipino		Hispanic		Indoch.		Nat. Am.		Pac. Isl.		White		Total		Rates per 100																									
	M	F	M	F	M	F	M	F	M	F	M	F	M	F	M	F	M	F	All	M	F	Total																						
Dropout Counts	7	0	1	0	0	0	0	0	0	0	0	0	0	0	0	0	0	1	1	0.0	6.3	2.9																						
	8	1	0	0	0	0	0	0	0	0	0	0	0	0	0	0	1	0	1	4.3	0.0	2.0																						
	9	2	2	0	0	1	1	3	2	0	0	1	0	0	3	1	10	7	17	11.6	8.4	10.1																						
	10	1	4	0	0	0	1	2	3	0	0	0	0	0	4	1	7	9	16	4.5	4.5	4.5																						
	11	3	4	0	1	1	2	12	8	0	0	0	0	2	0	5	10	23	25	48	11.1	12.4	11.7																					
	12	8	6	0	0	1	3	21	20	2	0	0	0	1	1	9	17	42	47	89	25.0	25.8	25.4																					
Totals (Grades 7-12)	15		17		0		1		3		7		38		33		2		0		1		1		3		1		21		29		83		89		172		12.6		12.6		12.6	
Ethnic Totals	32		1		10		71		2		2		4		50																													

Grades	Afr. Am.	Asian	Filipino	Hispanic	Indoch.	Nat. Am.	Pac. Isl.	White	Rates per 100		
	M	F	Total								
7-12	15.2	3.1	13.3	15.6	7.7	16.7	14.3	9.5	12.6	12.6	12.6
8-12	15.1	3.4	13.5	15.9	7.7	18.2	15.4	9.7	13.0	12.7	12.8
9-12	15.2	4.0	13.5	16.4	8.0	18.2	15.4	10.1	13.3	13.2	13.3
10-12	15.2	4.3	12.5	17.3	10.0	0.0	18.2	10.8	13.6	13.9	13.7

Grade	Afr. Am.	Asian	Filipino	Hispanic	Indoch.	Nat. Am.	Pac. Isl.	White
7	20.0	0.0	0.0	0.0	0.0	0.0	0.0	0.0
8	12.5	0.0		0.0	0.0			0.0
9	15.4	0.0	20.0	9.8	0.0	40.0	0.0	6.1
10	7.6	0.0	6.3	3.7	0.0	0.0	0.0	4.2
11	12.3	8.3	11.5	14.3	0.0	0.0	28.6	9.4
12	29.2	0.0	18.2	38.7	28.6	0.0	18.2	17.4

Grades	Afr. Am.	Asian	Filipino	Hispanic	Indoch.	Nat. Am.	Pac. Isl.	White	Rates per 100		
	M	F	Total								
9-12	51.4	8.3	45.7	54.3	28.6	40.0	41.6	32.7	43.7	43.2	43.5
10-12	42.6	8.3	32.1	49.4	28.6	0.0	41.6	28.4	36.3	38.0	37.1



# San Diego City Schools

## 2003-2004 Dropout Counts and Rates by Grade Level, Ethnicity, and Gender

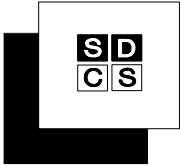
### CONNECTIONS (333)

Grade	Afr. Am.		Asian		Filipino		Hispanic		Indoch.		Nat. Am.		Pac. Isl.		White		Total		Rates per 100			
	M	F	M	F	M	F	M	F	M	F	M	F	M	F	M	F	All	M	F	Total		
Dropout Counts																						
7															0		0	1	0.0		100.0	
8																0	0	0	0.0	0.0	0.0	
9	2	3					14	14	2	3							21	21	42	190.9	140.0	161.5
10	5	1					23	19		1	0	0		1	3	3	31	25	56	86.1	59.5	71.8
11	3	1			0		8	6							2	0	13	7	20	76.5	26.9	46.5
12								4									9	13		900.0	1300.0	
Totals (Grades 7-12)	10	8			1		47	43	2	4	0	0		1	9	6	69	63	132	106.2	74.1	88.0
Ethnic Totals	18				2		90		6		0		1		15							

Grades	Afr. Am.	Asian	Filipino	Hispanic	Indoch.	Nat. Am.	Pac. Isl.	White	M	F	Total
7-12	69.2		200.0	89.1	150.0	0.0	100.0	100.0	106.2	74.1	88.0
8-12	65.4		200.0	89.1	150.0	0.0	100.0	107.1	107.8	72.9	87.9
9-12	65.4		200.0	89.1	150.0	0.0	100.0	115.4	107.8	73.8	88.5
10-12	63.2		100.0	73.8	50.0	0.0	100.0	92.3	90.6	59.4	73.0

Grade	Afr. Am.	Asian	Filipino	Hispanic	Indoch.	Nat. Am.	Pac. Isl.	White
7								0.0
8								0.0
9	71.4			164.7	250.0			
10	50.0			79.2	50.0	0.0	100.0	75.0
11	57.1		0.0	46.7				40.0
12				600.0				

Grades	Afr. Am.	Asian	Filipino	Hispanic	Indoch.	Nat. Am.	Pac. Isl.	White	M	F	Total
9-12	93.9		0.0	64.2	175.0	0.0	100.0	85.0	103.0	5.3	
10-12	78.6		0.0	155.3	50.0	0.0	100.0	85.0	96.7	336.6	281.0



# San Diego City Schools

## 2003-2004 Dropout Counts and Rates by Grade Level, Ethnicity, and Gender

### GARFIELD (361)

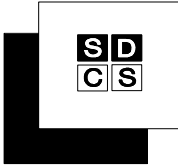
Grade	Afr. Am.		Asian		Filipino		Hispanic		Indoch.		Nat. Am.		Pac. Isl.		White		Total		Rates per 100				
	M	F	M	F	M	F	M	F	M	F	M	F	M	F	M	F	All	M	F	Total			
Dropout Counts	7	0	0	0	0	0	0	0	0	0	0	0	0	0	0	0	0	0	0	0.0	0.0	0.0	
	8							0								1	1				50.0	50.0	
	9	1	0				0	1			0			0	3			4	1	5	18.2	4.3	11.1
	10	1	4			0	0	2	2	0				0	1	4		4	11	15	6.9	15.7	11.7
	11	2	4	0			0	2	2	0	0			0	0	1		4	7	11	6.5	8.9	7.8
	12	2	1				0	2	2	2	1			1	2	1		8	6	14	19.0	11.8	15.1
Totals (Grades 7-12)		6	9	0		0	0	6	7	2	1	0		1	1	6	7	20	26	46	10.9	11.6	11.2
Ethnic Totals		15		0		0		13		3		1		1		13							

Grades	Afr. Am.	Asian	Filipino	Hispanic	Indoch.	Nat. Am.	Pac. Isl.	White	Rates per 100		
									M	F	Total
7-12	0.0	0.0	0.0	0.0	0.0	0.0	0.0	0.0	0.0	0.0	0.0
8-12	19.5	0.0	0.0	5.6	25.0	100.0	25.0	16.9	10.9	11.6	11.2
9-12	19.5	0.0	0.0	5.7	25.0	100.0	25.0	15.6	10.9	11.2	11.1
10-12	20.6	0.0	0.0	6.0	25.0		33.3	12.3	9.9	12.0	11.0

Grade	Afr. Am.	Asian	Filipino	Hispanic	Indoch.	Nat. Am.	Pac. Isl.	White
7	0.0	0.0	0.0	0.0	0.0	0.0	0.0	0.0
8				0.0				
9	11.1		0.0	3.4		0.0	0.0	75.0
10	19.2		0.0	5.3	0.0		0.0	22.7
11	22.2	0.0	0.0	5.1	0.0		0.0	3.3
12	20.0		0.0	8.5	37.5		100.0	14.3

Grades	Afr. Am.	Asian	Filipino	Hispanic	Indoch.	Nat. Am.	Pac. Isl.	White	Rates per 100		
									M	F	Total
9-12	55.3	0.0	0.0	20.6	37.5	0.0	100.0	84.0	42.3	35.2	38.5
10-12	49.7	0.0	0.0	17.8	37.5		100.0	36.0	29.5	32.2	30.9





# San Diego City Schools

## 2003-2004 Dropout Counts and Rates by Grade Level, Ethnicity, and Gender

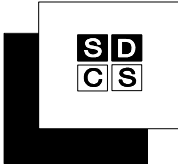
TWAIN (362)

Grade	Afr. Am.		Asian		Filipino		Hispanic		Indoch.		Nat. Am.		Pac. Isl.		White		Total		Rates per 100			
	M	F	M	F	M	F	M	F	M	F	M	F	M	F	M	F	M	F	All	M	F	Total
Dropout Counts	7	0	0	0	0	0	0	0	0	0	0	0	0	0	0	0	0	0	0	0.0	0.0	0.0
	8		0					0									0	0	0		0.0	0.0
	9	2	0			0	5	1	1	0		0			4	2	12	3	15	38.7	7.5	21.1
	10	2	1		1	1	2	2	1	1		1			2	1	9	7	16	17.3	11.1	13.9
	11	8	0		1	2	0	6	4	1	0			0	3	1	20	6	26	45.5	15.0	31.0
	12	2	3		2	0	1	3			0		1	0	0	2	5	9	14	25.0	30.0	28.0
Totals (Grades 7-12)		14	4		1	5	1	14	10	3	1	1	1	1	9	6	46	25	71	31.3	14.2	22.0
Ethnic Totals		18		1	6	24	4	2	1	1	1	15										

Grades	Afr. Am.	Asian	Filipino	Hispanic	Indoch.	Nat. Am.	Pac. Isl.	White	Rates per 100		
	M	F	Total								
7-12	0.0	0.0	0.0	0.0	0.0	0.0	0.0	0.0	0.0	0.0	0.0
8-12	39.1	100.0	30.0	16.3	33.3	66.7	50.0	16.3	31.3	14.2	22.0
9-12	40.0	100.0	30.0	16.6	33.3	66.7	50.0	16.3	31.3	14.5	22.2
10-12	47.1	100.0	31.6	16.5	37.5	100.0	50.0	12.2	29.3	16.5	22.5

Grade	Afr. Am.	Asian	Filipino	Hispanic	Indoch.	Nat. Am.	Pac. Isl.	White
7	0.0	0.0	0.0	0.0	0.0	0.0	0.0	0.0
8	0.0			0.0				
9	18.2		0.0	16.7	25.0	0.0		33.3
10	18.8		25.0	7.4	50.0	200.0		9.4
11	72.7	100.0	33.3	26.3	25.0		0.0	17.4
12	71.4		40.0	23.5		0.0	100.0	10.5

Grades	Afr. Am.	Asian	Filipino	Hispanic	Indoch.	Nat. Am.	Pac. Isl.	White	Rates per 100		
M	F	Total									
9-12	94.8	100.0	70.0	56.5	71.9	200.0	100.0	55.3	79.3	51.1	66.2
10-12	93.7	100.0	70.0	47.8	62.5	200.0	100.0	33.0	66.2	47.1	57.2



# San Diego City Schools

## 2003-2004 Dropout Counts and Rates by Grade Level, Ethnicity, and Gender

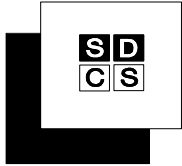
### YOUTH OPPORTUNITIES (781)

	Grade	Afr. Am.		Asian		Filipino		Hispanic		Indoch.		Nat. Am.		Pac. Isl.		White		Total		Rates per 100		
		M	F	M	F	M	F	M	F	M	F	M	F	M	F	M	F	All	M	F	Total	
Dropout Counts	9	2	2					12	10	0		0		0	4	14	16	30	46.7	42.1	44.1	
	10	1	1					13	13			0		1	2	15	16	31	53.6	48.5	50.8	
	11	3	3					17	21			0		1	0	21	24	45	51.2	42.1	45.9	
	12	0						11	7					1		12	9	21	70.6	64.3	67.7	
Totals (Grades 9-12)		6	6					53	51	0		0	0	3	8	62	65	127	53.4	45.8	49.2	
Ethnic Totals		12						104		0		0		0		11						

Single-Year Rates	Grades	Afr. Am.	Asian	Filipino	Hispanic	Indoch.	Nat. Am.	Pac. Isl.	White	Rates per 100		
										M	F	Total
	9-12	50.0			49.8	0.0	0.0	0.0	52.4	53.4	45.8	49.2
	10-12	47.1			52.9		0.0	0.0	43.8	55.8	47.1	51.1

Rates by Grade	Grade	Afr. Am.	Asian	Filipino	Hispanic	Indoch.	Nat. Am.	Pac. Isl.	White
	9	57.1			40.7	0.0	0.0		80.0
	10	66.7			51.0			0.0	50.0
	11	46.2			49.4		0.0		14.3
	12	0.0			66.7				100.0

Multi-Year Rates	Grades	Afr. Am.	Asian	Filipino	Hispanic	Indoch.	Nat. Am.	Pac. Isl.	White	Rates per 100		
										M	F	Total
	9-12	92.3			95.1	0.0	0.0	0.0	100.0	96.4	93.8	95.2
	10-12	82.1			91.7		0.0	0.0	100.0	93.3	89.3	91.4



# San Diego City Schools

## 2003-2004 Dropout Counts and Rates by Grade Level, Ethnicity, and Gender

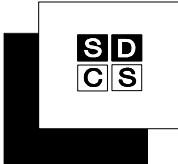
DEL SOL (439)

Grade	Afr. Am.		Asian		Filipino		Hispanic		Indoch.		Nat. Am.		Pac. Isl.		White		Total		Rates per 100			
	M	F	M	F	M	F	M	F	M	F	M	F	M	F	M	F	All	M	F	Total		
Dropout Counts	7						0								0	0	0	0	0	0.0	0.0	0.0
	8	0					0								0	1	0	1	1	0.0	100.0	25.0
	9	2	0				0	0							0	2	0	2	22.2	0.0	18.2	
	10	0			0		0								1	0	1	1	16.7	0.0	11.1	
	11	0			0		0	0							0	2	2	2	0.0	100.0	22.2	
	12		0				0				0				0	0	0	0	0.0	0.0	0.0	
Totals (Grades 7-12)		2	1			0	0	0			0				1	2	3	3	6	9.4	27.3	14.0
Ethnic Totals		3			0		0				0				3							

Grades	Afr. Am.	Asian	Filipino	Hispanic	Indoch.	Nat. Am.	Pac. Isl.	White	Rates per 100		
									M	F	Total
7-12	42.9		0.0	0.0		0.0		15.0	9.4	27.3	14.0
8-12	42.9		0.0	0.0		0.0		16.7	10.0	30.0	15.0
9-12	50.0		0.0	0.0		0.0		12.5	11.1	22.2	13.9
10-12	25.0		0.0	0.0		0.0		18.2	5.6	28.6	12.0

Grade	Afr. Am.	Asian	Filipino	Hispanic	Indoch.	Nat. Am.	Pac. Isl.	White
7				0.0				0.0
8	0.0			0.0				50.0
9	100.0			0.0				0.0
10	0.0		0.0	0.0				16.7
11	50.0		0.0	0.0				100.0
12	0.0			0.0		0.0		0.0

Grades	Afr. Am.	Asian	Filipino	Hispanic	Indoch.	Nat. Am.	Pac. Isl.	White	Rates per 100		
									M	F	Total
9-12	100.0		0.0	0.0		0.0		100.0	35.2	100.0	43.4
10-12	50.0		0.0	0.0		0.0		100.0	16.7	100.0	30.9



# San Diego City Schools

## 2003-2004 Dropout Counts and Rates by Grade Level, Ethnicity, and Gender

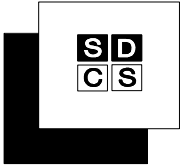
### HOME AND HOSPITAL IN (382)

Grade	Afr. Am.		Asian		Filipino		Hispanic		Indoch.		Nat. Am.		Pac. Isl.		White		Total			Rates per 100			
	M	F	M	F	M	F	M	F	M	F	M	F	M	F	M	F	M	F	All	M	F	Total	
Dropout Counts	7						0	0							0	0	0	0	0	0.0	0.0	0.0	
	8							1								4		5	6		125.0	150.0	
	9	0					0								3	0	3	1	4	60.0	100.0	66.7	
	10						0	0								2	1	3	66.7	100.0	75.0		
	11						0								0	0	1	0	1	33.3	0.0	20.0	
	12	1						0	0					0	1	2	0	2	50.0	0.0	33.3		
Totals (Grades 7-12)		3	0				0	2	0					0	0	6	5	9	7	16	56.3	58.3	57.1
Ethnic Totals		3					2		0					0	11								

Grades	Afr. Am.	Asian	Filipino	Hispanic	Indoch.	Nat. Am.	Pac. Isl.	White	Rates per 100		
									M	F	Total
7-12	60.0			16.7	0.0		0.0	122.2	56.3	58.3	57.1
8-12	60.0			20.0	0.0		0.0	137.5	60.0	70.0	64.0
9-12	60.0			14.3	0.0		0.0	85.7	53.3	33.3	47.6
10-12	150.0			0.0	0.0		0.0	60.0	50.0	20.0	40.0

Grade	Afr. Am.	Asian	Filipino	Hispanic	Indoch.	Nat. Am.	Pac. Isl.	White
7				0.0				0.0
8				33.3				500.0
9	0.0			100.0				150.0
10				0.0				
11	100.0			0.0				0.0
12	100.0			0.0	0.0		0.0	50.0

Grades	Afr. Am.	Asian	Filipino	Hispanic	Indoch.	Nat. Am.	Pac. Isl.	White	Rates per 100		
									M	F	Total
9-12	100.0			100.0	0.0		0.0	125.0	95.6	100.0	95.6
10-12	100.0			0.0	0.0		0.0	50.0	88.9	100.0	86.7



# San Diego City Schools

## 2003-2004 Dropout Counts and Rates by Grade Level, Ethnicity, and Gender

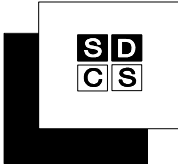
### INTEGRAT LIFE SKILLS (386)

Grade	Afr. Am.		Asian		Filipino		Hispanic		Indoch.		Nat. Am.		Pac. Isl.		White		Total			Rates per 100			
	M	F	M	F	M	F	M	F	M	F	M	F	M	F	M	F	M	F	All	M	F	Total	
Dropout Counts																	0	0	0		0.0	0.0	0.0
8	0																0	0	0	0.0	0.0	0.0	
9							0										0	0	0	0.0	0.0	0.0	
10		0																0	0		0.0	0.0	
11																			0				
12							0										0	0	0	0.0	0.0	0.0	
Totals (Grades 7-12)	0	0					0									0	0	0	0	0.0	0.0	0.0	
Ethnic Totals	0						0									0							

Grades	Afr. Am.	Asian	Filipino	Hispanic	Indoch.	Nat. Am.	Pac. Isl.	White	Rates per 100		
									M	F	Total
7-12	0.0			0.0				0.0	0.0	0.0	0.0
8-12	0.0			0.0				0.0	0.0	0.0	0.0
9-12	0.0			0.0				0.0	0.0	0.0	0.0
10-12	0.0			0.0				0.0	0.0	0.0	0.0

Grade	Afr. Am.	Asian	Filipino	Hispanic	Indoch.	Nat. Am.	Pac. Isl.	White
7								0.0
8	0.0							0.0
9				0.0				
10	0.0							
11								
12				0.0				0.0

Grades	Afr. Am.	Asian	Filipino	Hispanic	Indoch.	Nat. Am.	Pac. Isl.	White	Rates per 100		
									M	F	Total
9-12	0.0			0.0				0.0	0.0	0.0	0.0
10-12	0.0			0.0				0.0	0.0	0.0	0.0



# San Diego City Schools

## 2003-2004 Dropout Counts and Rates by Grade Level, Ethnicity, and Gender

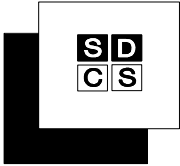
### LCI INSTRUCTION (791)

Grade	Afr. Am.		Asian		Filipino		Hispanic		Indoch.		Nat. Am.		Pac. Isl.		White		Total			Rates per 100		
	M	F	M	F	M	F	M	F	M	F	M	F	M	F	M	F	M	F	All	M	F	Total
Dropout Counts	7	0					0	0			0				0	0	0	0	0	0.0	0.0	0.0
	8	0					0	0	0			0		0	0	0	0	0	0.0	0.0	0.0	
	9	1	0				0	0						1	0	2	0	2	13.3	0.0	8.0	
	10	0	0	0		0	0	0	0					1	1	1	1	2	7.1	10.0	8.3	
	11	0	1				0				0			2	0	2	1	3	13.3	14.3	13.6	
	12		0											0	0	0	0	0	0.0	0.0	0.0	
Totals (Grades 7-12)		1	1	0		0	0	0	0	0	0	0	0	4	1	5	2	7	7.5	4.7	6.4	
Ethnic Totals		2		0		0	0	0	0		0		5									

Grades	Afr. Am.	Asian	Filipino	Hispanic	Indoch.	Nat. Am.	Pac. Isl.	White	Rates per 100		
									M	F	Total
7-12	9.5	0.0	0.0	0.0	0.0	0.0	0.0	9.1	7.5	4.7	6.4
8-12	10.5	0.0	0.0	0.0	0.0	0.0	0.0	10.9	8.8	5.1	7.3
9-12	11.1	0.0	0.0	0.0	0.0	0.0	0.0	12.8	10.0	6.3	8.5
10-12	9.1	0.0	0.0	0.0	0.0	0.0	0.0	12.1	8.6	9.1	8.8

Grade	Afr. Am.	Asian	Filipino	Hispanic	Indoch.	Nat. Am.	Pac. Isl.	White
7	0.0			0.0		0.0		0.0
8	0.0			0.0	0.0	0.0	0.0	0.0
9	14.3			0.0				16.7
10	0.0	0.0	0.0	0.0	0.0			18.2
11	14.3			0.0		0.0		16.7
12	0.0							0.0

Grades	Afr. Am.	Asian	Filipino	Hispanic	Indoch.	Nat. Am.	Pac. Isl.	White	Rates per 100		
									M	F	Total
9-12	26.5	0.0	0.0	0.0	0.0	0.0	0.0	43.2	30.3	22.9	27.2
10-12	14.3	0.0	0.0	0.0	0.0	0.0	0.0	31.8	19.5	22.9	20.8



# San Diego City Schools

## 2003-2004 Dropout Counts and Rates by Grade Level, Ethnicity, and Gender

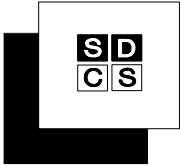
### NEW DAWN (438)

Grade	Afr. Am.		Asian		Filipino		Hispanic		Indoch.		Nat. Am.		Pac. Isl.		White		Total			Rates per 100		
	M	F	M	F	M	F	M	F	M	F	M	F	M	F	M	F	All	M	F	Total		
Dropout Counts	9	0	1				0	0							1		1	1	2	6.3	50.0	11.1
	10	1					0	0							0		1	0	1	11.1	0.0	10.0
	11	0					1							0	0	0	1	0	1	14.3	0.0	12.5
	12	1													2		3		3	150.0		150.0
Totals (Grades 9-12)		2	1				1	0						0	3	0	6	1	7	17.6	25.0	18.4
Ethnic Totals		3					1							0		3						

Grades	Afr. Am.	Asian	Filipino	Hispanic	Indoch.	Nat. Am.	Pac. Isl.	White	M	F	Total
9-12	20.0			9.1			0.0	30.0	17.6	25.0	18.4
10-12	22.2			25.0			0.0	40.0	27.8	0.0	25.0

Grade	Afr. Am.	Asian	Filipino	Hispanic	Indoch.	Nat. Am.	Pac. Isl.	White
9	16.7			0.0				20.0
10	16.7			0.0				0.0
11	0.0			100.0			0.0	0.0
12	100.0							200.0

Grades	Afr. Am.	Asian	Filipino	Hispanic	Indoch.	Nat. Am.	Pac. Isl.	White	M	F	Total
9-12	100.0			100.0			0.0	180.0	135.7	50.0	135.0
10-12	100.0			100.0			0.0	200.0	138.1	0.0	139.4



# San Diego City Schools

## 2003-2004 Dropout Counts and Rates by Grade Level, Ethnicity, and Gender

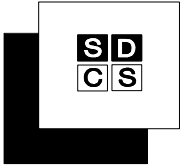
RILEY (364)

Grade	Afr. Am.		Asian		Filipino		Hispanic		Indoch.		Nat. Am.		Pac. Isl.		White		Total			Rates per 100		
	M	F	M	F	M	F	M	F	M	F	M	F	M	F	M	F	M	F	All	M	F	Total
Dropout Counts	7	0	0	0	0		0								0		0	0	0	0.0	0.0	0.0
	8	0	0	0			0	0			0				0		0	0	0	0.0	0.0	0.0
Totals (Grades 7-8)		0	0	0			0	0			0				0		0	0	0	0.0	0.0	0.0
Ethnic Totals		0		0			0				0				0							

Rates by Grade

Grade	Afr. Am.	Asian	Filipino	Hispanic	Indoch.	Nat. Am.	Pac. Isl.	White
7	0.0	0.0		0.0				0.0
8	0.0			0.0		0.0		0.0





# San Diego City Schools

## 2003-2004 Dropout Counts and Rates by Grade Level, Ethnicity, and Gender

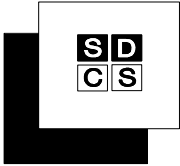
TRACE (479)

Grade	Afr. Am.		Asian		Filipino		Hispanic		Indoch.		Nat. Am.		Pac. Isl.		White		Total		All	Rates per 100		
	M	F	M	F	M	F	M	F	M	F	M	F	M	F	M	F	M	F		Total		
Dropout Counts	9	0	0				0								0	0	0	0	0	0.0	0.0	0.0
	10	0					0								0		0	0	0	0.0		0.0
	11	0	0			0	0								0	0	0	0	0	0.0	0.0	0.0
	12	0	0	0	0	0	0	0	0	0	0	0	0	0	0	0	0	0	0	0.0	0.0	0.0
Totals (Grades 9-12)		0	0	0	0	0	0	0	0	0	0	0	0	0	0	0	0	0	0	0.0	0.0	0.0
Ethnic Totals		0		0		0		0		0		0		0		0						

Grades	Afr. Am.	Asian	Filipino	Hispanic	Indoch.	Nat. Am.	Pac. Isl.	White	Rates per 100		
									M	F	Total
9-12	0.0	0.0	0.0	0.0	0.0	0.0	0.0	0.0	0.0	0.0	0.0
10-12	0.0	0.0	0.0	0.0	0.0	0.0	0.0	0.0	0.0	0.0	0.0

Grade	Afr. Am.	Asian	Filipino	Hispanic	Indoch.	Nat. Am.	Pac. Isl.	White
9	0.0			0.0				
10	0.0			0.0				0.0
11	0.0		0.0	0.0				0.0
12	0.0	0.0	0.0	0.0	0.0	0.0	0.0	0.0

Grades	Afr. Am.	Asian	Filipino	Hispanic	Indoch.	Nat. Am.	Pac. Isl.	White	Rates per 100		
									M	F	Total
9-12	0.0	0.0	0.0	0.0	0.0	0.0	0.0	0.0	0.0	0.0	0.0
10-12	0.0	0.0	0.0	0.0	0.0	0.0	0.0	0.0	0.0	0.0	0.0



# San Diego City Schools

## 2003-2004 Dropout Counts and Rates by Grade Level, Ethnicity, and Gender

### TRACE SENIORS (793)

Grade	Afr. Am.		Asian		Filipino		Hispanic		Indoch.		Nat. Am.		Pac. Isl.		White		Total			Rates per 100		
	M	F	M	F	M	F	M	F	M	F	M	F	M	F	M	F	All	M	F	Total		
Dropout Counts	10	0	0	0	0	0	0	0	0	0	0	0	0	0	0	0	0	0	0	0.0	0.0	0.0
	11	0	0	0	0	0	0	0	0	0	0	0	0	0	0	0	0	0	0.0	0.0	0.0	
	12							0							0		0		0.0	0.0	0.0	
Totals (Grades 10-12)																	0	0	0	0	0.0	0.0
Ethnic Totals																	0	0	0	0.0	0.0	

Grades	Afr. Am.	Asian	Filipino	Hispanic	Indoch.	Nat. Am.	Pac. Isl.	White	M	F	Total
10-12	0.0	0.0	0.0	0.0	0.0	0.0	0.0	0.0	0.0	0.0	0.0

Grade	Afr. Am.	Asian	Filipino	Hispanic	Indoch.	Nat. Am.	Pac. Isl.	White
9	0.0	0.0	0.0	0.0	0.0	0.0	0.0	0.0
10	0.0	0.0	0.0	0.0	0.0	0.0	0.0	0.0
11	0.0	0.0	0.0	0.0	0.0	0.0	0.0	0.0

Grades	Afr. Am.	Asian	Filipino	Hispanic	Indoch.	Nat. Am.	Pac. Isl.	White	M	F	Total
9-12	0.0	0.0	0.0	0.0	0.0	0.0	0.0	0.0	0.0	0.0	0.0