



Advanced Placement (AP) Report, 2011–2012

Introduction

The College Board’s Advanced Placement (AP) program consists of college-level courses and corresponding end-of-course examinations. AP courses are developed by a committee of college faculty and AP teachers and are approved and authorized annually through the College Board’s AP Course Audit process. Each AP course has a corresponding exam that is administered in May of each year. A majority of colleges and universities grant credit, placement, or both to students receiving a qualifying score on an AP exam, usually 3 or higher on a 5-point scale.

Since the AP program is primarily designed for students in Grades 10 to 12,¹ this report focuses on students in these grade levels at district-managed schools and includes only results of exams taken after completion of the appropriate district AP course. Three district charter high schools—Gompers Preparatory Academy, King-Chavez High and Preuss—offered an AP program in 2011–2012. For detailed reports that include charter data, please visit www.sandi.net/research.

Student Participation and Performance

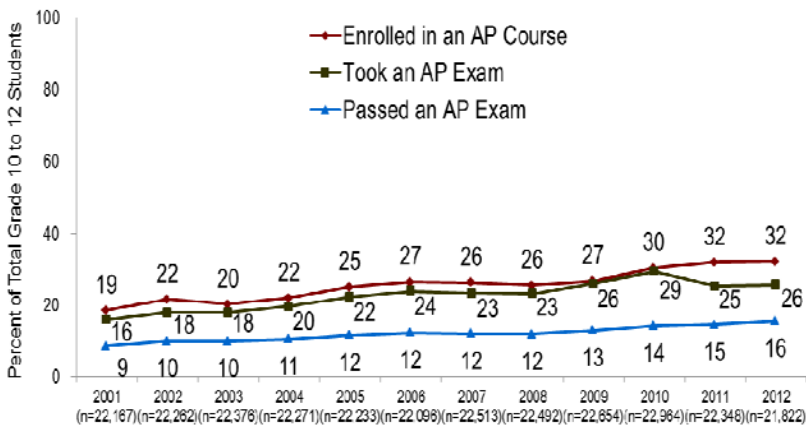


Figure 1. Student participation and performance in the AP program.

Figure 1 shows relatively unchanged district student participation and performance levels in the AP program for 2012 compared to the previous year. This is based on the proportion of all students in grades 10 to 12 who enrolled in at least one AP course (32 percent), took at least one AP exam (26 percent), and passed at least one AP exam (16 percent).

Sizable gains in exam participation in 2009 and 2010 followed by a sharp decline in 2011 were due largely to the introduction and subsequent discontinuation after two years of the district AP exam fee subsidy program. To

compensate for the subsidy loss, the district no longer requires students to take an AP exam to receive weighted course credit. “Weighted course credit” means grade points are awarded on a weighted, or five-point, scale (A=5, B=4, C=3, D=1, F=0) rather than the standard 4-point scale (A=4, B=3, C=2, D=1, F=0). All students now receive weighted credit for every AP course whether or not the corresponding AP exam is taken. This may explain why course participation was not adversely affected by the loss of the subsidy program. It is notable that exam participation rates after the subsidy ended remain higher than rates before the subsidy years.

Courses and Examinations

The College Board’s 2012 AP program included 34 exams with corresponding courses in the following subject areas: Arts, English, History and Social Sciences, Mathematics and Computer Science, Sciences, and World Language; district students took 29 of these courses/exams.² Similar to last year, individual district schools offered up to 23 AP courses, with more than a third of non-alternative schools offering 11 or more courses (Figure 2).³ In 2012, there were

¹ Source: <http://apcentral.collegeboard.com/apc/public/repository/Appropriate-Grade-Levels-for-AP-Courses.pdf>.

² District students did not take the following AP exams in conjunction with the appropriate district AP course: Government and Politics (Comparative), Physics C (Electricity/Magnetism), Chinese Language and Culture, Italian Language and Culture, and Japanese Language and Culture. With the exception of Italian language and Culture, students took exams in these subjects without the corresponding courses and vice versa.

³ Six San Diego MVPA students took the AP US History course but none took the corresponding AP exam.

modest increases in AP course enrollment and exam counts—12,590 course enrollments and 9,642 exams,⁴ up from 12,299 course enrollments and 9,494 exams in 2011 (Figure 3). There was a substantial increase in the percentage of AP course enrollees who took more than one AP course, from 46 percent in 2010 and 2011 to 49 percent in 2012. The exam pass rate showed a substantial increase as well—the 57 percent exam pass rate for 2012 surpassed the previous record-high pass rate of 54 percent set just a year ago (Figure 4).

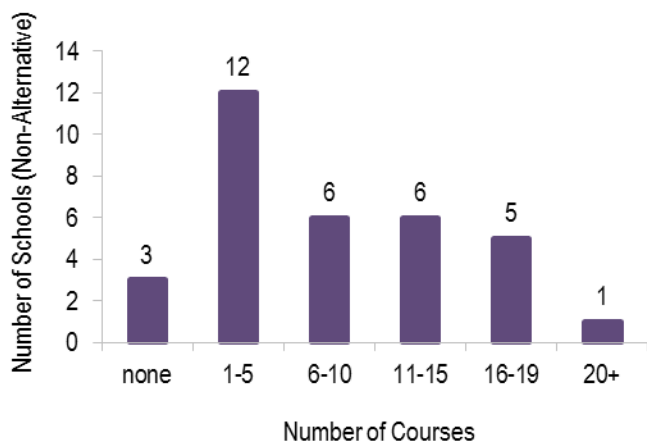


Figure 2. Number of AP courses offered at non-alternative district-managed schools, 2012.

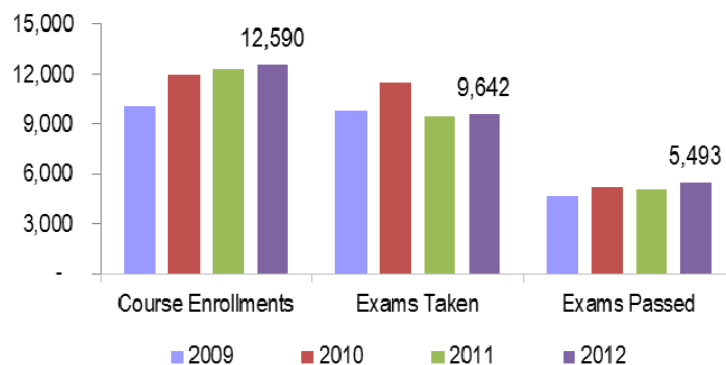


Figure 3. Number of AP course enrollments and exams taken and passed.

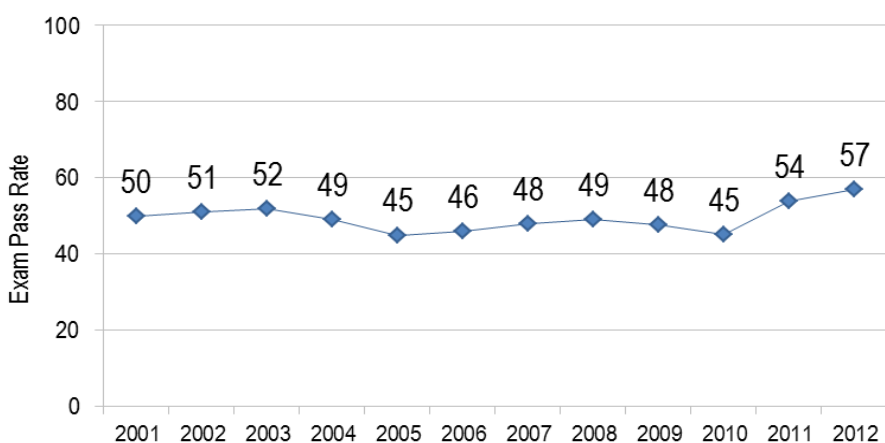


Figure 4. Exam pass rate (passing score is at least 3 on a 5-point scale).

AP Program for Students in Grades 8 and 9. Although the AP program is primarily geared toward students in Grades 10 to 12, a few district high schools allow selected Grade 9 students limited participation in their AP programs. In 2012, 251 Grade 9 students at district-managed schools took an AP course/exam—92 percent were from Mira Mesa, Point Loma, and University City high schools. These students passed 150 of 254 AP exams (59 percent); 230 of the 254 exams (91 percent) were in Human Geography and Environmental Science.

In 2012, consistent with College Board policy on middle school students and AP world language courses/exams, selected Grade 8 students at Language Academy and Longfellow took the AP Spanish Language exam; 27 of 43 students (63 percent) passed the exam.⁵

Participation and Performance by Student Group

Generally, 2012 AP data for various student groups reflected the district’s overall performance (Tables 1 and 2). For course participation, student group results by meal eligibility and race/ethnicity either stayed the same or changed modestly from the previous year—no more than a 2-percentage point difference in either direction. For exam pass rates, all groups except the Native American student group had increased pass rates (Table 2). Asian students had the highest course participation and exam pass rates; Hispanic students had the lowest course participation rates; and African American students had the lowest exam pass rates. Native American and Pacific Islander group data should be interpreted with caution due to small group counts, which often result in large fluctuations from year to year. Similar to other assessments, gaps in AP participation and performance persist, with the widest gaps between White students and African American students (Figures 5 and 6).

⁴ Students in Grades 10 to 12 at district-managed schools took 343 AP exams without the corresponding district AP course.

⁵ Exam data for Language Academy are based on self-reported student results.

Table 1. Student course participation by eligibility for free or reduced-price meals and race/ethnicity.

Group	2008			2009			2010			2011			2012		
	Total Student Count	Students with an AP Course	Rate %	Total Student Count	Students with an AP Course	Rate %	Total Student Count	Students with an AP Course	Rate %	Total Student Count	Students with an AP Course	Rate %	Total Student Count	Students with an AP Course	Rate %
Not Meal-Eligible	11,315	3,948	35	10,453	3,761	36	9,544	4,096	43	8,923	4,155	47	8,555	3,958	46 ↓
Meal-Eligible	11,177	1,803	16	12,201	2,300	19	13,420	2,892	22	13,425	2,991	22	13,267	3,066	23 ↑
African American	2,935	346	12	2,903	428	15	2,810	507	18	2,568	459	18	2,424	430	18
Asian	791	463	59	758	428	56	753	453	60	748	424	57	737	435	59 ↑
Filipino	2,029	644	32	2,007	661	33	1,946	740	38	1,857	770	41	1,755	758	43 ↑
Hispanic	9,001	1,407	16	9,404	1,660	18	9,710	1,951	20	9,281	1,914	21	9,024	1,852	21
Indochinese	1,433	487	34	1,467	561	38	1,458	661	45	1,447	669	46	1,485	687	46
Native American	115	35	30	99	26	26	104	34	33	94	39	41	73	31	42 ↑
Pacific Islander	203	32	16	199	26	13	190	52	27	174	41	24	169	43	25 ↑
White	5,985	2,337	39	5,817	2,271	39	5,632	2,481	44	5,624	2,633	47	5,445	2,522	46 ↓
Multiracial							361	109	30	555	197	35	710	266	37 ↑
Total	22,492	5,751	26	22,654	6,061	27	22,964	6,988	30	22,348	7,146	32	21,822	7,024	32

Table 2. Exam pass rate by eligibility for free or reduced-price meals and race/ethnicity.

Group	2008			2009			2010			2011			2012		
	Exams Taken	Exams Passed	Rate %	Exams Taken	Exams Passed	Rate %	Exams Taken	Exams Passed	Rate %	Exams Taken	Exams Passed	Rate %	Exams Taken	Exams Passed	Rate %
Not Meal-Eligible	6,553	3,619	55	6,490	3,647	56	7,232	3,899	54	5,637	3,620	64	5,634	3,787	67 ↑
Meal-Eligible	2,458	798	32	3,353	1,040	31	4,316	1,314	30	3,857	1,495	39	4,008	1,706	43 ↑
African American	427	96	22	573	95	17	723	123	17	520	129	25	450	123	27 ↑
Asian	1,026	655	64	897	595	66	978	619	63	788	556	71	827	594	72 ↑
Filipino	1,017	365	36	1,093	435	40	1,291	453	35	1,003	466	46	1,014	486	48 ↑
Hispanic	1,731	698	40	2,387	910	38	2,815	1,052	37	2,233	990	44	2,195	1,040	47 ↑
Indochinese	819	282	34	1,024	390	38	1,241	462	37	1,026	477	46	1,117	559	50 ↑
Native American	60	30	50	43	21	49	50	21	42	46	21	46	39	13	33 ↓
Pacific Islander	39	11	28	43	16	37	74	36	49	46	22	48	46	25	54 ↑
White	3,892	2,280	59	3,783	2,225	59	4,188	2,360	56	3,574	2,303	64	3,621	2,448	68 ↑
Multiracial							188	87	46	258	151	59	333	205	62 ↑
Total	9,011	4,417	49	9,843	4,687	48	11,548	5,213	45	9,494	5,115	54	9,642	5,493	57 ↑

Note: In Tables 1 and 2 above, the 2012 rate is highlighted in green if it represents an increase ↑ from the previous year; red, if it represents a decrease ↓.

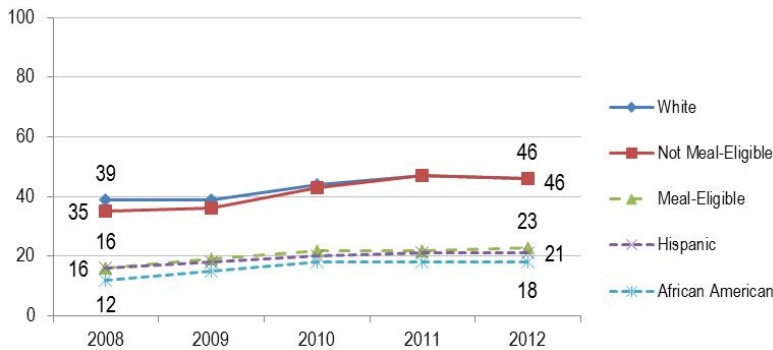


Figure 5. Course participation by selected student group.

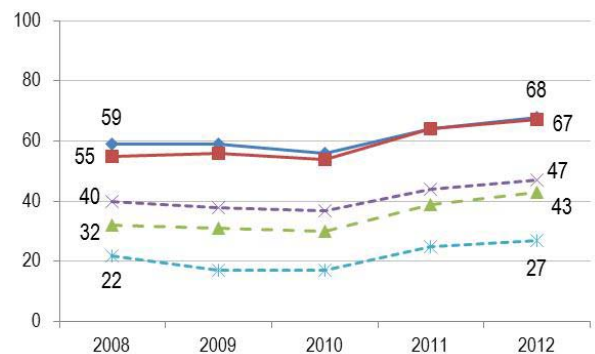


Figure 6. Exam pass rate by selected student group.

*Other Student Groups.*⁶ AP participation and performance data by language fluency, disability status, gifted-identified status, homeless or foster situation, and military affiliation are shown in Table 3.

Table 3. AP participation and performance data by selected student group, 2012.

Category	Student Group	Student Count	Students with an AP Course	Course Participation Rate (%)	Exams Taken	Exams Passed	Exam Pass Rate (%)
Language Fluency	English Fluent	13,575	5,180	38	7,260	4,407	61
	English Learner (EL)	2,352	130	6	129	46	36
	Reclassified EL	5,851	1,708	29	2,248	1,039	46
Disability Status	Students with Disabilities (SWD)	1,913	123	6	107	51	48
	Not SWD	19,909	6,901	35	9,535	5,442	57
Gifted-Identified Status	Gifted-Identified	6,432	3,519	55	5,562	3,697	66
	Not Gifted-Identified	15,390	3,505	23	4,080	1,796	44
Homeless/Foster/Military	Homeless	669	86	13	103	37	36
	Foster	89	7	8	11	4	36
	Military Family	1,056	313	30	378	204	54

⁶ The Students with Disabilities (SWD) group includes students who receive special education services through an Individualized Education Program (IEP). The SWD group does not include students who receive services through Section 504 of the Rehabilitation Act of 1973.

Comparison with California and the Nation

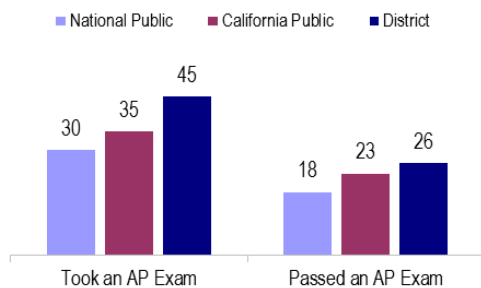


Figure 7. AP data for the class of 2011.

The College Board reports AP participation and performance in terms of percentages of graduates who have taken and passed an AP exam at any time during their high school years. Historically, the district has performed well on these measures when compared with both the state and the nation; higher proportions of district graduates take and pass one or more AP exams during high school than their counterparts in public schools across California and the nation. For the class of 2011, the most recent data available, 45 percent of district graduates took an AP exam during high school compared with 30 percent for the nation and 35 percent for California; 26 percent of district graduates passed at least one AP exam during high school compared with 18 percent for the nation and 23 percent for California (Figure 7).

Exam Results by Subject Area

Table 4. Exam pass rates by subject area, 2011–2012⁷

Subject Area	AP Course/Exam	National Exam Pass Rate (%) ⁸	District-Managed, Grades 10 to 12, With AP Course		
			Exams Taken	Exams Passed	Rate (%)
Art	Art: Studio Art 2-D Design Portfolio	N/A	146	115	78.8
	Art: Studio Art 3-D Design Portfolio	N/A	1	1	--
	Art: Studio Art-Drawing Portfolio	N/A	63	34	54.0
	History of Art	60.0	178	146	82.0
	Music Theory	61.6	26	17	65.4
	Art Total		414	313	75.6
English Language Arts	English Language & Composition	60.2	1,149	712	62.0
	English Literature & Composition	56.6	1,089	561	51.5
	English Language Arts Total		2,238	1,273	56.9
History/Social Science	Economics: Macroeconomics	55.8	101	68	67.3
	Economics: Microeconomics	65.7	24	5	20.8
	European History	65.8	587	332	56.6
	Government & Politics: Comparative	61.8	0	0	--
	Government & Politics: United States	52.2	624	313	50.2
	Human Geography	52.4	17	14	82.4
	Psychology	66.2	780	551	70.6
	United States History	54.6	1,051	556	52.9
	World History	53.1	653	298	45.6
	History/Social Science Total		3,837	2,137	55.7
Mathematics/Computer Science	Calculus AB	59.7	529	214	40.5
	Calculus BC	82.4	45	32	71.1
	Computer Science A	63.6	70	46	65.7
	Statistics	59.2	446	227	50.9
		Mathematics/Computer Science Total		1,090	519
Science	Biology	51.0	639	365	57.1
	Chemistry	55.8	234	105	44.9
	Environmental Science	50.4	420	190	45.2
	Physics B	62.0	70	25	35.7
	Physics C: Electricity & Magnetism	73.0	0	0	--
	Physics C: Mechanics	77.4	60	42	70.0
	Science Total		1,423	727	51.1
World Language	Chinese Language & Culture	78.3	0	0	--
	French Language	74.6	71	54	76.1
	German Language	73.1	1	1	--
	Italian Language	68.5	0	0	--
	Japanese Language & Culture	61.9	0	0	--
	Latin: Vergil	62.9	12	10	83.3
	Spanish Language	57.3	487	408	83.8
	Spanish Literature	61.8	69	51	73.9
	World Language Total		640	524	81.9
	Grand Total		9,642	5,493	57.0

⁷ Data only include results for AP exams taken after completion of the appropriate district AP course by students in Grades 10 to 12 at district-managed schools. For detailed reports that include charter schools and exams that were taken without the corresponding district AP course, please go to www.sandi.net/research.

⁸ Source: http://media.collegeboard.com/digitalServices/pdf/research/student_score_distributions_2012.pdf.

Participation and Performance by School

Table 5. AP student data by school, 2011–2012

School		Total Gr 10 to 12 Enrollment	Took an AP Course		Took an Examination		Passed an AP Examination	
			N	%	N	%	N	%
332	Clairemont	829	251	30.3	202	24.4	119	14.4
704	Crawford CHAMPS	235	72	30.6	65	27.7	20	8.5
702	Crawford IDEA	203	61	30.0	44	21.7	11	5.4
705	Crawford Law & Business	177	35	19.8	31	17.5	14	7.9
703	Crawford Multimedia & Vis Arts	197	67	34.0	48	24.4	11	5.6
336	Henry	1,672	617	36.9	482	28.8	319	19.1
338	Hoover	1159	211	18.2	193	16.7	80	6.9
504	iHigh Virtual Academy	59	9	15.3	5	8.5	3	5.1
736	Kearny Construction Tech	266	2	0.8	2	0.8	1	0.4
733	Kearny Digital Media & Design	274	113	41.2	72	26.3	31	11.3
735	Kearny International Business	244	73	29.9	39	16.0	25	10.2
734	Kearny SCT	258	84	32.6	82	31.8	36	14.0
342	La Jolla High	1,112	647	58.2	533	47.9	437	39.3
637	Lincoln	1,262	257	20.4	234	18.5	44	3.5
346	Madison	788	258	32.7	179	22.7	61	7.7
349	Mira Mesa	1,805	752	41.7	576	31.9	383	21.2
350	Mission Bay	979	49	5.0	48	4.9	46	4.7
352	Morse	1,297	337	26.0	285	22.0	137	10.6
395	Mt. Everest	73	22	30.1	14	19.2	12	16.4
369	Muir	58	1	1.7	0	0.0	0	0.0
354	Point Loma	1,322	703	53.2	622	47.0	342	25.9
749	San Diego Business	301	40	13.3	34	11.3	15	5.0
746	San Diego Communication	128	2	1.6	1	0.8	0	0.0
744	San Diego Int'l Studies	426	105	24.6	70	16.4	37	8.7
745	San Diego LEADS	269	3	1.1	3	1.1	3	1.1
500	San Diego Metro Career & Tech	149	0	0.0	0	0.0	0	0.0
750	San Diego MVP Arts	252	6	2.4	0	0.0	0	0.0
753	San Diego Sci Tech	280	16	5.7	13	4.6	3	1.1
368	SCPA	533	242	45.4	164	30.8	86	16.1
359	Scripps Ranch	1,711	692	40.4	613	35.8	497	29.0
503	SD Early/Middle College High	107	38	35.5	24	22.4	3	2.8
357	Serra	1,319	595	45.1	394	29.9	241	18.3
355	University City	1,297	662	51.0	548	42.3	400	30.8
Regular Schools Total		21,041	7,022	33.4	5,620	26.7	3,417	16.2
331	ALBA	11	0	0.0	0	0.0	0	0.0
361	Garfield High	326	0	0.0	0	0.0	0	0.0
382	Home and Hospital	7	1	--	0	--	0	--
791	LCI	39	0	0.0	0	0.0	0	0.0
364	Riley/New Dawn	54	0	0.0	0	0.0	0	0.0
362	Twain	344	1	0.3	0	0.0	0	0.0
Alternative Schools Total		781	2	0.3	0	0.0	0	0.0
District-Managed Schools Total		21,822	7,024	32.2	5,620	25.8	3,417	15.7

Note: Results are suppressed when the size of the group under consideration (or denominator) is less than 10.

Data do not include International Baccalaureate courses or exams offered at Mission Bay and San Diego International Studies.

Table 6. AP course enrollment and exam data by school, 2011–2012

School		Total Gr 10 to 12 Enrollment	AP Courses Offered	AP Course Enrollments		AP Examinations Taken		AP Examinations Passed	
				N	Per 100 students	N	Per 100 students	N	%
332	Clairemont	829	12	435	52.5	353	42.6	197	55.8
704	Crawford CHAMPS	235	7	129	54.9	86	36.6	18	20.9
702	Crawford IDEA	203	9	97	47.8	60	29.6	14	23.3
705	Crawford Law & Business	177	6	70	39.5	44	24.9	15	34.1
703	Crawford Multimedia & Vis Arts	197	10	119	60.4	67	34.0	11	16.4
336	Henry	1,672	15	1,006	60.2	774	46.3	502	64.9
338	Hoover	1,159	8	289	24.9	265	22.9	94	35.5
504	iHigh Virtual Academy	59	12	13	22.0	8	13.6	5	62.5
736	Kearny Construction Tech	266	0	3	1.1	2	0.8	1	50.0
733	Kearny Digital Media & Design	274	5	146	53.3	95	34.7	32	33.7
735	Kearny International Business	244	3	100	41.0	33	13.5	19	57.6
734	Kearny SCT	258	4	111	43.0	108	41.9	45	41.7
342	La Jolla High	1,112	23	1,464	131.7	1,053	94.7	833	79.1
637	Lincoln	1,262	12	368	29.2	335	26.5	52	15.5
346	Madison	788	10	484	61.4	326	41.4	86	26.4
349	Mira Mesa	1,805	19	1,384	76.7	1,067	59.1	649	60.8
350	Mission Bay	979	1	49	5.0	48	4.9	46	95.8
352	Morse	1,297	13	699	53.9	515	39.7	207	40.2
395	Mt. Everest	73	5	32	43.8	19	26.0	14	73.7
369	Muir	58	0	1	1.7	0	0.0	0	0.0
354	Point Loma	1,322	18	1,196	90.5	1,078	81.5	565	52.4
749	San Diego Business	301	5	94	31.2	80	26.6	28	35.0
746	San Diego Communication	128	1	3	2.3	1	0.8	0	0.0
744	San Diego Int'l Studies	426	2	105	24.6	69	16.2	36	52.2
745	San Diego LEADS	269	1	3	1.1	3	1.1	1	33.3
500	San Diego Metro Career & Tech	149	0	0	0.0	0	0.0	0	0.0
750	San Diego MVP Arts	252	1	6	2.4	0	0.0	0	0.0
753	San Diego Sci Tech	280	1	18	6.4	14	5.0	2	14.3
368	SCPA	533	13	418	78.4	268	50.3	122	45.5
359	Scripps Ranch	1,711	18	1,280	74.8	1,077	62.9	828	76.9
503	SD Early/Middle College High	107	1	38	35.5	23	21.5	3	13.0
357	Serra	1,319	17	1,259	95.5	834	63.2	440	52.8
355	University City	1,297	16	1,169	90.1	937	72.2	628	67.0
Regular Schools Total		21,041	29	12,588	59.8	9,642	45.8	5,493	57.0
331	ALBA	11	0	0	0.0	0	0	0	--
361	Garfield High	326	0	0	0.0	0	0	0	--
382	Home and Hospital	7	0	1	--	0	--	0	--
791	LCI	39	0	0	0.0	0	0	0	--
364	Riley/New Dawn	54	0	0	0.0	0	0	0	--
362	Twain	344	0	1	0.3	0	0	0	--
Alternative Schools Total		781	0	2	0.3	0	0.0	0	0.0
District-Managed Schools Total		21,822	29	12,590	57.7	9,642	44.2	5,493	57.0

Note: Results are suppressed when the size of the group under consideration (or denominator) is less than 10.

Data do not include International Baccalaureate courses or exams offered at Mission Bay and San Diego International Studies.
Counts exclude AP subscores for Calculus BC (Calculus AB subscore) and Music Theory (Aural and Non-Aural subscores).

Please visit the district website for detailed AP reports and information (<http://www.sandi.net/research>).